

A CURVE DATA
 P.I. STA. = 77+71.05, 29.04' LT.
 $\Delta = 85^\circ 58' 09''$
 $D_c = 113' 27' 25''$
 $R = 50.50'$
 $T = 47.07'$
 $L = 75.77'$
 $E = 18.53'$
 PC STA. = 160+40.89
 PT STA. = 77+71.05

B CURVE DATA
 P.I. STA. = 77+29.87, 29.84' RT.
 $\Delta = 85^\circ 23' 05''$
 $D_c = 113' 27' 25''$
 $R = 50.50'$
 $T = 46.59'$
 $L = 75.26'$
 $E = 18.21'$
 PC STA. = 161+93.30
 PT STA. = 77+76.45

C CURVE DATA
 P.I. STA. = 160+84.57, 26.02' RT.
 $\Delta = 91^\circ 33' 10''$
 $D_c = 114' 35' 30''$
 $R = 50.00'$
 $T = 51.37'$
 $L = 79.89'$
 $E = 21.69'$
 PC STA. = 160+33.19
 PT STA. = 76+28.22

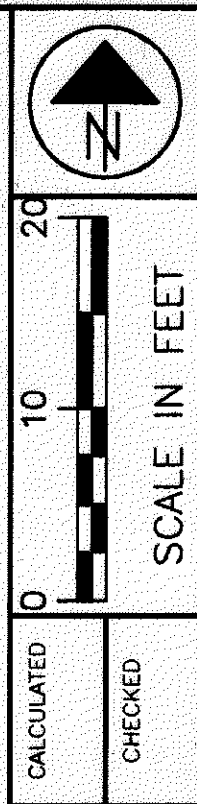
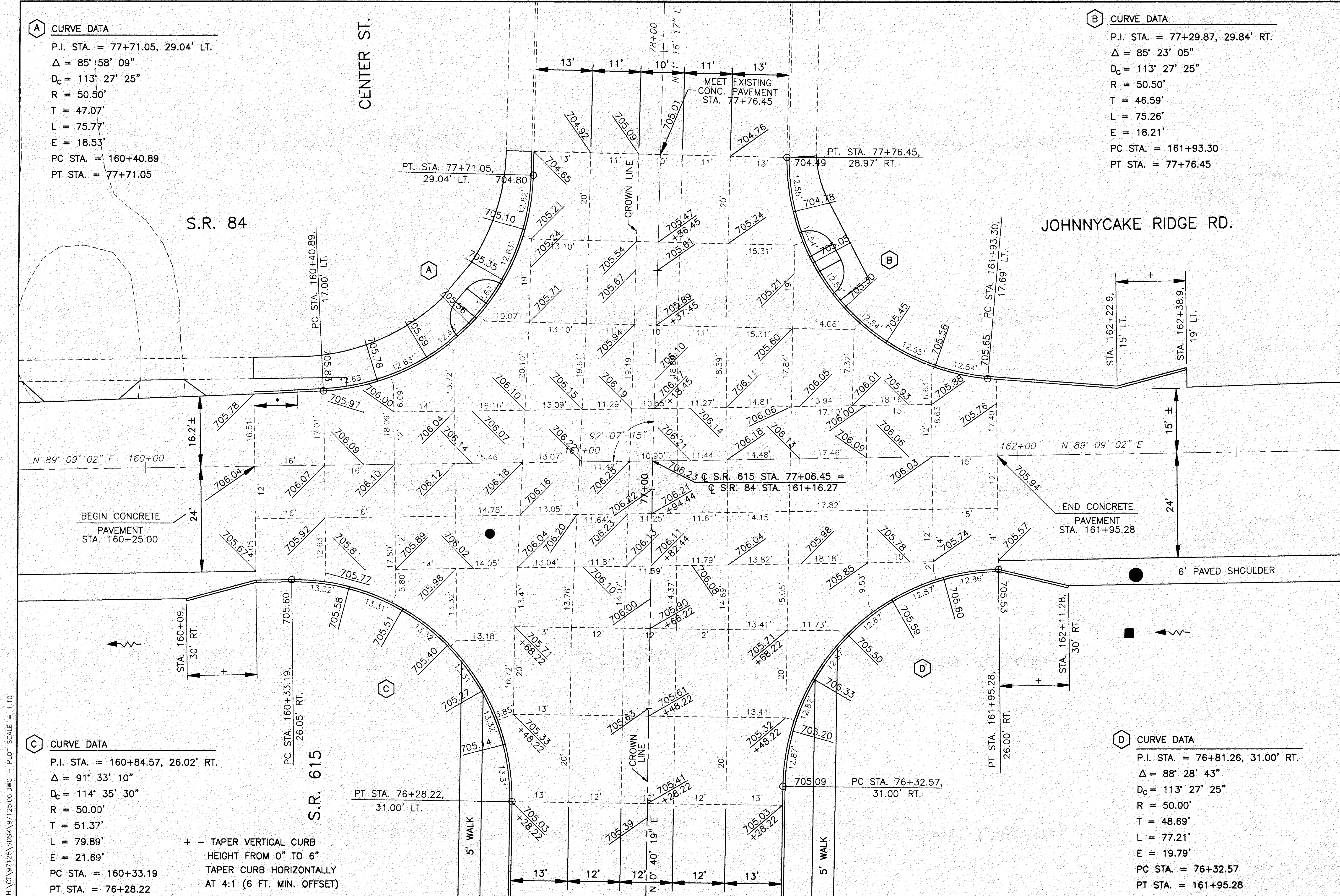
D CURVE DATA
 P.I. STA. = 76+81.26, 31.00' RT.
 $\Delta = 88^\circ 28' 43''$
 $D_c = 113' 27' 25''$
 $R = 50.00'$
 $T = 48.69'$
 $L = 77.21'$
 $E = 19.79'$
 PC STA. = 76+32.57
 PT STA. = 161+95.28

CENTER ST.
 S.R. 84

JOHNNYCAKE RIDGE RD.

S.R. 615

+ - TAPER VERTICAL CURB
 HEIGHT FROM 0" TO 6"
 TAPER CURB HORIZONTALLY
 AT 4:1 (6 FT. MIN. OFFSET)



INTERSECTION DETAILS
 S.R. 615 (CENTER ST.) AND S.R. 84 (JOHNNYCAKE RIDGE RD.)

LAK-IR90/SR615-9.26/1.51

258
 393

H:\CT\97125\SDSK\9712506.DWG - PLOT SCALE = 1:10