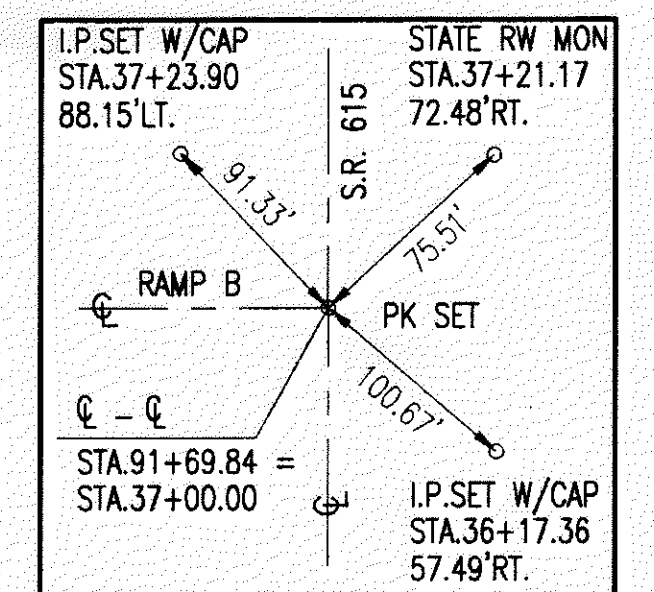


**RAMP B CURVE DATA**

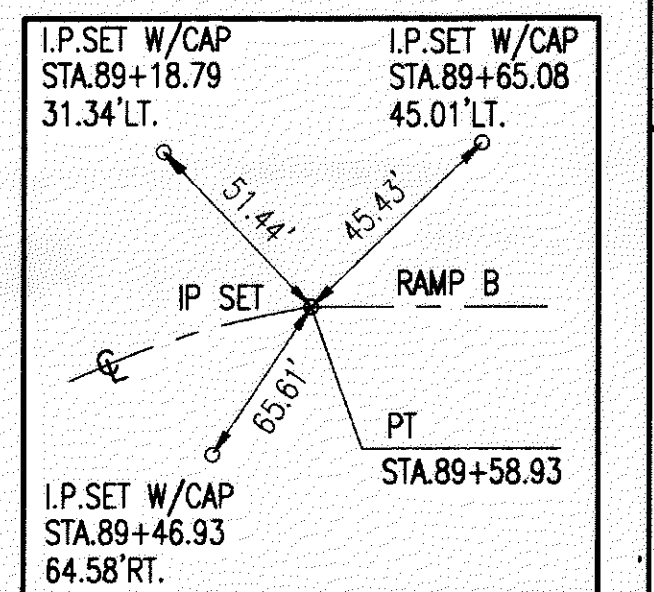
P.I. STA.	= 87+59.58
$\Delta$	= 24° 17' 37"
$D_c$	= 6' 00' 00"
$R$	= 954.93'
$T$	= 205.54'
$L$	= 404.89'
$E$	= 21.87'
$e_{max}$	= 0.044
PC STA.	= 85+54.04
PT STA.	= 89+58.93

**PROPOSED STRUCTURE DATA - STA. 89+43.75**

TYPE	= 24" CONDUIT, TYPE A, 706.02
DRAINAGE AREA	= 2.1 AC.
Q <sub>25</sub>	= 5.00 C.F.S.
Q <sub>100</sub>	= 7.00 C.F.S.
HW <sub>25</sub>	= 751.60
HW <sub>100</sub>	= 751.89
V <sub>25</sub>	= 4.71 F.P.S.
V <sub>100</sub>	= 5.38 F.P.S.



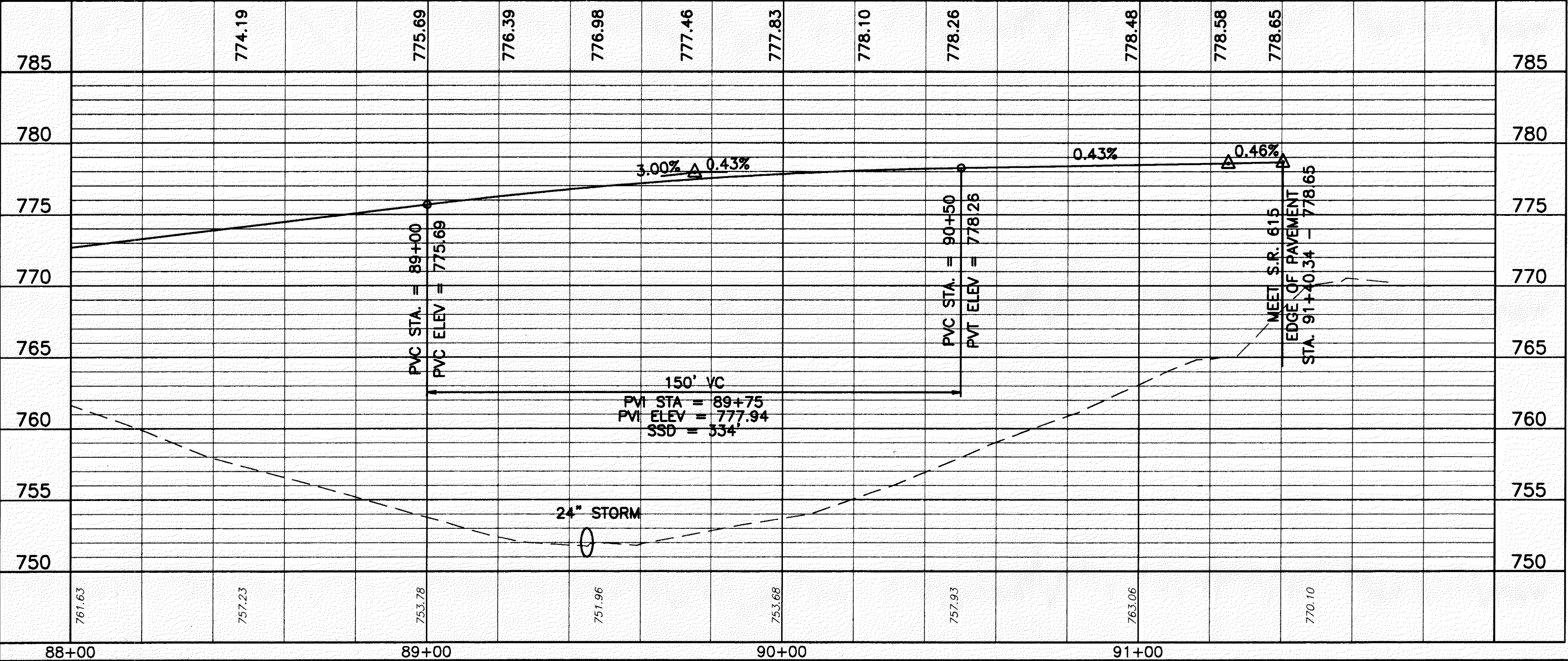
SWTIE#18



SWTIE#19

FOR TYPICAL SECTIONS, SEE SHEETS 5 THRU 15  
 FOR CROSS SECTIONS AND PIPE PROFILES, SEE SHEETS 194 THRU 210  
 FOR SUPERELEVATION TABLES, SEE SHEETS 246 THRU 254  
 FOR INTERSECTION DETAILS, SEE SHEETS 255 THRU 262  
 FOR SIGNING AND PAVEMENT MARKING PLAN, SEE SHEETS 308 THRU 310

EROSION CONTROL WITH TURF REINFORCING MAT (8' WIDE)



REF	LOCATION	SO. YD.	CU. YD.	CU. YD.	CU. YD.	SQ. YD.	UN. FT.	EACH	NO.
604	EROSION CONTROL WITH TURF REINFORCING MAT								
604	CATCH BASIN NO. 5, AS PER PLAN							1	40.00
603	24" CONDUIT, TYPE A, 706.02 OR 27" CONDUIT, TYPE A, 707.05, AS PER PLAN						132		31.11
602	CONCRETE MASONRY		0.43						
601	ROCK CHANNEL PROTECTION, TYPE C WITH FILTER		2.7						
601	RIPRAP 6" REINFORCED CONCRETE SLAB	3.33							
<b>TOTALS</b>									