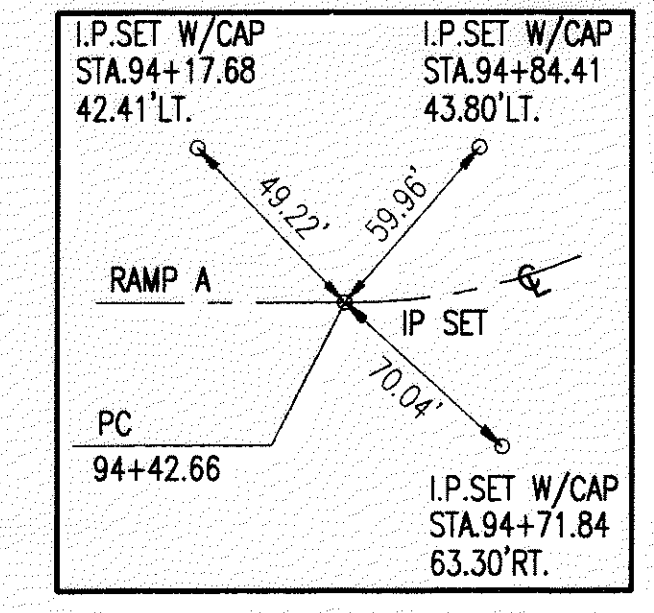
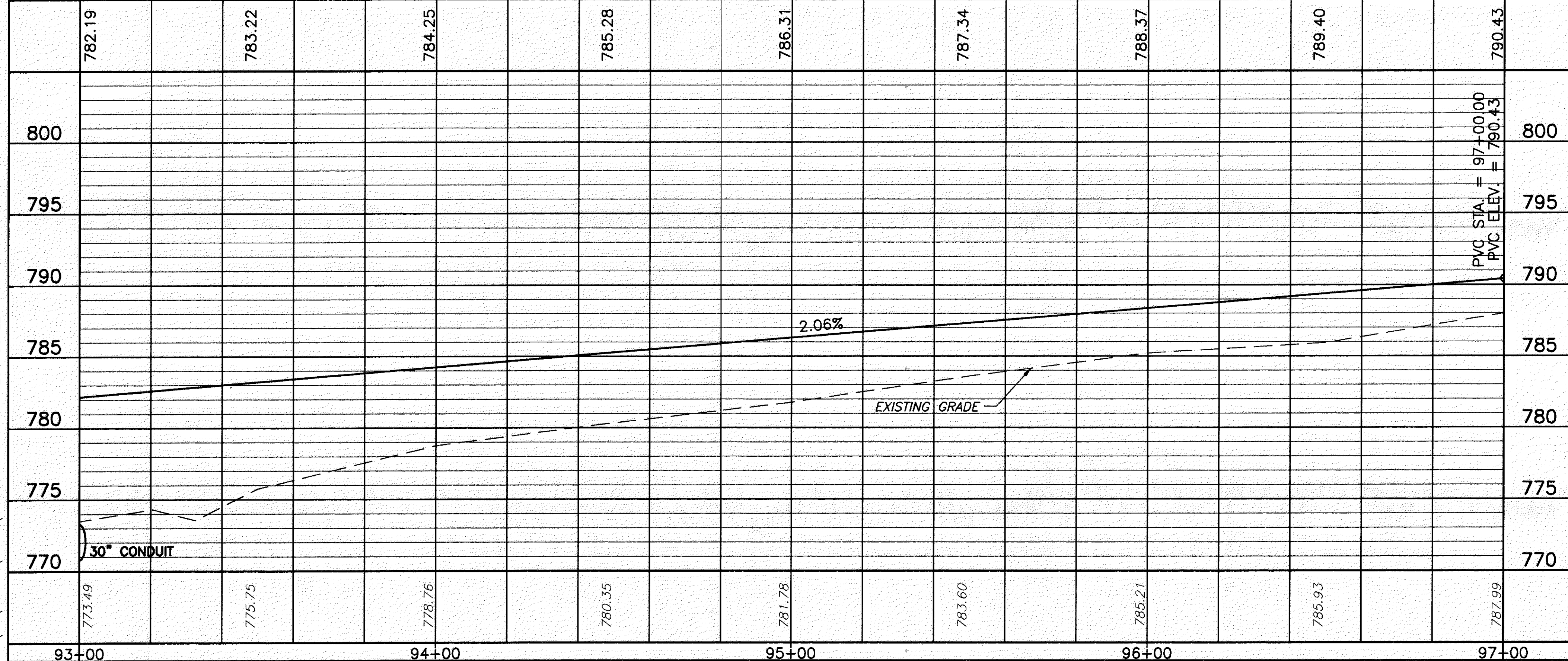
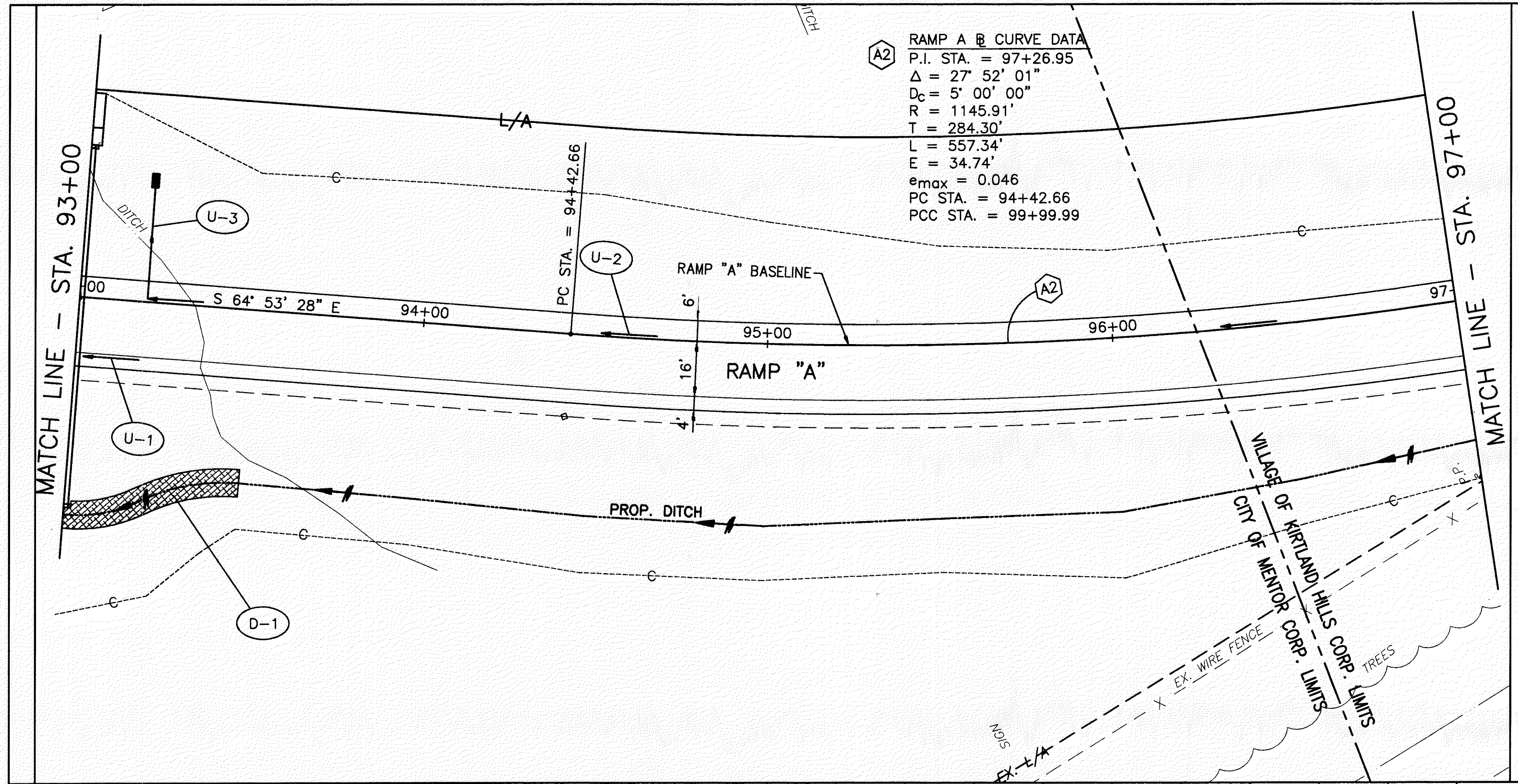


RAMP A @ CURVE DATA
 P.I. STA. = 97+26.95
 $\Delta = 27^\circ 52' 01''$
 $D_c = 5' 00' 00''$
 $R = 1145.91'$
 $T = 284.30'$
 $L = 557.34'$
 $E = 34.74'$
 $e_{max} = 0.046$
 PC STA. = 94+42.66
 PCC STA. = 99+99.99

PROPOSED STRUCTURE DATA - STA. 93+00	
TYPE	= 30" CONDUIT, TYPE A, 706.02
DRAINAGE AREA	= 3.50 AC.
Q ₂₅	= 9.00 C.F.S.
Q ₁₀₀	= 11.00 C.F.S.
HW ₂₅	= 774.07
HW ₁₀₀	= 774.47
V ₂₅	= 9.05 F.P.S.
V ₁₀₀	= 9.56 F.P.S.



FOR TYPICAL SECTIONS, SEE SHEETS 5 THRU 15
 FOR CROSS SECTIONS AND PIPE PROFILES, SEE SHEETS 175 THRU 185
 FOR SUPERELEVATION TABLES, SEE SHEETS 246 THRU 254
 FOR INTERSECTION DETAILS, SEE SHEETS 255 THRU 262
 FOR SIGNING AND PAVEMENT MARKING PLAN, SEE SHEETS 311 THRU 312



SODDING, STAKED (8' WIDE)

REF	DRAINAGE LOCATION	SO. YD.	TOTALS
D-1	STA. 93+00 TO STA. 93+50, RT.	45	45
TOTALS			45

CALCULATED PLW CHECKED WDB
 SCALE IN FEET
 RAMP A
 RAMP A - PLAN AND PROFILE STA. 93+00 TO STA. 97+00
 LAK-IR90/SR615-9.26/1.51
 170
 393

H:\CT\97125\SDSK\7125702A.DWG - PLOT SCALE = 1 : 1

RAMP A - PLAN AND PROFILE STA. 93+00 TO STA. 97+00