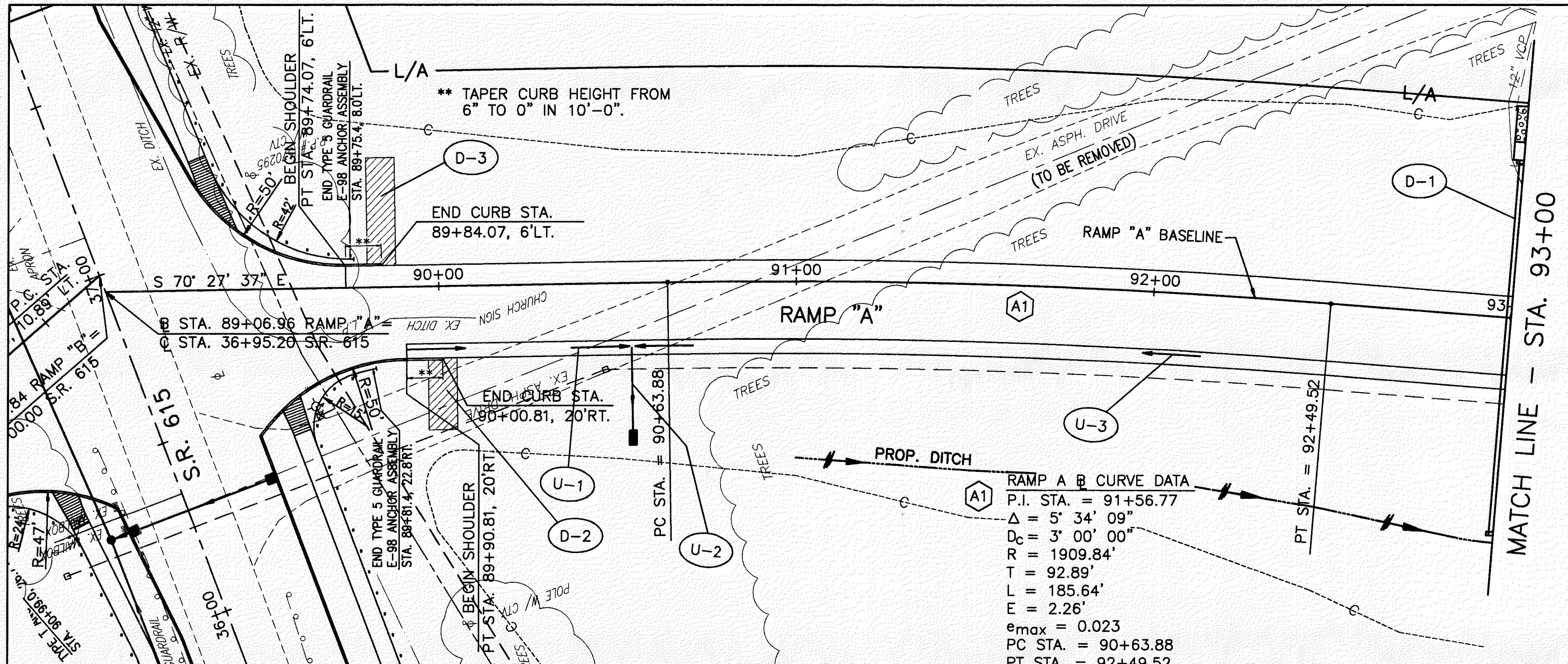
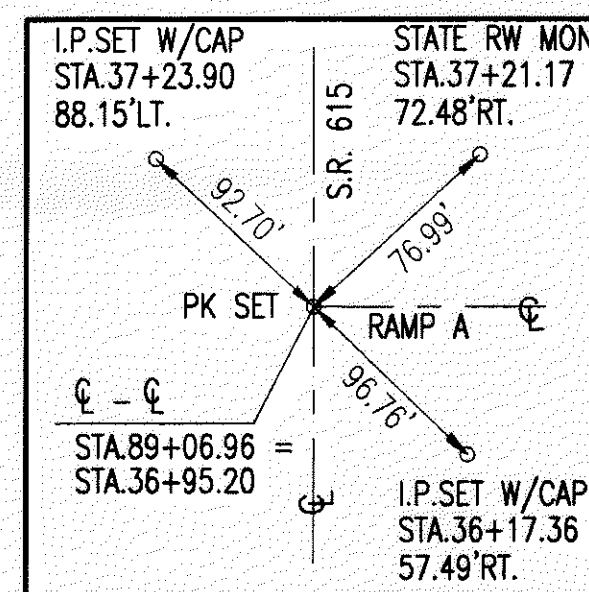


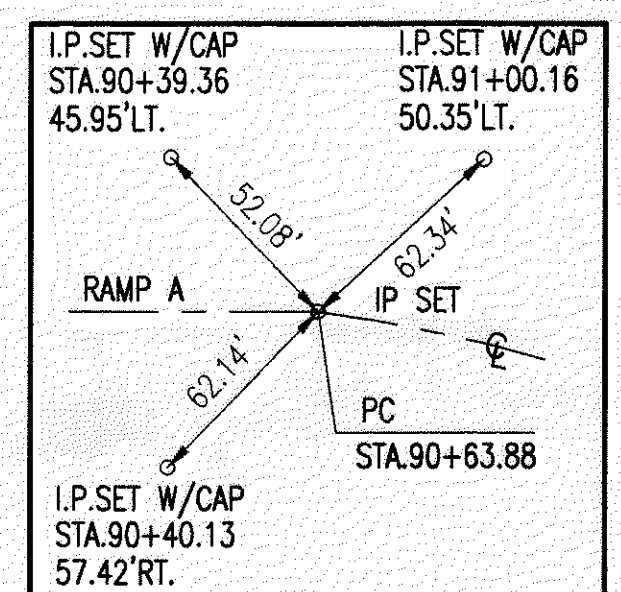
H:\CT\97125\SDSK\7125701A.DWG - PLOT SCALE = 1 : 1



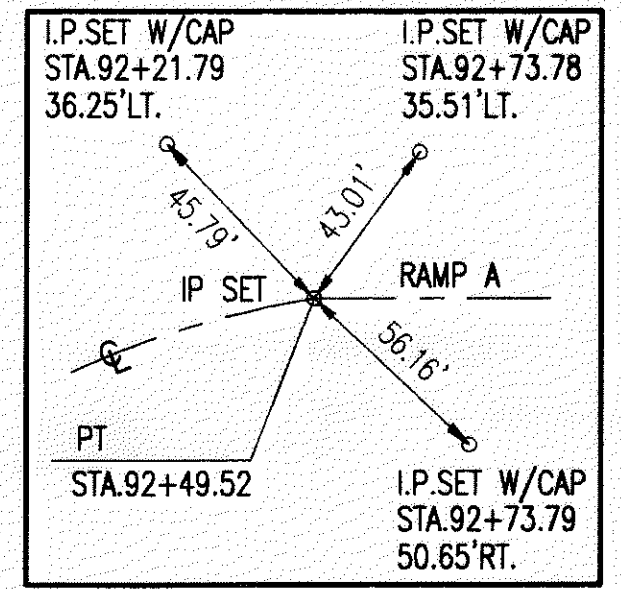
RAMP A B CURVE DATA
 P.I. STA. = 91+56.77
 $\Delta = 5^{\circ} 34' 09''$
 $D_c = 3' 00' 00''$
 $R = 1909.84'$
 $T = 92.89'$
 $L = 185.64'$
 $E = 2.26'$
 $e_{max} = 0.023$
 PC STA. = 90+63.88
 PT STA. = 92+49.52



SWTIE#12



SWTIE#13

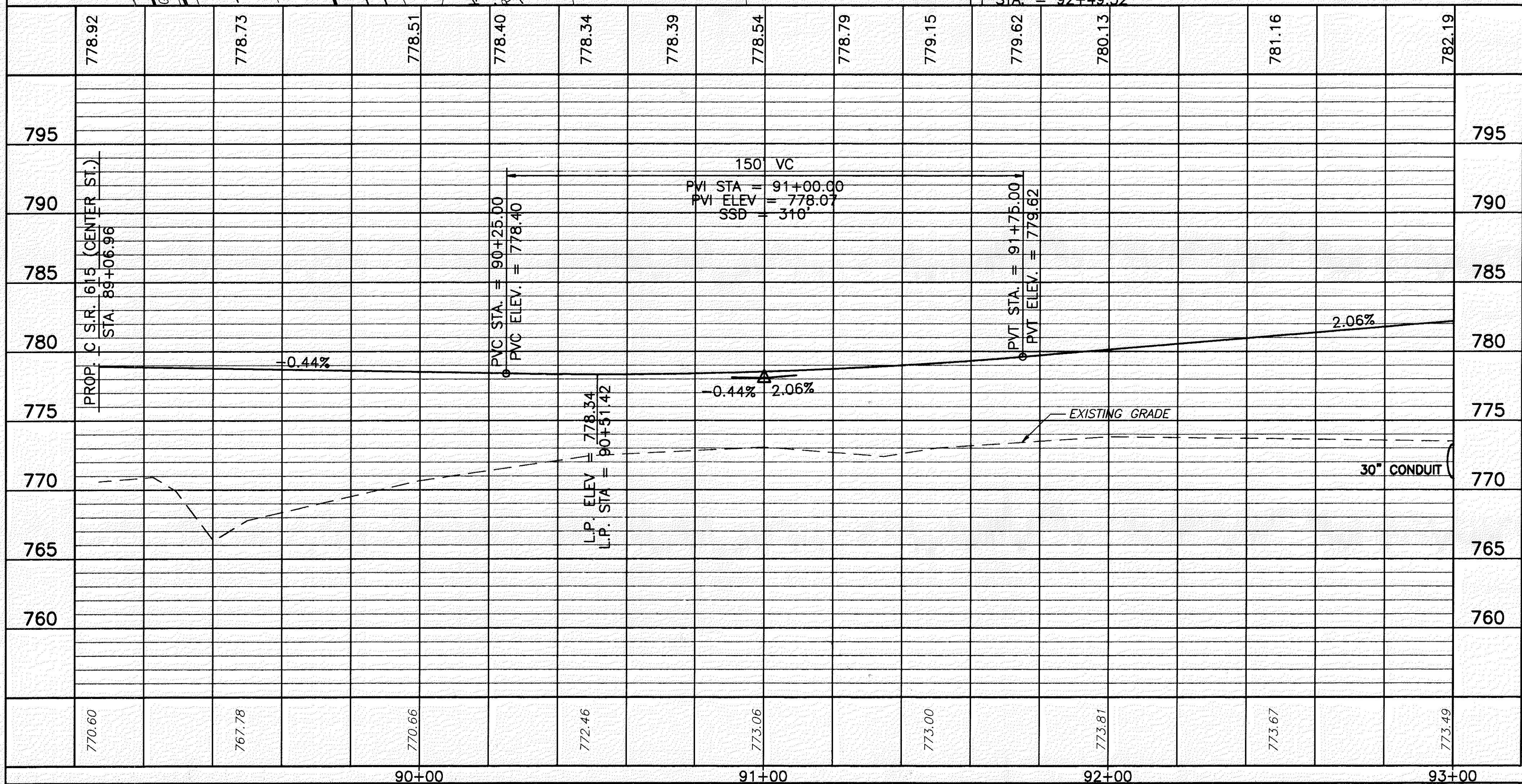


SWTIE#14

BENCH MARK #5
 TOP I.P. SET
 STA.37+23.90, 88.15' LT.
 ELEV. 763.71

EROSION CONTROL WITH TURF REINFORCING MAT (8' WIDE)

FOR TYPICAL SECTIONS, SEE SHEETS 5 THRU 15
 FOR CROSS SECTIONS AND PIPE PROFILES, SEE SHEETS 175 THRU 185
 FOR SUPERELEVATION TABLES, SEE SHEETS 246 THRU 254
 FOR INTERSECTION DETAILS, SEE SHEETS 255 THRU 262
 FOR SIGNING AND PAVEMENT MARKING PLAN, SEE SHEETS 311 THRU 312



| SPECIAL | DESCRIPTION | SO. YD. | CU. YD. | UNFT. | SO. YD. | CU. YD. | UNFT. |
|---------------|--|---------|---------|-------|---------|---------|-------|
| 603 | EROSION CONTROL WITH TURF REINFORCING MAT | | | | 18 | | |
| 603 | 30" CONDUIT, TYPE A, 706.02, OR 36" CONDUIT, TYPE A, 707.05, AS PER PLAN | | | 106 | | | |
| 602 | CONCRETE MASONRY | | 0.56 | | | | |
| 601 | ROCK CHANNEL PROTECTION, TYPE C WITH FILTER | | 3.3 | | | | |
| 601 | RIPRAP 6" REINFORCED CONCRETE SLAB | 3.33 | | | | | |
| TOTALS | | | | | 3.33 | | |

| REF | LOCATION | SO. YD. | CU. YD. | UNFT. |
|---------------|--------------------------------------|---------|---------|-------|
| D-1 | STA. 93+00, 44' LT. TO 61' RT. | | | |
| D-2 | STA. 89+90.8, 20.0' RT. TO 40.0' RT. | | | |
| D-3 | STA. 89+84.1, 6.0' LT. TO 36.0' LT. | | | |
| TOTALS | | | | |

RAMP A - PLAN AND PROFILE STA. 89+06.96 TO STA. 93+00
 LAK-IR90/SR615-9.26/1.51
 169
 393