

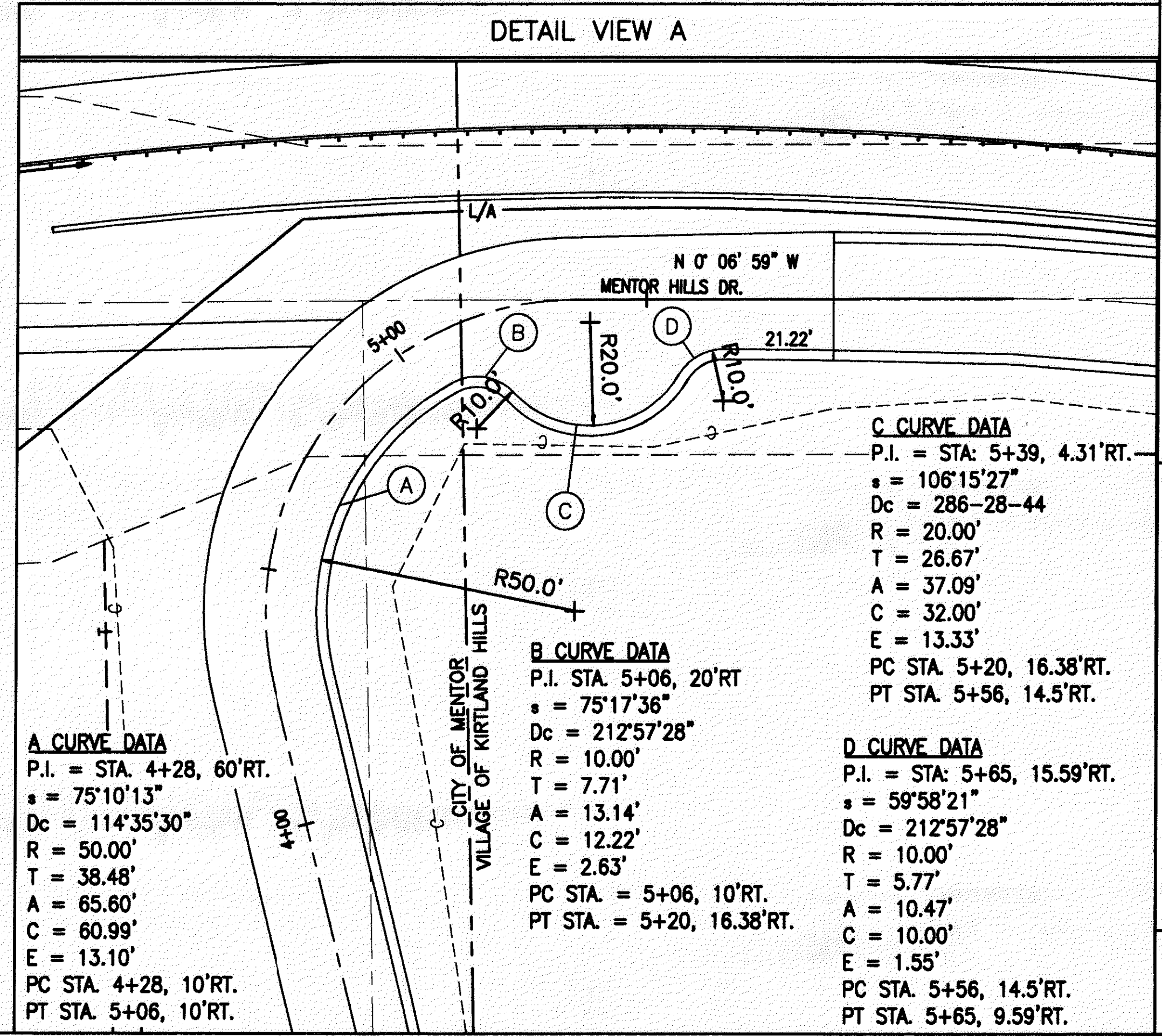
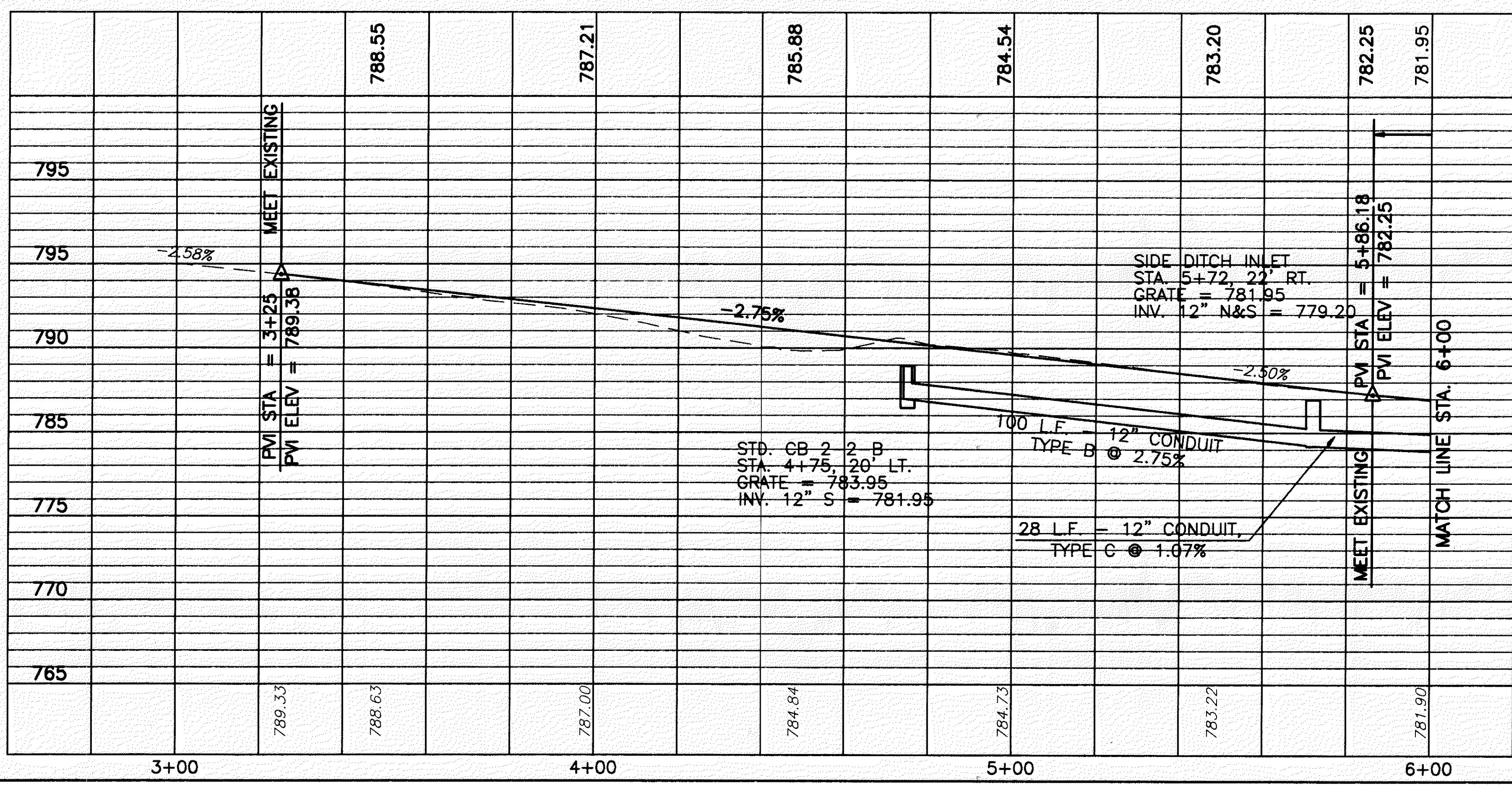
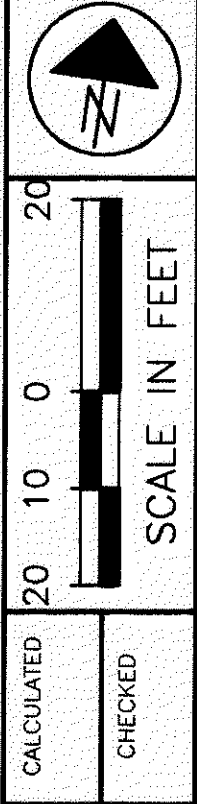
M1 CURVE DATA
 P.I. STA. = 3+43.75
 $\Delta = 12^\circ 36' 15''$
 $R = 150.00'$
 $T = 16.57'$
 $L = 33.00'$
 $E = 0.91'$

M2 CURVE DATA
 P.I. STA. = 5+03.97
 $\Delta = 103^\circ 35' 25''$
 $D_c = 95^\circ 29' 35''$
 $R = 60.00'$
 $T = 76.23'$
 $L = 108.48'$
 $E = 37.04'$
 $e_{max} = 0.020$
 PC STA. = 4+27.70
 PT STA. = 5+36.18

**BEGIN WORK
 STA. 3+25.32**

NO.	DESCRIPTION	UNITS	QUANTITY
604	INLET, SIDE DITCH	EACH	1
604	CATCH BASIN NO. 2-28, AS PER PLAN	EACH	1
603	12" CONDUIT, TYPE C, AS PER PLAN	LIN.FT.	28
603	12" CONDUIT, TYPE B, AS PER PLAN	LIN.FT.	100
TOTALS			

REF	LOCATION	UNITS	QUANTITY
D-1	STA. 4+75, LT. TO STA. 5+72, LT.		
D-2	STA. 5+72, RT. TO STA. 5+76, RT.		
TOTALS			



**MENTOR HILLS DRIVE (PRIVATE)
 PLAN AND PROFILE STA. 3+00 TO STA. 6+00**

LAK-IR90/SR615-9.26/1.51
 162
 393