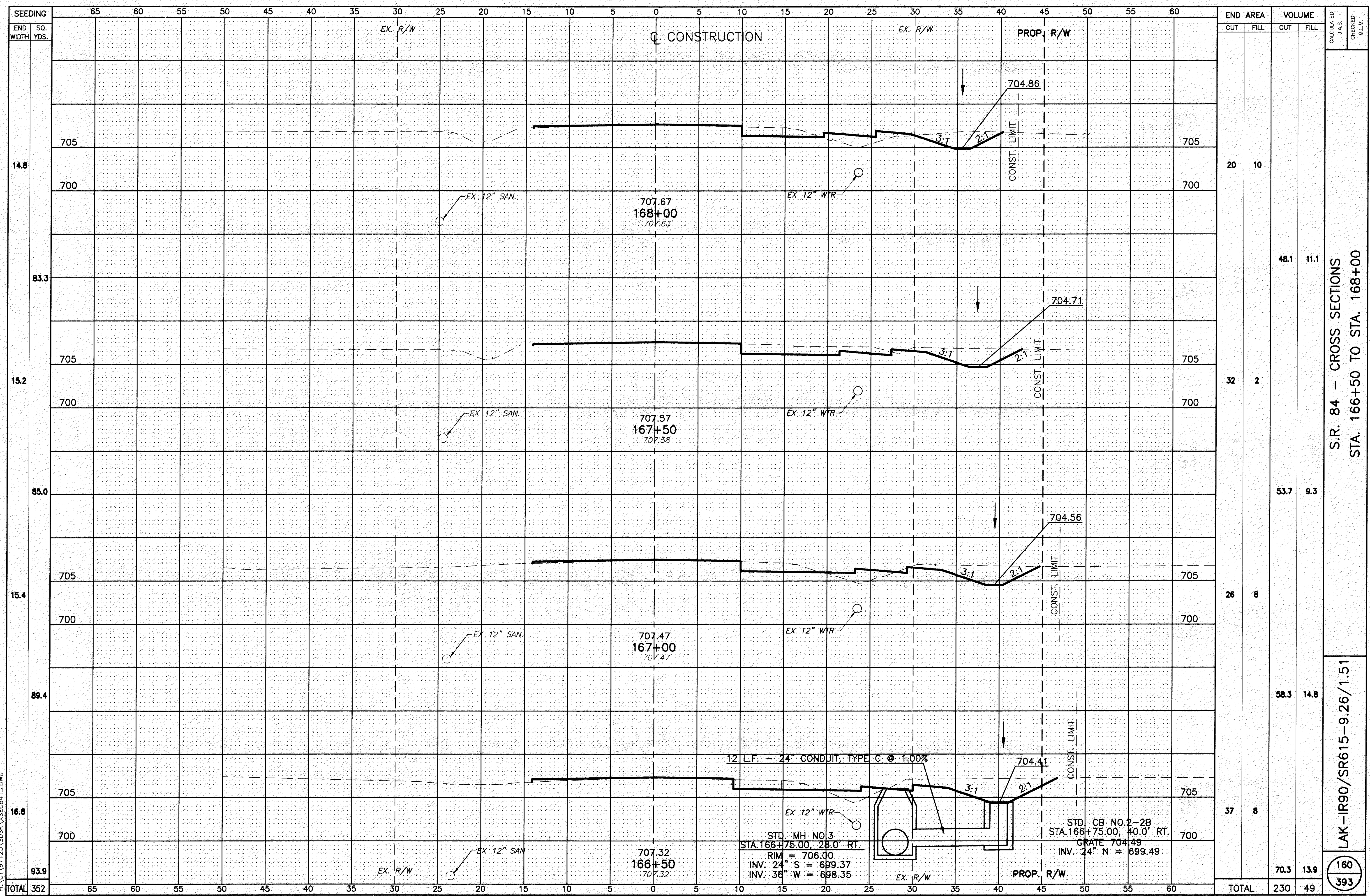


HA:CT\97125\SDSK\XSEC8413.DWG



SEEDING	END AREA		VOLUME	
	CUT	FILL	CUT	FILL
14.8	20	10		
83.3			48.1	11.1
15.2	32	2		
85.0			53.7	9.3
15.4	26	8		
89.4			58.3	14.8
16.8	37	8		
93.9			70.3	13.9
TOTAL	352	352	230	49

S.R. 84 - CROSS SECTIONS
STA. 166+50 TO STA. 168+00

LAK-IR90/SR615-9.26/1.51
160
393

12 L.F. - 24" CONDUIT, TYPE C @ 1.00%

EX. 12" WTR

STD. MH NO.3
STA. 166+75.00, 28.0' RT.
RIM = 708.00
INV. 24" S = 699.37
INV. 36" W = 698.35

EX. R/W

PROP. R/W

STD. CB NO. 2-2B
STA. 166+75.00, 40.0' RT.
GRATE 704.49
INV. 24" N = 699.49