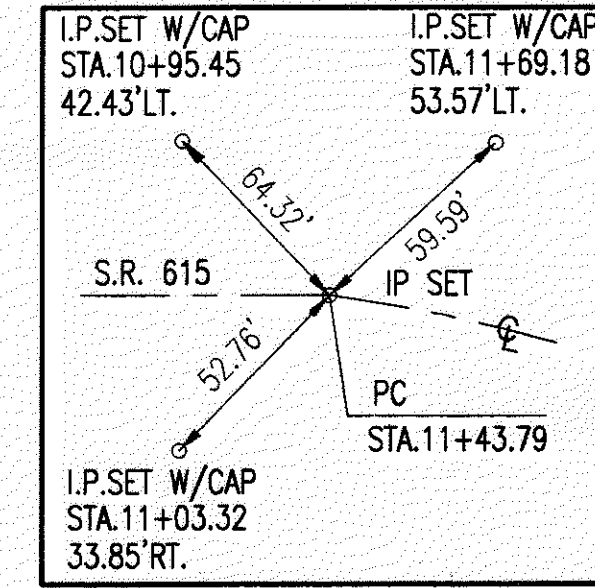
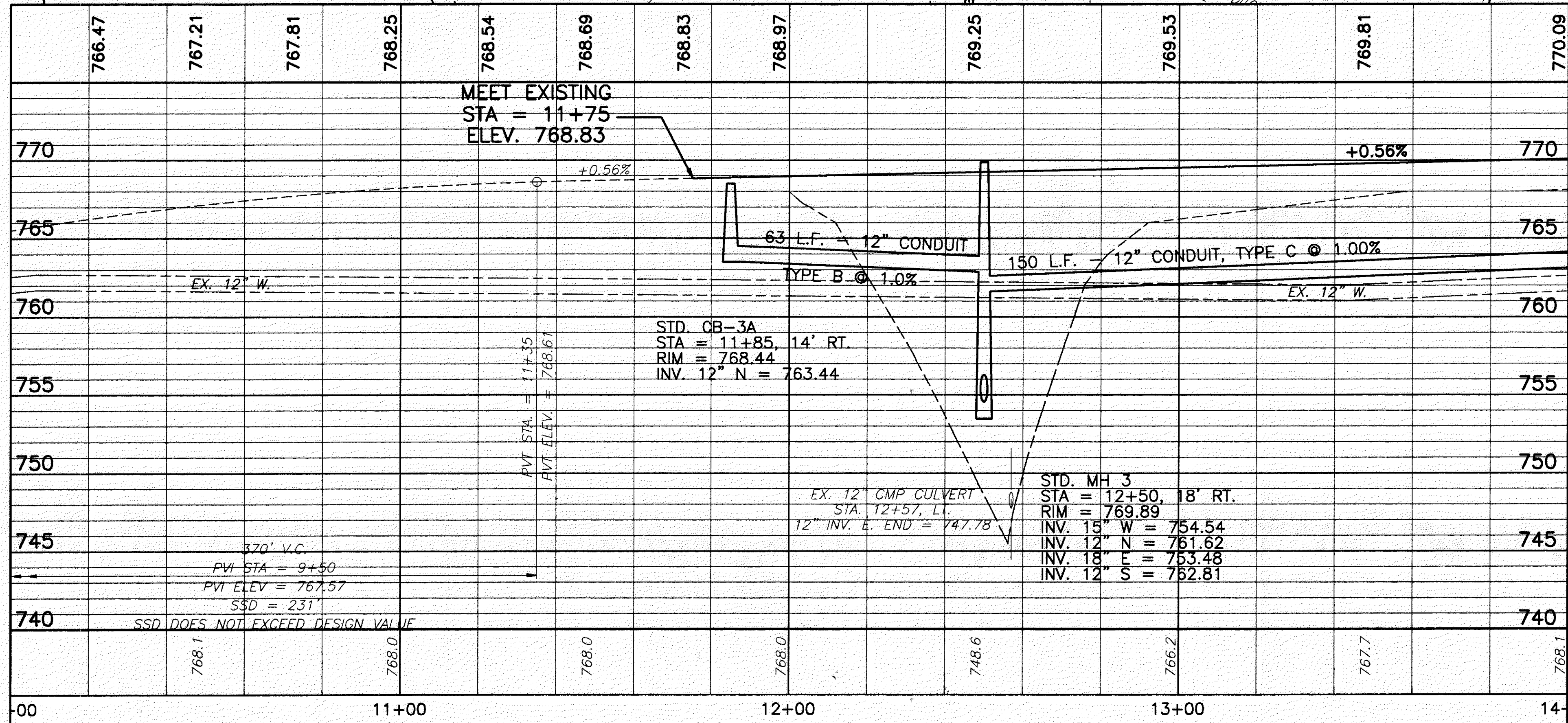


**NOTE:**  
PROJECT LIMIT SET TO TIE INTO THE PROPOSED S.R. 615 PROJECT TO THE SOUTH WITHIN THE VILLAGE OF KIRTLAND HILLS.



**S.R. 615 CURVE DATA**

P.I. STA.	= 13+31.81
Δ	= 22° 16' 37" RT.
D <sub>c</sub>	= 6' 00" 00"
R	= 954.93'
T	= 188.02'
L	= 371.28'
E	= 18.33'
e <sub>max</sub>	= 0.020
PC STA.	= 11+43.79
PT STA.	= 15+15.07



FOR TYPICAL SECTIONS, SEE SHEETS 5 THRU 15  
FOR ROADWAY AND DRAINAGE QUANTITIES, SEE SHEET 62  
FOR CROSS SECTIONS AND PIPE PROFILES, SEE SHEETS 97 THRU 144  
FOR SUPERELEVATION TABLES, SEE SHEETS 246 THRU 254  
FOR INTERSECTION DETAILS, SEE SHEETS 255 THRU 262  
FOR DRIVEWAY PLANS AND PROFILES, SEE SHEETS 267 THRU 281  
FOR DRIVEWAY DETAILS, SEE SHEET 282  
FOR SIGNING AND PAVEMENT MARKING PLAN, SEE SHEETS 299 THRU 307

**BENCH MARK #2**  
TOP I.P. SET  
SWING TIE #3  
STA. 15+33.62, 37.61' RT.  
ELEV. 769.12