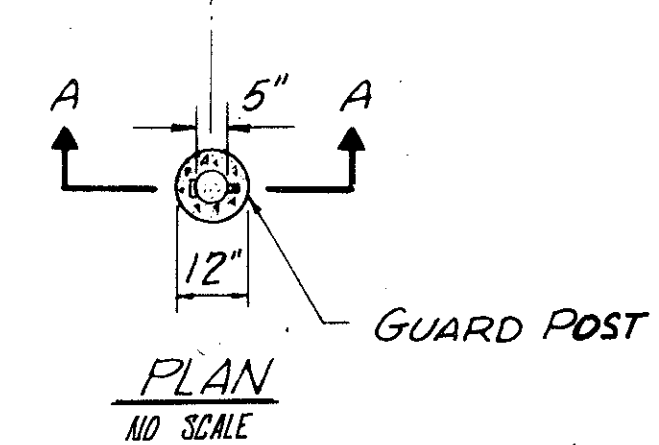
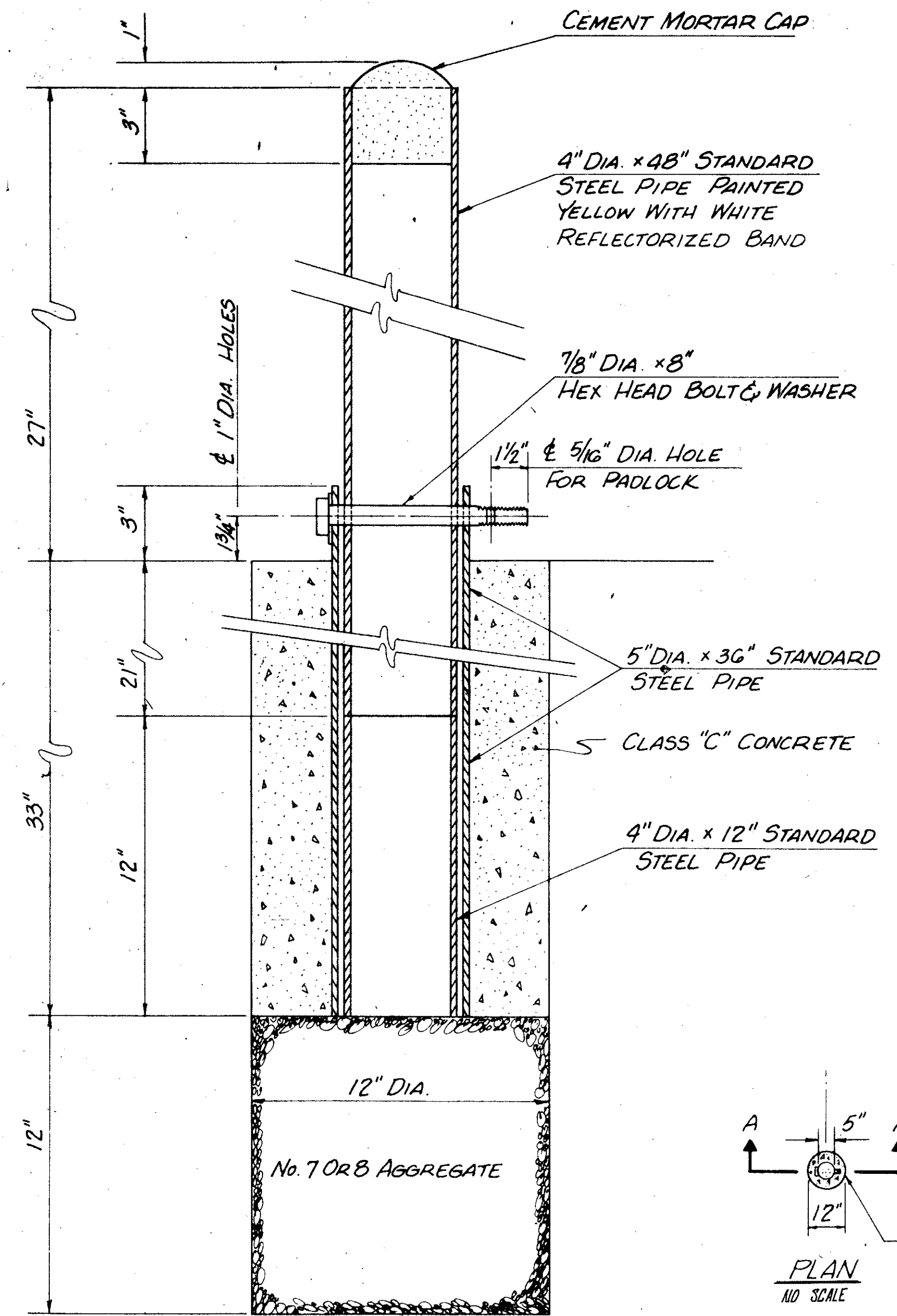
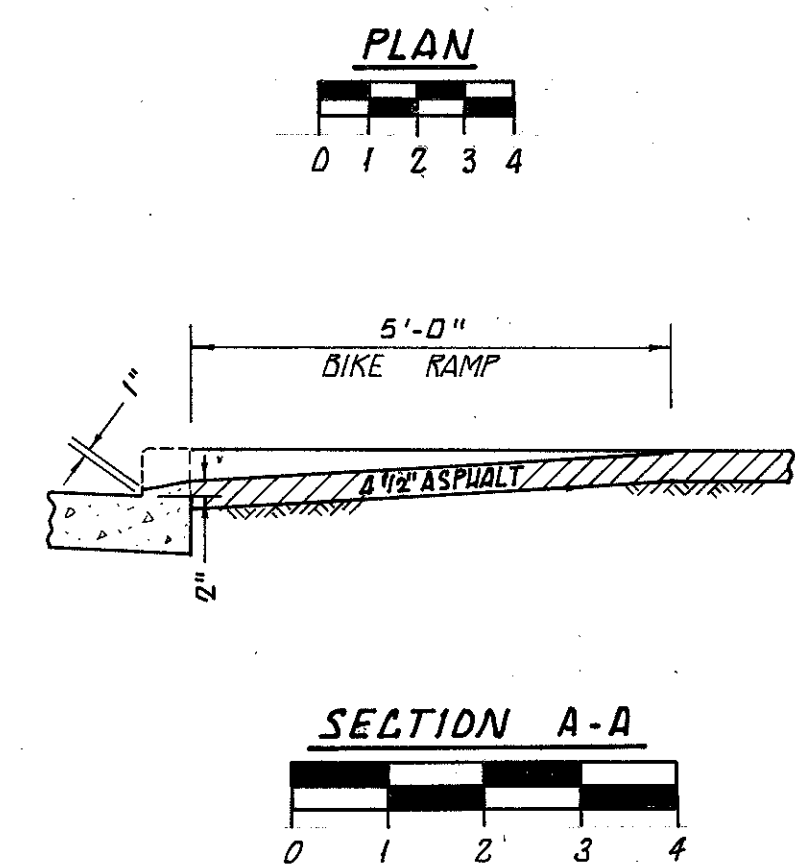
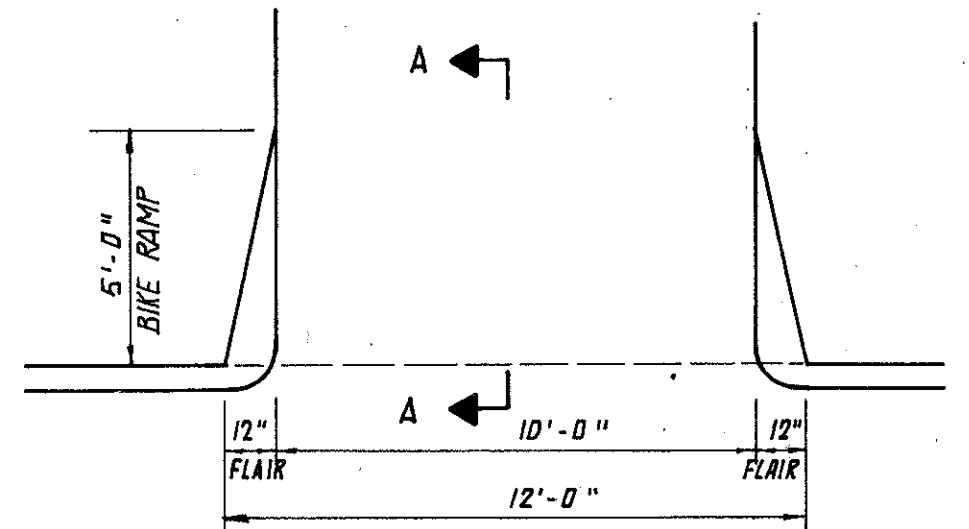


GUARD POST DETAIL
NO SCALE



SECTION A-A

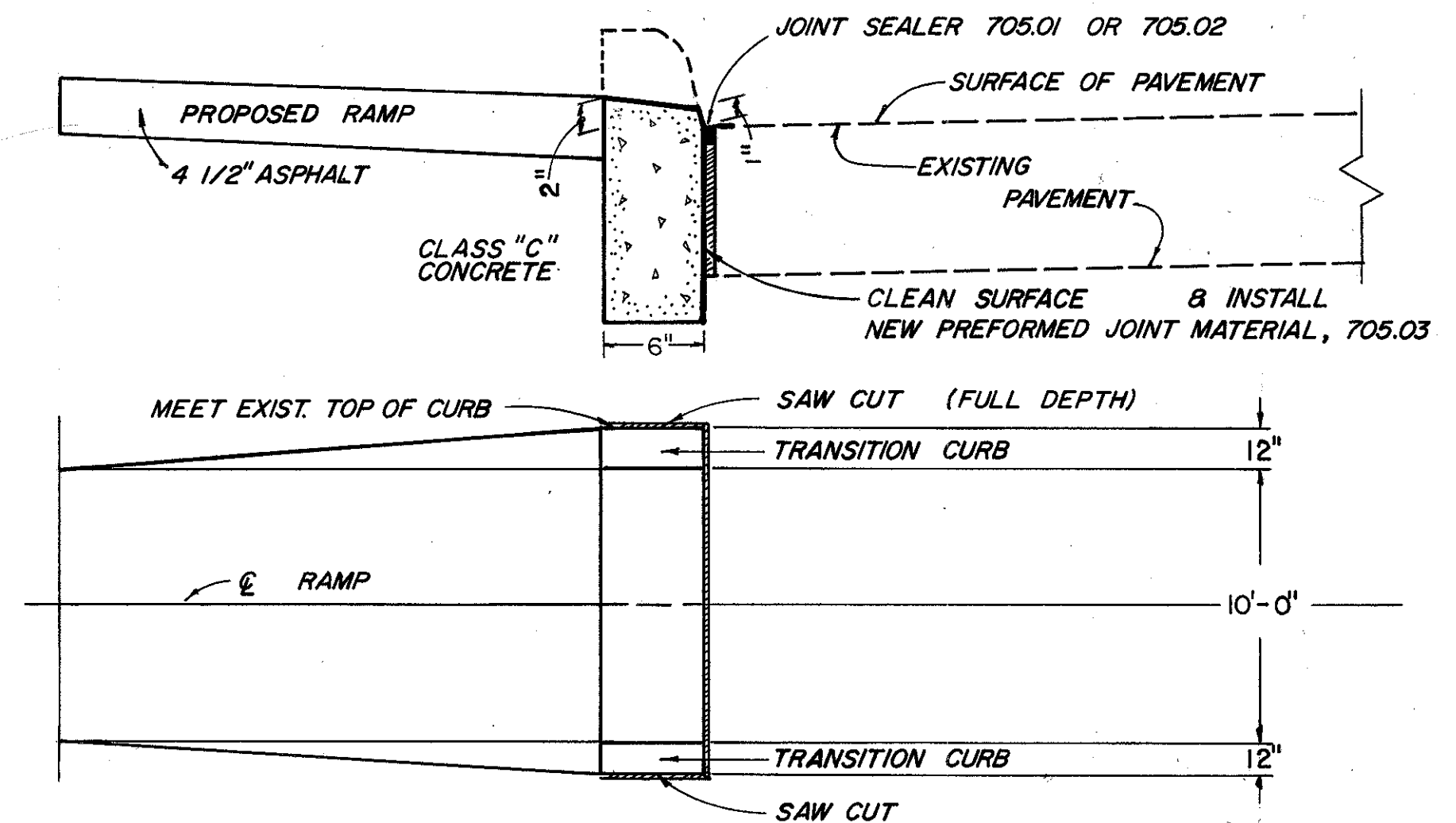
ITEM 606, GUARD POST, AS PER PLAN.
 THIS ITEM SHALL CONSIST OF THE CONSTRUCTION OF GUARD POSTS AS DETAILED. THE CONSTRUCTION SHALL INCLUDE THE FURNISHING, ASSEMBLING AND ERECTING OF ALL COMPONENT PARTS AND MATERIAL, COMPLETE IN PLACE AT THE LOCATION SHOWN ON THE PLANS OR AS DIRECTED BY THE ENGINEER.
 THE STANDARD STEEL PIPES, BOLT AND WASHER SHALL BE GALVANIZED AS DEFINED IN 711.02. PAINTING SHALL BE IN ACCORDANCE WITH ITEM 514. CONCRETE SHALL BE CLASS "C" IN ACCORDANCE TO SECTION 511.03. THE CEMENT MORTAR CAP SHALL BE COMPOSED OF A STIFF MIXTURE OF ONE PART CEMENT AND TWO PARTS OF CLEAN, SHARP SAND. A PADLOCK SHALL BE FURNISHED WITH EACH POST AND SHALL BE EITHER BRASS OR BRONZE PADLOCK EQUAL TO MASTER NO. 4 B.K.A. OR WILSON BOHANNAN GGO. ALL PADLOCKS SUPPLIED ON THE PROJECT SHALL HAVE THE SAME KEY. TWO MASTER KEYS SHALL BE SUPPLIED BY THE CONTRACTOR TO THE CITY OF MENTOR.
 THE PAYMENT FOR EACH, ITEM 606 GUARD POST, AS PER PLAN, SHALL INCLUDE THE TOTAL COST FOR FURNISHING ALL MATERIALS AND THE CONSTRUCTION OF THE GUARD POST AS DETAILED



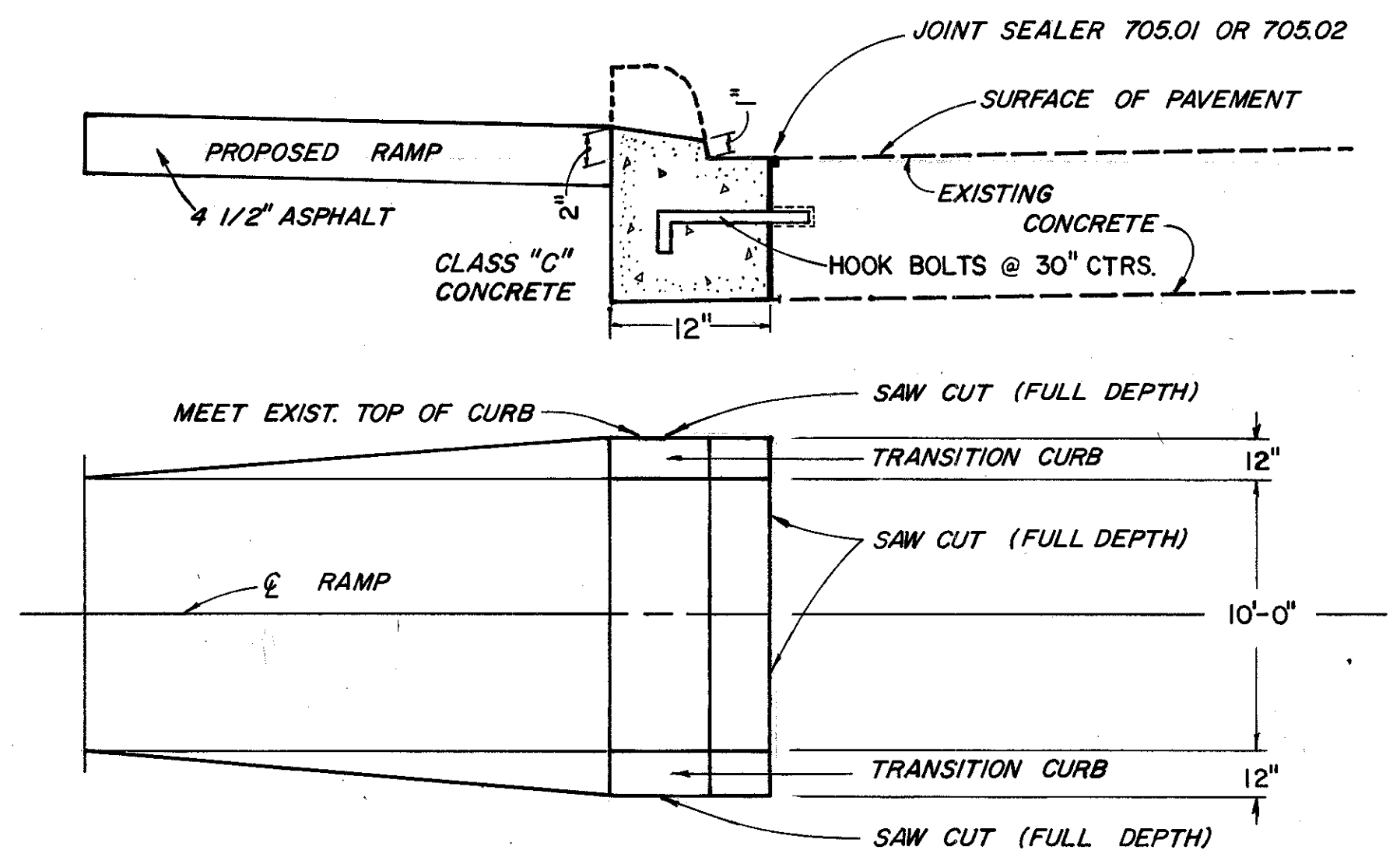
BIKE RAMP DETAIL

BASIS OF PAYMENT
 THE PER EACH PRICE STIPULATED FOR BIKE RAMP UNDER ITEM 606 SHALL INCLUDE THE FURNISHING OF ASPHALT PER TYPICAL DETAIL, ALL CONCRETE, FORMING, HOOK BOLTS, JOINT SEALER, JOINT MATERIALS, AND SAW CUTTING PER CURB REPLACEMENT DETAIL AND THE FURNISHING OF ALL LABOR, TOOLS, MATERIALS AND APPLIANCES NECESSARY TO COMPLETE THE WORK IN ACCORDANCE WITH THE DRAWINGS AND SPECIFICATIONS.

TYPE 6



TYPE 2-A



CURB REPLACEMENT DETAIL

NO SCALE

CIVIC CENTER BIKE PATH