

CALC.  
BY: JJC  
DATE: 12/90  
CHKD.  
BY: PJW  
DATE: 1/91

LAK - 615 - 5.12

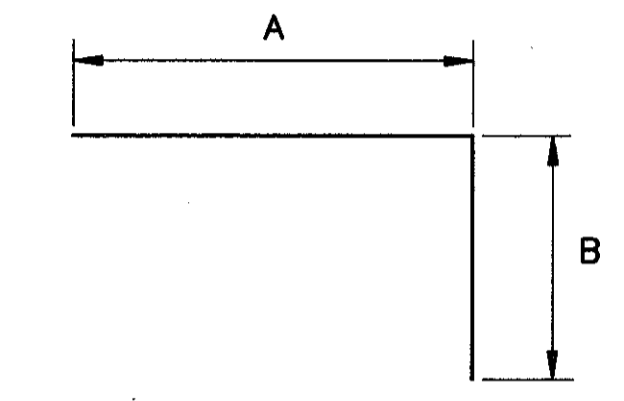
OHIO  
FHWA 5  
REGION

147  
164

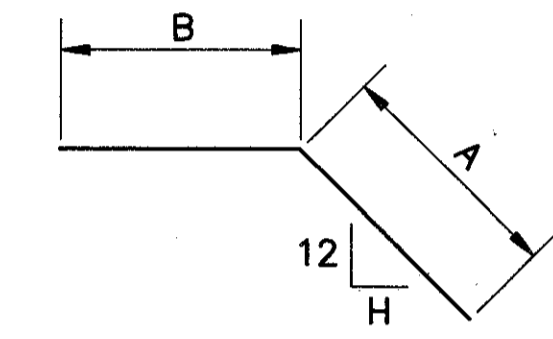
REINFORCING STEEL BAR SCHEDULE

MARK	NO. REQUIRED		LENGTH	TYPE	A	B	C	D	H	WEIGHT (LBS)
		TOTAL								
501		8	2'-6"	9	1'-6"	12"				21
502	2-SERIES OF 3*		4'-3" 6'-9"	9	1'-6"	2'-9" 5'-3"				34
503		4	20'-5"	STR.						85
504		8	4'-0"	9	1'-6"	2'-6"				33
505	2-SERIES OF 3*		4'-3" 6'-9"	9	1'-6"	2'-9" 5'-3"				34
506		8	15'-5"	STR.						129
507	2-SERIES OF 3		4'-9" 12'-3"	STR.	VARY BY 3'-9"					53
508		8	13'-8"	STR.						114
509	2-SERIES OF 3		7'-4" 13'-4"	STR.	VARY BY 3'-0"					65
510		2	16'-5"	STR.						34
511		2	14'-2"	STR.						30
512		4	8'-8"	STR.						36
601		66	3'-10"	5	3'-2"	10"				380
602	2-SERIES OF 14		8'-0" 10'-11"	STR.	VARY BY 2 3/4"					398
603	2-SERIES OF 16		5'-11" 10'-11"	STR.	VARY BY 4"					406
604		6	10'-11"	STR.						99
605	4-SERIES OF 4		2'-0" 6'-6"	STR.	VARY BY 1'-6"					102
606	4-SERIES OF 5		0'-6" 1'-6"	STR.	VARY BY 3"					30
701	2-SERIES OF 8**		17'-2" 19'-6"	9	2'-0"	15'-2" 17'-6"				600
702	2-SERIES OF 8		19'-4" 24'-0"	STR.	VARY BY 8"					709
703		2	19'-6"	STR.						80
704		2	17'-2"	9	2'-0"	15'-2"				70
705		32	5'-11"	5	5'-1"	12"				387
706	2-SERIES OF 8		15'-4" 17'-4"	9	2'-0"	13'-4" 15'-4"	VARY BY 3 1/2"		24	534
707		2	15'-6"	9	2'-0"	13'-6"				63
801		116	8'-6"	STR.						2633
802		49	4'-5"	6	6"	2'-2" 2'-2"				578
TOTAL WEIGHT = 7,737 LBS										

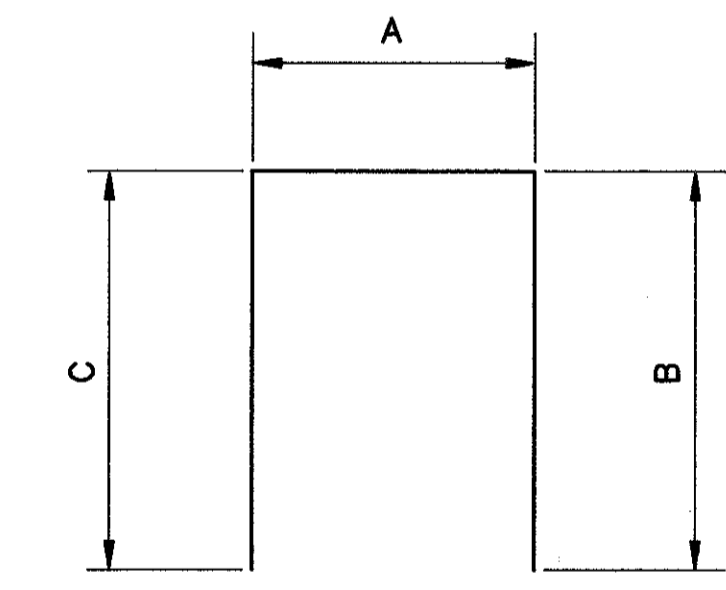
NOTE: THE COST OF FURNISHING AND INSTALLING THE REINFORCING STEEL IS TO BE INCLUDED IN THE COST OF ITEM 602 CONCRETE MASONRY.



TYPE 5



TYPE 9



TYPE 6

\* VARY DIMENSION B BY 1'-3" IN SERIES  
\*\* VARY DIMENSION B BY 4" IN SERIES