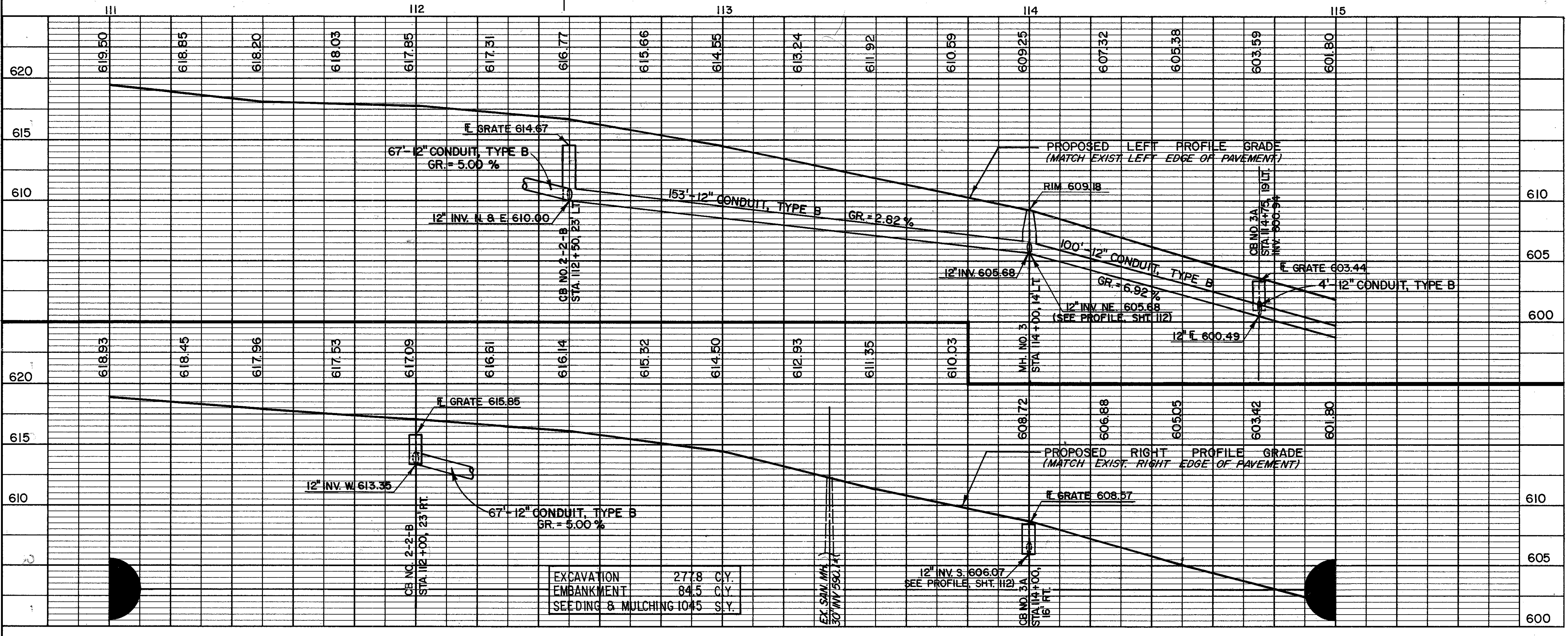


FOR TYPICAL SECTION SEE SHEET 111
 FOR CROSS SECTIONS SEE SHEET 111L THRU 113
 FOR SIGNING PLAN SEE SHEET 152
 FOR PAVEMENT MARKING DETAILS SEE SHEET 154
 FOR DRIVEWAY PROFILES SEE SHEET 141 & 142
 FOR DRIVEWAY DETAILS SEE SHEET 19
 FOR CURB DETAILS SEE SHEET 144
 FOR DRAINAGE DETAILS SEE SHEET 144
 FOR PAVEMENT REPLACEMENT DETAILS SEE SHEET 144
 FOR RIGHT-OF-WAY PLANS SEE SHEET 162 & 163

* NOTE: TAPER CURB HEIGHT FROM 6' TO 0' IN 10'-0".



EXCAVATION	277.8 C.Y.
EMBANKMENT	84.5 C.Y.
SEEDING & MULCHING 10x5	S.Y.

ROADWAY		PIPE REMOVED, 24" & UNDER
REF.	LOCATION	L.F.
R-1	STA. 112+23, 19' RT.	42
TOTALS		42

DRAINAGE		12" CONDUIT, TYPE B	CATCH BASIN, NO. 2-2-B A.P.P.	MANHOLE NO. 3	CATCH BASIN, NO. 3A WITH "V" GRATE
REF.	LOCATION	L.F.	E.A.	E.A.	E.A.
D-1	STA. 112+00, 23' RT. TO 112+50, 23' LT.	67			
D-2	STA. 112+50, 23' LT. TO 114+00, 14' LT.	153			
D-3	STA. 114+00, 14' LT. TO 115+00, 15' LT.	100			
D-4	STA. 114+00, 16' RT. TO 114+00, 14' LT.	30			
D-5	STA. 114+75, 19' LT. TO 114+75, 15' LT.	4			
D-6	STA. 112+00, 23' RT.		1		
D-7	STA. 112+50, 23' LT.		1		
D-8	STA. 114+00, 16' RT.			1	
D-9	STA. 114+00, 14' LT.			1	
D-10	STA. 114+75, 19' LT.				1
TOTALS		354	2	1	2

HOPKINS ROAD