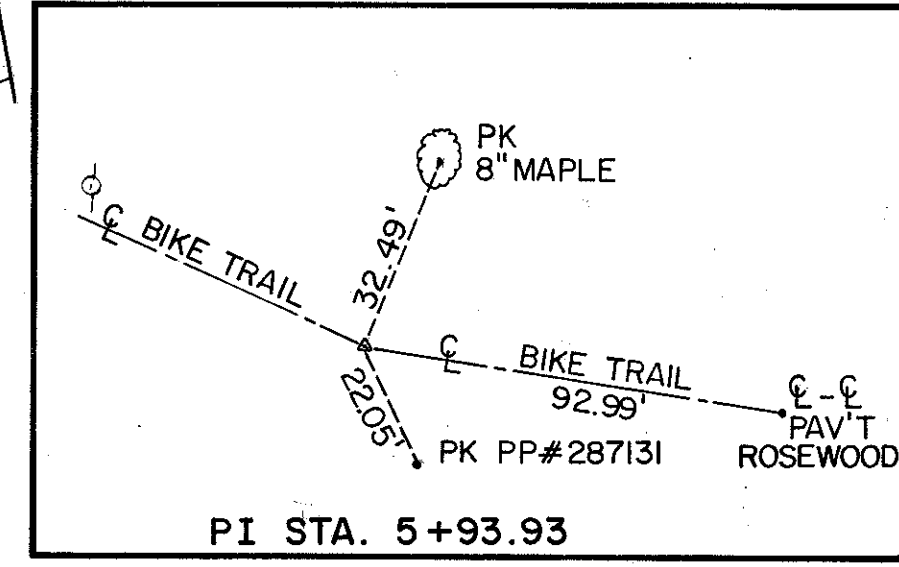
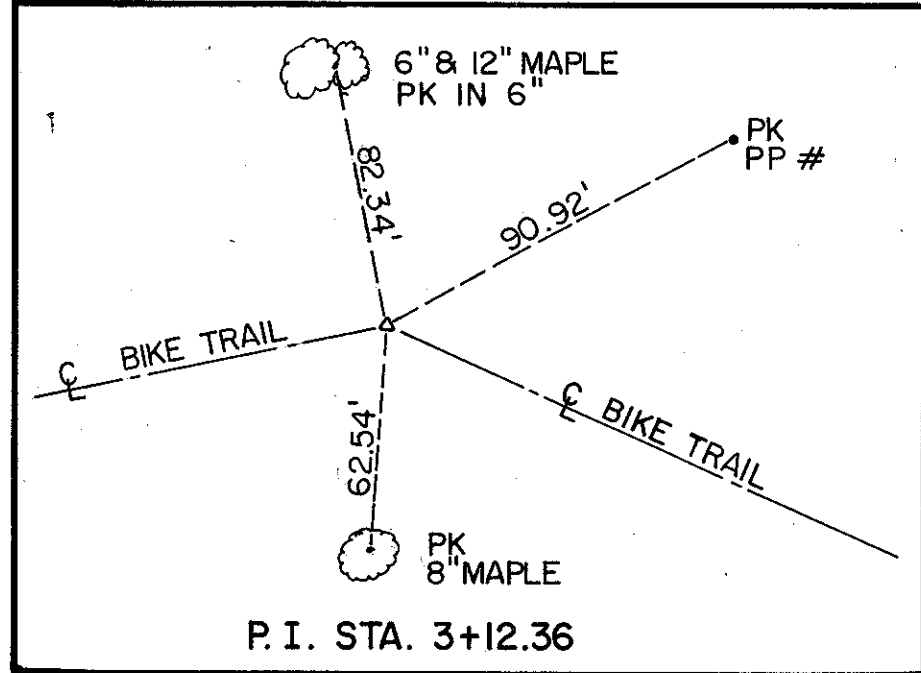
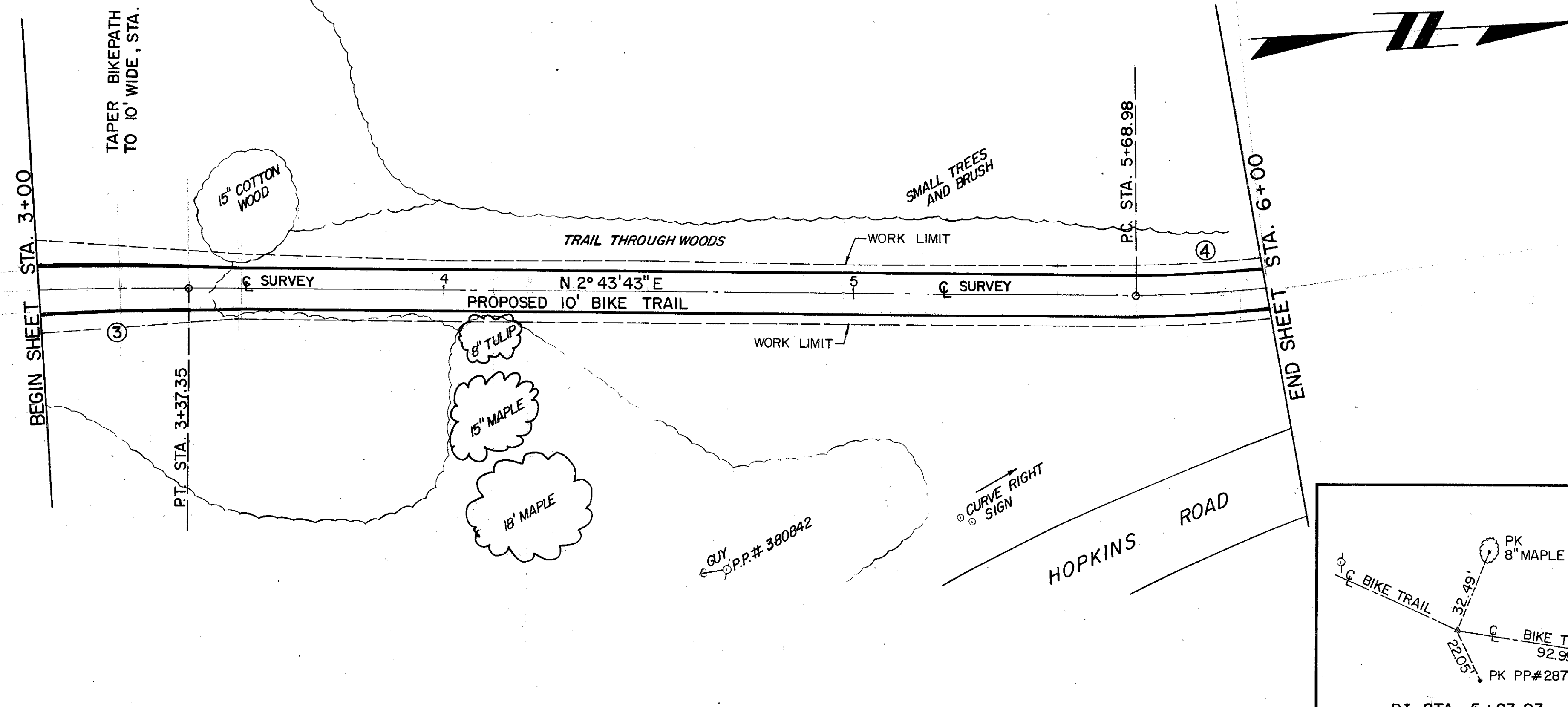


PROPERTY OWNER:
THE CITY OF MENTOR

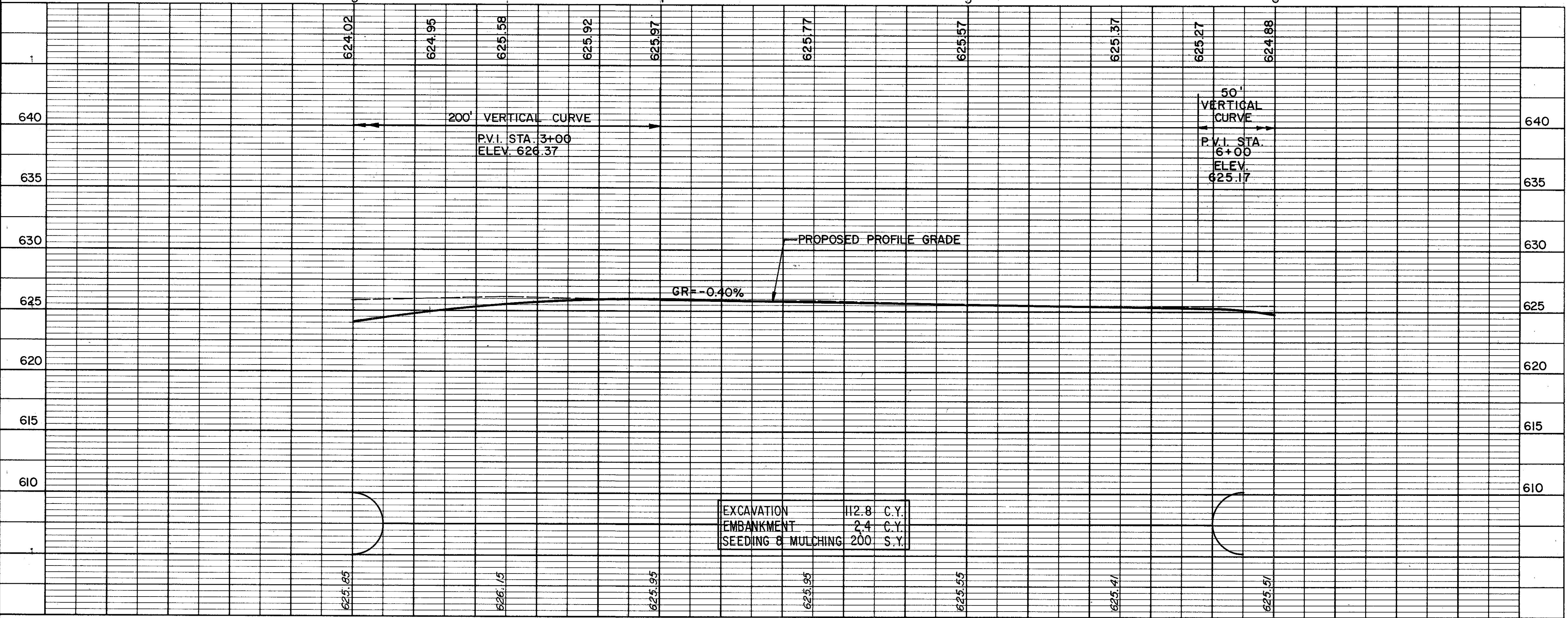
TAPER BIKEPATH FROM 12' WIDE
TO 10' WIDE, STA. 3+00 TO 3+50



BIKE PATH CURVE DATA

| ③ | ④ |
|----------------|----------------|
| R = 744.79' | R = 313.24' |
| Δ = 3° 50' 42" | Δ = 9° 07' 35" |
| T = 25.00' | T = 25.00' |
| C = 49.97' | C = 49.84' |
| L = 49.98' | L = 49.89' |

FOR TYPICAL SECTION SEE SHEET 9
 FOR CROSS SECTIONS SEE SHEET 92 THRU 95
 FOR SIGNING PLAN SEE SHEET 151
 FOR PAVEMENT MARKING DETAILS SEE SHEET 154



PLAN & PROFILE STA. 3+00 TO STA. 6+00

TRAIL ROUTE