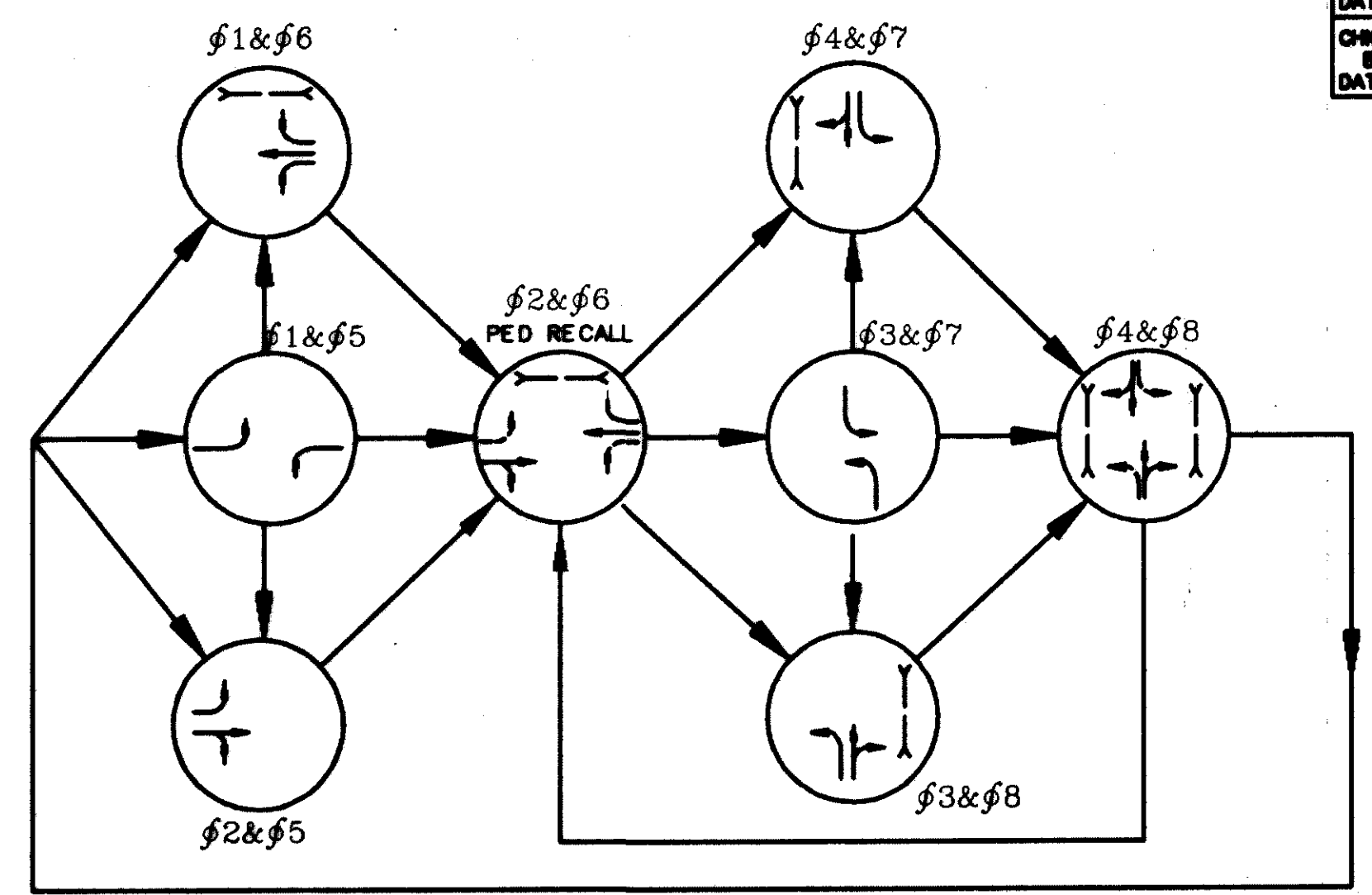
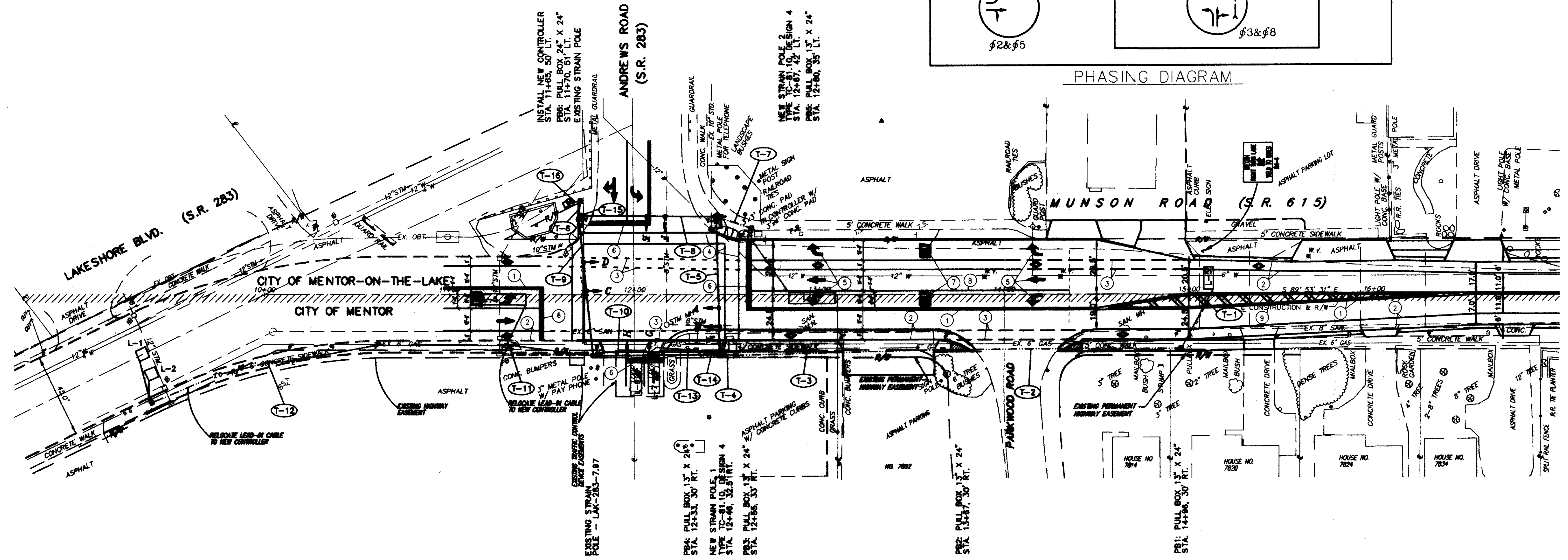
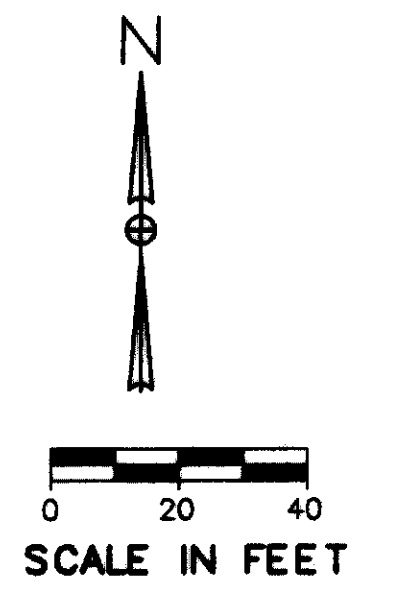


NOTE: STRAIN POLES, SIGNAL HEADS, EXISTING CONTROLLER AND CABINET TO BE REMOVED SHALL BE STORED FOR SALVAGE BY THE CITY OF MENTOR. CONTRACTOR SHALL DISPOSE OF ANY SIGNAL ITEMS NOT SALVAGED BY THE CITY BY THE PROJECT COMPLETION DATE.

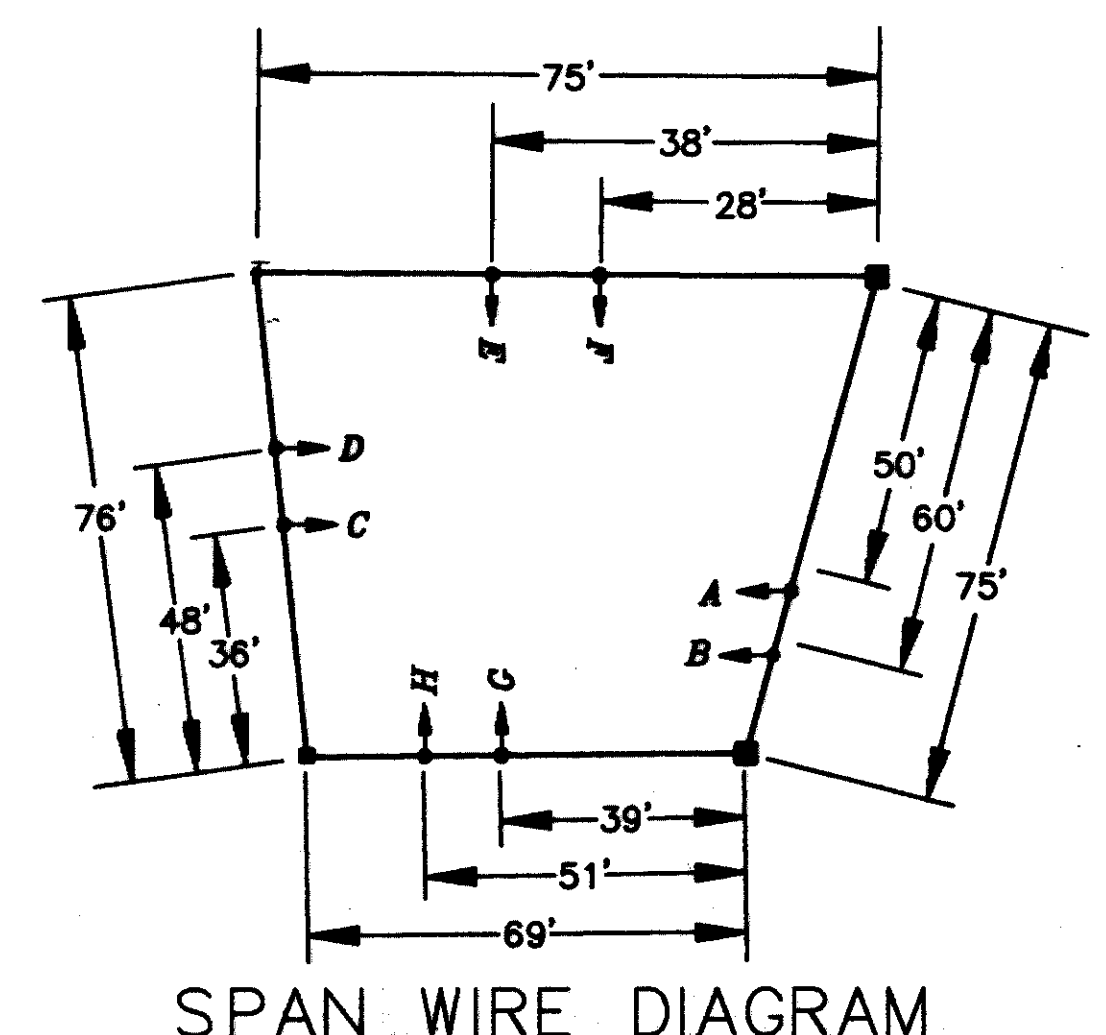
NOTE: PLEASE CONTACT THE CITY OF MENTOR PRIOR TO ORDERING MATERIALS FOR THIS INTERSECTION. THE CITY RESERVES THE RIGHT TO ELIMINATE ANY PART OF THIS SIGNAL INSTALLATION. SIGNAL TIMING AND PHASING MODIFICATIONS SHALL BE COORDINATED BETWEEN THE CITY AND THE CONTRACTOR.



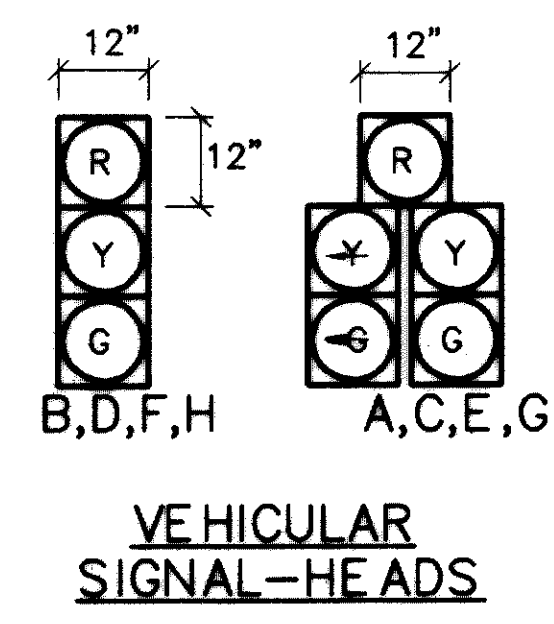
PHASING DIAGRAM



- LEGEND
- ① ITEM 642 - CENTER LINE, DOUBLE, SOLID
 - ② ITEM 642 - EDGE LINE, WHITE
 - ③ ITEM 642 - DOTTED LINE, 4" WHITE
 - ④ ITEM 642 - CROSSWALK LINE
 - ⑤ ITEM 642 - LANE ARROW
 - ⑥ ITEM 642 - STOP LINE
 - ⑦ ITEM 642 - WORD ON PAVEMENT
 - ⑧ ITEM 642 - CHANNELIZING LINE
 - ⑨ ITEM 642 - TRANSVERSE LINE



SPAN WIRE DIAGRAM



VEHICULAR SIGNAL-HEADS

LOOP	SIZE	TURNS	MODE	DELAY	PHASE	RE MARK	INHIBITED DELAY	LOCATION 1st FRONT CORNER	LOCATION 2nd FRONT CORNER
L-1						EXISTING			
L-2						EXISTING			
L-3						EXISTING			
L-4	6X25	2				REPLACE EXIST		STA. 12+84, 1'LT	STA. 12+84, 5'RT
L-5	5X12	2				REPLACE EXIST		STA. 15+08, 3'LT	STA. 15+13, 3'LT
L-6	6X20	2				REPLACE EXIST		STA. 11+98, 34'RT	STA. 12+04, 34'RT
L-7	6X20	2				REPLACE EXIST		STA. 12+08, 33'RT	STA. 12+14, 33'RT

LOOP DETECTOR CHART

DATE: 07-23-88, CT CONSULTANTS, INC. H:\V\25353\CAD\TRAFFIC\ANDREWS.DWG Scale: 1"=30'