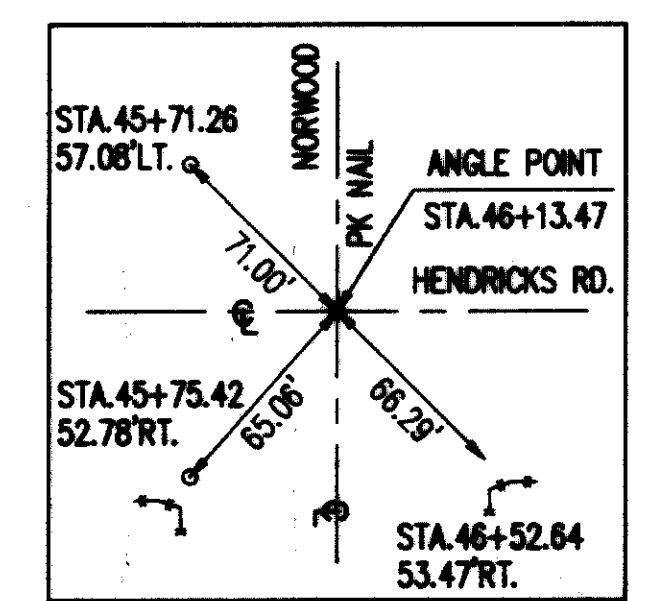


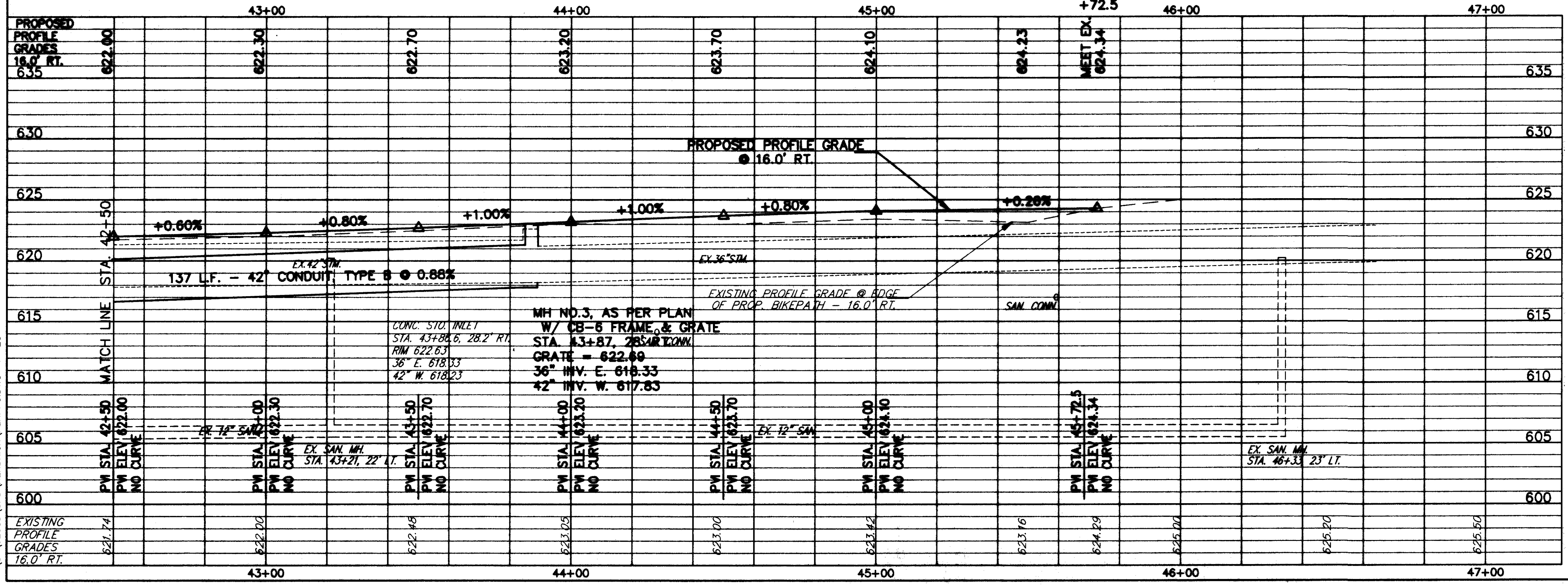
FOR TYPICAL SECTIONS SEE SHEET 13  
 FOR CROSS-SECTIONS SEE SHEETS 149 THRU 165  
 FOR DRIVEWAY SCHEDULE & DETAILS SEE SHEET 24  
 FOR DRIVEWAY PROFILES SEE SHEET 166  
 FOR PAVEMENT DETAILS SEE SHEET 171  
 FOR TRAFFIC CONTROL DETAILS SEE SHEETS 172 THRU 198  
 FOR MAINTENANCE OF TRAFFIC DETAILS SEE SHEETS 17 & 18

**BENCH MARK #5**  
 SOUTH CORNER MONUMENT BOX  
 ON  $\bar{C}$  NORWOOD DRIVE, 49.77'  
 NORTH OF  $\bar{C}$  HENDRICKS ROAD  
 ELEV. = 624.77



SPEC.	DESCRIPTION	QTY.	UNIT	TOTAL
830	CURB, TYPE 3		LN.FT.	339
448	1-1/4" ASPH. CONC. SURFACE COURSE, TYPE 1, PG64-22		CU.YD.	12.7
448	1-3/4" ASPH. CONC. INTERMEDIATE COURSE, TYPE 2, PG64-22		CU.YD.	17.8
408	BITUMINOUS PRIME COAT (0.40 GAL./SQ.YD.)		GAL.	147
407	TACK COAT FOR INTERMEDIATE COURSE (0.05 GAL./SQ.YD.)		GAL.	18.4
304	6" AGGREGATE BASE, AS PER PLAN		CU.YD.	61.2
203	SUBGRADE COMPACTION		SQ.YD.	367
	SOIL STERILANT		SQ.YD.	367
<b>TOTALS</b>				<b>367</b>

REF.	LOCATION	QTY.	UNIT	TOTAL
P-1	STA. 42+50 TO 45+89, RT. = 3303 S.F.			
<b>TOTALS</b>				<b>367</b>



ROADWAY		QTY.	UNIT	TOTAL
REF.	LOCATION			
R-1	STA. 45+32.5 TO STA. 45+36.5, 26' RT. TO 96.6' RT.	284	SQ.FT.	
<b>TOTALS</b>		<b>284</b>		

DRAINAGE & SANITARY		LN.FT.	EACH	TOTAL
REF.	LOCATION			
D-1	STA. 42+50, 26.5' RT. TO STA. 43+87, 28' RT.	X	X	
<b>TOTALS</b>		<b>X</b>	<b>X</b>	

H:\CT\92535\CAD\HENDRICK\HENDRICK.DWG 1"=20'

HENDRICKS ROAD PLAN & PROFILE STA. 42+50 TO STA. 47+00