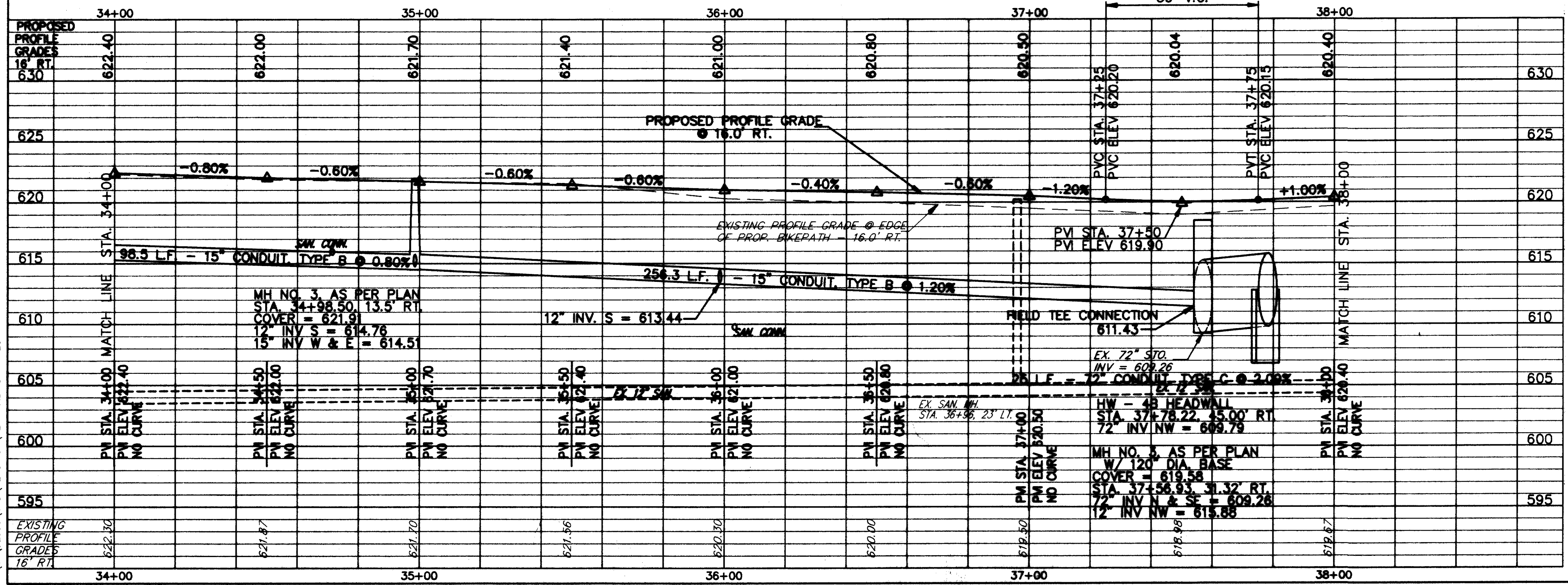


**BENCH MARK #4**  
 NORTHEAST CORNER BOTTOM  
 STEP, HOUSE NUMBER 8800  
 ELEV. = 623.03  
 BM4

FOR TYPICAL SECTIONS SEE SHEET 13  
 FOR CROSS-SECTIONS SEE SHEETS 149 THRU 165  
 FOR DRIVEWAY SCHEDULE & DETAILS SEE SHEET 24  
 FOR DRIVEWAY PROFILES SEE SHEET 166  
 FOR PAVEMENT DETAILS SEE SHEET 171  
 FOR TRAFFIC CONTROL DETAILS SEE SHEETS 172 THRU 198  
 FOR MAINTENANCE OF TRAFFIC DETAILS SEE SHEETS 17 & 18

ITEM NO.	DESCRIPTION	UNIT	QUANTITY	UNIT PRICE	TOTAL
830	CURB, TYPE 3	LN.FT.	400		400
448	1-1/4" ASPH. CONC. SURFACE COURSE, TYPE 1, PG64-22	CU.YD.	15.4		15.4
448	1-3/4" ASPH. CONC. INTERMEDIATE COURSE, TYPE 2, PG64-22	CU.YD.	21.6		21.6
408	BITUMINOUS PRIME COAT (0.40 GAL./SQ.YD.)	GAL.	178		178
407	TACK COAT FOR INTERMEDIATE COURSE (0.05 GAL./SQ.YD.)	GAL.	22.2		22.2
304	6" AGGREGATE BASE, AS PER PLAN	CU.YD.	74.1		74.1
203	SUBGRADE COMPACTION	444	444		444
SPEC.	SOIL STERILANT	444	444		444
<b>TOTALS</b>					



ROADWAY		PIPE REMOVED, 24" & UNDER	GUARDRAIL REMOVED	GUARDRAIL TYPE 5, AS PER PLAN	ANCHOR ASSEMBLY, TYPE A, AS PER PLAN
REF	LOCATION	LN.FT.	LN.FT.	LN.FT.	EACH
R-1	STA. 34+00 TO STA. 34+20, RT.	20			
R-2	STA. 35+31 TO STA. 35+51, RT.	20			
R-3	STA. 36+29 TO STA. 36+53, RT.	24			
R-4	STA. 36+82 TO STA. 38+00, RT.		118		
R-5	STA. 36+75 TO STA. 38+00, RT.			100	1
<b>TOTALS</b>		64	118	100	1

DRAINAGE & SANITARY		CONCRETE MASONRY	12" CONDUIT, TYPE B AS PER PLAN	18" CONDUIT, TYPE B AS PER PLAN	72" CONDUIT, TYPE C AS PER PLAN	MANHOLE NO. 3, AS PER PLAN	MANHOLE NO. 3, AS PER PLAN W/120" DIA. BASE	CATCH BASIN, NO. 6, AS PER PLAN
REF	LOCATION	CU.YD.	LN.FT.	LN.FT.	LN.FT.	EACH	EACH	EACH
D-1	STA. 34+00 TO STA. 34+98.5, 13.5' RT.		98.5			1		
D-2	STA. 34+98.5, 13.5' RT. TO 27.5' RT.		14					1
D-3	STA. 34+98.5 TO STA. 37+56.3, 13.5' RT.		256.3					
D-4	STA. 35+98.5, 13.5' RT. TO 27.5' RT.		14					1
D-5	STA. 37+44, 27.5' RT. TO STA. 37+57, 31.3' RT.		12				1	
D-6	STA. 37+57, 31.3' RT. TO STA. 37+78.22, 45' RT.	2.77		25				
<b>TOTALS</b>		2.77	40	354.8	25	1	1	2

H:\CT\92535\CAD\HENDRICKS\HENDRICKS.P7.DWG 1"=20'

HENDRICKS ROAD PLAN & PROFILE STA. 34+00 TO STA. 38+00