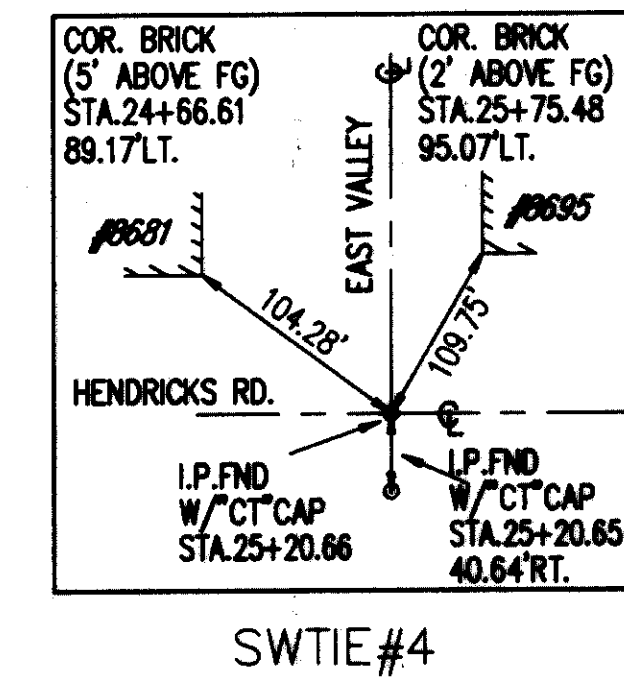
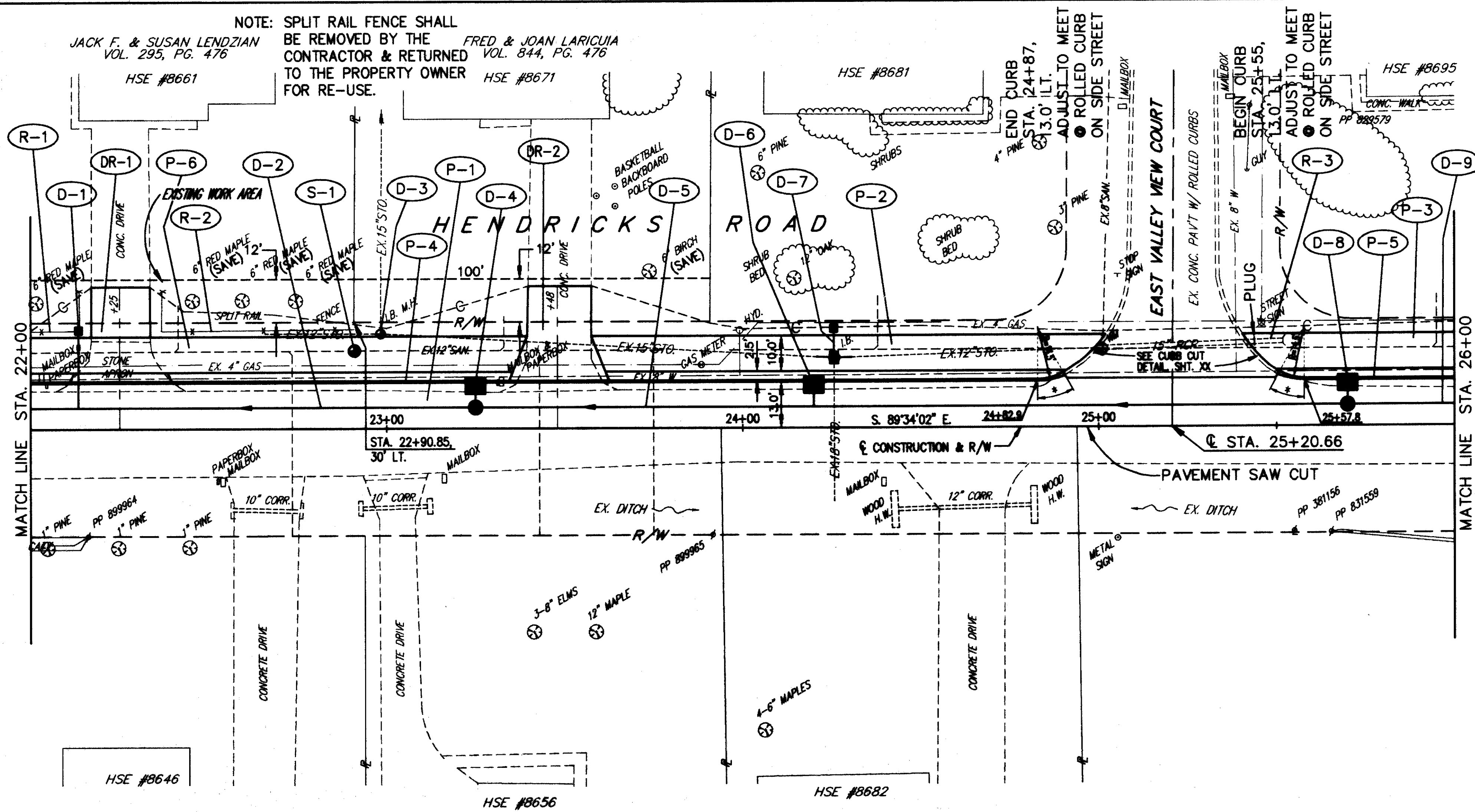


NOTE: SPLIT RAIL FENCE SHALL BE REMOVED BY THE CONTRACTOR & RETURNED TO THE PROPERTY OWNER FOR RE-USE.

JACK F. & SUSAN LENDZIAN VOL. 295, PG. 476

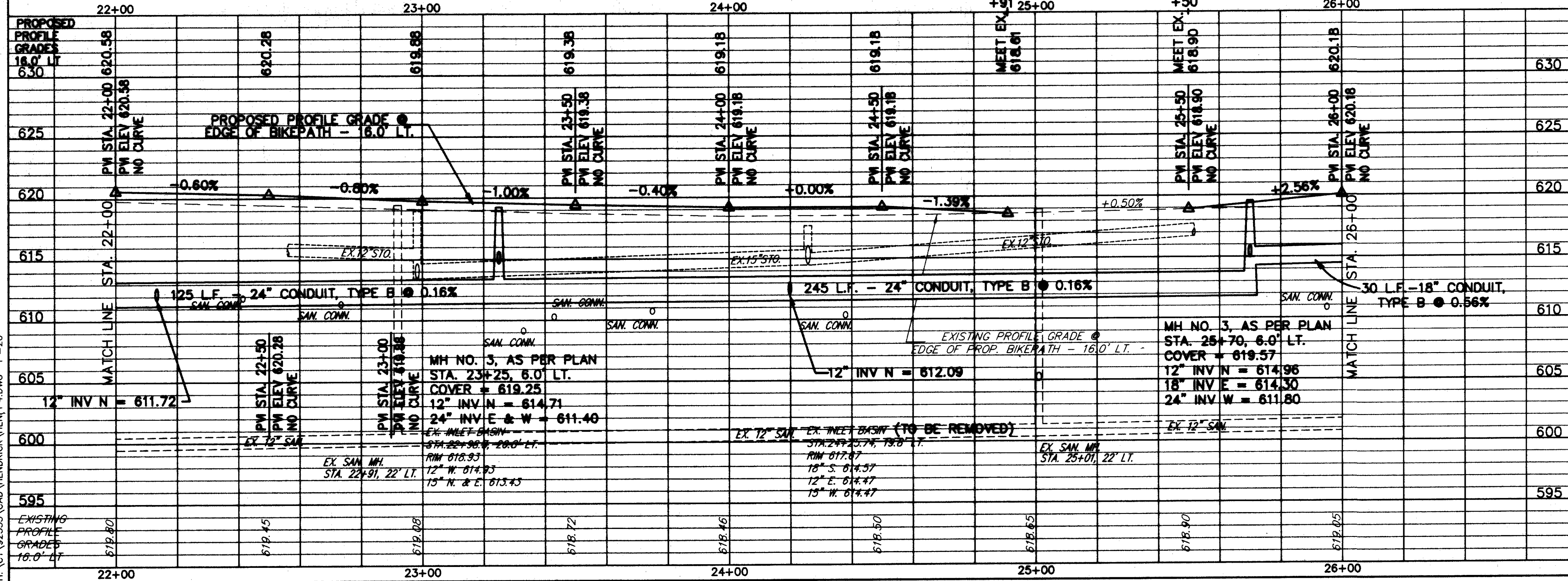
FRED & JOAN LARICUIA VOL. 844, PG. 476



* TRANSITION TYPE 6 CURB TO ROLL CURB

FOR TYPICAL SECTIONS SEE SHEET 13
FOR CROSS-SECTIONS SEE SHEETS 149 THRU 165
FOR DRIVEWAY SCHEDULE & DETAILS SEE SHEET 24
FOR DRIVEWAY PROFILES SEE SHEET 166
FOR PAVEMENT DETAILS SEE SHEET 171
FOR TRAFFIC CONTROL DETAILS SEE SHEETS 172 THRU 198
FOR MAINTENANCE OF TRAFFIC DETAILS SEE SHEETS 17 & 18

ITEM	DESCRIPTION	UNIT	AMOUNT
830	CURB, TYPE 6	LN.FT.	340
448	1-1/4" ASPH. CONC. SURFACE COURSE, TYPE 1, PG84-22	CU.YD.	33.0
448	1-3/4" ASPH. CONC. INTERMEDIATE COURSE, TYPE 2, PG84-22	CU.YD.	46.2
408	BITUMINOUS PRIME COAT (0.40 GAL./SQ.YD.)	GAL.	381
407	TACK COAT FOR INTERMEDIATE COURSE (0.05 GAL./SQ.YD.)	GAL.	47.7
407	TACK COAT (0.10 GAL./SQ.YD.)	GAL.	58.4
304	6" AGGREGATE BASE, AS PER PLAN	CU.YD.	61.3
304	4" AGGREGATE BASE, AS PER PLAN	CU.YD.	81.3
301	6" BITUMINOUS AGGREGATE BASE, PG84-22	CU.YD.	87.3
203	SUBGRADE COMPACTION	SQ.YD.	862
	SOIL STERILANT	SQ.YD.	862
TOTALS			340



REF	LOCATION	LN.FT.	LN.FT.
R-1	STA. 22+00 TO STA. 22+14, LT.	25	
R-2	STA. 22+36 TO STA. 22+90, LT.	54	
R-3	STA. 25+44 TO STA. 25+52, LT.	8	
TOTALS		8	79

REF	LOCATION	LN.FT.	LN.FT.	EACH	EACH	EACH	EACH	EACH
D-1	STA. 22+13, 6' LT. TO 28.5' LT.	22.5		1				
D-2	STA. 22+00 TO STA. 23+25, 6' LT.		125	1				
D-3	STA. 22+98.3, 26.6' LT.				245	1		
D-4	STA. 23+25, 6' LT. TO 13' LT.	7					1	
D-5	STA. 23+25 TO STA. 25+70, 6' LT.							1
D-6	STA. 24+20, 6' LT. TO 13' LT.	7						1
D-7	STA. 24+25, 28.5' LT. TO STA. 24+25.7, 18.0' LT.	24.5			1	1		
D-8	STA. 25+70, 6' LT. TO 13' LT.	7						1
D-9	STA. 25+70 TO STA. 26+00, 6' LT.		30					
S-1	STA. 22+91, 22' LT.							1
TOTALS		68	340	2	2	1	3	1

HENDRICKS ROAD PLAN & PROFILE STA. 22+00 TO STA. 26+00