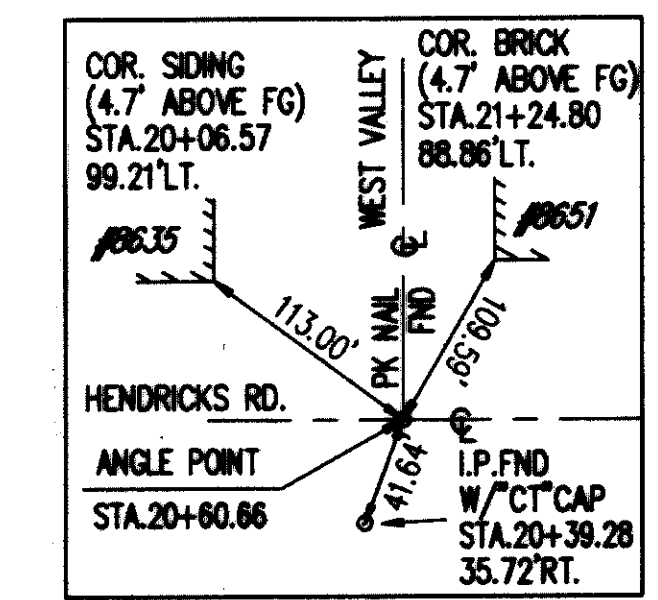


BENCH MARK #2
SOUTHWEST CORNER 8"x3.9'
CONC. HEADWALL ON WEST SIDE
OF DRIVEWAY TO HSE #8616
ELEV. = 619.80

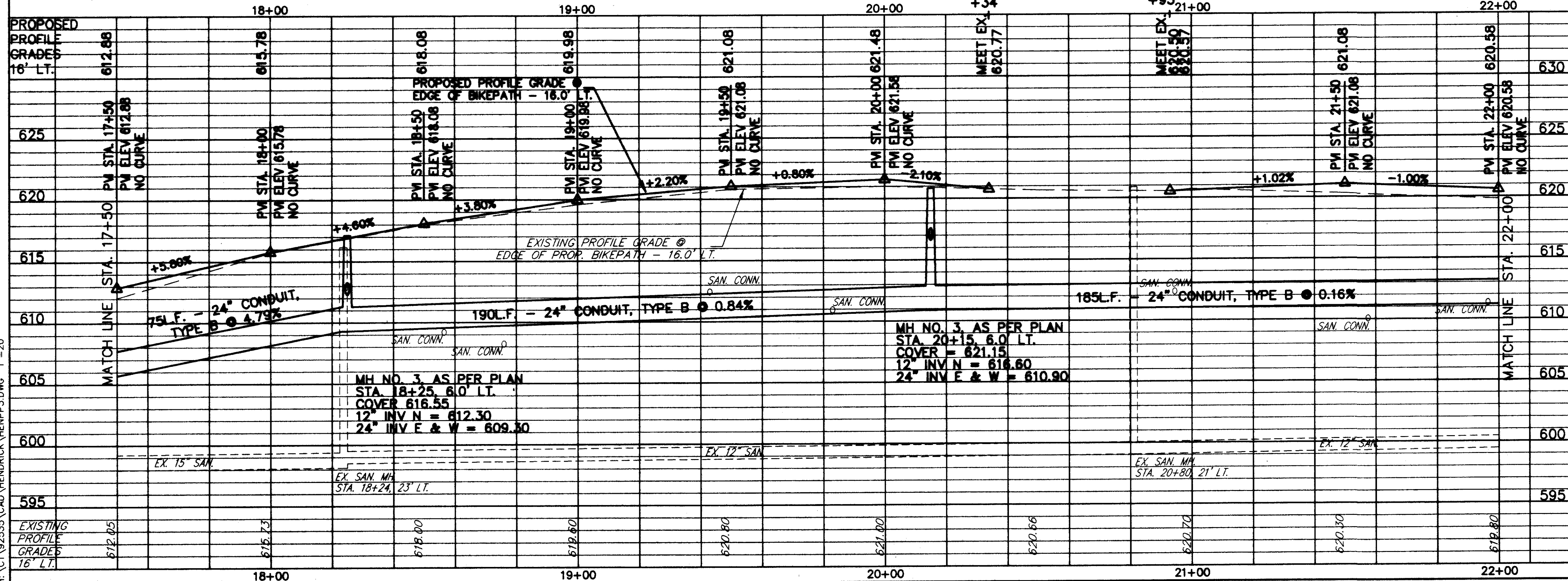


EXISTING CONCRETE PAVEMENT TO BE REMOVED. A QUANTITY HAS BEEN PROVIDED FOR FULL DEPTH PAVEMENT SAWING IN THE PAVEMENT QUANTITY TABLE

FOR TYPICAL SECTIONS SEE SHEET 13
FOR CROSS-SECTIONS SEE SHEETS 149 THRU 165
FOR DRIVEWAY SCHEDULE & DETAILS SEE SHEET 24
FOR DRIVEWAY PROFILES SEE SHEET 166
FOR PAVEMENT DETAILS SEE SHEET 171
FOR TRAFFIC CONTROL DETAILS SEE SHEETS 172 THRU 198
FOR MAINTENANCE OF TRAFFIC DETAILS SEE SHEETS 17 & 18

ITEM	DESCRIPTION	UNIT	QUANTITY	UNIT PRICE	TOTAL
830	CURB, TYPE 6	LN.FT.	107.0	71.3	7626.1
448	1-1/4" ASPH. CONC. SURFACE COURSE TYPE 1, PG84-22	SQ.YD.	31.2	22.3	695.8
448	1-3/4" ASPH. CONC. INTERMEDIATE COURSE TYPE 2, PG84-22	SQ.YD.	16.3	11.7	190.6
408	BITUMINOUS PRIME COAT (0.40 GAL./SQ.YD.)	GAL.	154	4.3	661.2
407	TACK COAT FOR INTERMEDIATE COURSE (0.05 GAL./SQ.YD.)	GAL.	16.8	6.2	105.1
407	TACK COAT (0.10 GAL./SQ.YD.)	GAL.	32.1	20.7	664.2
304	6" AGGREGATE BASE, AS PER PLAN	SQ.YD.	55.9	20.7	1157.1
304	4" AGGREGATE BASE, AS PER PLAN	SQ.YD.	71.3	20.7	1476.8
301	6" BITUMINOUS AGGREGATE BASE, PG84-22	SQ.YD.	107.0	71.3	7626.1
255	FULL DEPTH PAVEMENT SAW CUT	LN.FT.	8	1102.0	8816.0
203	SUBGRADE COMPACTION	LN.FT.	124	3.7	458.8
202	SOIL STERILANT	LN.FT.	124	3.7	458.8
202	PAVEMENT REMOVED	LN.FT.	460	3.7	1702.0
TOTALS					55100.0

REF	LOCATION	LN.FT.	EACH	LN.FT.	SQ.FT.
P-1	STA. 17+50 TO 22+00, LT. = 5777 S.F.	24	1	24	24
P-2	STA. 17+50 TO 20+34, LT. = 3021 S.F.	24	1	24	24
P-3	STA. 20+34 TO 22+00, LT. = 1120 S.F.	8	1	8	8
P-4	STA. 17+50 TO 20+28.47, LT.	24	1	24	24
P-5	STA. 20+28.47 TO 22+00, LT.	8	1	8	8
TOTALS					88



REF	LOCATION	LN.FT.	EACH	LN.FT.	SQ.FT.
R-1	STA. 17+97 TO STA. 18+10, LT.	16			
R-2	STA. 18+33 TO STA. 18+57, LT.	24	1		
R-3	STA. 20+34 TO STA. 20+38, LT.			20	
R-4	STA. 20+86 TO STA. 20+90, LT.			24	
R-5	STA. 21+15 TO STA. 21+26, LT.			22	
R-6	STA. 21+24 TO STA. 21+44, LT.	20			
R-7	STA. 21+42 TO STA. 21+54, LT.			22	
R-8	STA. 21+90 TO STA. 21+98, LT.	8			
R-9	STA. 21+92 TO STA. 22+00, LT.			8	
TOTALS					68

REF	LOCATION	LN.FT.	LN.FT.	EACH	EACH	EACH			
D-1	STA. 17+50 TO STA. 18+25, 6' LT.	7	75	1					
D-2	STA. 18+25, 6' LT. TO 13' LT.	7	190	1	1				
D-3	STA. 18+25 TO STA. 20+15, 6' LT.	7			1				
D-4	STA. 20+15, 6' LT. TO 13' LT.	7			1				
D-5	STA. 20+15 TO STA. 22+00, 6' LT.	7	185						
S-1	STA. 18+24, 23' LT.					1			
TOTALS					14	450	2	2	1

HENDRICKS ROAD PLAN & PROFILE STA. 17+50 TO STA. 22+00