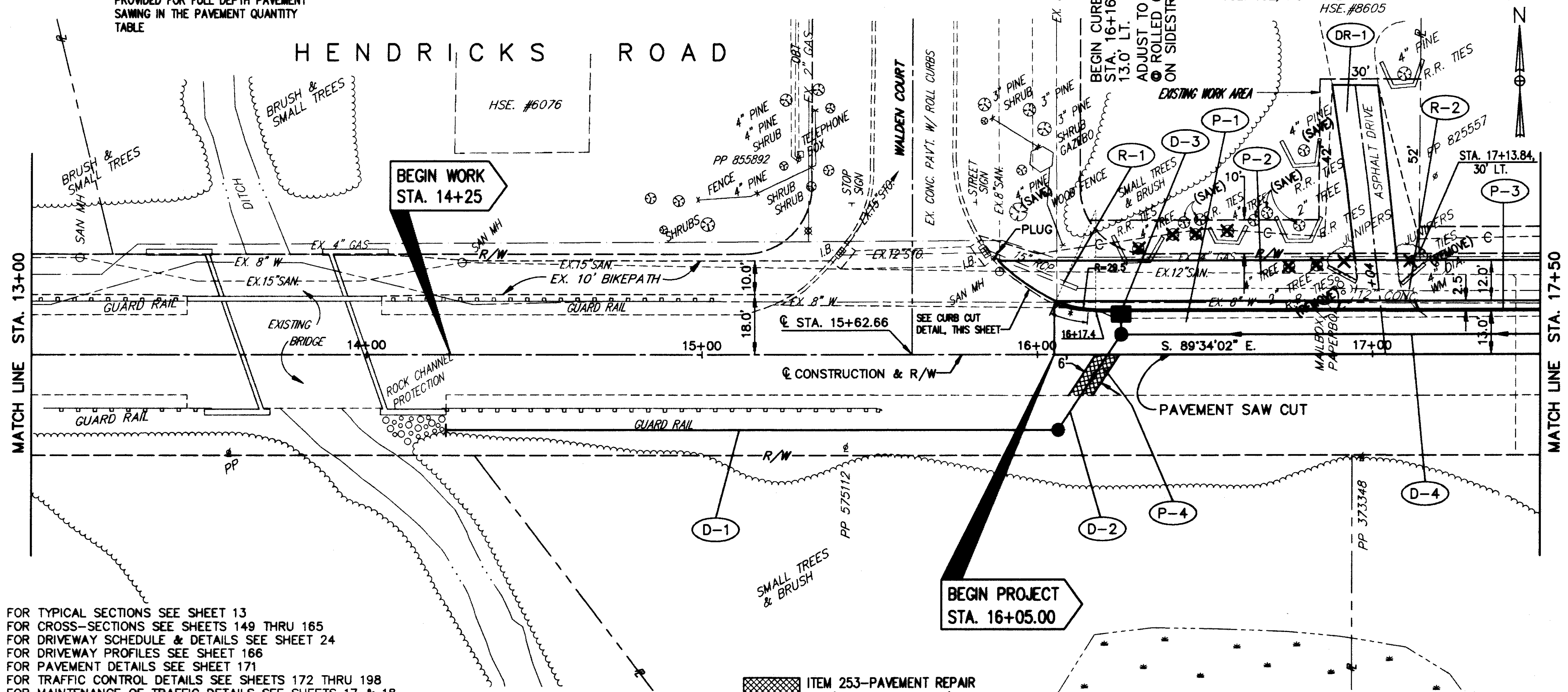


EXISTING CONCRETE PAVEMENT TO BE REMOVED. A QUANTITY HAS BEEN PROVIDED FOR FULL DEPTH PAVEMENT SAWING IN THE PAVEMENT QUANTITY TABLE

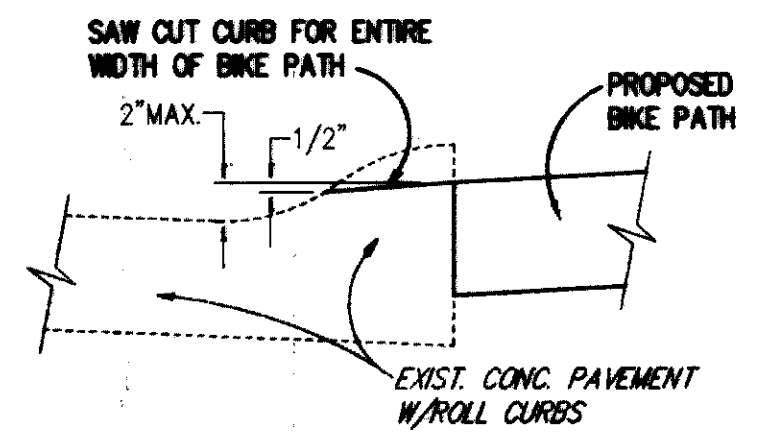
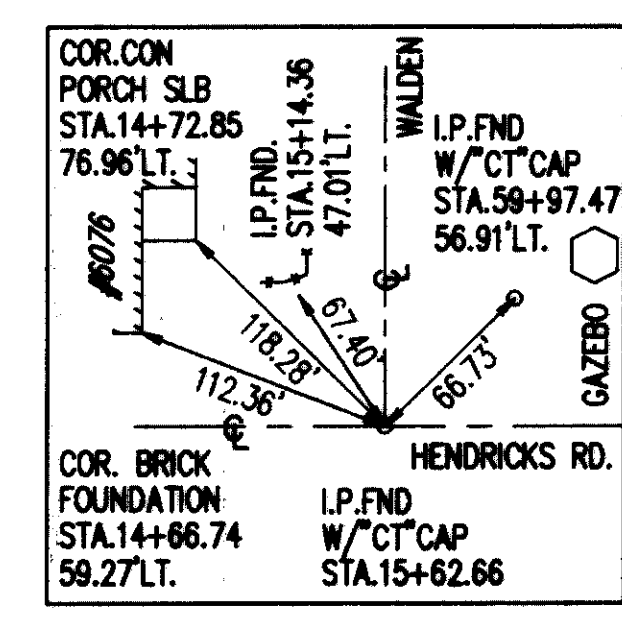
* TRANSITION FROM ROLL CURB TO TYPE 6 CURB IN 10'-0"



FOR TYPICAL SECTIONS SEE SHEET 13
FOR CROSS-SECTIONS SEE SHEETS 149 THRU 165
FOR DRIVEWAY SCHEDULE & DETAILS SEE SHEET 24
FOR DRIVEWAY PROFILES SEE SHEET 166
FOR PAVEMENT DETAILS SEE SHEET 171
FOR TRAFFIC CONTROL DETAILS SEE SHEETS 172 THRU 198
FOR MAINTENANCE OF TRAFFIC DETAILS SEE SHEETS 17 & 18

ITEM 253-PAVEMENT REPAIR (SEE DETAIL, SHEET)

NOTE: REMOVAL OF EXISTING RAILROAD TIE PLANTERS TO BE INCLUDED UNDER ITEM 203 - EXCAVATION.



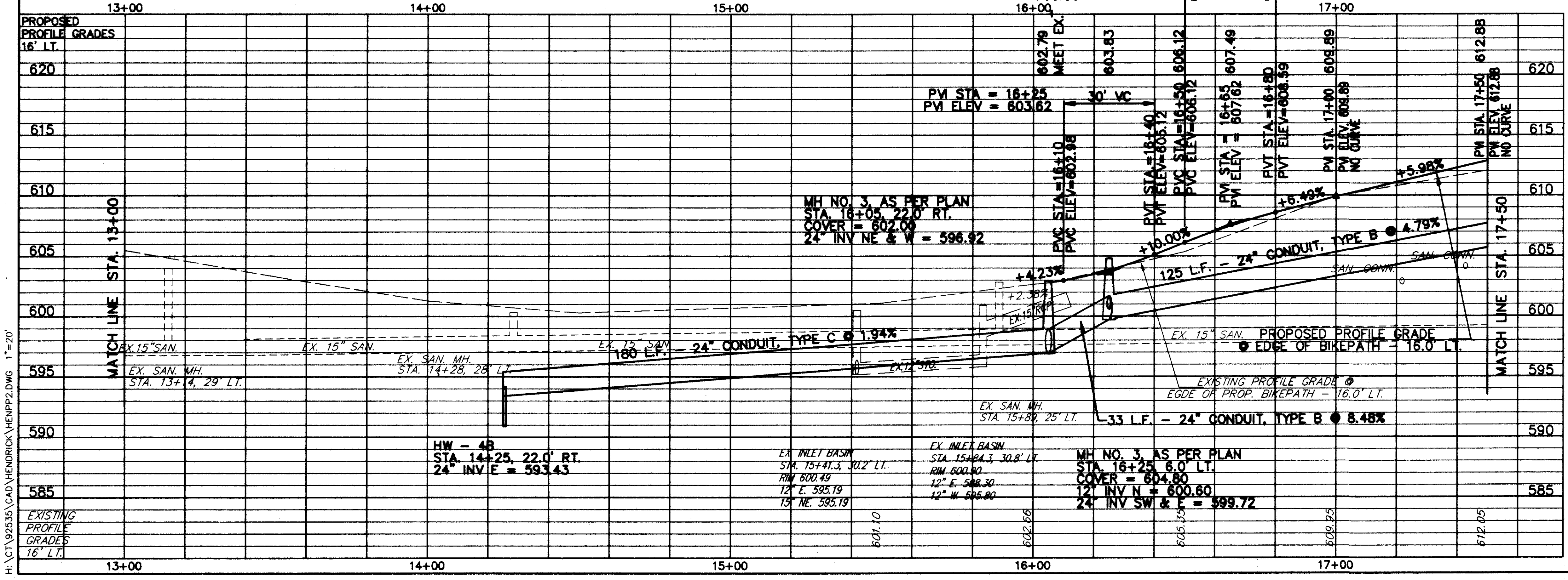
NOTE: TRANSITION SAW CUT TO MEET EXISTING @ 2\"/>

NO.	DESCRIPTION	UNIT	QTY	UNIT PRICE	TOTAL
202	PAVEMENT REMOVED	SO. YD.	208	0.7	145.6
203	SUBGRADE COMPACTION	SO. YD.	208	0.7	145.6
253	PAVEMENT REPAIR	SO. YD.	10	10	100
255	FULL DEPTH PAVEMENT SAW CUT	LN. FT.	2	2	4
301	6\"/>				

REF	LOCATION	LN. FT.	TOTALS
P-1	STA. 16+05.5 TO 17+50, LT. = 1893 SF.		
P-2	STA. 16+05.5 TO 17+50, LT. = 1850 SF.		
P-3	STA. 16+05.5 TO 17+50, LT. = 1850 SF.		
P-4	STA. 16+05.4 TO 16+24.6, RT.		
TOTALS			145

REF	LOCATION	LN. FT.	TOTALS
R-1	STA. 15+88 TO STA. 16+12, LT.	26	
R-2	STA. 16+94 TO STA. 17+12, LT.	18	
TOTALS			44

REF	LOCATION	CL. YD.	LN. FT.	LN. FT.	EACH	TOTALS
D-1	STA. 14+25 TO STA. 16+05, 22' RT.	0.31		180	1	
D-2	STA. 16+05, 22' RT. TO STA. 16+25, 6' LT.		7	33	1	
D-3	STA. 16+25, 6' LT. TO 13' LT.			125	1	
D-4	STA. 16+25 TO STA. 17+50, 6' LT.					
TOTALS		0.31	7	158	2	1



HENDRICKS ROAD PLAN & PROFILE STA. 13+00 TO STA. 17+50