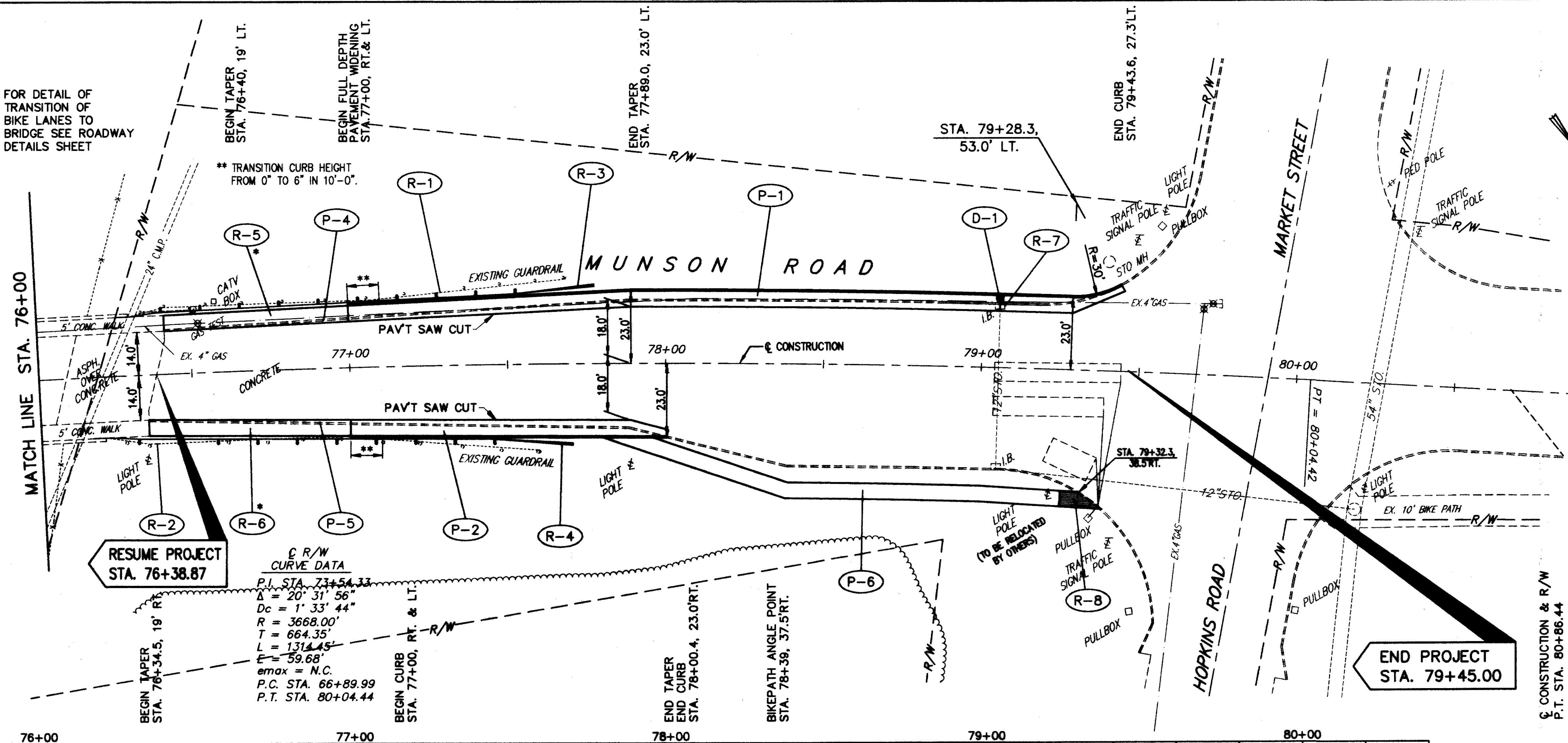


* FOR DETAIL OF TRANSITION OF BIKE LANES TO BRIDGE SEE ROADWAY DETAILS SHEET

** TRANSITION CURB HEIGHT FROM 0" TO 6" IN 10'-0".

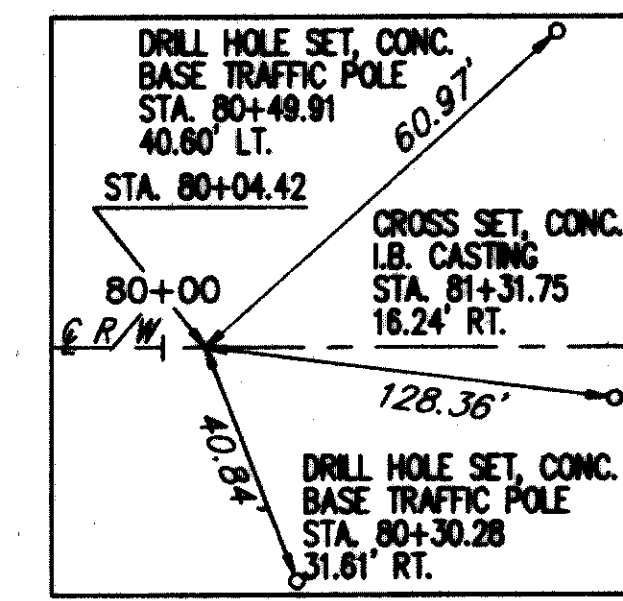


RESUME PROJECT STA. 76+38.87

RESUME PROJECT CURVE DATA
 P.I. STA. 73+54.33
 $\Delta = 20^\circ 31' 56''$
 $D_c = 1' 33' 44''$
 $R = 3668.00'$
 $T = 864.35'$
 $L = 1314.45'$
 $E = 59.68'$
 $e_{max} = N.C.$
 P.C. STA. 66+89.99
 P.T. STA. 80+04.44

BENCH MARK #11
 DHOLE REF. CONC. BASE TIGHT
 NW COR MUNSON/MARKET
 STA. 80+50± LT.
 ELEV. 633.62

BM11



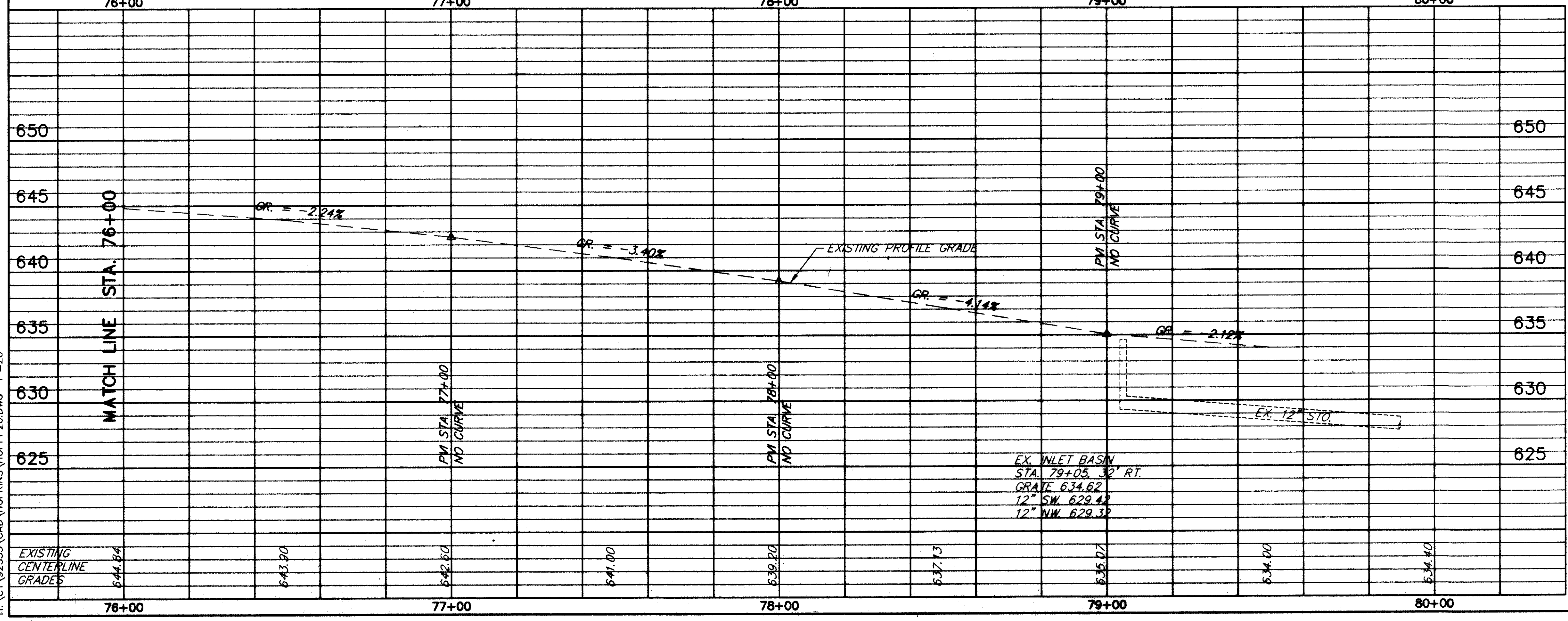
RESURFACING PROGRAM	QTY	UNIT	AMOUNT	PRICE	TOTAL
1-1/4" ASPH. CONC. SURFACE COURSE TYPE 1, PG64-22	448	SQ. YD.	248	1.0	248
1/2" ANG. ASPH. CONC. INTERMEDIATE COURSE TYPE 2, PG64-22	448	SQ. YD.	248	1.0	248
TACK COAT (0.10 GAL./SQ. YD.)	407	GAL.	76	7.7	76
PAVEMENT PLANNING BITUMINOUS	254	SQ. YD.	76	7.7	76
CURB, TYPE 2-A	830	LINEAL FT.	248	100	346
10" PLAIN CONCRETE PAVEMENT	452	SQ. YD.	146.2	59.4	100
1-1/4" ASPH. CONC. SURFACE COURSE TYPE 1, PG64-22	448	SQ. YD.	248	2.7	248
1-3/4" ASPH. CONC. INTERMEDIATE COURSE TYPE 2, PG64-22	448	SQ. YD.	248	3.8	248
BITUMINOUS PRIME COAT (0.40 GAL./SQ. YD.)	408	GAL.	31.5	3.8	31.5
TACK COAT FOR INTERMEDIATE COURSE (0.05 GAL./SQ. YD.)	407	GAL.	3.9	31.5	3.9
6" AGGREGATE BASE, AS PER PLAN	304	SQ. YD.	13.1	22.8	13.1
4" AGGREGATE BASE, AS PER PLAN	304	SQ. YD.	16.2	6.6	16.2
EXCAVATION NOT INCLUDING EMBANKMENT CONSTRUCTION	203	SQ. YD.	32.6	14.1	18.7
FULL DEPTH PAVEMENT SAW CUT	245	SQ. YD.	25.4	103	18.7
PAVEMENT REMOVED	202	SQ. YD.	62.8	25.4	5.7
SOIL STERILANT	202	SQ. YD.	23.4	5.7	6.8
TOTALS			79	88.5	475

REF	LOCATION	QTY	UNIT	PRICE	TOTAL
R-1	STA. 76+30 TO 77+19, LT.	89	SQ. YD.	1.0	89
R-2	STA. 76+20 TO 77+60, RT.	140	SQ. YD.	1.0	140
R-3	STA. 76+20 TO 77+75, LT.	125	SQ. YD.	1.0	125
R-4	STA. 76+15 TO 77+75, RT.	125	SQ. YD.	1.0	125
R-5	STA. 76+40 TO 77+00, LT.	293	SQ. YD.	1.0	293
R-6	STA. 76+34 TO 77+00, RT.	319	SQ. YD.	1.0	319
R-7	STA. 79+05, LT.	40	SQ. YD.	1.0	40
R-8	STA. 79+32.3, RT.	1	SQ. YD.	1.0	1
TOTALS		1		229	250

FOR TYPICAL SECTIONS SEE SHEETS 9 THRU 12
 FOR CROSS-SECTIONS SEE SHEETS 100 THRU 140
 FOR DRIVEWAY SCHEDULE & DETAILS SEE SHEET 23
 FOR PAVEMENT DETAILS SEE SHEET 171
 FOR TRAFFIC CONTROL DETAILS SEE SHEETS 172 THRU 198

DRAINAGE & SANITARY			
REF	LOCATION	UNITS	EACH
D-1	STA. 79+05, LT.	4	1
TOTALS		4	1

ROADWAY							
REF	LOCATION	EACH	UNITS	UNITS	EACH	EACH	EACH
R-1	STA. 76+30 TO 77+19, LT.						
R-2	STA. 76+20 TO 77+60, RT.						
R-3	STA. 76+20 TO 77+75, LT.						
R-4	STA. 76+15 TO 77+75, RT.						
R-5	STA. 76+40 TO 77+00, LT.						
R-6	STA. 76+34 TO 77+00, RT.						
R-7	STA. 79+05, LT.						
R-8	STA. 79+32.3, RT.						
TOTALS		1	229	250	2	2	612



MUNSON ROAD PLAN & PROFILE STA. 76+00 TO END

H:\CT\92535\CAD\HOPKINS\HOPPP2.DWG 1"=20'