

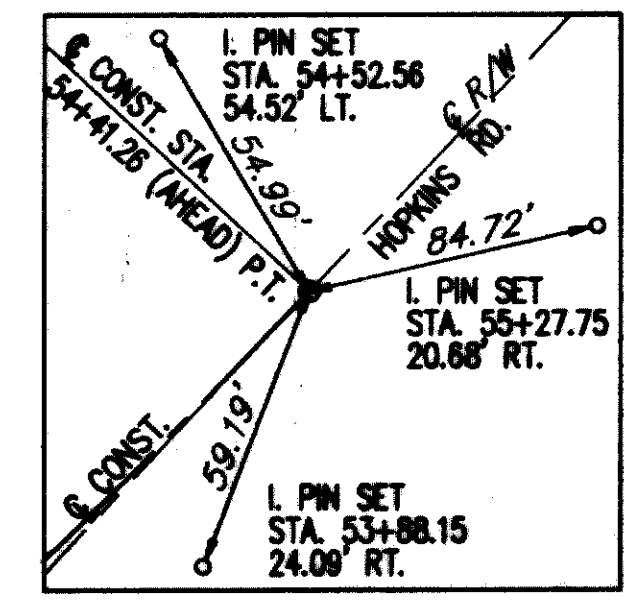
HOPKINS ROAD

THE CLEVELAND ELECTRIC ILLUMINATING COMPANY
VOL. 623, PG. 470

CONSTRUCTION CURVE DATA
 P.I. STA. 52+99.51
 $\Delta = 20^\circ 31' 36''$
 $D_c = 7' 09' 43''$
 $R = 800.00'$
 $T = 144.86'$
 $L = 286.61'$
 $E = 13.01'$
 $e_{max} = N.C.$
 P.C. STA. 51+54.65
 P.T. STA. 54+41.26

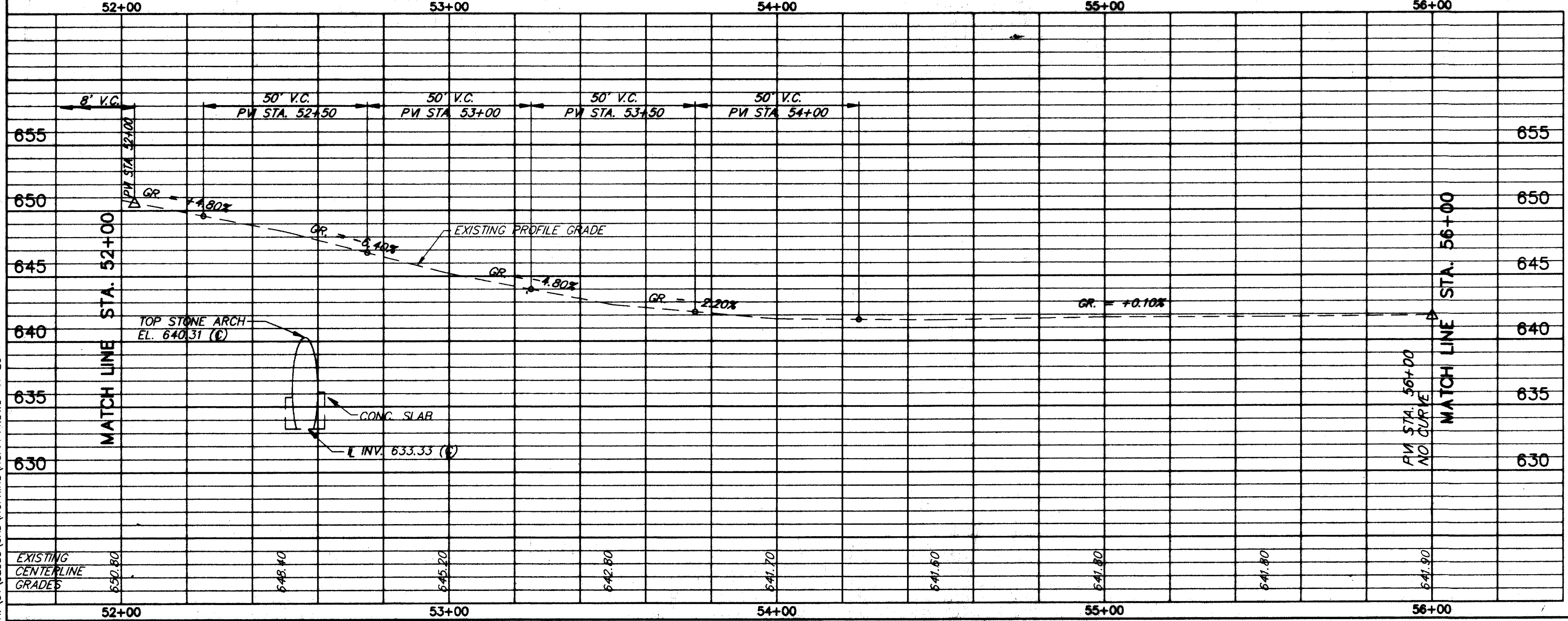
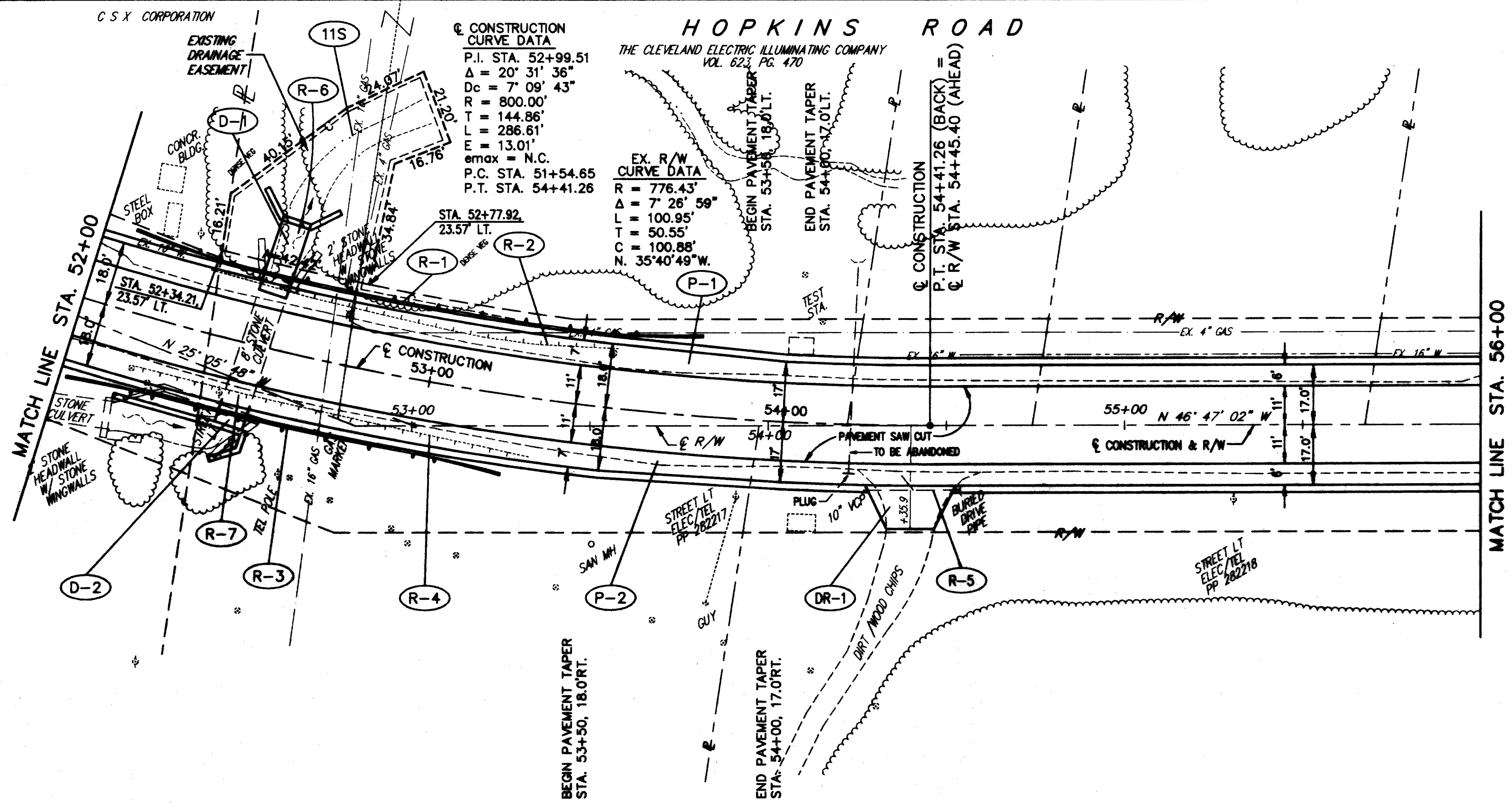
EX. R/W CURVE DATA
 $R = 776.43'$
 $\Delta = 7^\circ 26' 59''$
 $L = 100.95'$
 $T = 50.55'$
 $C = 100.88'$
 $N. 35^\circ 40' 49'' W.$

BENCH MARK #8
 TOP I.PIN REF. 2'S. OF
 PPOLE #282818
 STA. 55+28± RT.
 ELEV. 640.55



ITEM NO.	DESCRIPTION	CU. YDS.	SQ. YDS.	EA.	AMOUNT
448	1-1/4" ASPH. CONC. SURFACE COURSE, TYPE 1, PG84-22	9.9	9.9		19.8
408	BITUMINOUS PRIME COAT (@ 0.40 GAL./SQ.YD.)	114.4	114.4		228.8
407	TACK COAT (@ 0.10 GAL./SQ.YD.)	28.6	28.6		57.2
304	6" AGGREGATE BASE, AS PER PLAN	47.7	47.7		95.4
301	6" BITUMINOUS AGGREGATE BASE, PG84-22	15.1	14.3		29.4
301	3 3/4" BITUMINOUS AGGREGATE BASE, PG84-22	89.5	89.5		179.0
203	SUBGRADE COMPACTION	286	286		572.0
203	EXCAVATION NOT INCLUDING EMBANKMENT CONSTRUCTION	142.3	141.5		283.8
TOTALS					1390.0

FOR TYPICAL SECTIONS SEE SHEETS 9 THRU 12
 FOR CROSS-SECTIONS SEE SHEETS 100 THRU 140
 FOR DRIVEWAY SCHEDULE & DETAILS SEE SHEET 23
 FOR PAVEMENT DETAILS SEE SHEET 171
 FOR TRAFFIC CONTROL DETAILS SEE SHEETS 172 THRU 198



REF	LOCATION	PIPE REMOVED, 24" AND UNDER	GUARDRAIL REMOVED	PIPE REMOVED, OVER 24"	GUARDRAIL TYPE 5, AS PER PLAN	ANCHOR ASSEMBLY, TYPE A, AS PER PLAN
R-1	STA. 52+10 TO STA. 53+75, LT.				112.5	2
R-2	STA. 52+32 TO STA. 53+50, LT.		118			
R-3	STA. 52+00 TO STA. 53+25, RT.				75	2
R-4	STA. 52+18 TO STA. 53+30, RT.		112			
R-5	STA. 54+25 TO STA. 54+50, RT.	25				
R-6	STA. 52+53, LT.			4		
R-7	STA. 52+50, RT.			5		
TOTALS		25	230	9	187.5	4

REF	LOCATION	CONCRETE MASONRY	96" CONDUIT, TYPE A, 706.02, AS PER PLAN
D-1	STA. 52+53.3, LT.	28	22
D-2	STA. 52+50, RT.	38	9
TOTALS		64	31

HOPKINS ROAD PLAN & PROFILE STA. 52+00 TO STA. 56+00