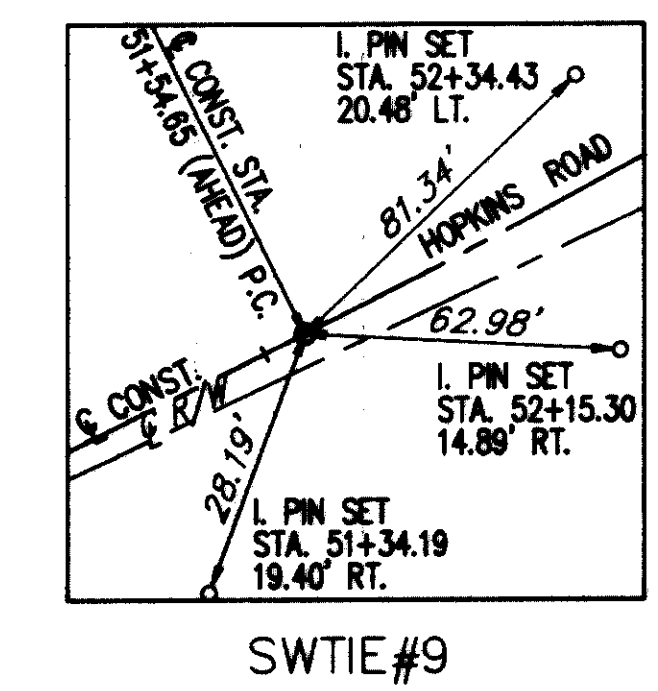
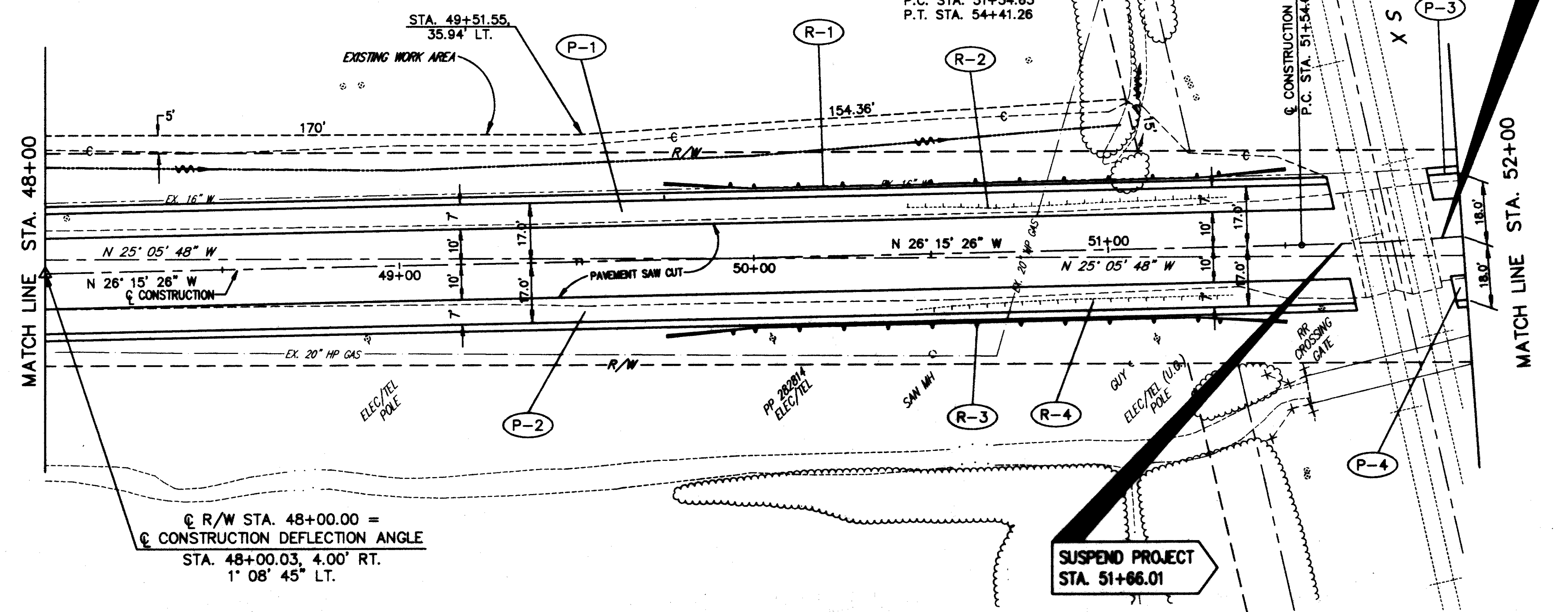


CONSTRUCTION CURVE DATA
 P.I. STA. 52+99.51
 $\Delta = 20' 31' 36''$
 $D_c = 7' 09' 45''$
 $R = 800.00'$
 $T = 144.86'$
 $L = 286.61'$
 $E = 13.01'$
 $e_{max} = N.C.$
 P.C. STA. 51+54.65
 P.T. STA. 54+41.26

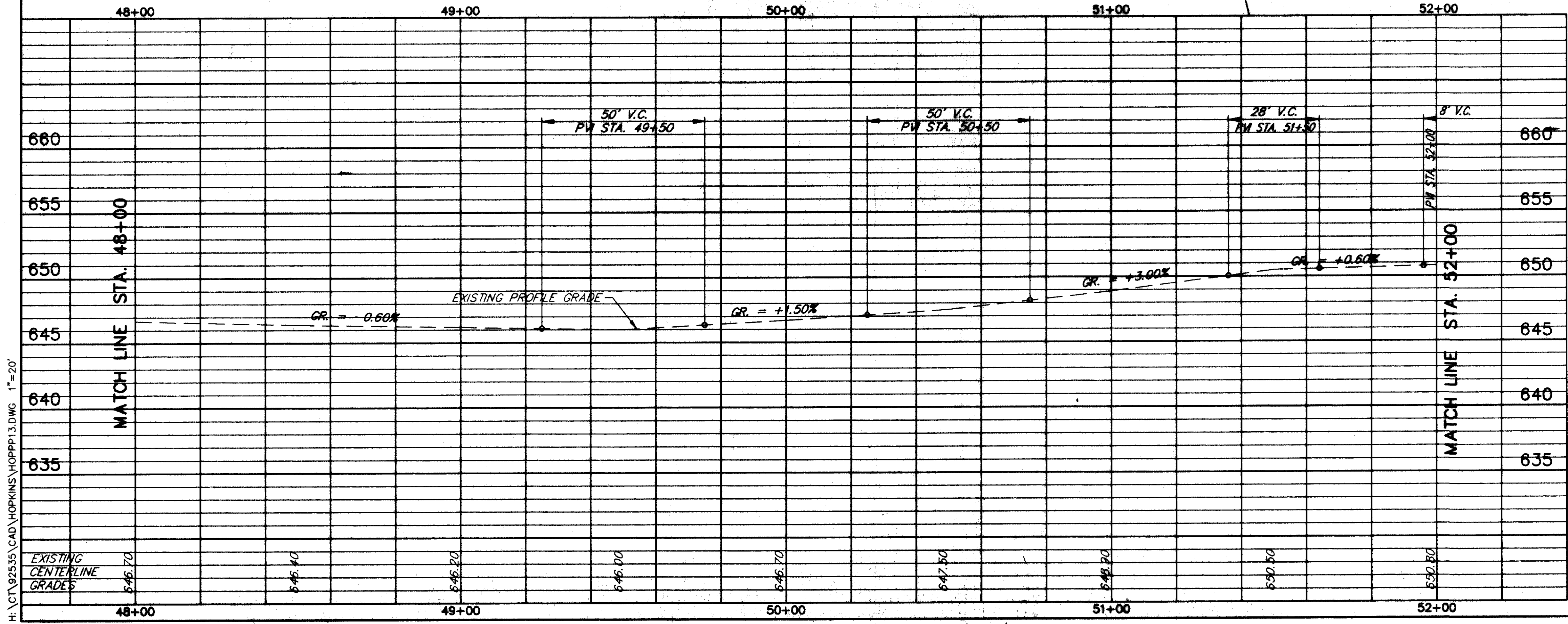
BOB LEASING, LTD.
 VOL. 1738, PG. 998

HOPKINS ROAD



ITEM NO.	DESCRIPTION	UNIT	AMOUNT	TOTAL
448	1-1/4" ASPH. CONC. SURFACE COURSE, TYPE 1, PG84-22	CU.YD.	10.0	20.4
408	BITUMINOUS PRIME COAT (0.40 GAL./SQ.YD.)	GAL.	114.0	231.8
407	TACK COAT (0.10 GAL./SQ.YD.)	GAL.	28.5	58.6
304	6" AGGREGATE BASE, AS PER PLAN	CU.YD.	48.3	98.6
301	6" BITUMINOUS AGGREGATE BASE, PG84-22	CU.YD.	13.9	28.4
301	8 3/4" BITUMINOUS AGGREGATE BASE, PG84-22	CU.YD.	7.3	14.8
203	SUBGRADE COMPACTION	SQ.YD.	283	580.2
203	EXCAVATION NOT INCLUDING EMBANKMENT CONSTRUCTION	SQ.YD.	142.2	289.2
TOTALS			289.2	289.2

FOR TYPICAL SECTIONS SEE SHEETS 9 THRU 12
 FOR CROSS-SECTIONS SEE SHEETS 100 THRU 140
 FOR DRIVEWAY SCHEDULE & DETAILS SEE SHEET 23
 FOR PAVEMENT DETAILS SEE SHEET 171
 FOR TRAFFIC CONTROL DETAILS SEE SHEETS 172 THRU 198



ROADWAY		GUARDRAIL REMOVED	GUARDRAIL TYPE 5, AS PER PLAN	ANCHOR ASSEMBLY, TYPE A, AS PER PLAN
REF	LOCATION	LN.FT.	LN.FT.	EACH
R-1	STA. 49+75 TO STA. 51+50, LT.		125	1
R-2	STA. 50+43 TO STA. 51+34, LT.	91		
R-3	STA. 49+75 TO STA. 51+50, RT.		125	2
R-4	STA. 50+43 TO STA. 51+34, RT.	91		
TOTALS		182	250	3

HOPKINS ROAD PLAN & PROFILE STA. 48+00 TO STA. 52+00

H:\CT\92535\CAD\HOPKINS\HOPPP13.DWG 1"=20'