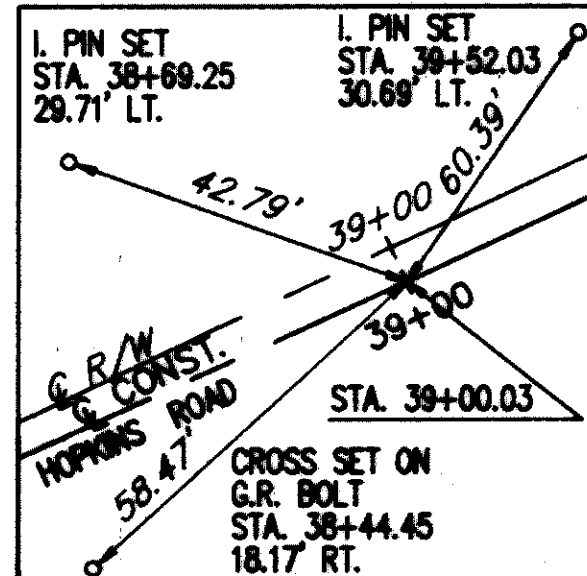
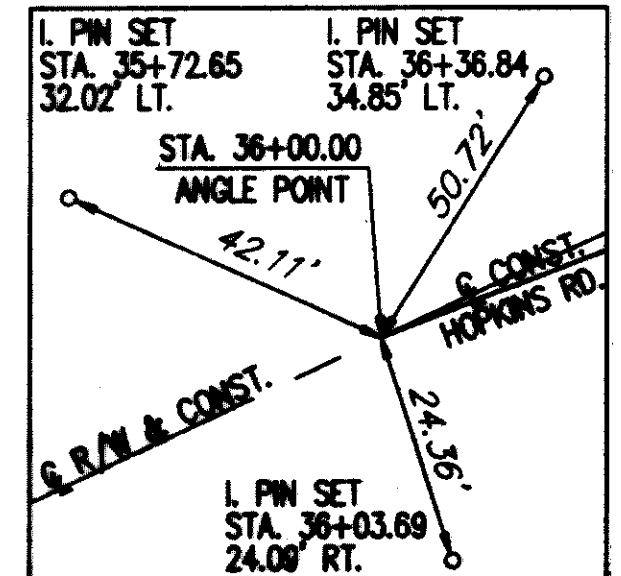
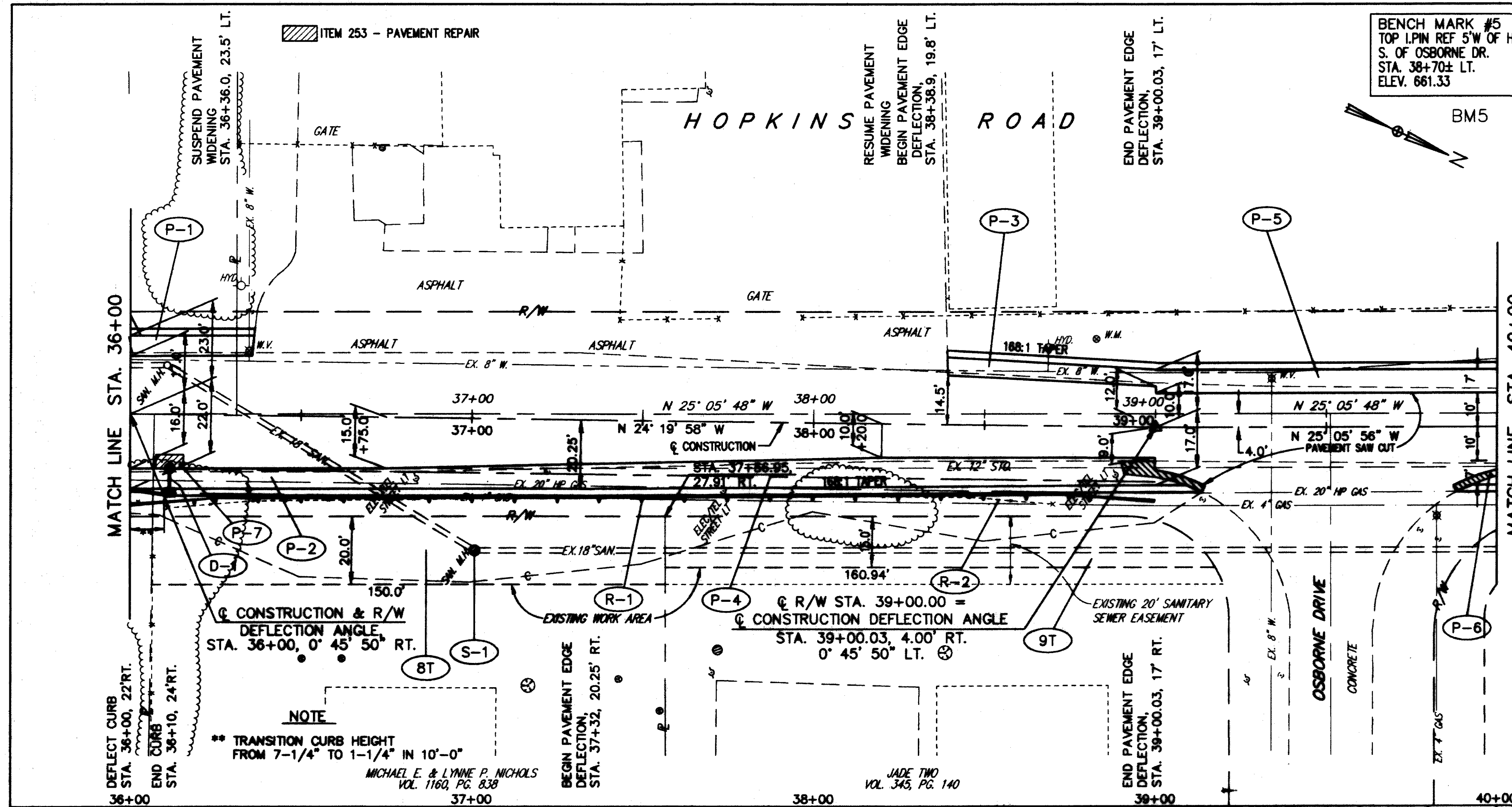
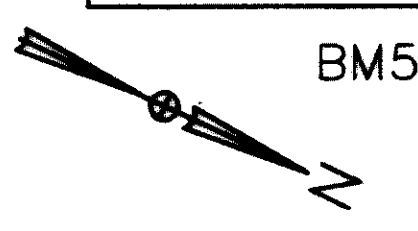


CALC. BY: *WLB*
DATE: *7-99*
CHKD BY: *Colt*
DATE: *8/99*

BENCH MARK #5
TOP I.PIN REF 5' W OF HYD.
S. OF OSBORNE DR.
STA. 38+70± LT.
ELEV. 661.33

BENCH MARK #6
N.RIM MON BOX
OSBORNE DRIVE
STA. 39+45± RT.
ELEV. 657.07

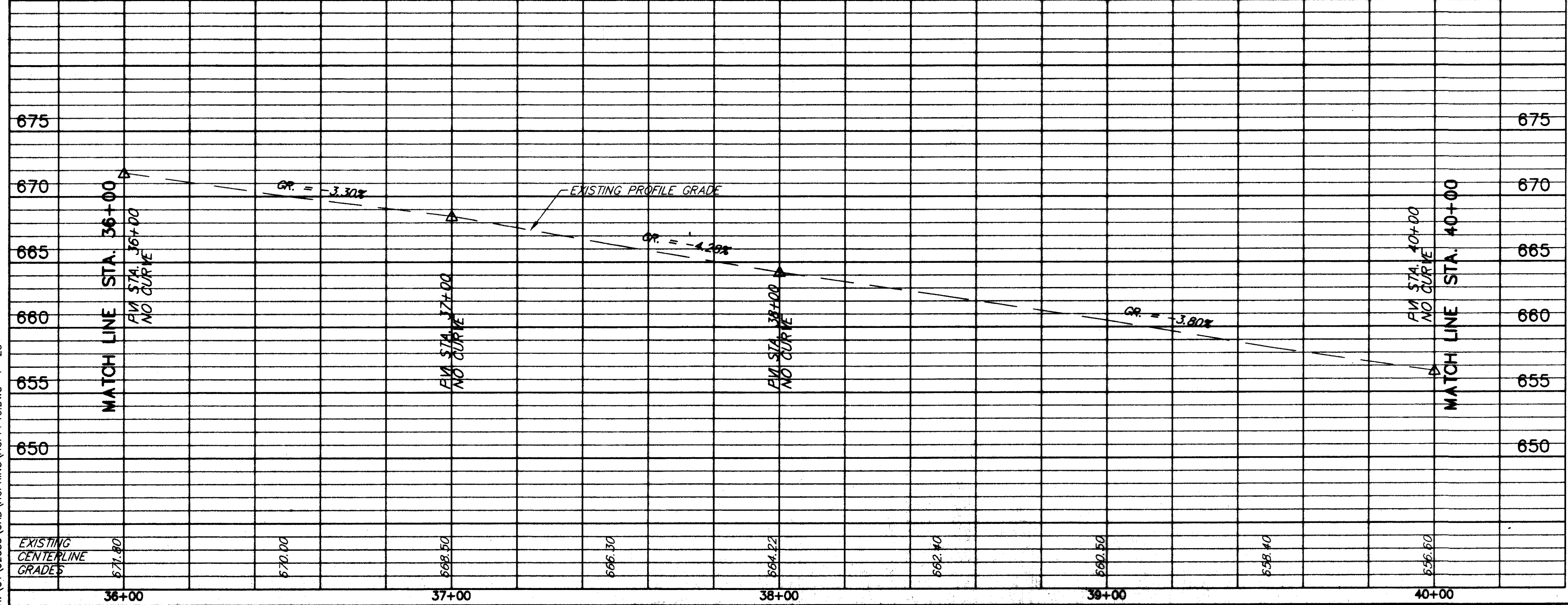


EXISTING CONCRETE PAVEMENT TO BE REMOVED. A QUANTITY HAS BEEN PROVIDED FOR FULL DEPTH PAVEMENT SAWING IN PAVEMENT QUANTITY TABLE.

FOR TYPICAL SECTIONS SEE SHEETS 9 THRU 12
FOR CROSS-SECTIONS SEE SHEETS 100 THRU 140
FOR DRIVEWAY SCHEDULE & DETAILS SEE SHEET 23
FOR PAVEMENT DETAILS SEE SHEET 171
FOR TRAFFIC CONTROL DETAILS SEE SHEETS 172 THRU 198

ITEM	DESCRIPTION	UNIT	QUANTITY
830	CURB, TYPE 6, AS PER PLAN	LN.FT.	10
448	1-1/4\" ASPH. CONC. SURFACE COURSE, TYPE 1, PG&A-22	SQ.YD.	3.1
408	BITUMINOUS PRIME COAT (0.40 GAL./SQ.YD.)	GA.	35.2
407	TACK COAT (0.10 GAL./SQ.YD.)	GA.	3.3
304	6\" AGGREGATE BASE, AS PER PLAN	CU.YD.	10.3
303	6\" BITUMINOUS AGGREGATE BASE, PG&A-22	CU.YD.	3.3
301	8 3/4\" BITUMINOUS AGGREGATE BASE, PG&A-22	CU.YD.	5.5
255	FULL DEPTH PAVEMENT SAW CUT	LN.FT.	2.7
253	PAVEMENT REPAIR	SQ.YD.	1.6
203	SUBGRADE COMPACTION	SQ.YD.	0.4
202	PAVEMENT REMOVED	SQ.YD.	4.4
		TOTALS	109.1

REF	LOCATION	GUARDRAIL REMOVED	GUARDRAIL TYPE 5, AS PER PLAN	ANCHOR ASSEMBLY, TYPE A, AS PER PLAN
P-1	STA. 36+00 TO 37+32, LT. = 792 S.F.			
P-2	STA. 36+00 TO 37+32, RT. = 650 S.F.			
P-3	STA. 37+32 TO 38+00, LT. = 624 S.F.			
P-4	STA. 37+32 TO 38+15, RT. = 1397 S.F.			
P-5	STA. 38+00 TO 40+00, LT. = 700 S.F.			
P-6	STA. 38+00 TO 40+00, RT. = 35 S.F.			
P-7	STA. 38+07.5 TO 38+15.5, RT.			
		TOTALS	109.1	20.6



ROADWAY				
REF	LOCATION	LN.FT.	LN.FT.	EACH
R-1	STA. 36+00 TO STA. 39+00, RT.		250	2
R-2	STA. 36+20 TO STA. 38+70, RT.		250	
TOTALS		250	250	2

DRAINAGE & SANITARY				
REF	LOCATION	LN.FT.	EACH	EACH
D-1	STA. 36+11.5, 16' RT. TO 23' RT.	7	1	1
S-1	STA. 37+00, 38' RT.			1
TOTALS		7	1	1

H:\CT\92535\CAD\HOPKINS\HOPKIN.DWG 1"=20'

HOPKINS ROAD PLAN & PROFILE STA. 36+00 TO STA. 40+00