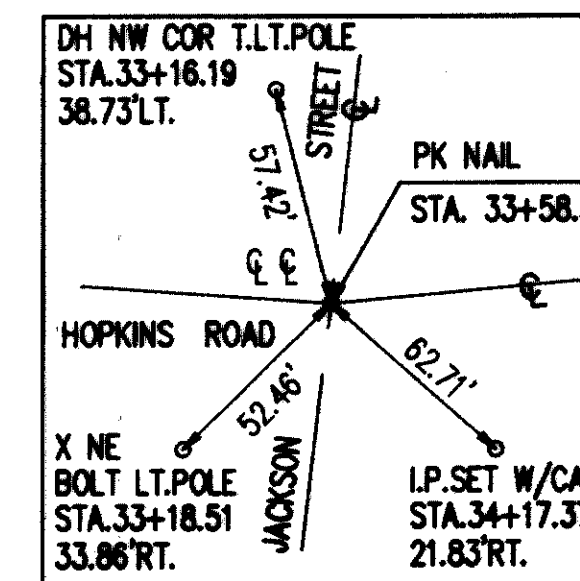
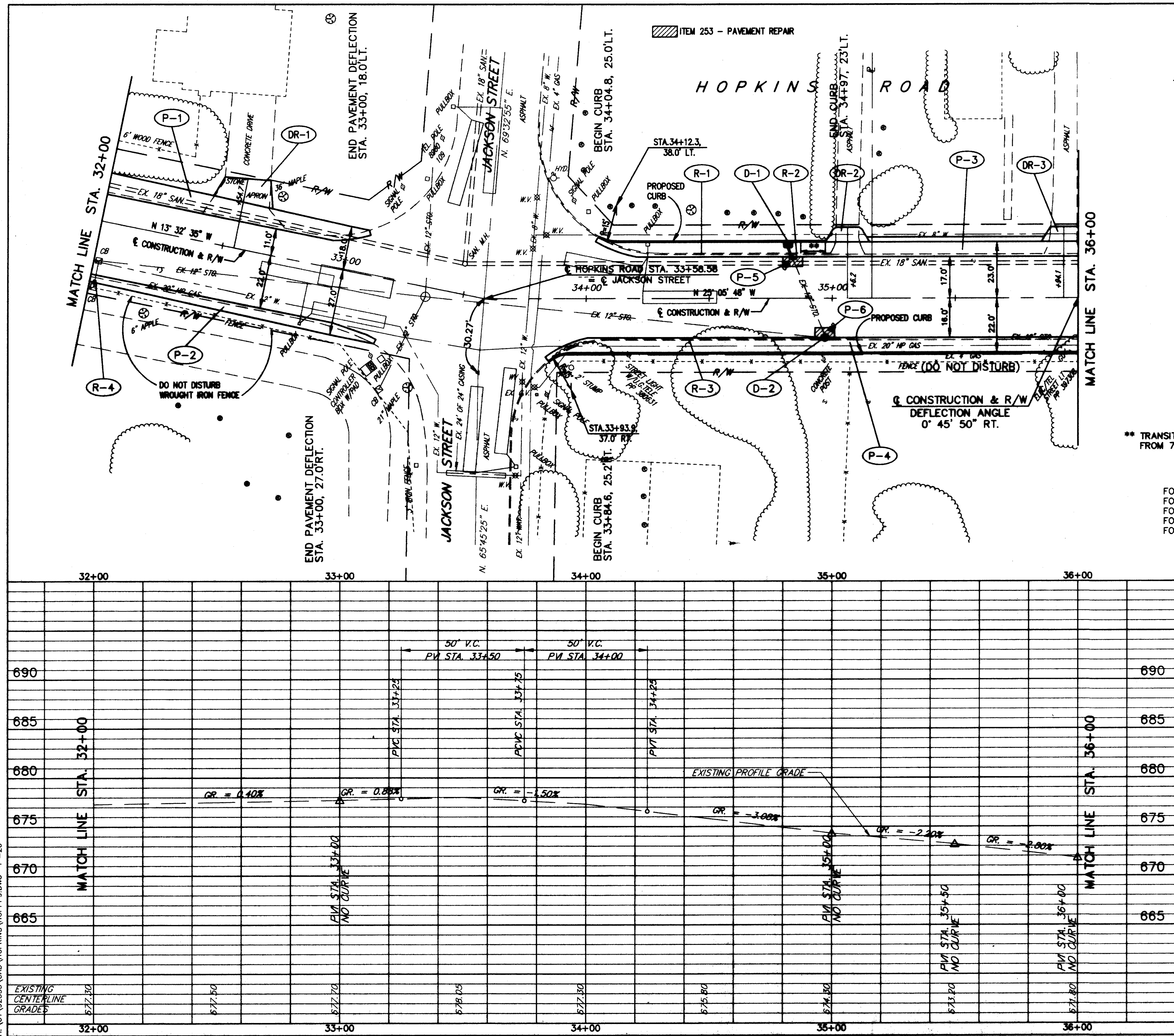
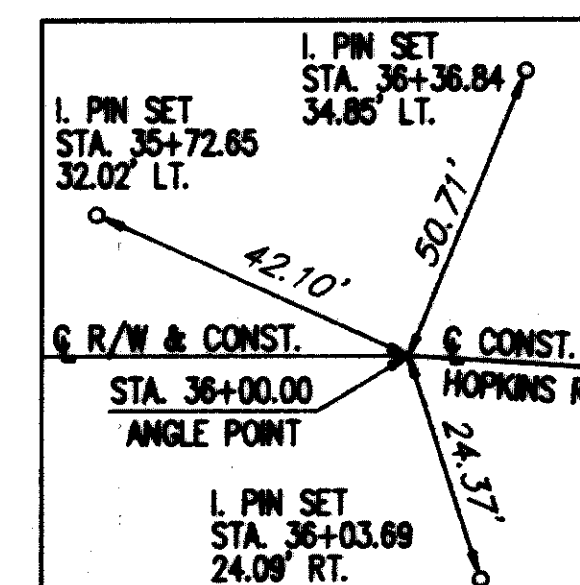


H:\CT\92535\CAD\HOPKINS\HOPPP9.DWG 1"=20'



SWTIE #5



SWTIE #6

** TRANSITION CURB HEIGHT
FROM 7-1/4" TO 1-1/4" IN 10'-0"

FOR TYPICAL SECTIONS SEE SHEETS 9 THRU 12
FOR CROSS-SECTIONS SEE SHEETS 100 THRU 140
FOR DRIVEWAY SCHEDULE & DETAILS SEE SHEET 23
FOR PAVEMENT DETAILS SEE SHEET 171
FOR TRAFFIC CONTROL DETAILS SEE SHEETS 172 THRU 198

ITEM	DESCRIPTION	UNIT	QUANTITY
830	CURB, TYPE B, AS PER PLAN	LINEAL FT.	308
448	1-1/4" ASPH. CONC. SURFACE COURSE, TYPE 1, P684-22	SQ. YD.	14.5
408	BITUMINOUS PRIME COAT (0.40 GAL./SQ.YD.)	GAL.	164.8
407	TACK COAT (0.10 GAL./SQ.YD.)	GAL.	41.2
304	6" AGGREGATE BASE, AS PER PLAN	SQ. YD.	70.1
301	6" BITUMINOUS AGGREGATE BASE, P684-22	SQ. YD.	14.3
301	8 3/4" BITUMINOUS AGGREGATE BASE, P684-22	SQ. YD.	103.1
253	PAVEMENT REPAIR	SQ. YD.	4.0
203	SUBGRADE COMPACTION	SQ. YD.	412
203	EXCAVATION NOT INCLUDING EMBANKMENT CONSTRUCTION	SQ. YD.	199.8
TOTALS			199.8

REF	LOCATION	PAVEMENT
P-1	STA. 32+00 TO 33+13.11 = 113.11 LF	PAVEMENT
P-2	STA. 33+13.11 TO 34+00 = 86.89 LF	PAVEMENT
P-3	STA. 34+00 TO 34+97.17 = 97.17 LF	PAVEMENT
P-4	STA. 34+97.17 TO 35+00 = 2.83 LF	PAVEMENT
P-5	STA. 35+00 TO 36+00 = 100 LF	PAVEMENT
P-6	STA. 36+00 TO 36+00 = 0 LF	PAVEMENT
TOTALS		308

ROADWAY		202	202
REF	LOCATION	EACH	LINEAL FT.
R-1	STA. 34+04.8 TO STA. 35+00 LT.	1	95
R-2	STA. 34+91, 171 LT.	1	95
R-3	STA. 33+84.6 TO STA. 35+00 RT.	1	124
R-4	STA. 32+02, 27 RT.	1	95
TOTALS		2	219

DRAINAGE & SANITARY		603	604	604
REF	LOCATION	LINEAL FT.	EACH	EACH
D-1	STA. 34+82, 22 LT.	8	1	1
D-2	STA. 34+97, 16 RT.	8	1	1
TOTALS		8	1	1

HOPKINS ROAD PLAN & PROFILE STA. 32+00 TO STA. 36+00