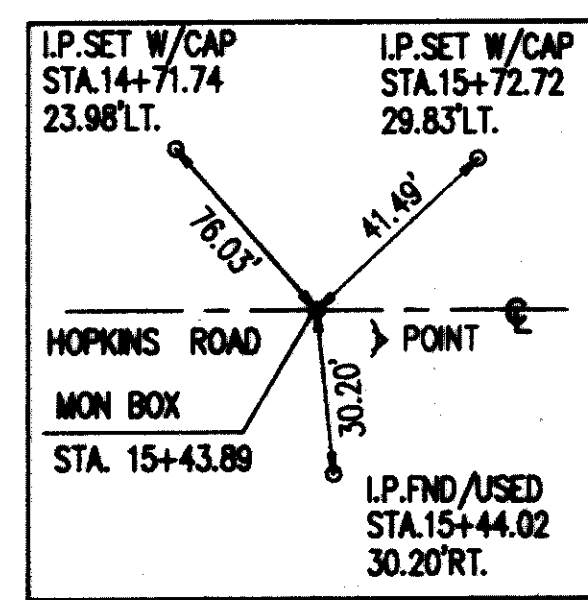
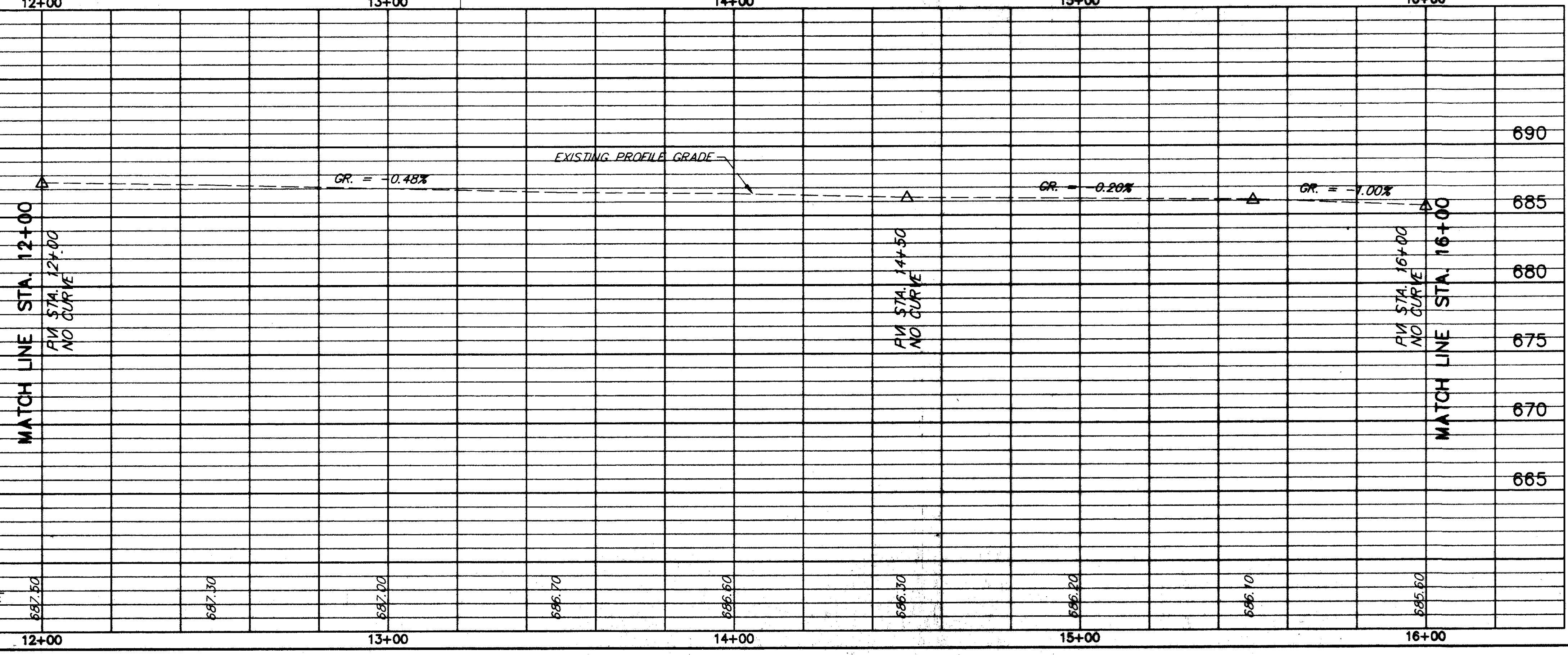


BENCH MARK #2  
 N.E. COR. CONC. STOOP  
 HOUSE #7050  
 STA. 13+00± LT.  
 ELEV. 688.69



FOR TYPICAL SECTIONS SEE SHEETS 9 THRU 12  
 FOR CROSS-SECTIONS SEE SHEETS 100 THRU 140  
 FOR DRIVEWAY SCHEDULE & DETAILS SEE SHEET 23  
 FOR PAVEMENT DETAILS SEE SHEET 171  
 FOR TRAFFIC CONTROL DETAILS SEE SHEETS 172 THRU 198

ITEM NO.	DESCRIPTION	UNIT	QUANTITY	AMOUNT
830	CURB, TYPE 6, AS PER PLAN	LINEAL FT.		
448	1-1/4\"/>			



ROADWAY				
REF	LOCATION	SQ. FT.	EACH	SQ. FT.
R-1	STA. 13+13 RT.	80		80
R-2	STA. 13+68 RT.	80		80
R-3	STA. 15+00, 16' RT.		1	60
TOTALS		160	1	120

DRAINAGE & SANITARY				
REF	LOCATION	INLET ADJUSTED TO GRADE AS PER PLAN	EACH	EACH
D-1	STA. 14+49, 19' LT.		1	
D-2	STA. 15+00, 18' LT.		1	
S-1	STA. 15+54, 12' LT.			1
TOTALS			1	2

H:\CT\92535\CAD\HOPKINS\HOPPP4.DWG 1"=20'

HOPKINS ROAD PLAN & PROFILE STA. 12+00 TO STA. 16+00