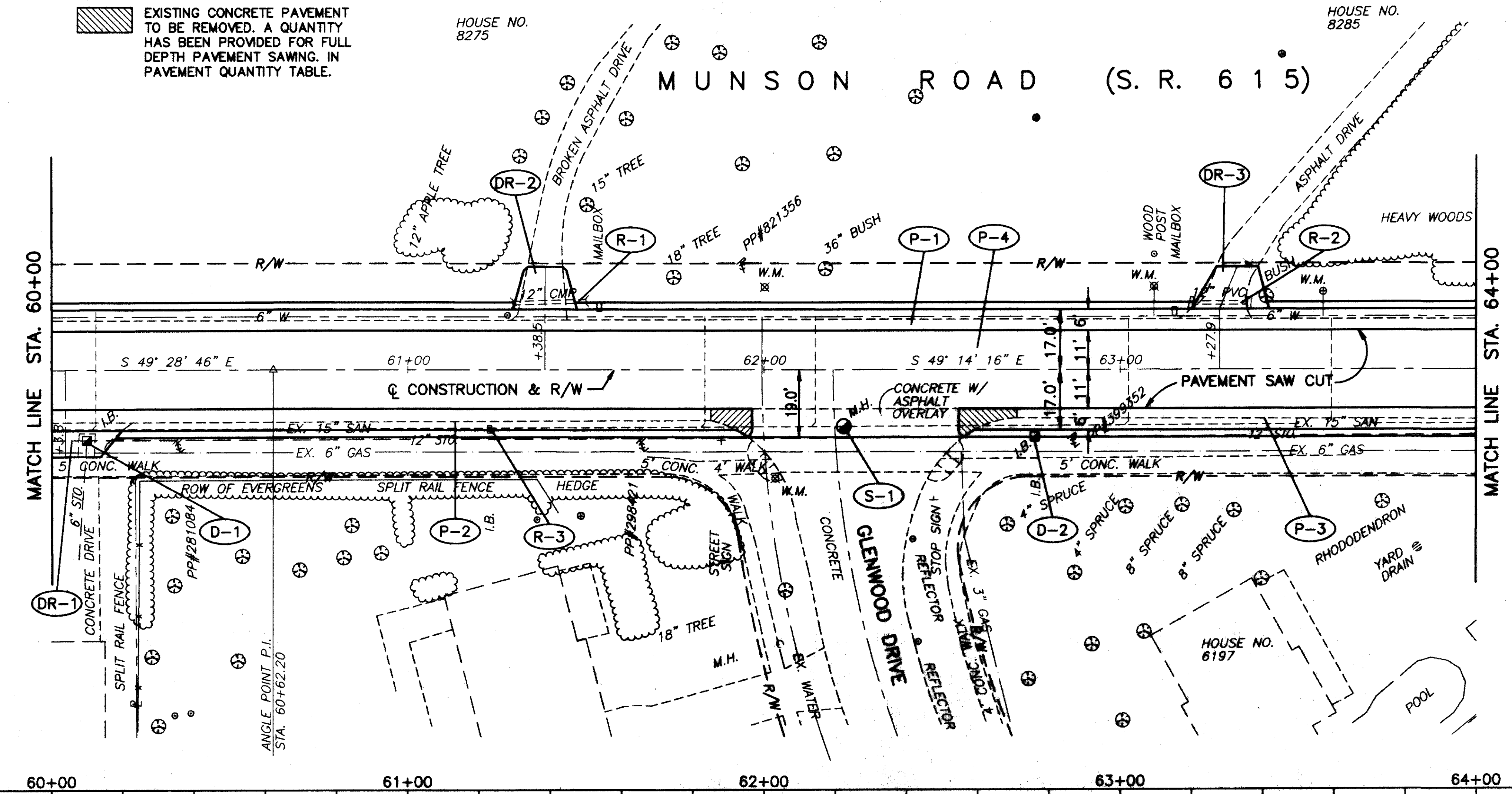
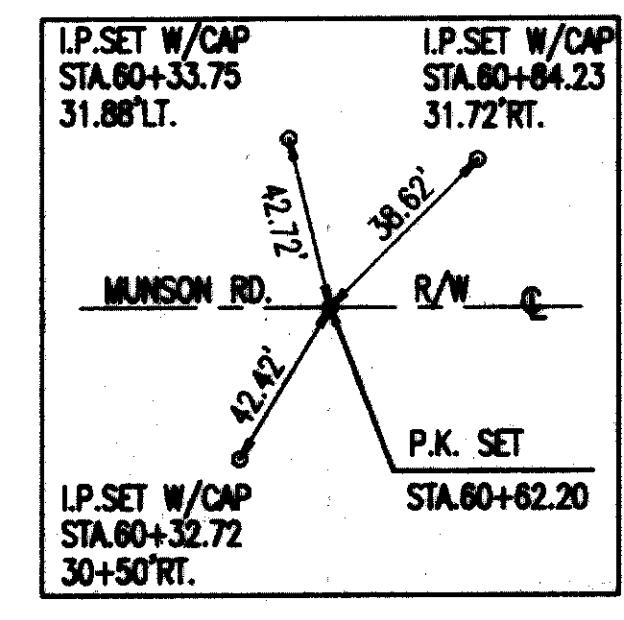


EXISTING CONCRETE PAVEMENT TO BE REMOVED. A QUANTITY HAS BEEN PROVIDED FOR FULL DEPTH PAVEMENT SAWING. IN PAVEMENT QUANTITY TABLE.



BENCH MARK #7
 TOP I.P. SET W/CAP
 STA. 60+33.75, 31.88' LT.
 ELEV. 619.72

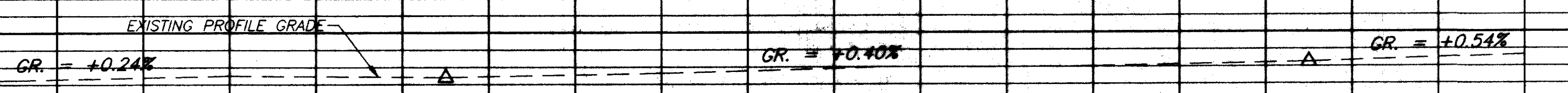


FOR TYPICAL SECTIONS SEE SHEETS 5 THRU 6
 FOR CROSS-SECTIONS SEE SHEETS 48 THRU 79
 FOR DRIVEWAY SCHEDULE & DETAILS SEE SHEETS 21 THRU 22
 FOR PAVEMENT DETAILS SEE SHEET 171
 FOR TRAFFIC CONTROL DETAILS SEE SHEETS 172 THRU 198

RESURFACING PROGRAM	ITEM	UNIT	QTY	UNIT PRICE	TOTAL
RESURFACING	448	1-1/4" ASPH. CONC. SURFACE COURSE, TYPE 1, PG64-22	CU.YD.		35.6
	448	1/2" AVG. ASPH. CONC. INTERMEDIATE COURSE, TYPE 2, PG64-22	CU.YD.		14.3
	407	TACK COAT (@ 0.10 GAL./SQ.YD.)	GAL.	102.6	10.26
	254	PAVEMENT PLANNING, BITUMINOUS	SQ.YD.	1026	1026
PAVEMENT	448	1-1/4" ASPH. CONC. SURFACE COURSE, TYPE 1, PG64-22	CU.YD.	9.3	16.9
	408	BITUMINOUS PRIME COAT (@ 0.40 GAL./SQ.YD.)	GAL.	106.8	42.3
	407	TACK COAT (@ 0.10 GAL./SQ.YD.)	GAL.	28.7	2.87
	304	6" AGGREGATE BASE, AS PER PLAN	CU.YD.	44.4	81.2
	301	6" BITUMINOUS AGGREGATE BASE, PG64-22	CU.YD.	13.4	25.3
	301	8 3/4" BITUMINOUS AGGREGATE BASE, PG64-22	CU.YD.	84.8	118.4
	254	FULL DEPTH PAVEMENT SAW CUT	LINEAL FT.	120	118.4
	203	SUBGRADE COMPACTION	SQ.YD.	286.7	497.3
	203	EXCAVATION NOT INCLUDING EMBANKMENT CONSTRUCTION	CU.YD.	118.5	216.8
	202	PAVEMENT REMOVED	SQ.YD.	7.0	15.4
TOTALS					1026

PAVEMENT LOCATION	TOTALS
REF	
P-1 STA. 60+00 TO 64+00, LT. = 2400 SF.	
P-2 STA. 60+00 TO 61+00, RT. = 1146 SF.	
P-3 STA. 62+58 TO 64+00, RT. = 840 SF.	
P-4 STA. 60+00 TO 64+00, LT. & RT. = 9936 SF.	

EXISTING CENTERLINE GRADES	60+00	61+00	62+00	63+00	64+00
595	595.12	592.26	592.51	592.64	593.66
600					
605					
610					
615					
620					
625					
630					



ROADWAY			
REF	LOCATION	LINEAL FT.	EACH
R-1	STA. 61+30 LT. TO STA. 61+50 LT.	20	
R-2	STA. 63+21 LT. TO STA. 63+37 LT.	16	
R-3	STA. 61+23 RT.		1
TOTALS		36	1

DRAINAGE & SANITARY			
REF	LOCATION	EACH	EACH
D-1	STA. 60+09, 20' RT.	1	
D-2	STA. 62+76, 19' RT.	1	
S-1	STA. 62+22, 16' RT.		1
TOTALS		2	1

H:\CT\92535\CAD\MUNSON\MUNPP14.DWG 1"=20'