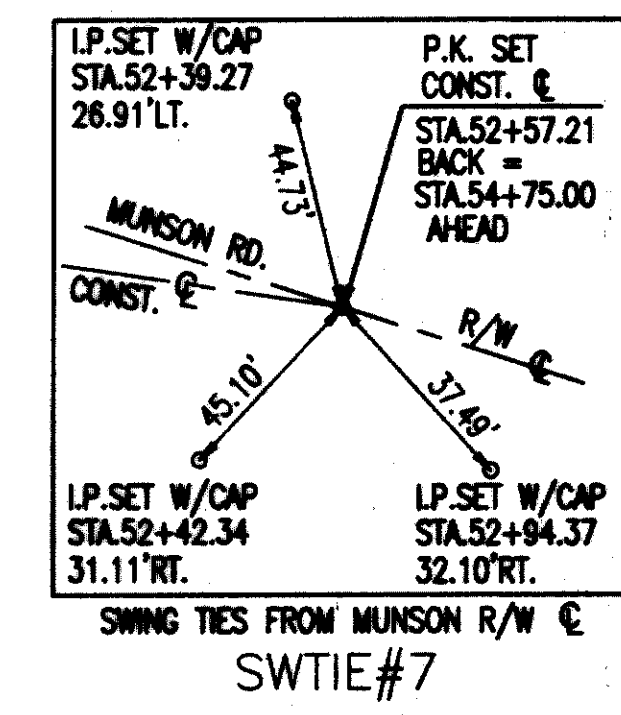


BENCH MARK #5
 TOP I.P. SET W/CAP
 STA. 52+94.37, 32.10' RT.
 ELEV. 619.30

BM5

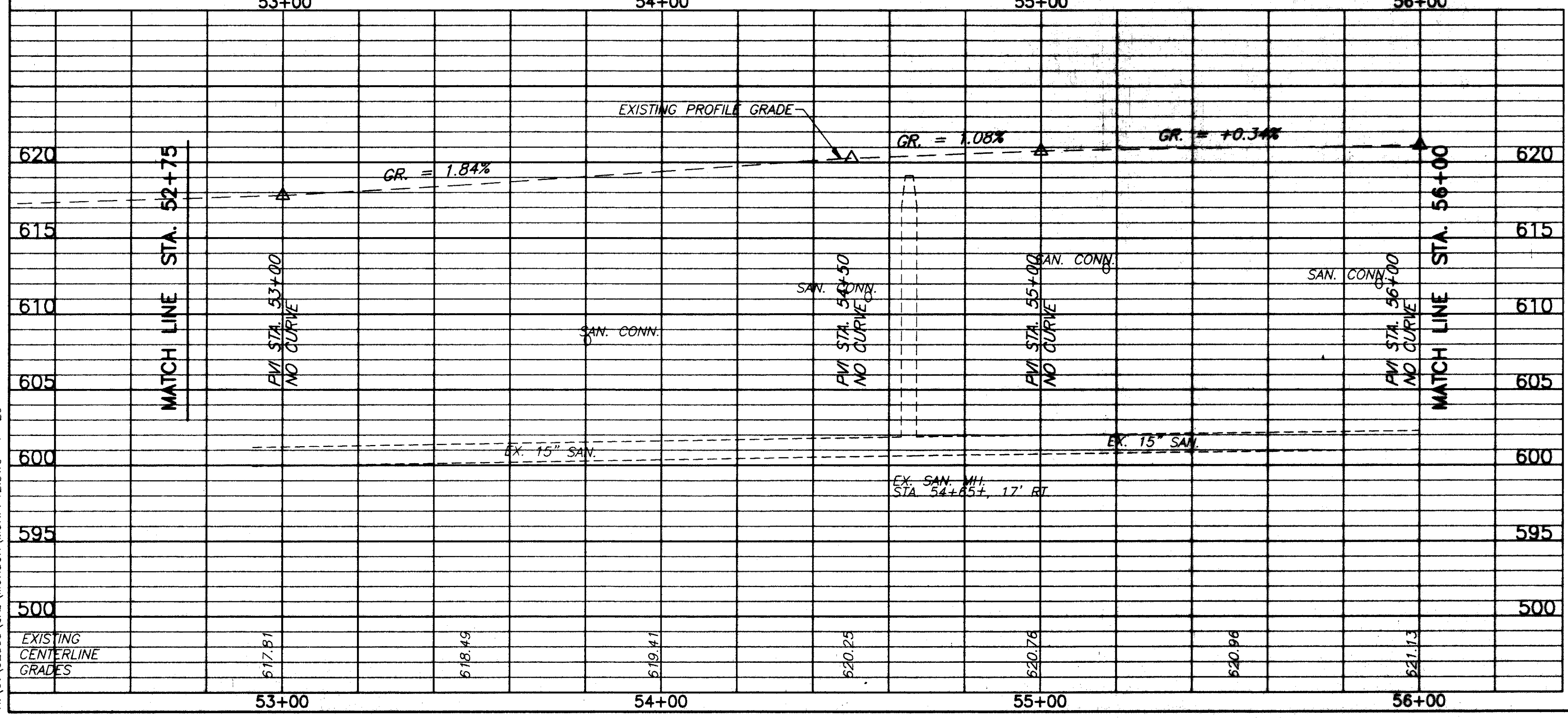


FOR TYPICAL SECTIONS SEE SHEETS 5 THRU 6
 FOR CROSS-SECTIONS SEE SHEETS 48 THRU 79
 FOR DRIVEWAY SCHEDULE & DETAILS SEE SHEETS 21 THRU 22
 FOR PAVEMENT DETAILS SEE SHEET 171
 FOR TRAFFIC CONTROL DETAILS SEE SHEETS 172 THRU 198

RESURFACING PROGRAM	1-1/4" ASPH. CONC. SURFACE COURSE, TYPE 1, PG64-22	1/2" AVG. ASPH. CONC. INTERMEDIATE COURSE, TYPE 2, PG64-22	TACK COAT (0.10 GAL./SQ.YD.)	PAVEMENT PLANNING, BITUMINOUS	CU.YD.	SQ.YD.	CU.YD.	SQ.YD.	CU.YD.	SQ.YD.	CU.YD.	SQ.YD.
448												
448												
407												
254												
448												
408												
407												
304												
301												
301												
203												
203												
TOTALS												

PAVEMENT LOCATION

REF	LOCATION	CU.YD.	SQ.YD.	CU.YD.	SQ.YD.
P-1	STA. 52+75 TO 54+00, LT. = 1950 S.F.	180.8	2143.7	52.7	638.8
P-2	STA. 52+75 TO 54+00, RT. = 1950 S.F.	180.8	2143.7	52.7	638.8
P-3	STA. 54+75 TO 56+00, RT. = 7150 S.F.	106.7	1280.4	31.7	386.4
TOTALS		468.3	5567.8	137.1	1664.0



ROADWAY						
REF	LOCATION	GUARDRAIL REMOVED	PIPE REMOVED, 24" AND UNDER	GUARDRAIL TYPE 5, AS PER PLAN	ANCHOR ASSEMBLY, TYPE A, AS PER PLAN	ANCHOR ASSEMBLY, TYPE 1, AS PER PLAN
R-1	STA. 53+55 LT. TO STA. 53+98 LT.	43				
R-2	STA. 53+66 RT. TO STA. 54+04 RT.	58				
R-3	STA. 53+72 LT.		2			
R-4	STA. 53+92 RT.		6			
R-5	STA. 53+50 TO STA. 54+25, LT.			37.5	1	1
TOTALS		81	8	37.5	1	1

DRAINAGE & SANITARY				
REF	LOCATION	CONCRETE MASONRY	18" CONDUIT TYPE A, 706.02	MANHOLE ADJUSTED TO GRADE AS PER PLAN
D-1	STA. 53+72, 29.5' LT.	2.2	6	
D-2	STA. 53+92, 29.5' RT.	2.2	14	
S-1	STA. 54+85, 17' RT.			1
TOTALS		4.4	20	1

MUNSON ROAD PLAN & PROFILE STA. 52+75 TO STA. 56+00