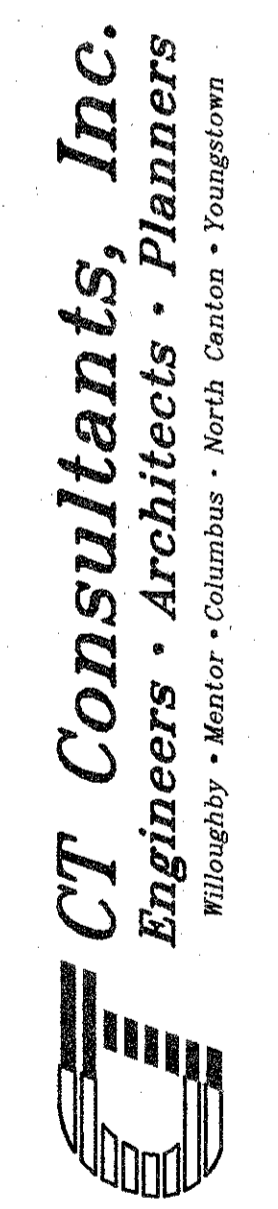


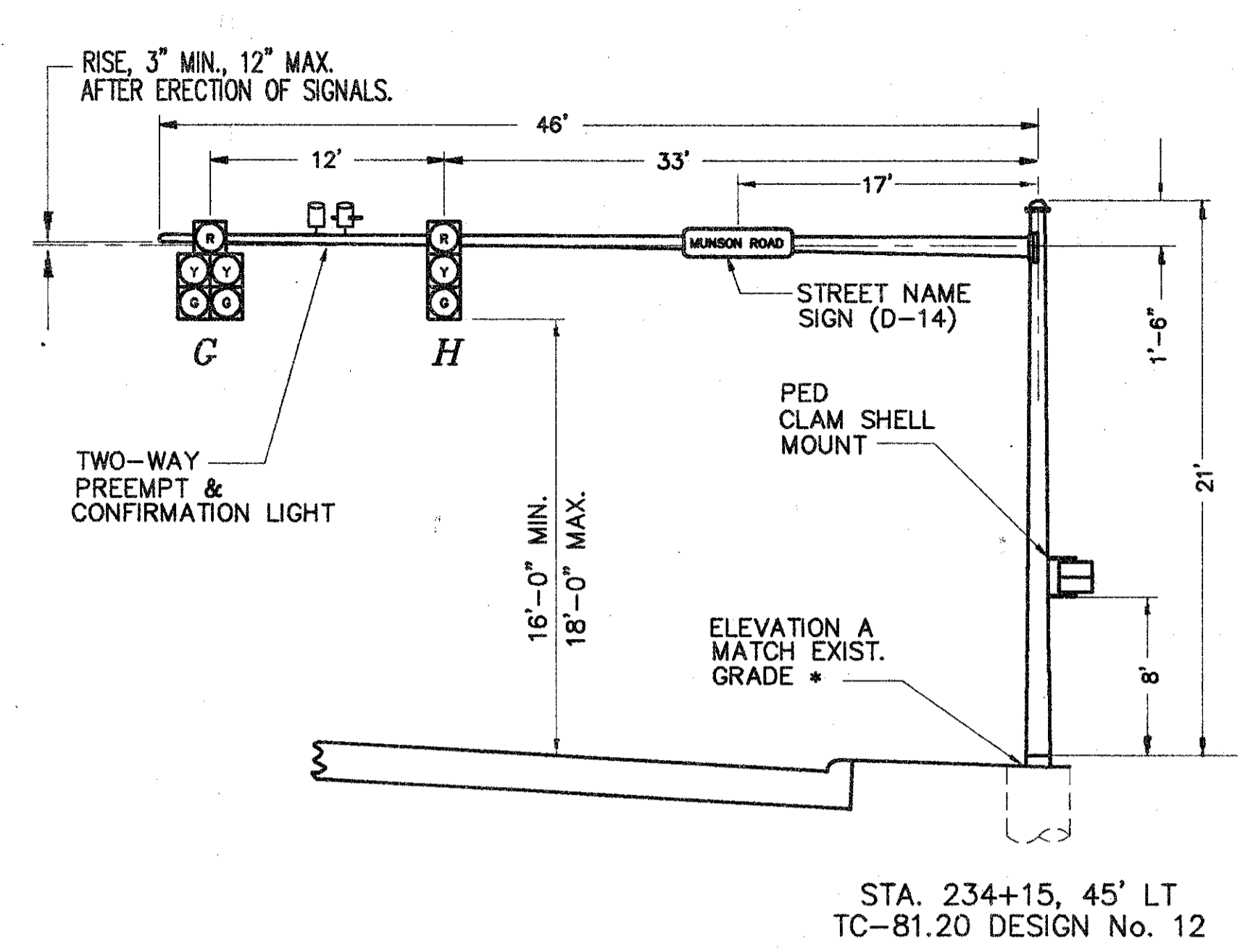
SUBMISSIONS / REVISIONS

**CENTER STREET (STATE ROUTE 615)  
 ROADWAY IMPROVEMENTS  
 SIGNAL SUPPORT DETAILS  
 CENTER STREET / MUNSON ROAD  
 INTERSECTION**

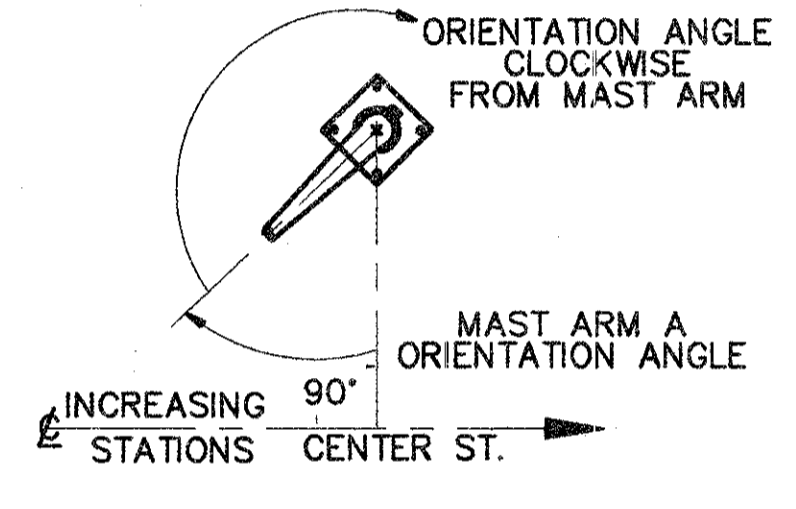


DATE: AUGUST 03, 1999
DRAWN BY: T.E.R.
CHECKED BY: A.E.P.
APPROVED BY: L.M.H.
SCALE: HOR. 1" = 20' VERT. 1" = 5'
CONTRACT NO. <b>98387</b>
SHEET NO. OF <b>103 103</b>

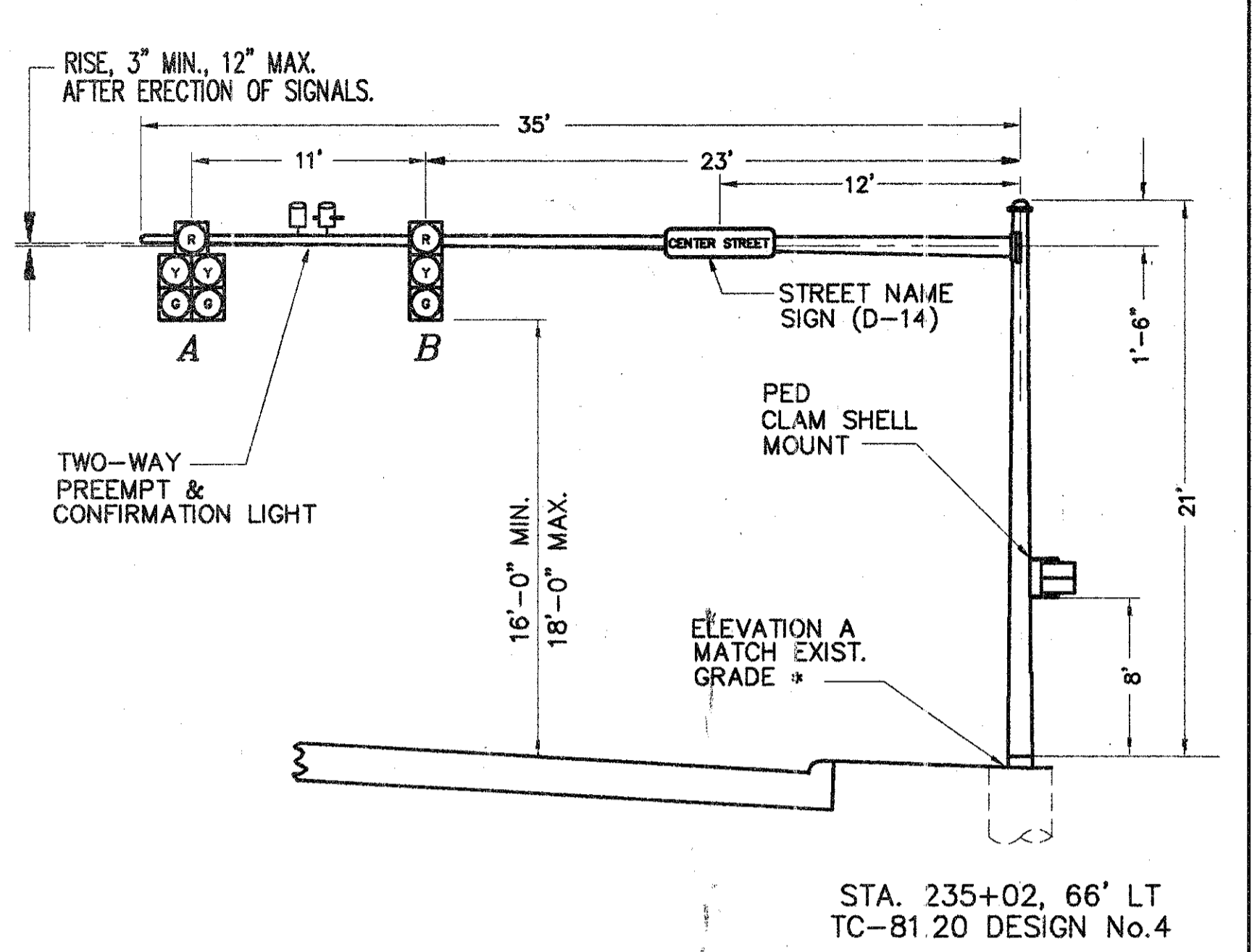
P1	POLE No.
12	DESIGN No.
21'	POLE HT.
234+15	STATION
45' LT	OFFSET
46'	L (FT)
45'	L1 (FT)
33'	L2 (FT)
*	ELEVATION - A
0°	MAST ARM A ORIENTATION ANGLE (DEGS)
-	
-	
-	CABLE ENTRANCE (12" FROM TOP)
270°	PEDESTRIAN SIGNAL (1" BLIND COUPLING, 8' FROM BOTTOM OF POLE)
270°	Y PEDESTRIAN PUSHBUTTON (3'-6" FROM BOTTOM OF POLE)
180°	HANDHOLE
-	2" CAPPED CONDUIT ELL (FUTURE USE)



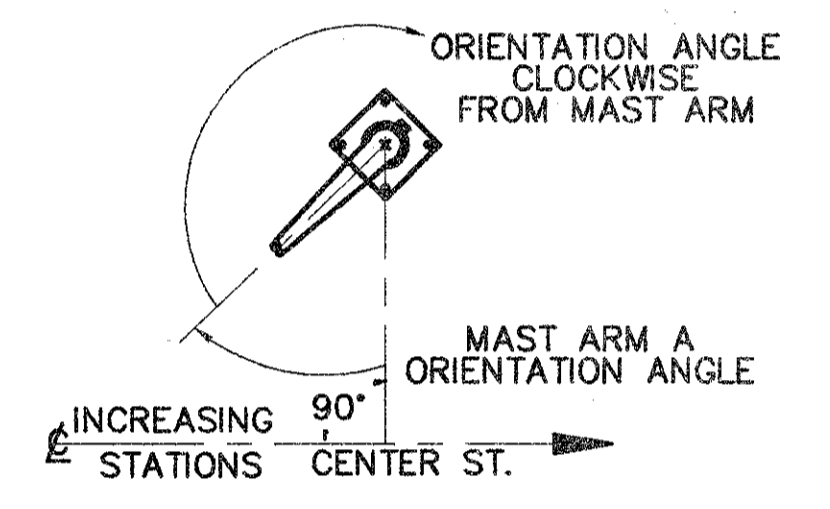
P1 SIGNAL SUPPORT DETAIL



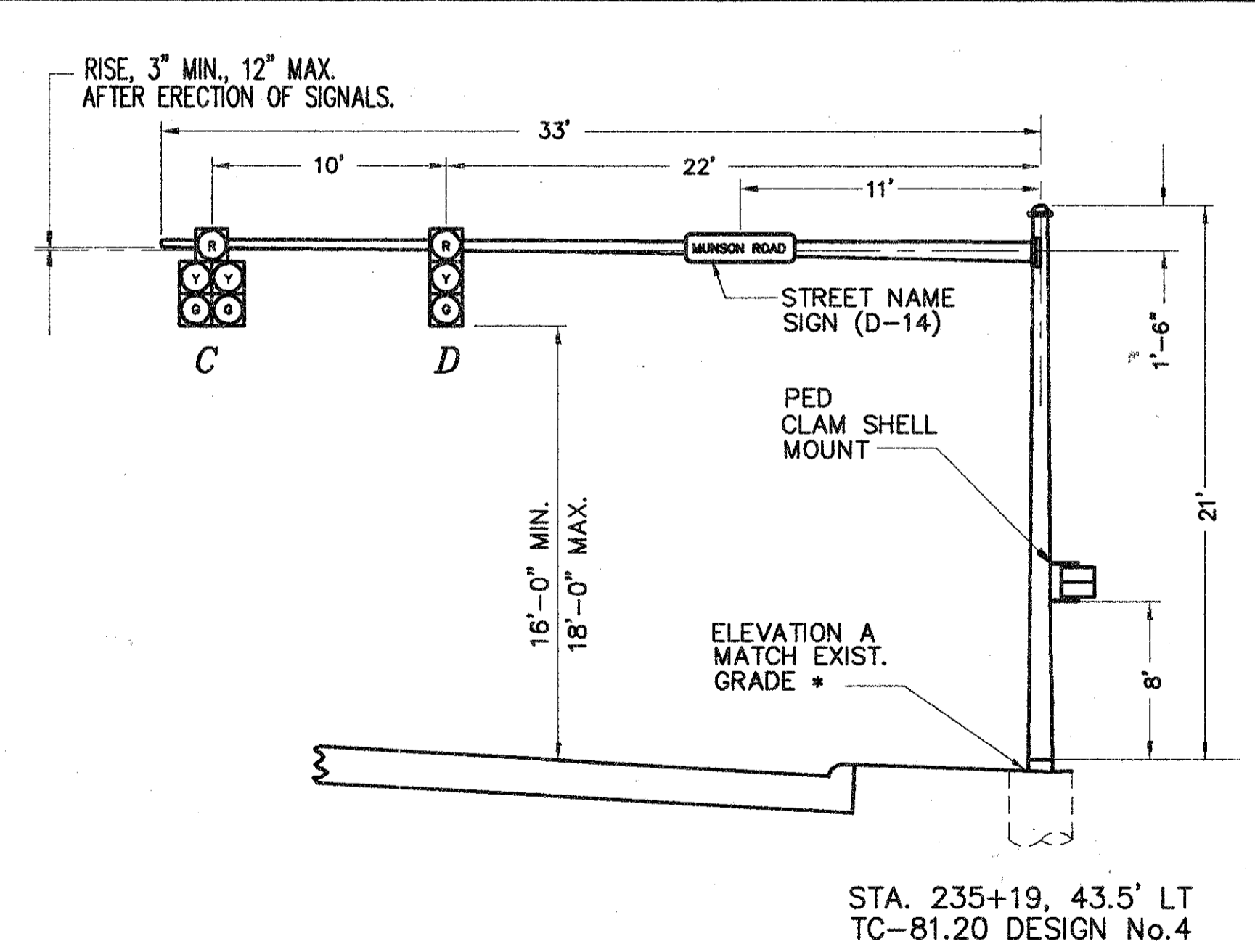
P2	POLE No.
4	DESIGN No.
21'	POLE HT.
235+02	STATION
66' LT	OFFSET
35'	L (FT)
34'	L1 (FT)
23'	L2 (FT)
*	ELEVATION - A
90°	MAST ARM A ORIENTATION ANGLE (DEGS)
-	
-	
-	CABLE ENTRANCE (12" FROM TOP)
180°	PEDESTRIAN SIGNAL (1" BLIND COUPLING, 8' FROM BOTTOM OF POLE)
0°	Z PEDESTRIAN PUSHBUTTON (3'-6" FROM BOTTOM OF POLE)
180°	HANDHOLE
-	2" CAPPED CONDUIT ELL (FUTURE USE)



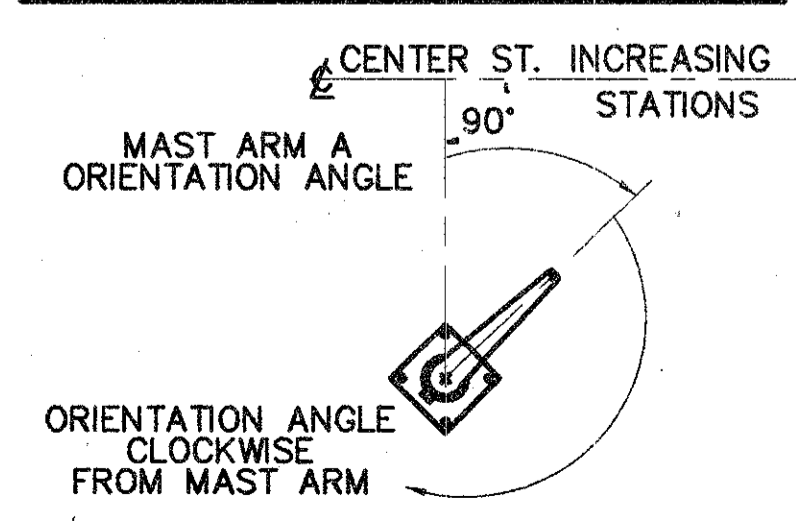
P2 SIGNAL SUPPORT DETAIL



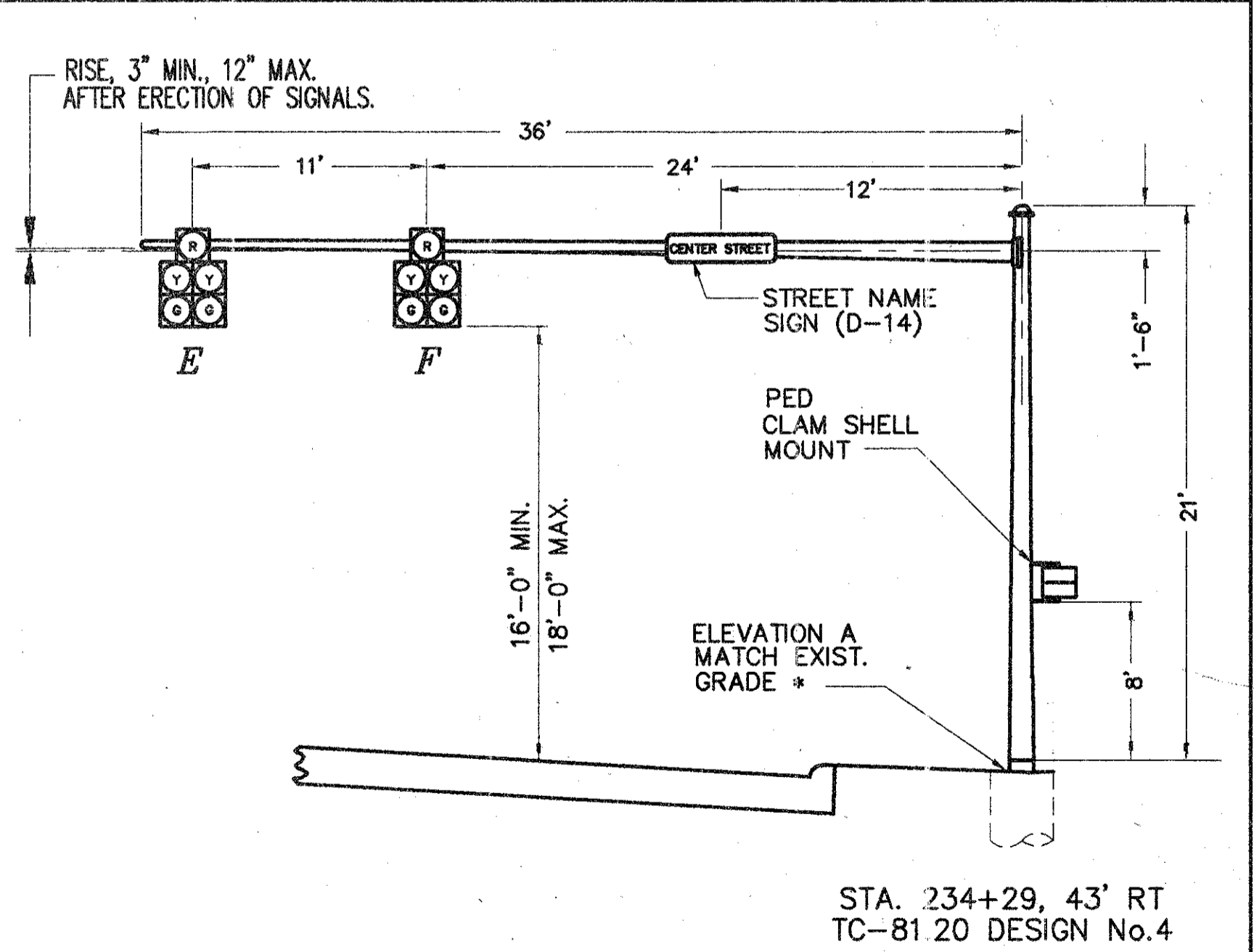
P3	POLE No.
4	DESIGN No.
21'	POLE HT.
235+19	STATION
43.5' LT	OFFSET
33'	L (FT)
32'	L1 (FT)
22'	L2 (FT)
*	ELEVATION - A
0°	MAST ARM A ORIENTATION ANGLE (DEGS)
-	
-	
-	CABLE ENTRANCE (12" FROM TOP)
0°	PEDESTRIAN SIGNAL (1" BLIND COUPLING, 8' FROM BOTTOM OF POLE)
270°	X PEDESTRIAN PUSHBUTTON (3'-6" FROM BOTTOM OF POLE)
270°	Z PEDESTRIAN PUSHBUTTON (3'-6" FROM BOTTOM OF POLE)
180°	HANDHOLE
-	2" CAPPED CONDUIT ELL (FUTURE USE)



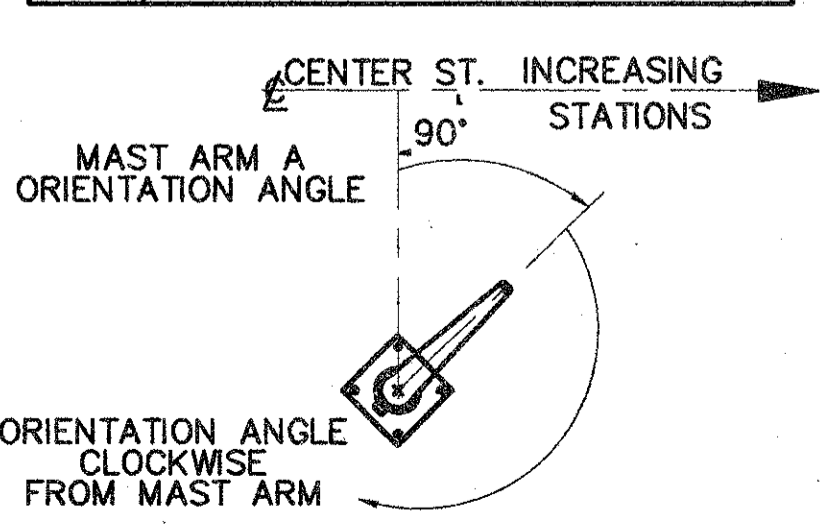
P3 SIGNAL SUPPORT DETAIL



P4	POLE No.
4	DESIGN No.
21'	POLE HT.
234+29	STATION
43' RT	OFFSET
36'	L (FT)
35'	L1 (FT)
24'	L2 (FT)
*	ELEVATION - A
90°	MAST ARM A ORIENTATION ANGLE (DEGS)
-	
-	
-	CABLE ENTRANCE (12" FROM TOP)
270°	PEDESTRIAN SIGNAL (1" BLIND COUPLING, 8' FROM BOTTOM OF POLE)
180°	X PEDESTRIAN PUSHBUTTON (3'-6" FROM BOTTOM OF POLE)
270°	Y PEDESTRIAN PUSHBUTTON (3'-6" FROM BOTTOM OF POLE)
90°	HANDHOLE
-	2" CAPPED CONDUIT ELL (FUTURE USE)



P4 SIGNAL SUPPORT DETAIL



COPYRIGHT - DATE: 02-26-98 - CT CONSULTANTS, INC. N:\PROJECTS\STATE ROUTE 615\DRAWING PLOT-1-00