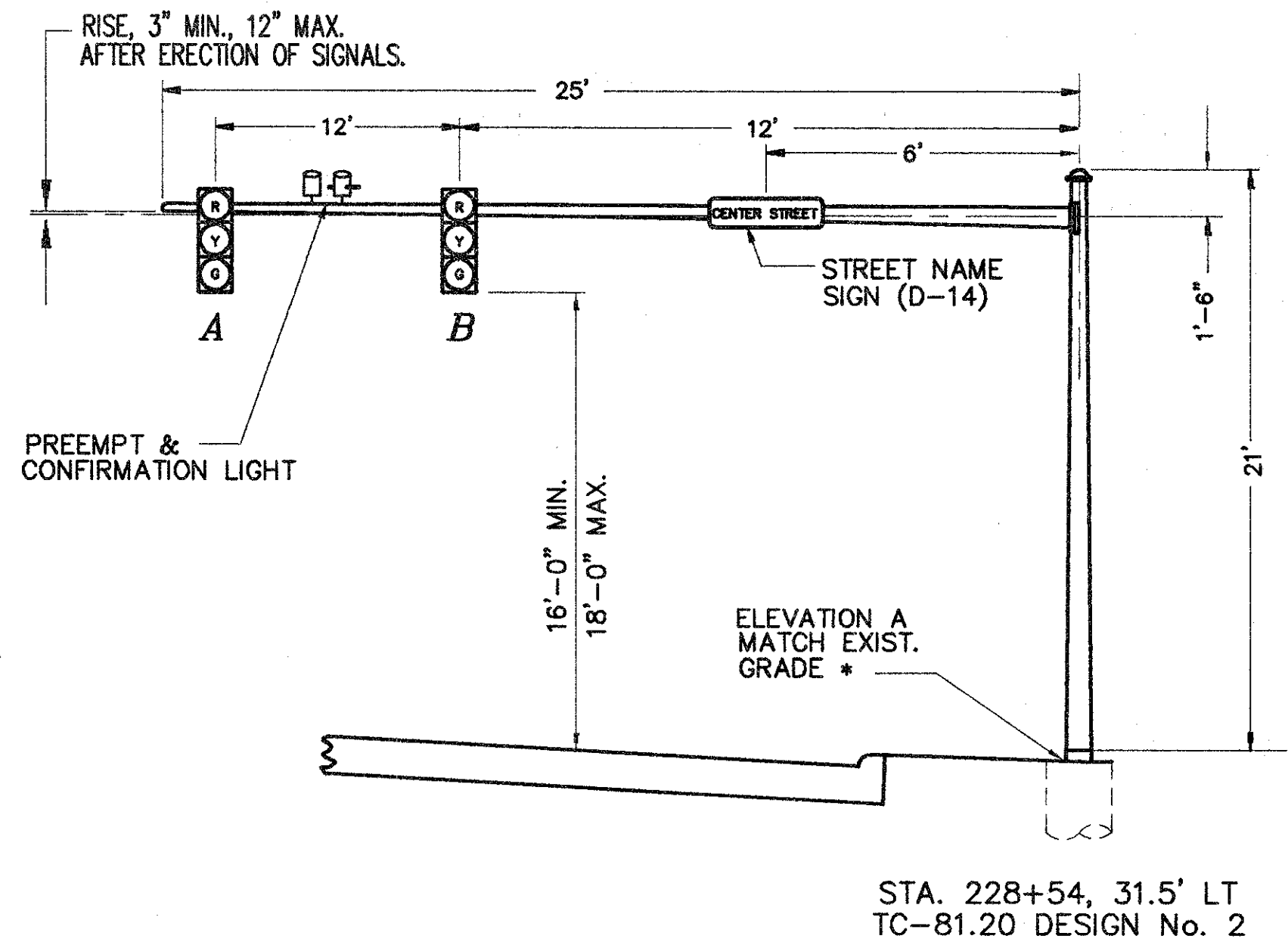
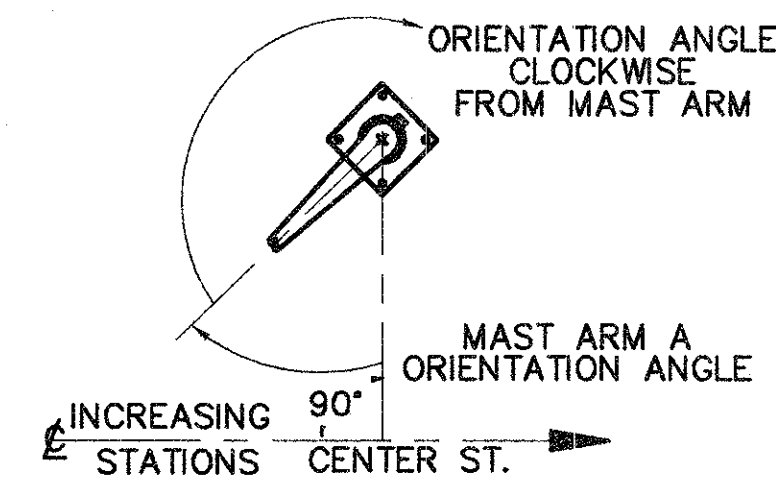


P1	POLE No.
2	DESIGN No.
21'	POLE HT.
228+54	STATION
31.5' LT	OFFSET
25'	L (FT)
24'	L1 (FT)
12'	L2 (FT)
-	-
*	ELEVATION - A
-	-
90°	MAST ARM A ORIENTATION ANGLE (DEGS)
-	-
-	-
-	CABLE ENTRANCE (12" FROM TOP)
N/A	PEDESTRIAN SIGNAL (1" BLIND COUPLING, 8' FROM BOTTOM OF POLE)
N/A	X PEDESTRIAN PUSHBUTTON 3'-6" FROM BOTTOM OF POLE
N/A	Y
90°	HANDHOLE
-	2" CAPPED CONDUIT ELL (FUTURE USE)

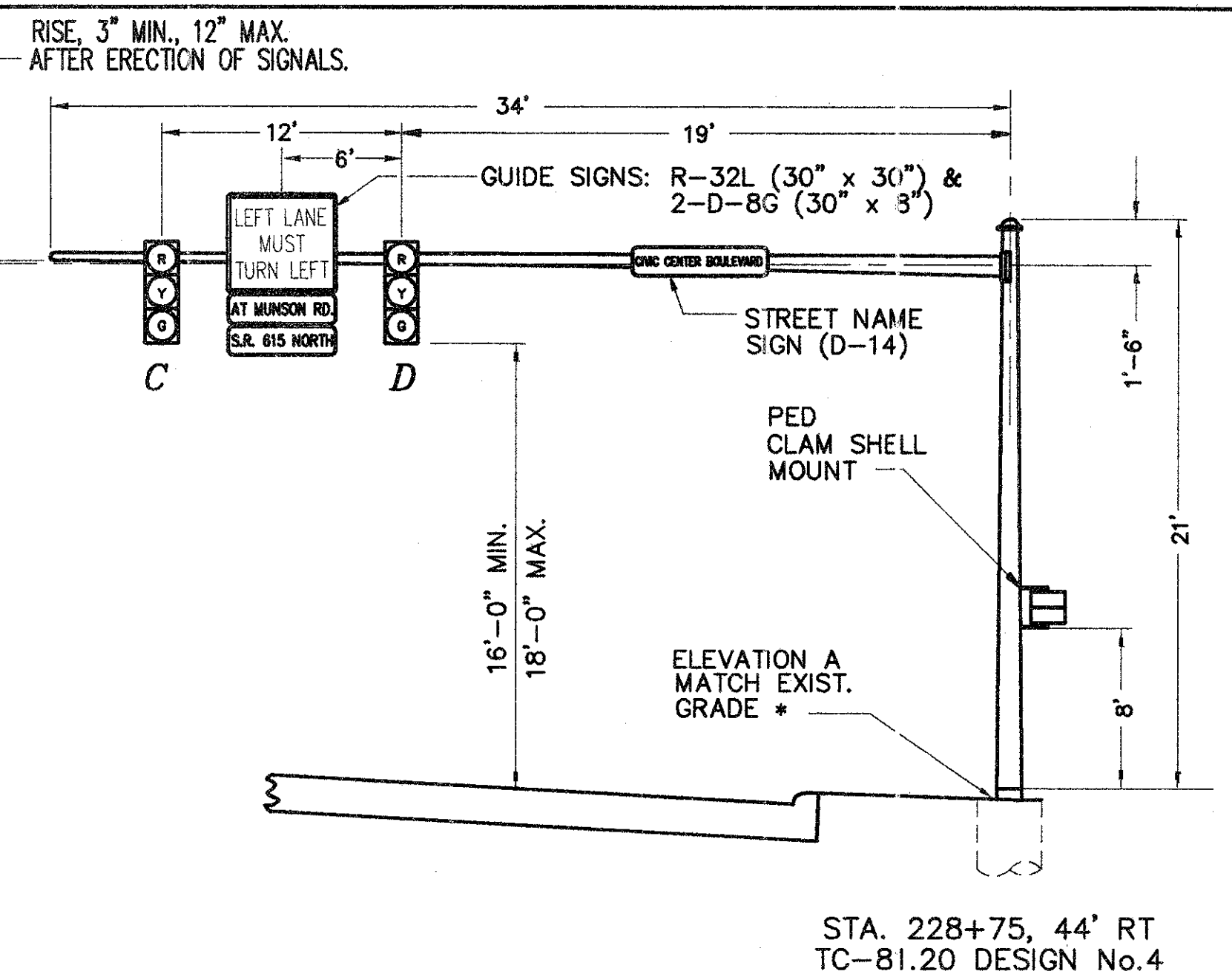


STA. 228+54, 31.5' LT
TC-81.20 DESIGN No. 2

P1 SIGNAL SUPPORT DETAIL

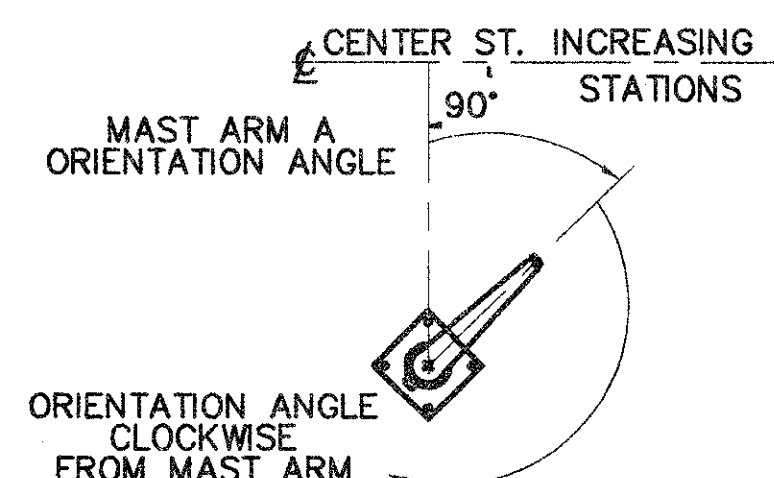


P2	POLE No.
4	DESIGN No.
21'	POLE HT.
228+75	STATION
44' RT	OFFSET
34'	L (FT)
31'	L1 (FT)
19'	L2 (FT)
-	-
-	ELEVATION - A
-	-
0°	MAST ARM A ORIENTATION ANGLE (DEGS)
-	-
-	-
-	CABLE ENTRANCE (12" FROM TOP)
0°	PEDESTRIAN SIGNAL (1" BLIND COUPLING, 8' FROM BOTTOM OF POLE)
0°	X PEDESTRIAN PUSHBUTTON 3'-6" FROM BOTTOM OF POLE
-	Y
90°	HANDHOLE
-	2" CAPPED CONDUIT ELL (FUTURE USE)

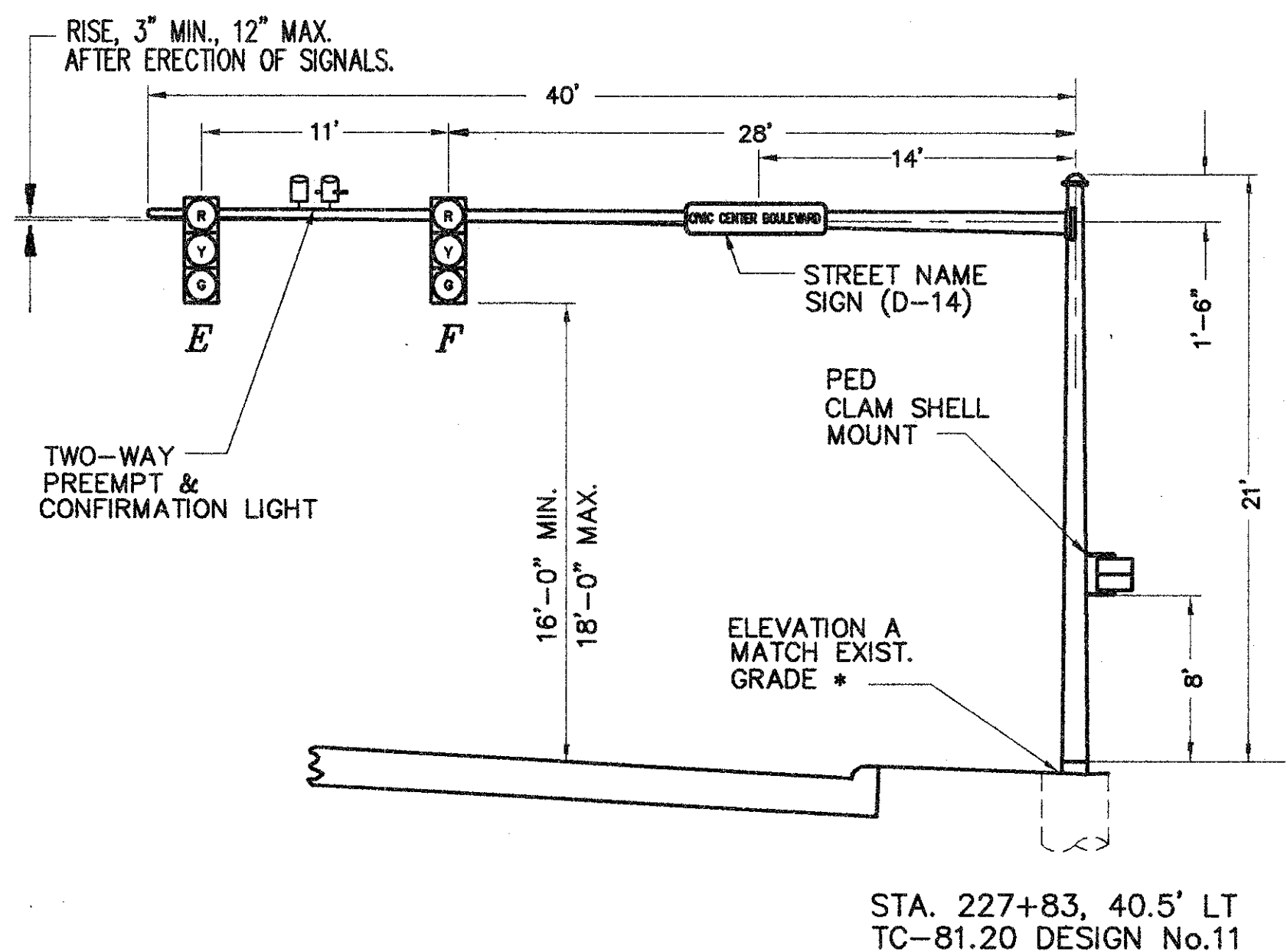


STA. 228+75, 44' RT
TC-81.20 DESIGN No. 4

P2 SIGNAL SUPPORT DETAIL

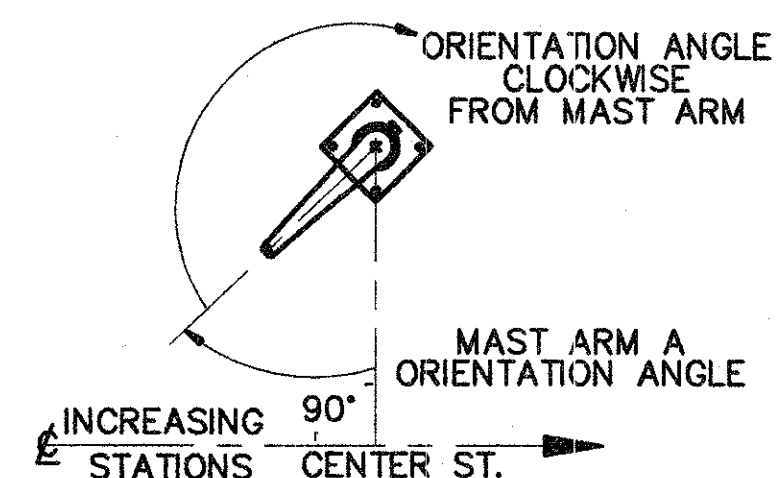


P3	POLE No.
11	DESIGN No.
21'	POLE HT.
227+83	STATION
40.5' LT	OFFSET
40'	L (FT)
39'	L1 (FT)
28'	L2 (FT)
-	-
*	ELEVATION - A
-	-
0°	MAST ARM A ORIENTATION ANGLE (DEGS)
-	-
-	-
-	CABLE ENTRANCE (12" FROM TOP)
90°	PEDESTRIAN SIGNAL (1" BLIND COUPLING, 8' FROM BOTTOM OF POLE)
90°	W PEDESTRIAN PUSHBUTTON 3'-6" FROM BOTTOM OF POLE
-	Y
180°	HANDHOLE
-	2" CAPPED CONDUIT ELL (FUTURE USE)

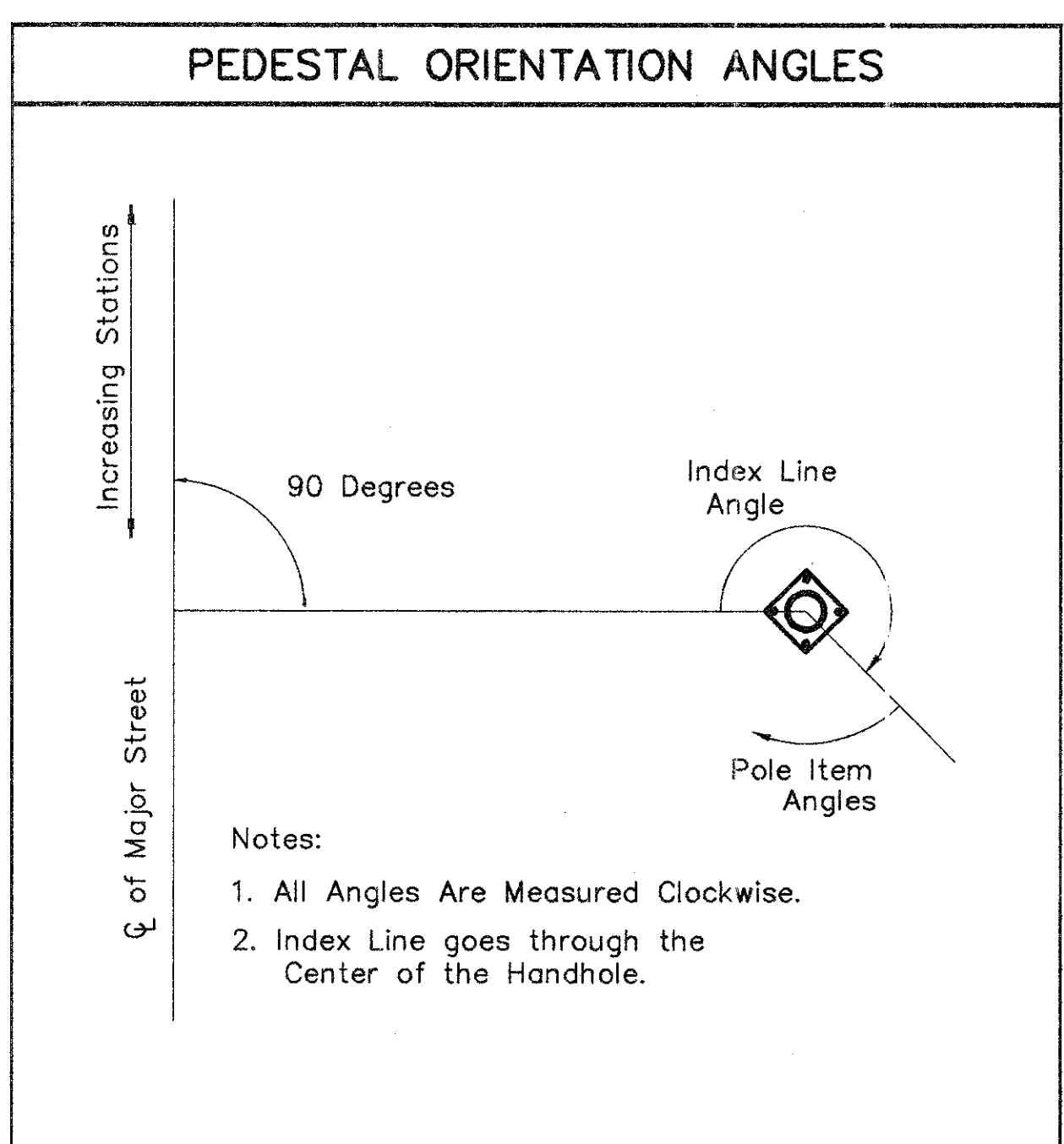


STA. 227+83, 40.5' LT
TC-81.20 DESIGN No. 11

P3 SIGNAL SUPPORT DETAIL



PEDESTAL ORIENTATION ANGLES



STA. 227+62, 55' RT
8' PEDESTAL, TRANSFORMER BASE
W/PEDESTRIAN SIGNAL HEADS & PUSHBUTTONS

P4 PEDESTAL SUPPORT DETAIL

P4	POLE No.
-	DESIGN No.
8'	POLE HT.
227+62	STATION
55' RT	OFFSET
-	-
180°	HANDHOLE ORIENTATION ANGLE
-	-
270°	PEDESTRIAN SIGNAL (1" BLIND COUPLING, 8' FROM BOTTOM OF POLE)
270°	Y PEDESTRIAN PUSHBUTTON
180°	X 3'-6" FROM BOTTOM OF POLE

CENTER STREET (STATE ROUTE 615)
 ROADWAY IMPROVEMENTS
 SIGNAL SUPPORT DETAILS
 CIVIC CENTER BOULEVARD/
 CENTER STREET INTERSECTION

CT Consultants, Inc.
 Engineers • Architects • Planners
 Willoughby • Mentor • Columbus • North Canton • Youngstown

DATE: AUGUST 03, 1999
 DRAWN BY: T.E.B.
 CHECKED BY: A.E.P.
 APPROVED BY: L.M.H.
 SCALE:
 HOR: 1" = 20'
 VERT: 1" = 5'
 CONTRACT No.
98387
 SHEET NO. OF
99 103

COPYRIGHT - DATE 08-02-99, CT CONSULTANTS INC. H:\1998\98387\TRAFFIC\98387T.DWG PLOT:12x20