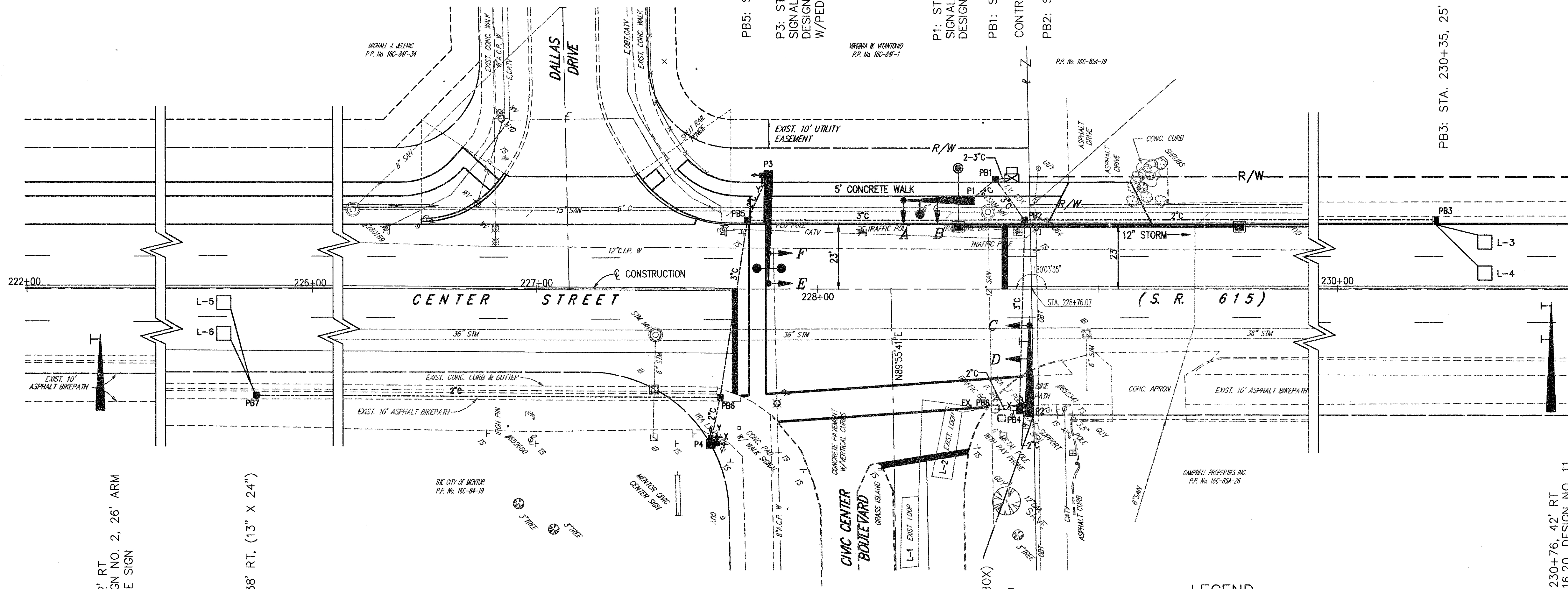
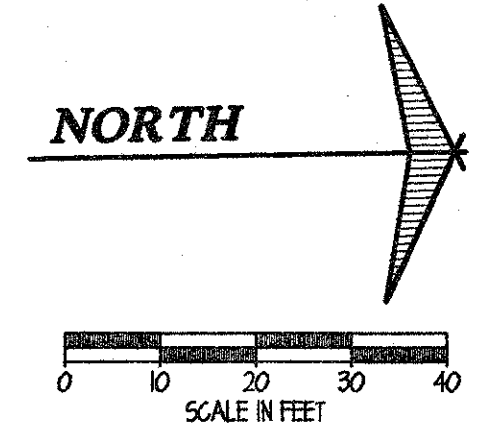
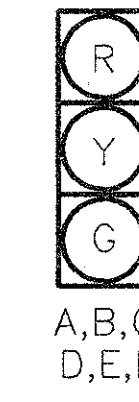


LOOP	SIZE	URNS	MODE	DELAY	PHASE	REMARK	INHIBITED DELAY	LOCATION 1st FRONT CORNER	LOCATION 2nd FRONT CORNER
L-1	-	-	-	-	-	EXISTING	-	-	-
L-2	-	-	-	-	-	EXISTING	-	-	-
L-3	5X5	3	PULSE	-	φ6	STANDARD	-	STA. 230+50.14'RT	STA. 230+50.19'RT
L-4	5X5	3	PULSE	-	φ6	STANDARD	-	STA. 230+50.3'RT	STA. 230+50.8'RT
L-5	5X5	3	PULSE	-	φ2	STANDARD	-	STA. 225+71.3'RT	STA. 225+71.8'RT
L-6	5X5	3	PULSE	-	φ2	STANDARD	-	STA. 225+71.14'RT	STA. 225+71.19'RT

LOOP DETECTOR CHART



12" POLYCARBONATE SIGNAL HEADS



PHASING DIAGRAM

LEGEND

- -- EMERGENCY PREEMPT & INDICATOR LIGHT
- ⬮ -- SIGNAL HEAD & DESIGNATION

FUNCTION	φ1	φ2	φ3	φ4	φ5	φ6	φ7	φ8
INITIAL GREEN	-	26.0	-	-	-	26.0	-	22.0
MINIMUM GREEN	-	-	-	-	-	-	-	-
VEHICLE EXTENSION	-	5.0	-	-	-	5.0	-	3.0
MAXIMUM GREEN	-	30.0	-	-	-	30.0	-	30.0
PEDESTRIAN WALK	-	5.0	-	-	-	-	-	5.0
PEDESTRIAN CLEARANCE	-	21.0	-	-	-	-	-	17.0
VEHICLE YELLOW CLEARANCE	-	3.5	-	-	-	3.5	-	3.5
VEHICLE ALL RED CLEARANCE	-	2.0	-	-	-	2.0	-	2.0
RECALL	-	VEH	-	-	-	VEH	-	PED
MEMORY	-	N.L.	-	-	-	N.L.	-	N.L.

SIGNAL TIMING CHART

P5: STA. 222+26, 42' RT, TYPE TC-16.20, DESIGN NO. 2, 26' ARM WITH 54" X 42" GUIDE SIGN

PB7: STA. 225+80, 38' RT, (13" X 24")

P4: STA. 227+62, 55' RT, 8' PEDESTAL W/TRANSFORMER BASE PED. SIGNAL HEADS & PUSHBUTTONS

PB6: STA. 227+65, 39' RT, (13" X 24")

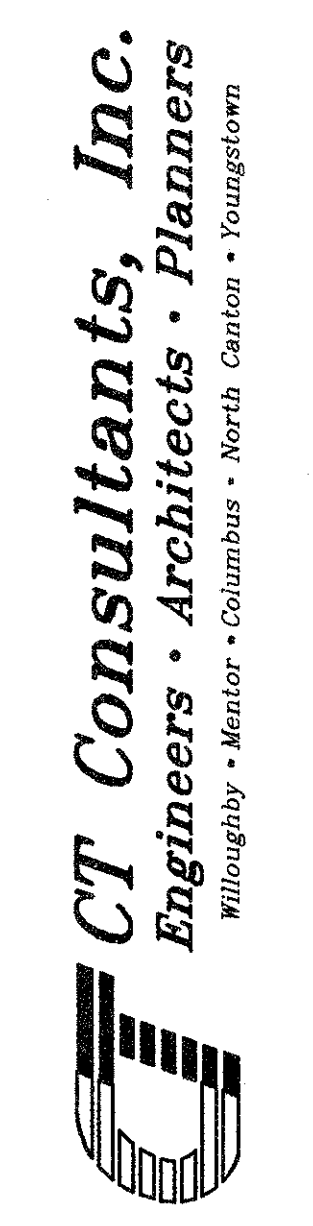
PB8: STA. 228+63, 43' RT, (EXIST. PULLBOX)

PB4: STA. 228+72, 43.5' RT, (17" X 30")

P2: STA. 228+75, 44' RT, SIGNAL SUPPORT, TYPE TC-81.20 DESIGN NO. 4, 34' ARM W/PED. SIGNAL HEAD & PUSHBUTTON, R-32L (30" x 30") AND R-2-D-86 (30" x 8") GUIDE SIGNS

P6: STA. 230+76, 42' RT, TYPE TC-16.20, DESIGN NO. 11, 38' ARM, WITH M-37, M-2, R-26A & R-29A GUIDE SIGNS

CENTER STREET (STATE ROUTE 615) ROADWAY IMPROVEMENTS SIGNAL PLAN CIVIC CENTER BOULEVARD/ CENTER STREET INTERSECTION



DATE:	AUGUST 03, 1999
DRAWN BY:	T.E.B.
CHECKED BY:	A.E.P.
APPROVED BY:	I.M.H.
HOR. SCALE:	1" = 20'
VERT. SCALE:	-
CONTRACT NO.:	98387
SHEET NO.:	97
OF	103

COPYRIGHT - DME, 08-03-99, CT CONSULTANTS, INC. H:\1998\0837\TRAFFIC\0837102.DWG, PLOT: 10-90