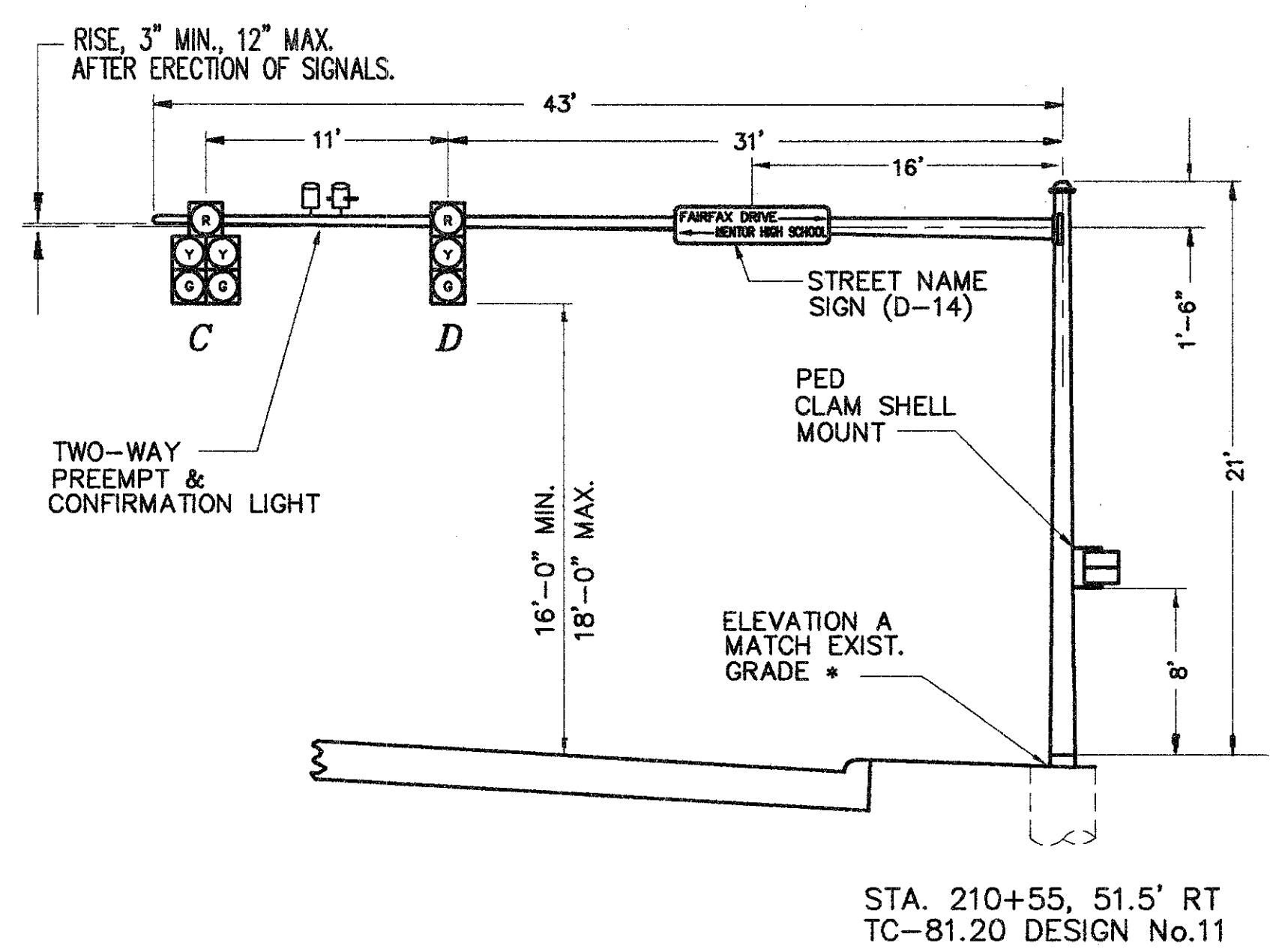
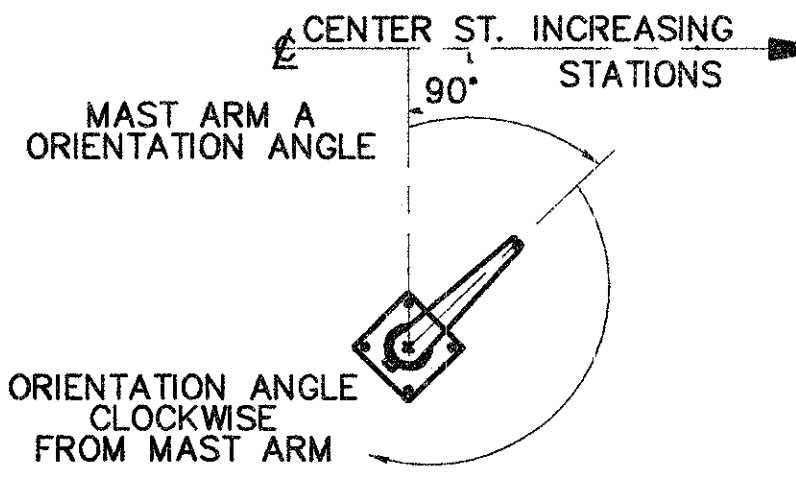


P1	POLE No.
11	DESIGN No.
21'	POLE HT.
210+55	STATION
51.5' RT	OFFSET
43'	L (FT)
42'	L1 (FT)
31'	L2 (FT)
-	
*	ELEVATION - A
-	
0°	MAST ARM A ORIENTATION ANGLE (DEGS)
-	
-	
-	CABLE ENTRANCE (12" FROM TOP)
0°	PEDESTRIAN SIGNAL
90°	(1" BLIND COUPLING, 8' FROM BOTTOM OF POLE)
0°	X PEDESTRIAN PUSHBUTTON
90°	Y 3'-6" FROM BOTTOM OF POLE
180°	HANDHOLE
-	2" CAPPED CONDUIT ELL (FUTURE USE)

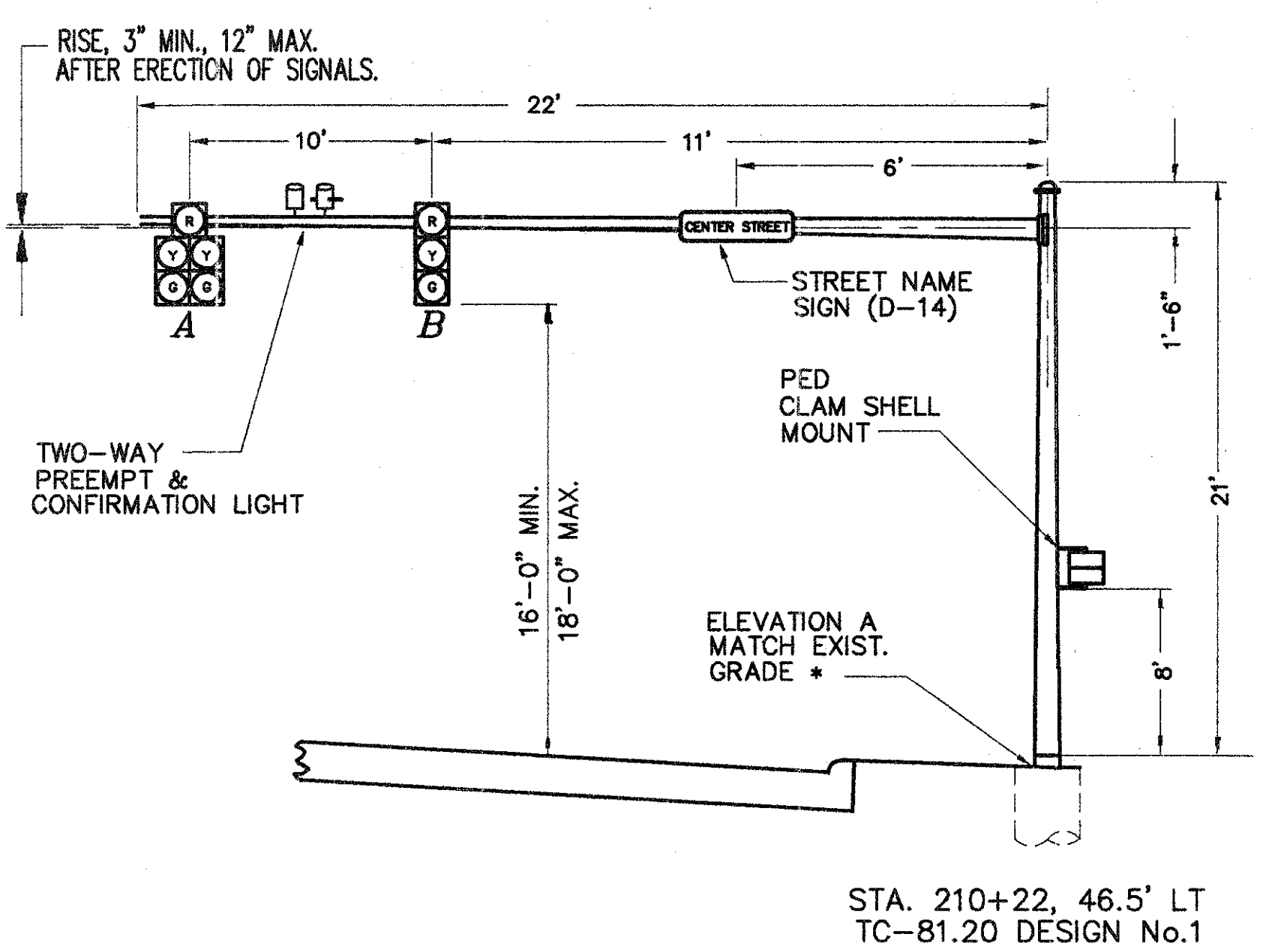


STA. 210+55, 51.5' RT
TC-81.20 DESIGN No.11

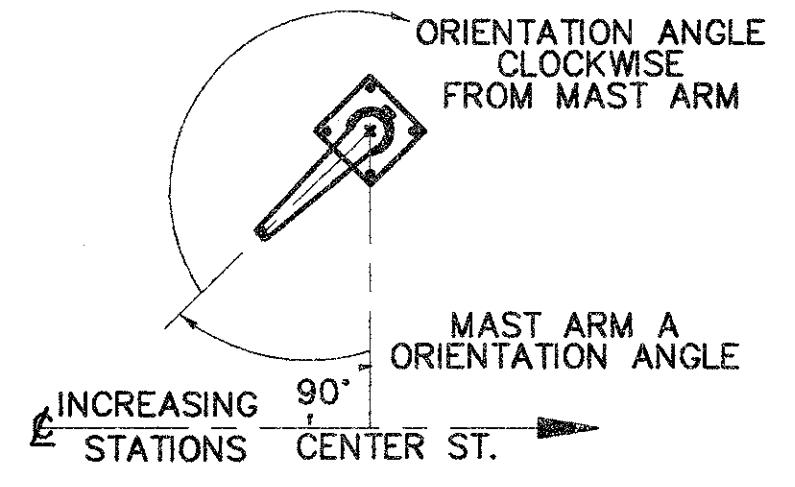


P1 SIGNAL SUPPORT DETAIL

P2	POLE No.
1	DESIGN No.
21'	POLE HT.
210+22	STATION
46.5' LT	OFFSET
22'	L (FT)
21'	L1 (FT)
11'	L2 (FT)
-	
-	ELEVATION - A
-	
90°	MAST ARM A ORIENTATION ANGLE (DEGS)
-	
-	
-	CABLE ENTRANCE (12" FROM TOP)
270°	PEDESTRIAN SIGNAL
-	(1" BLIND COUPLING, 8' FROM BOTTOM OF POLE)
270°	W PEDESTRIAN PUSHBUTTON
-	3'-6" FROM BOTTOM OF POLE
90°	HANDHOLE
-	2" CAPPED CONDUIT ELL (FUTURE USE)

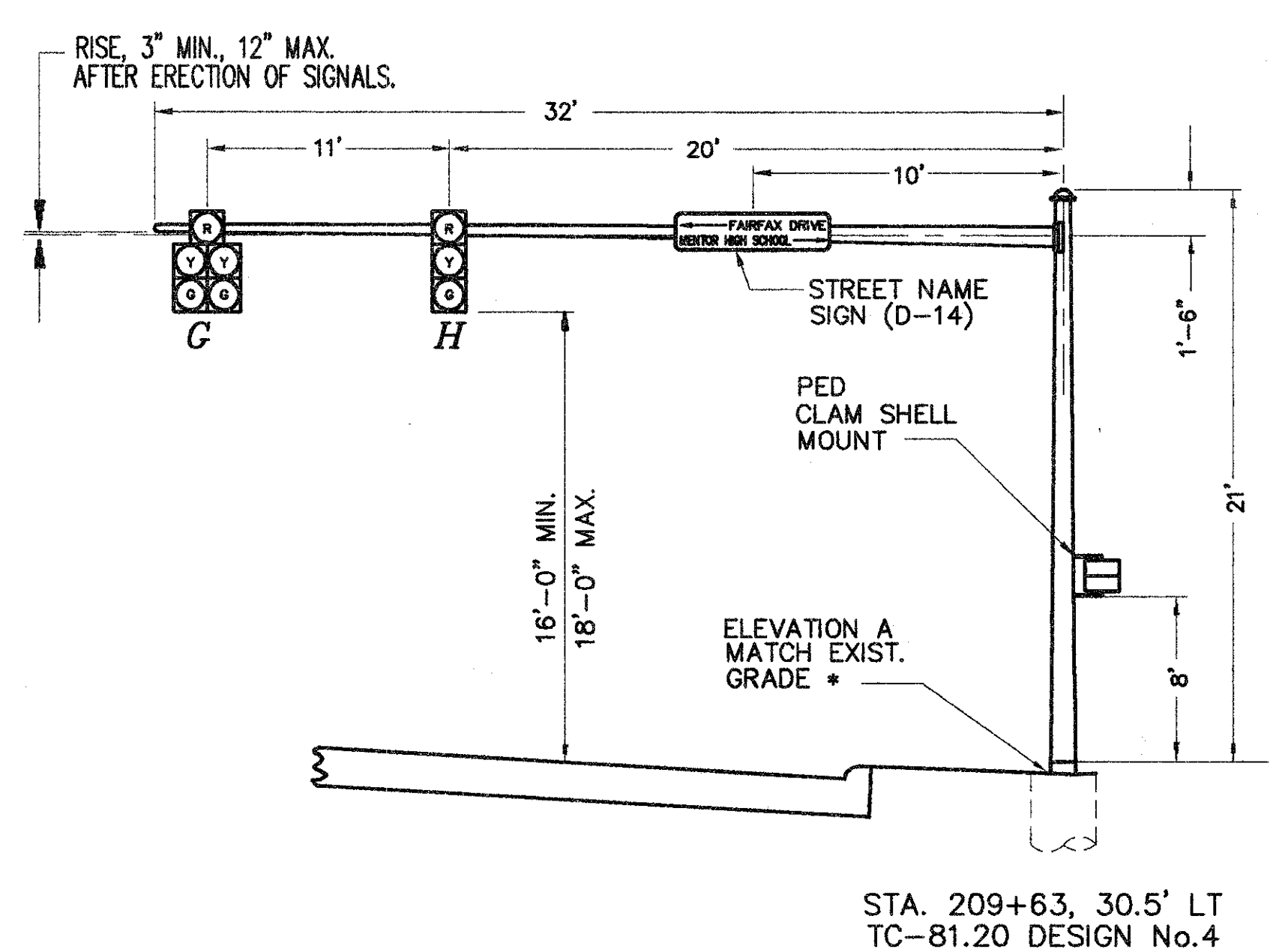


STA. 210+22, 46.5' LT
TC-81.20 DESIGN No.1

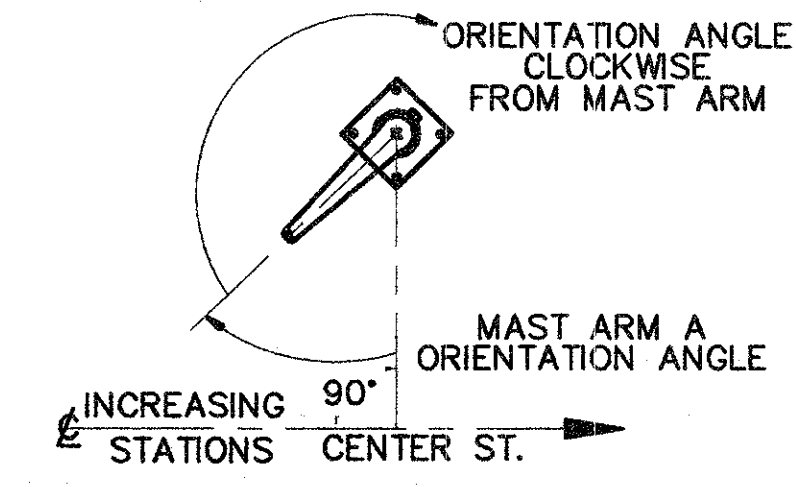


P2 SIGNAL SUPPORT DETAIL

P3	POLE No.
4	DESIGN No.
21'	POLE HT.
209+63	STATION
30.5' LT	OFFSET
32'	L (FT)
31'	L1 (FT)
20'	L2 (FT)
-	
*	ELEVATION - A
-	
0°	MAST ARM A ORIENTATION ANGLE (DEGS)
-	
-	
-	CABLE ENTRANCE (12" FROM TOP)
180°	PEDESTRIAN SIGNAL
-	(1" BLIND COUPLING, 8' FROM BOTTOM OF POLE)
180°	W PEDESTRIAN PUSHBUTTON
-	3'-6" FROM BOTTOM OF POLE
90°	HANDHOLE
-	2" CAPPED CONDUIT ELL (FUTURE USE)

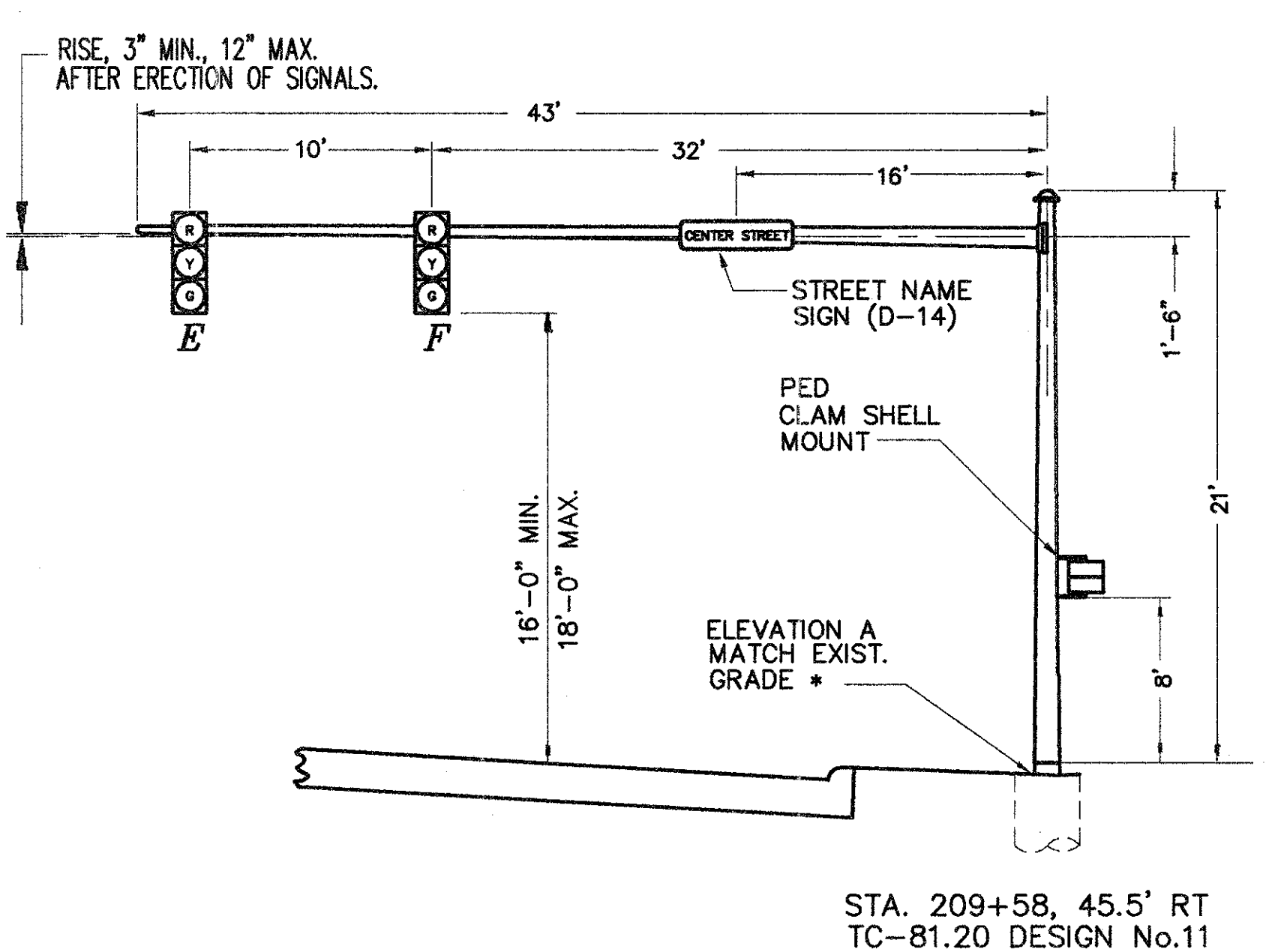


STA. 209+63, 30.5' LT
TC-81.20 DESIGN No.4

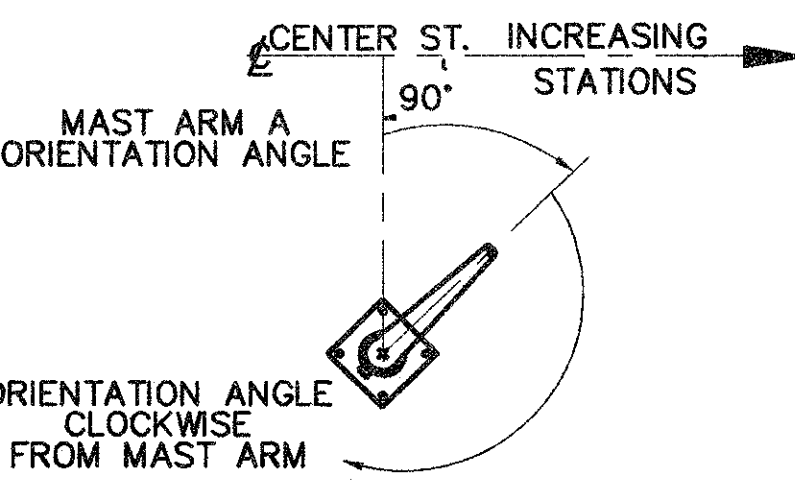


P3 SIGNAL SUPPORT DETAIL

P4	POLE No.
11	DESIGN No.
21'	POLE HT.
209+58	STATION
45.5' RT	OFFSET
43'	L (FT)
42'	L1 (FT)
32'	L2 (FT)
-	
*	ELEVATION - A
-	
90°	MAST ARM A ORIENTATION ANGLE (DEGS)
-	
-	
-	CABLE ENTRANCE (12" FROM TOP)
270°	PEDESTRIAN SIGNAL
-	(1" BLIND COUPLING, 8' FROM BOTTOM OF POLE)
270°	X PEDESTRIAN PUSHBUTTON
-	3'-6" FROM BOTTOM OF POLE
90°	HANDHOLE
-	2" CAPPED CONDUIT ELL (FUTURE USE)



STA. 209+58, 45.5' RT
TC-81.20 DESIGN No.11



P4 SIGNAL SUPPORT DETAIL



SUBMISSIONS / REVISIONS	

**CENTER STREET (STATE ROUTE 615)
ROADWAY IMPROVEMENTS
SIGNAL SUPPORT DETAILS**
FAIRFAX DRIVE / MENTOR HIGH SCHOOL
ENTRANCE / CENTER STREET INTERSECTION

CT Consultants, Inc.
Engineers • Architects • Planners
Willoughby • Mentor • Columbus • North Canton • Youngstown

DATE:	AUGUST 03, 1999
DRAWN BY:	T.E.B.
CHECKED BY:	A.E.P.
APPROVED BY:	I.M.H.
HOR. SCALE:	1" = 20'
VERT. SCALE:	1" = 5'
CONTRACT No.	98387
SHEET No.	OF
95	103

COPYRIGHT - DATE: 07-25-98, CT CONSULTANTS INC. H:\V\98\98387\TRAFFIC\98387SIG.DWG PLOT:14-20