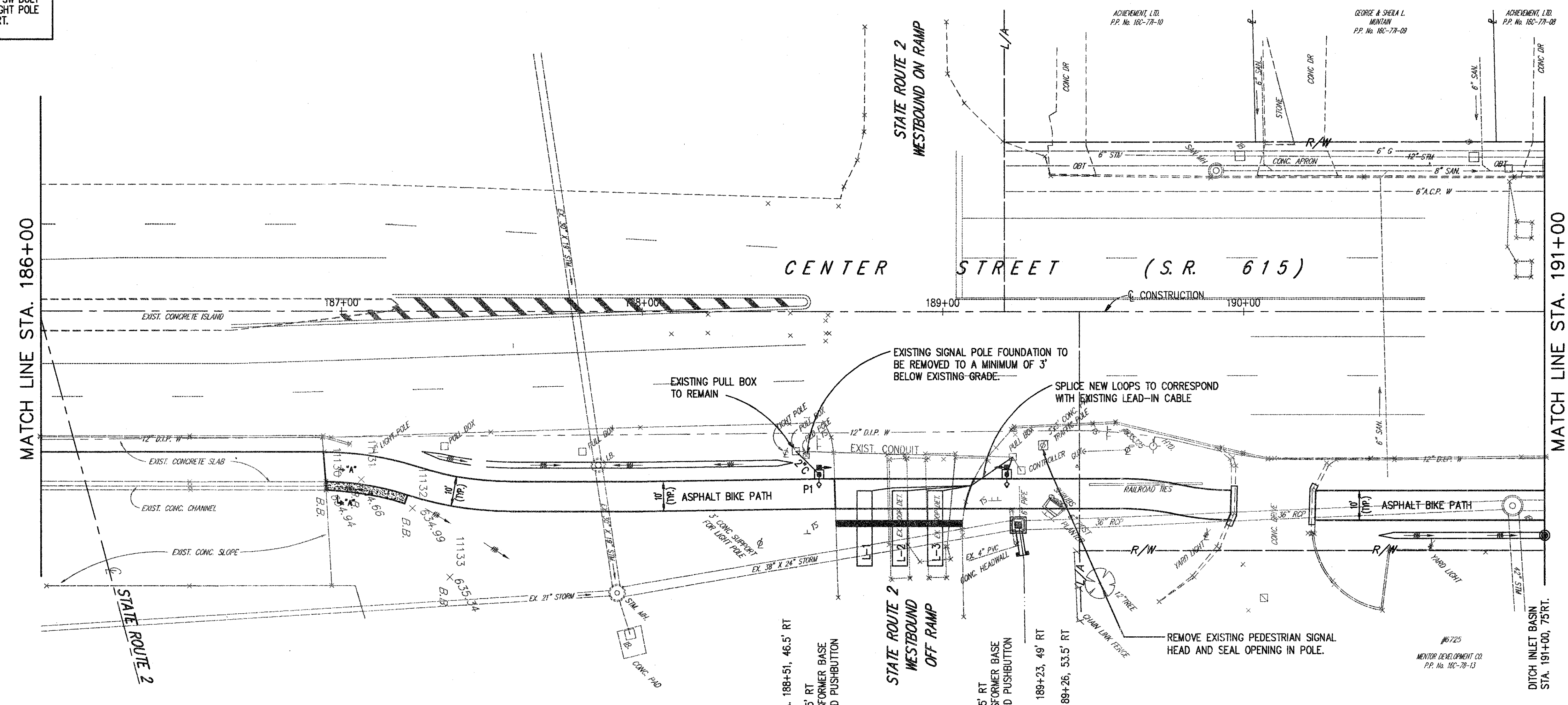
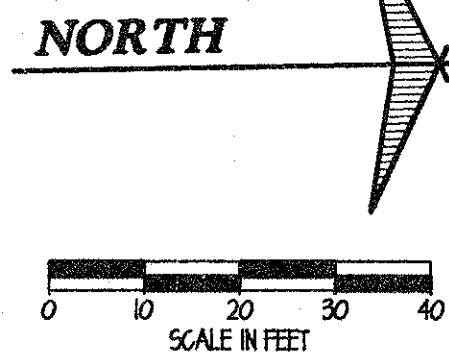


BENCH MARK:
TOP X ON TOP SW BOLT
AT BASE OF LIGHT POLE
STA. 188+29± RT.
ELEV. 635.45



SUBMISSIONS / REVISIONS

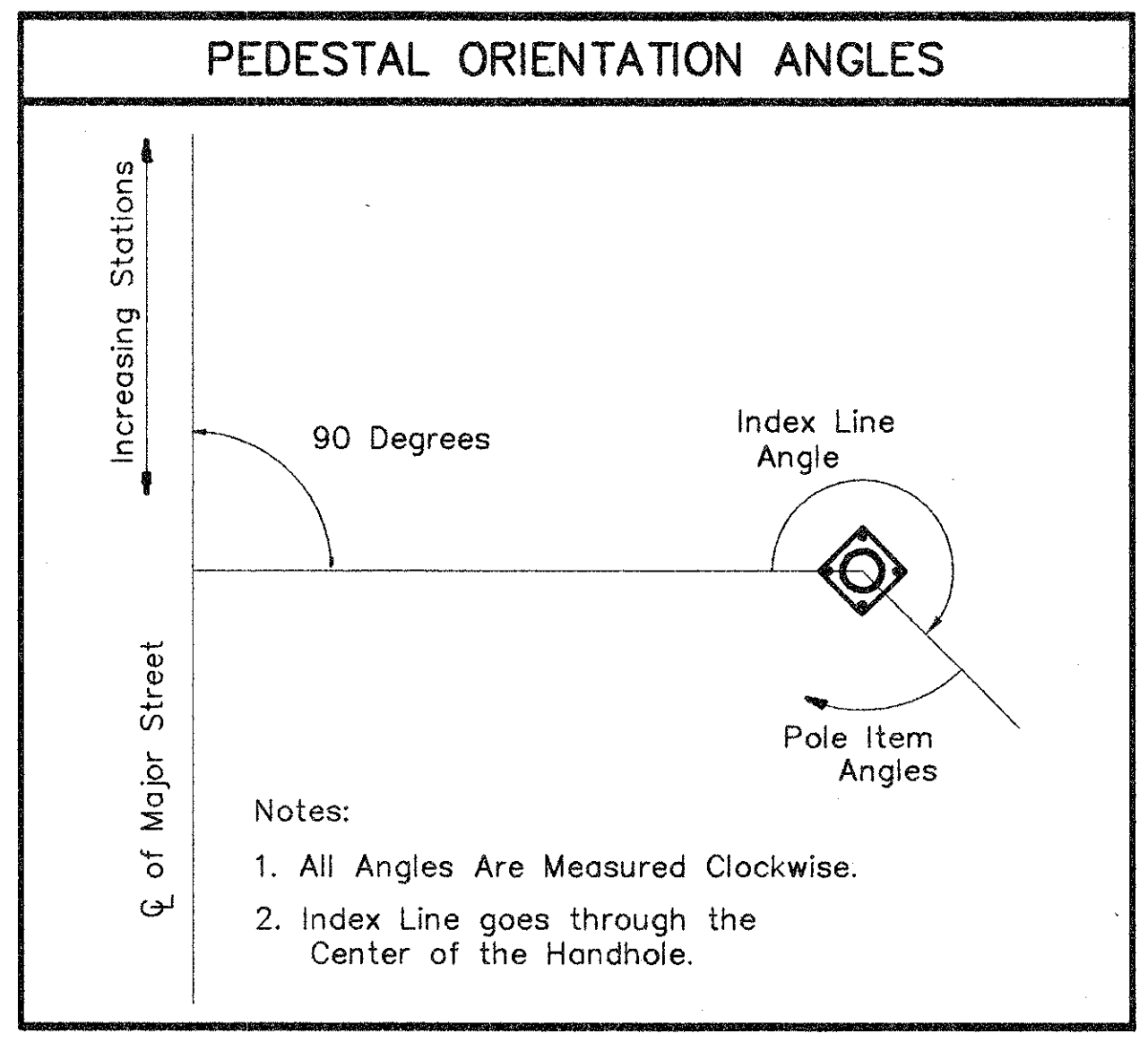
CENTER STREET (STATE ROUTE 615)
ROADWAY IMPROVEMENTS
SIGNAL PLAN
CENTER STREET/STATE ROUTE 2 WESTBOUND RAMPS
STA. 186+00 TO STA. 191+00

CT Consultants, Inc.
Engineers • Architects • Planners
Willoughby • Mentor • Columbus • North Canton • Youngstown

P2	P1	POLE No.
-	-	DESIGN No.
8'	8'	POLE HT.
189+21	188+59	STATION
54.5' RT	54.5' RT	OFFSET
90°	270°	HANDHOLE ORIENTATION ANGLE
270°	90°	PEDESTRIAN SIGNAL (1" BLIND COUPLING, 8" FROM BOTTOM OF POLE)
90°	270°	PEDESTRIAN PUSHBUTTON (3"-6" FROM BOTTOM OF POLE)

STA. 189+21, 54.5' RT
STA. 188+59, 54.5' RT
8' PEDESTAL, TRANSFORMER BASE
W/PEDESTRIAN SIGNAL HEAD & PUSHBUTTON

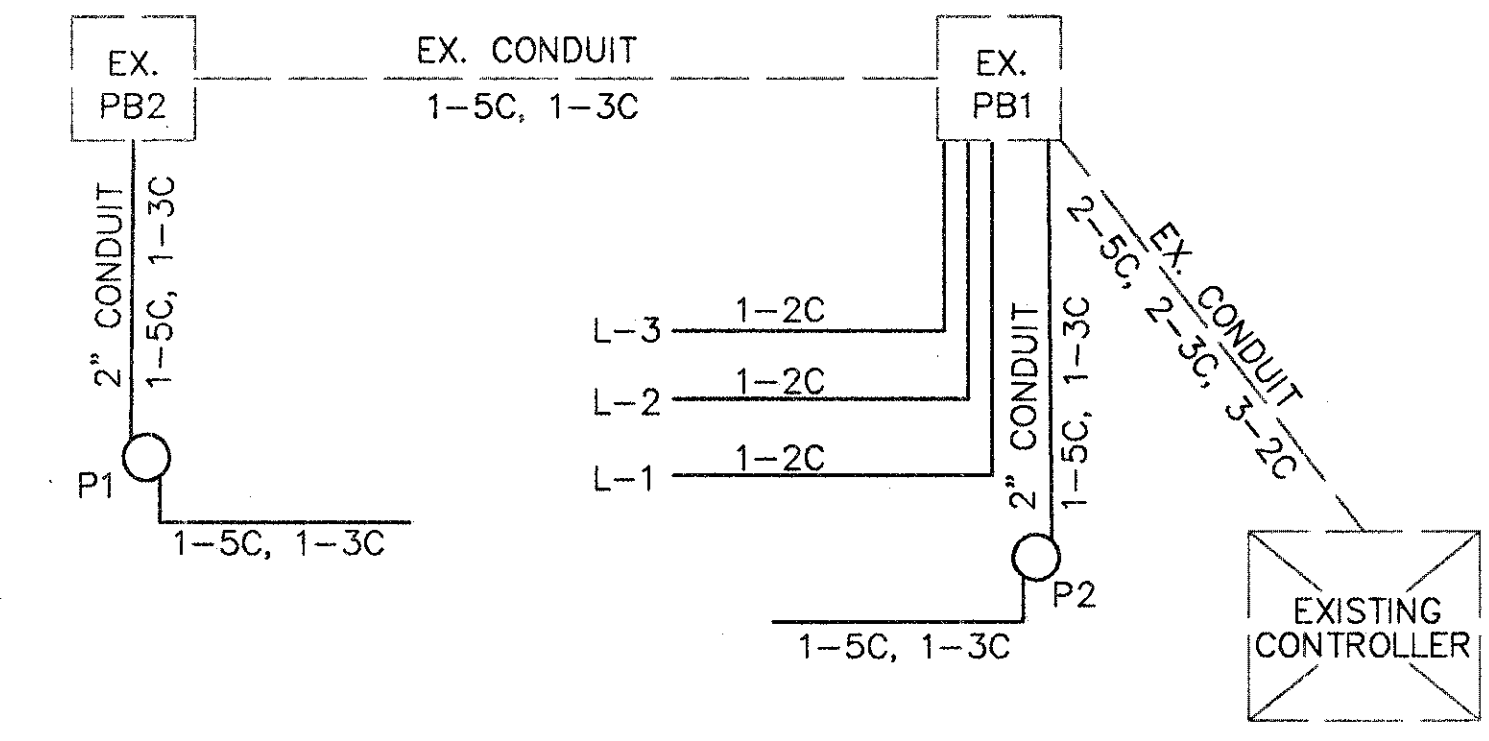
P1 PEDESTAL SUPPORT DETAIL



EXIST. PULL BOX: STA. 188+51, 46.5' RT
P1: STA. 188+59, 54.5' RT
8' PEDESTAL W/TRANSFORMER BASE
PED. SIGNAL HEAD AND PUSHBUTTON

EXIST. PULL BOX: STA. 189+23, 49' RT
P2: STA. 189+21, 54.5' RT
8' PEDESTAL W/TRANSFORMER BASE
PED. SIGNAL HEAD AND PUSHBUTTON

EXIST. CONTROLLER: STA. 189+26, 53.5' RT



WIRING DIAGRAM
NO SCALE

LOOP	SIZE	TURNS	MODE	DELAY	PHASE	REMARK	INHIBITED DELAY	LOCATION 1st FRONT CORNER	LOCATION 2nd FRONT CORNER
L-1	5X25	2	PRESENCE	YES	-	-	-	STA. 188+71.5, 60' RT	STA. 188+76.5, 60' RT
L-2	5X25	2	PRESENCE	YES	-	-	-	STA. 188+83, 60' RT	STA. 188+88, 60' RT
L-3	5X25	2	PRESENCE	YES	-	-	-	STA. 188+95, 60' RT	STA. 189+00, 60' RT

LOOP DETECTOR CHART

COPYRIGHT - DATE: 08-02-99, CT CONSULTANTS INC. ALL RIGHTS RESERVED. DRAWING: P10112-00

DATE: AUGUST 03, 1999
DRAWN BY: T.F.B.
CHECKED BY: A.E.P.
APPROVED BY: L.M.H.
SCALE: 1" = 20'
HOR. 1" = 5'
VERT. 1" = 5'
CONTRACT No. 98387
SHEET NO. 91 OF 103