

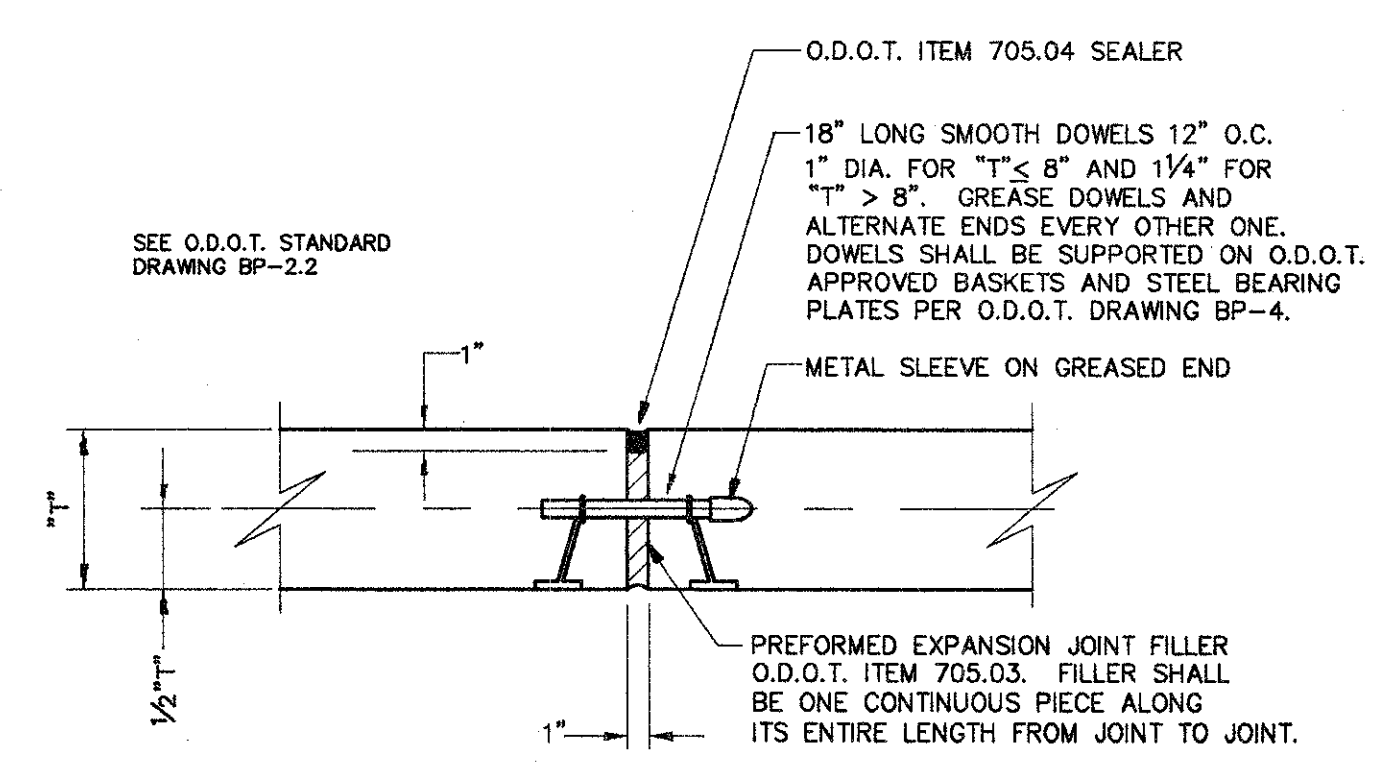


SUBMISSIONS / REVISIONS	

**CENTER STREET (STATE ROUTE 615)  
ROADWAY IMPROVEMENTS  
MISCELLANEOUS DETAILS**

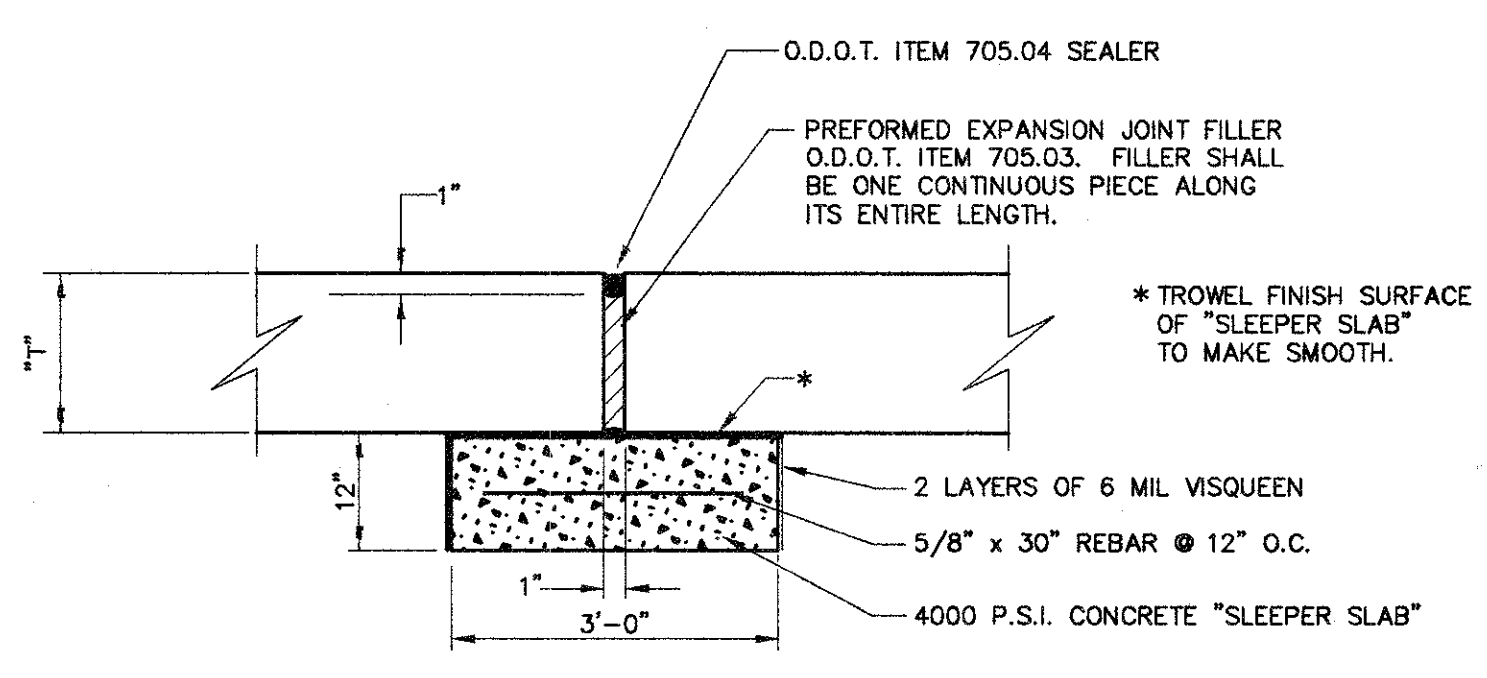
**CT Consultants, Inc.**  
Engineers • Architects • Planners  
Willoughby • Mentor • Columbus • North Canton • Youngstown

DATE:	APRIL 1999
DRAWN BY:	J.J.C.
CHECKED BY:	C.C.H.
APPROVED BY:	
HOR. SCALE:	1" = 20'
VERT. SCALE:	
CONTRACT NO.:	
<b>98387</b>	
SHEET NO.:	OF
<b>79</b>	<b>103</b>



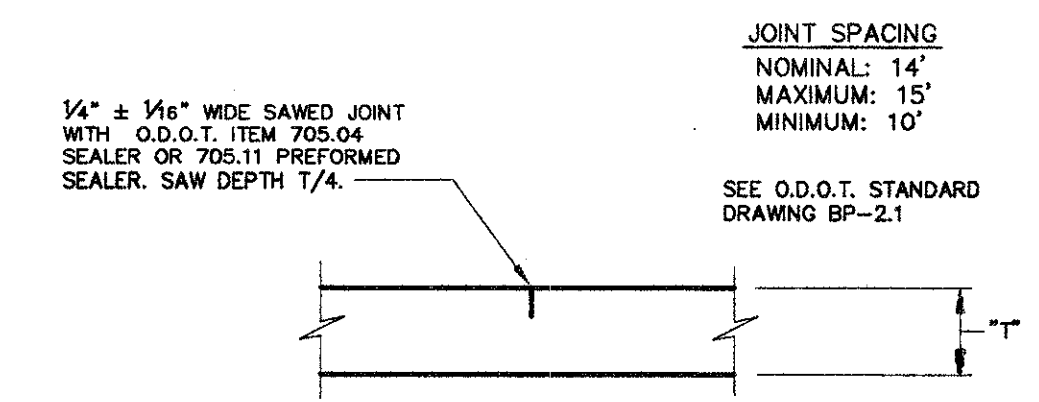
NOTE: EXPANSION JOINTS SHALL BE USED AT ALL INTERSECTIONS, AT THE BEGINNING AND END OF ALL CURVES LESS THAN 500 FEET RADIUS, AT A MINIMUM OF EVERY 500 FEET, AND WHERE DESIGNATED ON THE PLANS OR BY THE ENGINEER.

**EXPANSION JOINT**

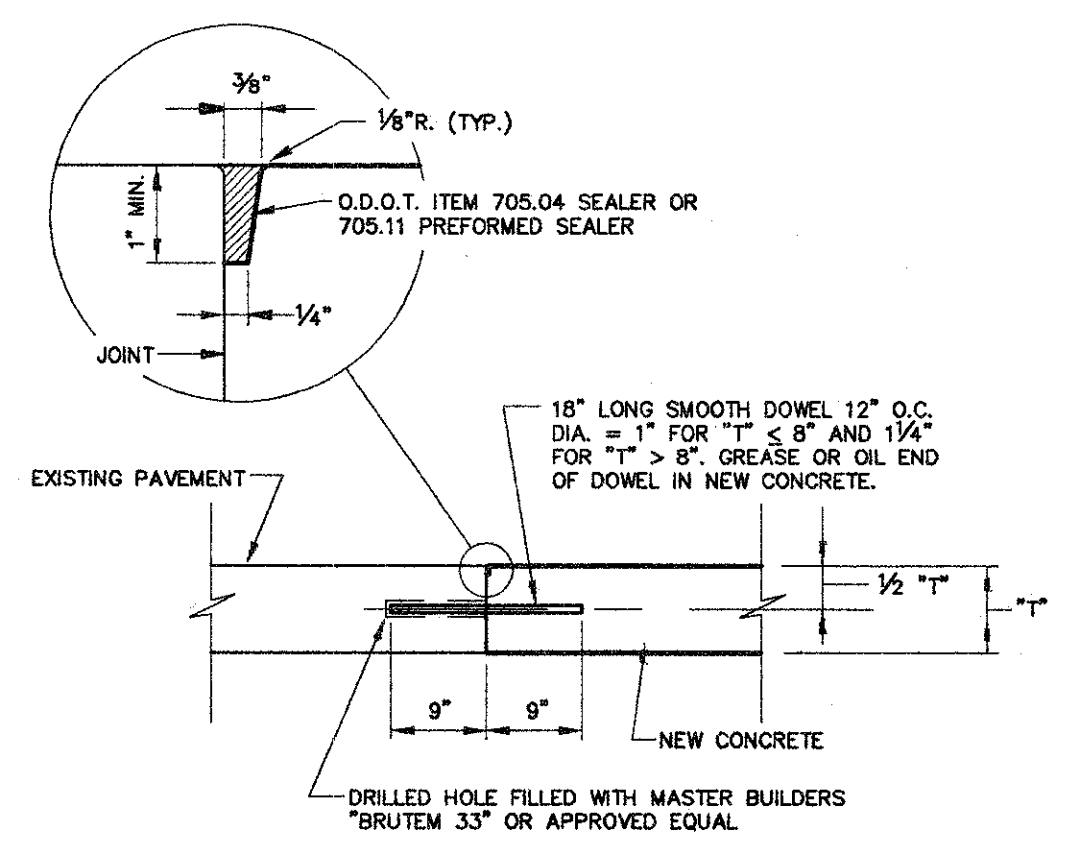


NOTE: EXPANSION JOINTS SHALL BE USED AT ALL INTERSECTIONS, AT THE BEGINNING AND END OF ALL CURVES LESS THAN 500 FEET RADIUS, AT A MINIMUM OF EVERY 500 FEET, AND WHERE DESIGNATED ON THE PLANS OR BY THE ENGINEER.

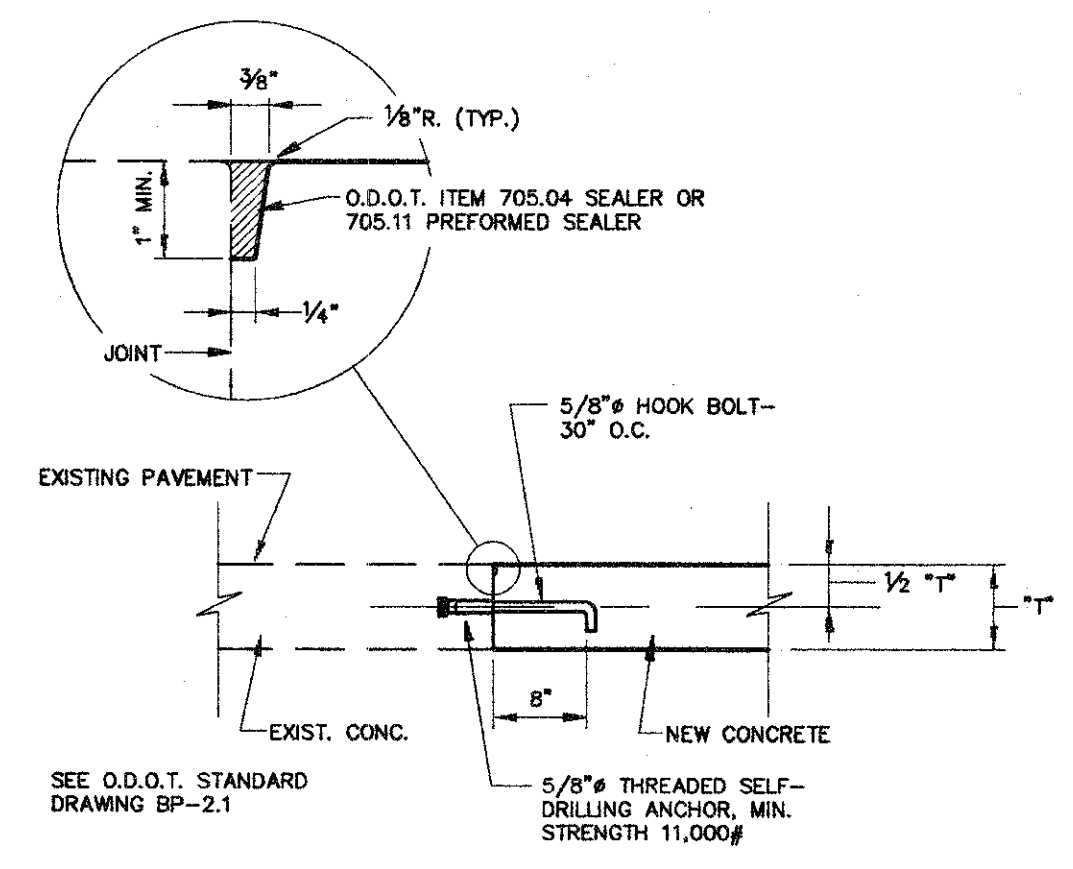
**EXPANSION JOINT**



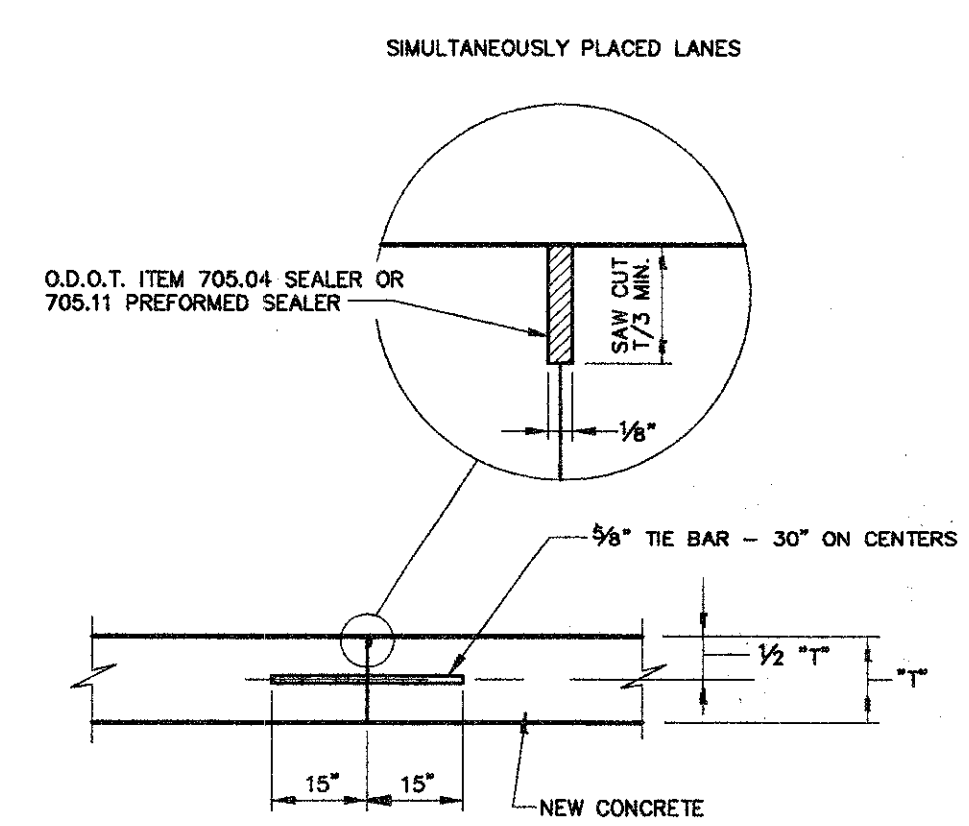
**CONTRACTION JOINT  
(FOR 452 PAVEMENTS)**



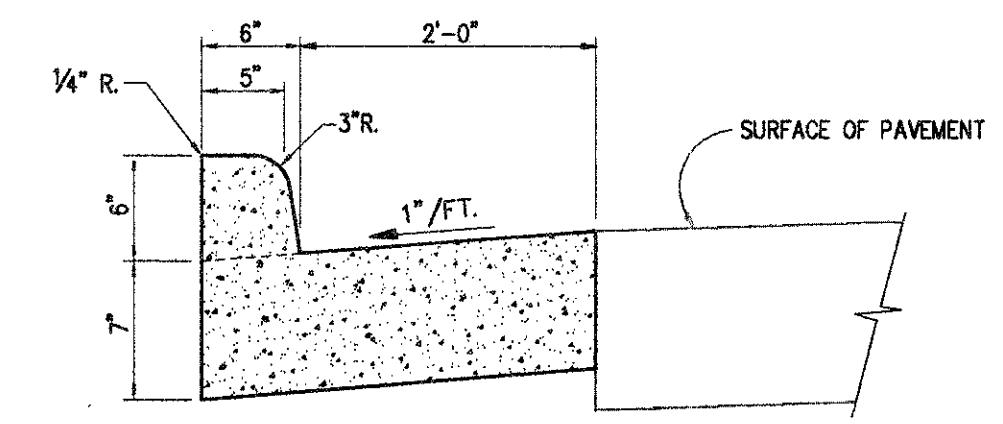
**TRANSVERSE BUTT JOINT**



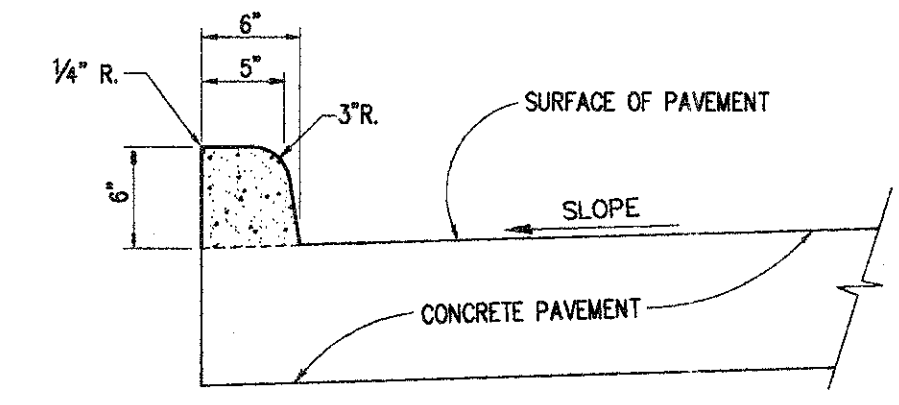
(ABUTTING EXISTING PAVEMENT)  
**LONGITUDINAL BUTT JOINT**



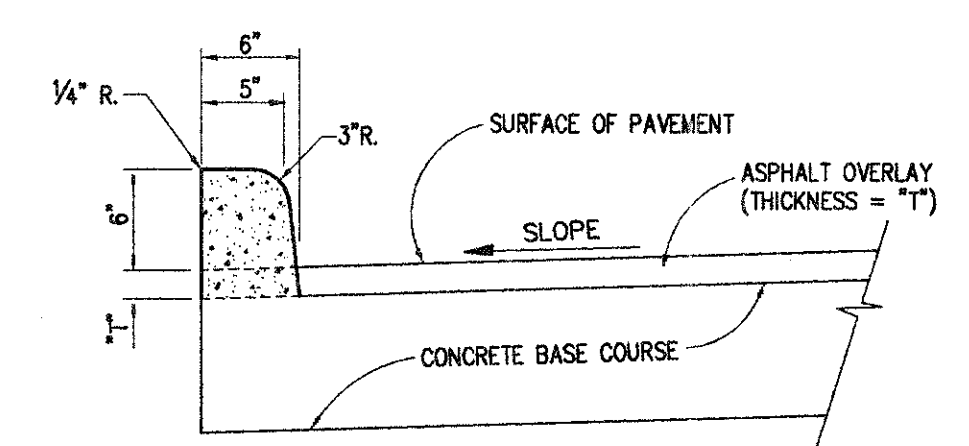
NOTE: SEE O.D.O.T. STANDARD DRAWING BP-2.1 FOR ALTERNATE BUTT JOINT DETAILS.  
  
(NEW CONSTRUCTION)  
**LONGITUDINAL BUTT JOINT**



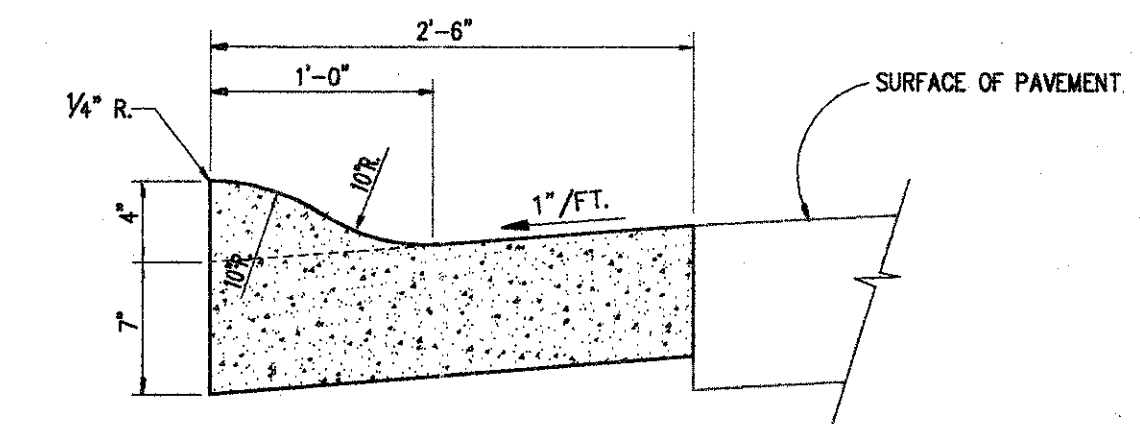
**TYPE 2 CURB & GUTTER  
(VERTICAL CURB)**



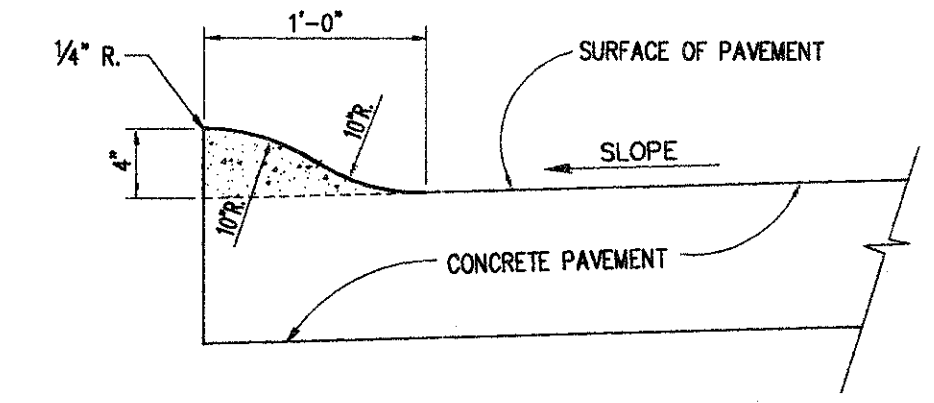
**TYPE 2-A CURB  
(VERTICAL CURB)**



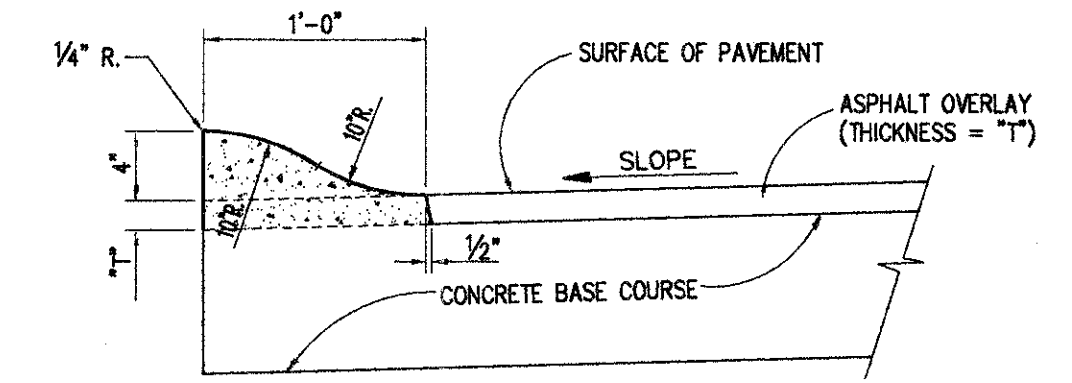
**TYPE 2-B CURB  
(VERTICAL CURB)**



**TYPE 3 CURB & GUTTER  
(ROLL CURB)**



**TYPE 3-A CURB  
(ROLL CURB)**



**TYPE 3-B CURB  
(ROLL CURB)**

COPYRIGHT - DATE: 07-29-99 12:45: CT CONSULTANTS INC. H:\9898\98387\98387.DWG. PLOT: 11-20