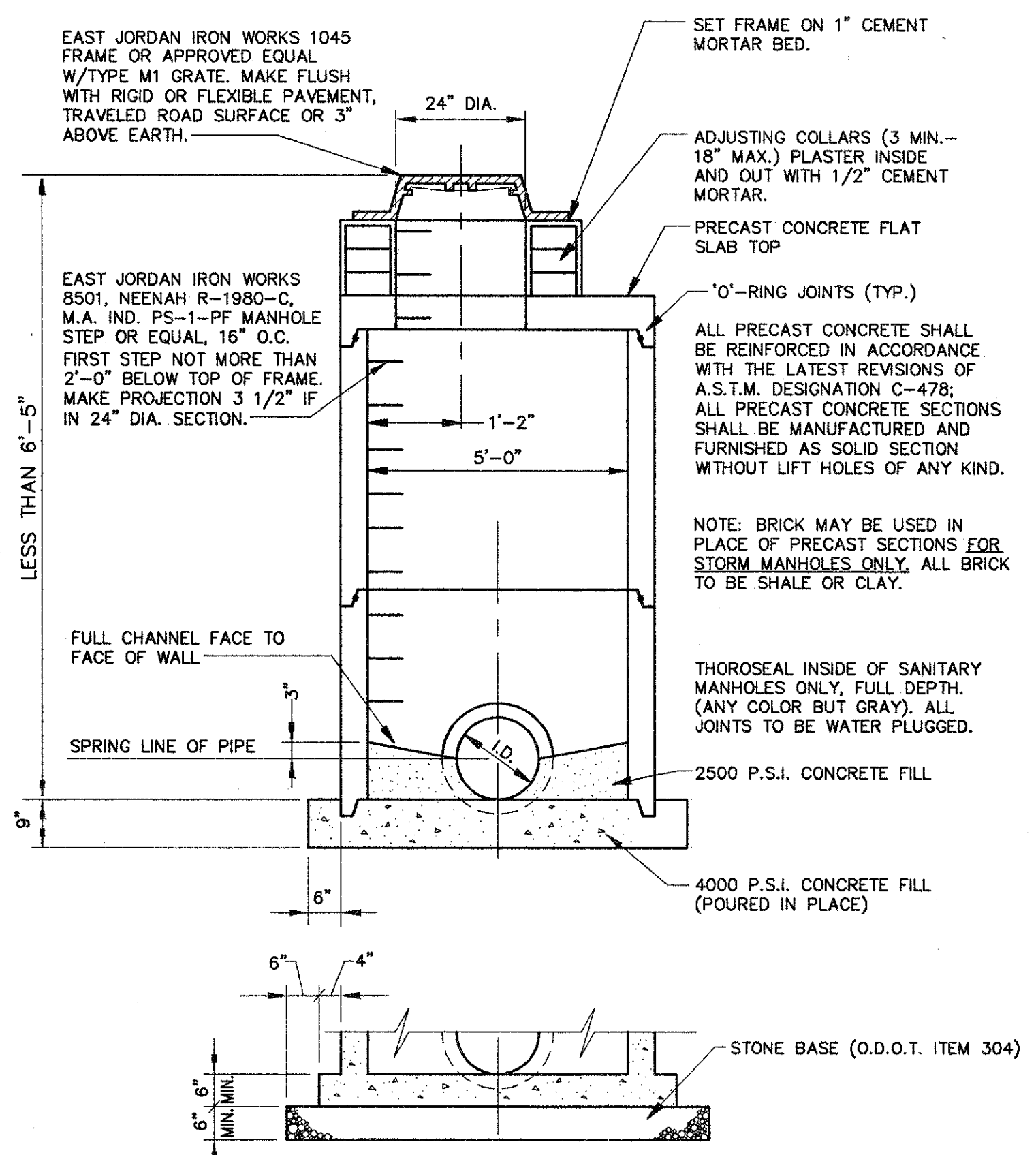


NO.	DATE	DESCRIPTION

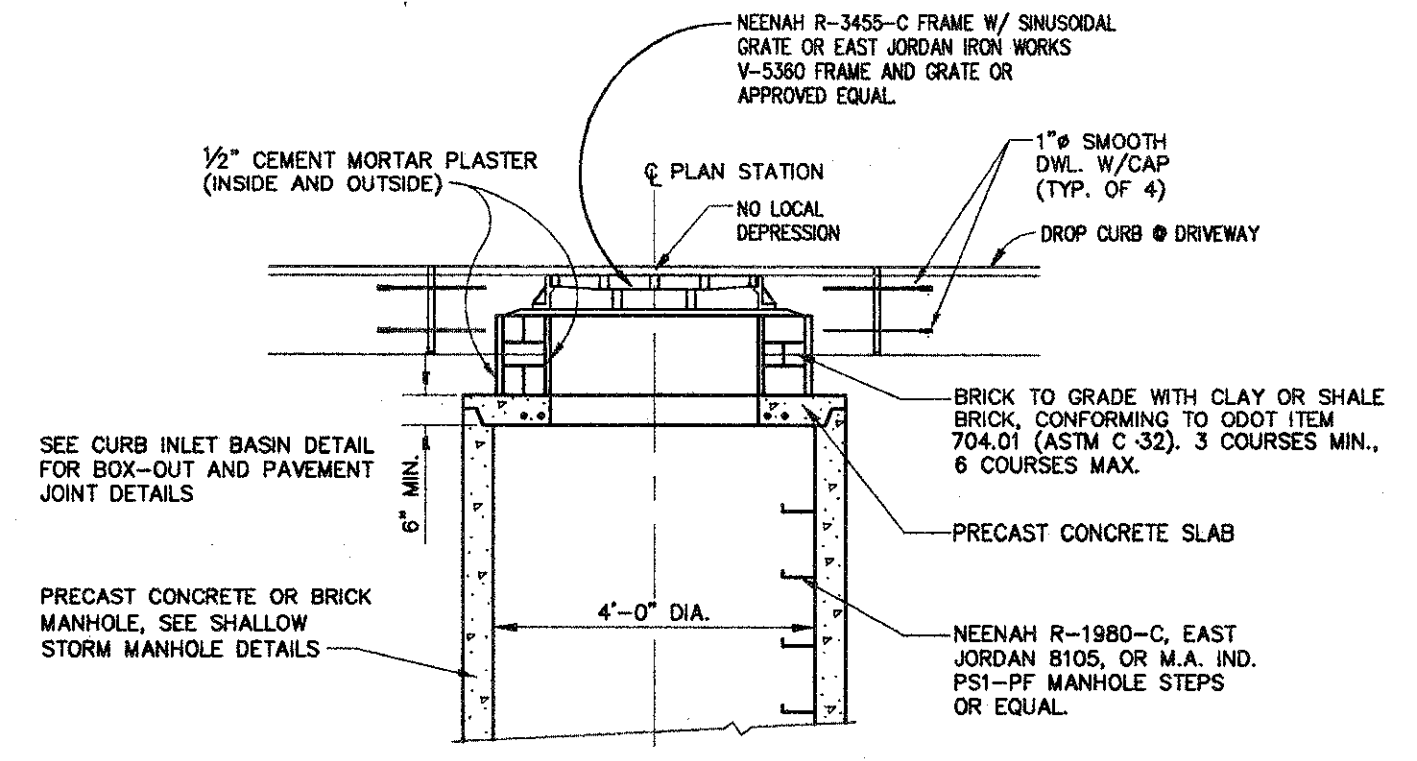
**CENTER STREET (STATE ROUTE 615)  
ROADWAY IMPROVEMENTS  
MISCELLANEOUS DETAILS**

**CT Consultants, Inc.**  
Engineers • Architects • Planners  
Willoughby • Mentor • Columbus • North Canton • Youngstown

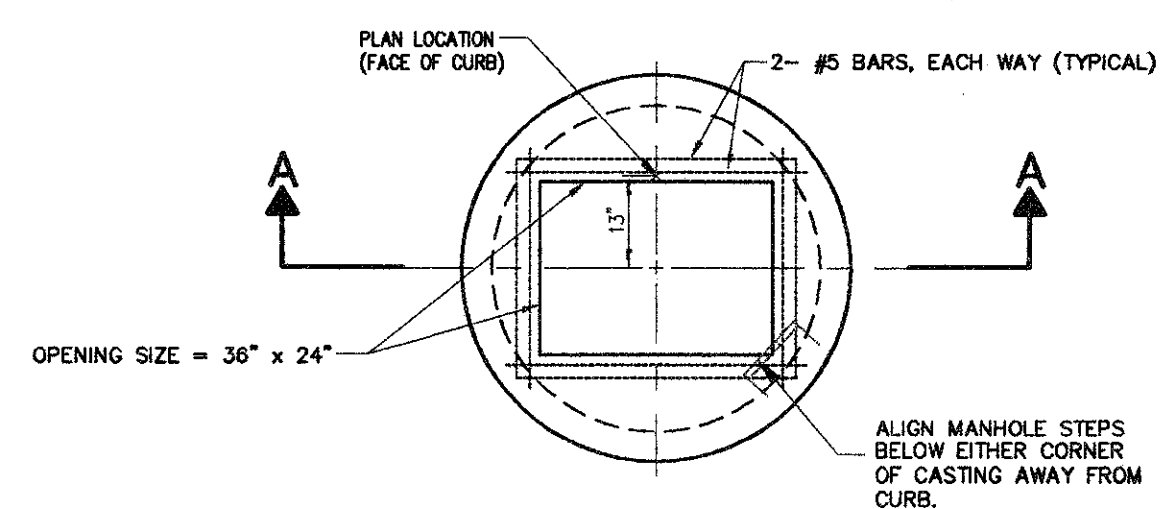
DATE:	APRIL, 1999
DRAWN BY:	J.J.C.
CHECKED BY:	C.C.H.
APPROVED BY:	
HOR. SCALE:	1" = 20'
VERT. SCALE:	
CONTRACT NO.:	98387
SHEET NO.:	76
OF	103



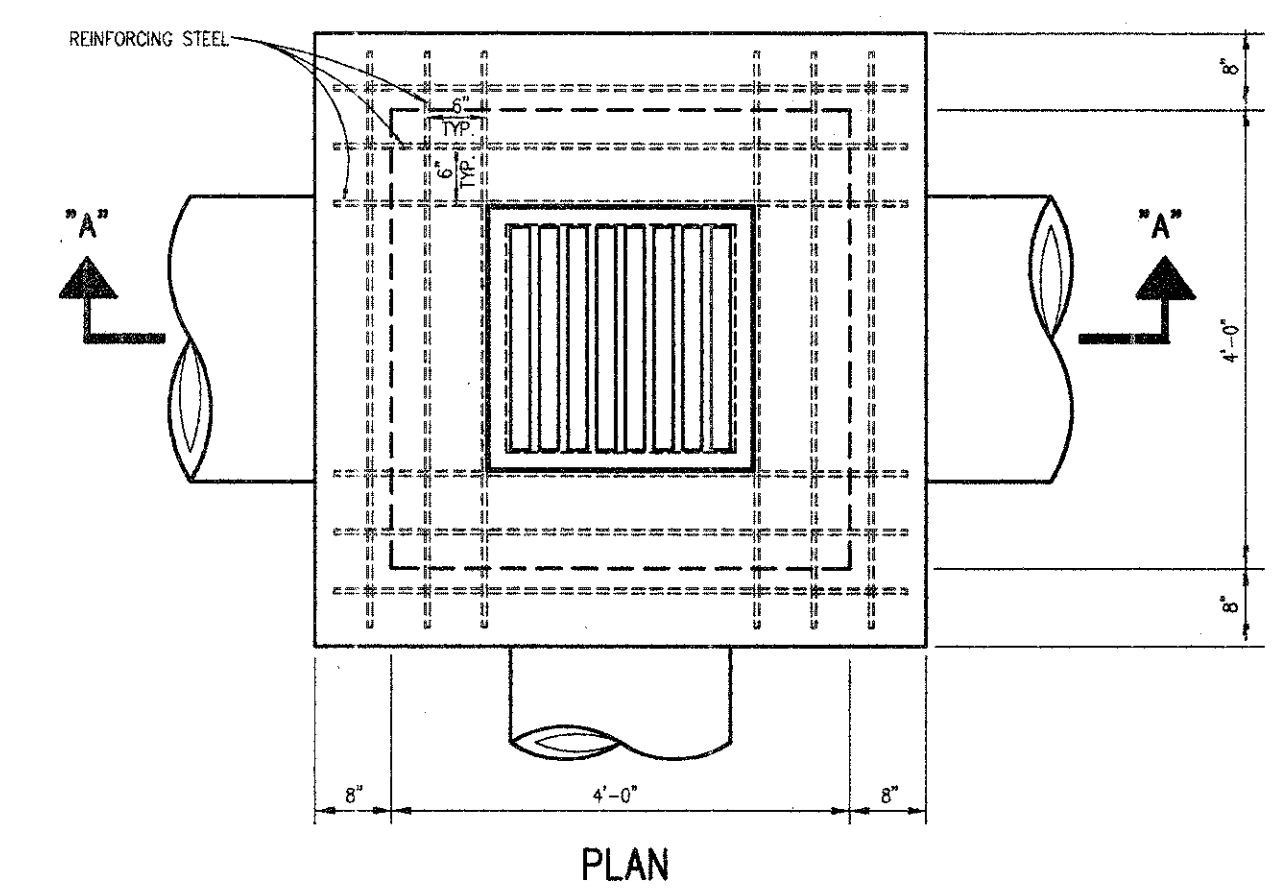
ALTERNATE PRECAST MANHOLE BASE  
SHALLOW STORM MANHOLE



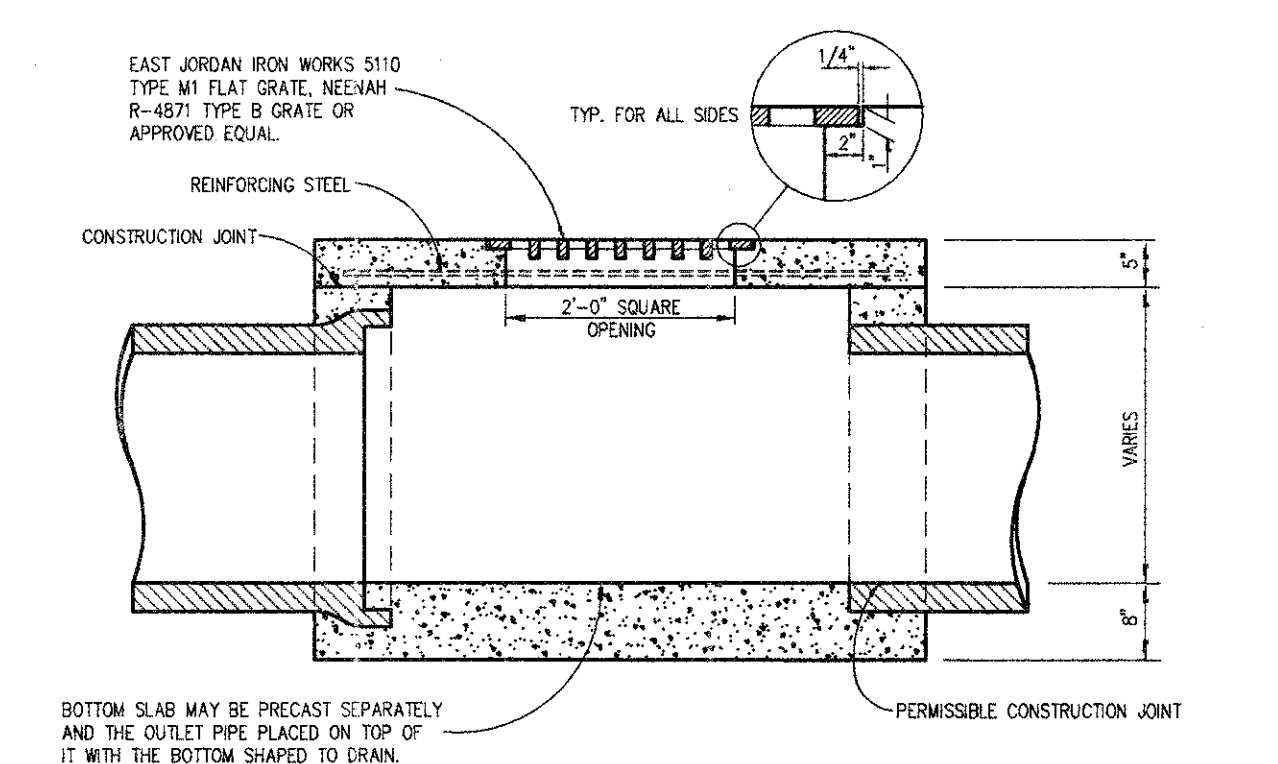
SECTION 'A-A'



PLAN VIEW  
CURB INLET BASIN MANHOLE



PLAN



SECTION "A-A"

CATCH BASIN CB-2-4

**NOTES**

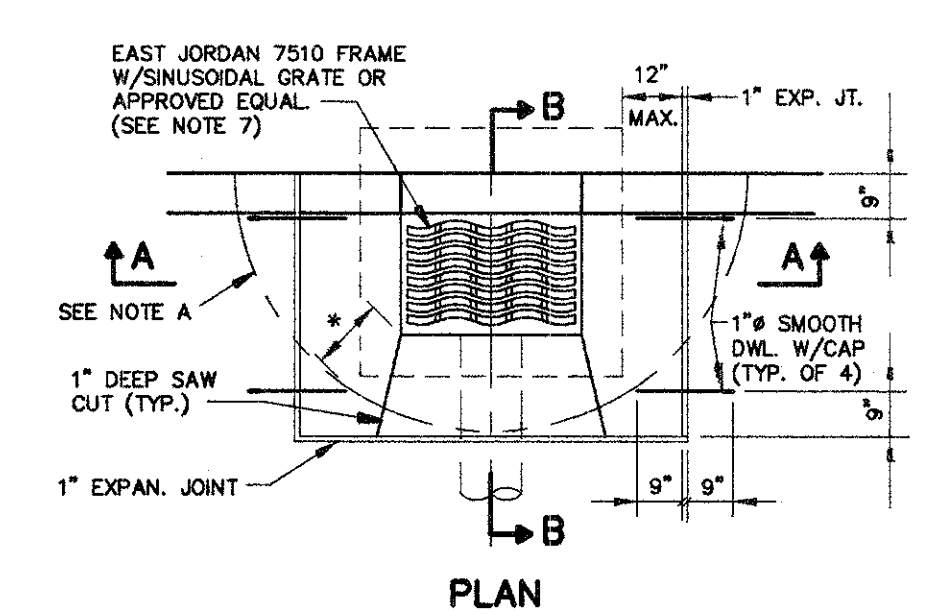
BRICK, CONCRETE BLOCK OR CAST-IN-PLACE WALLS SHALL HAVE A NOMINAL THICKNESS OF 8 INCHES. PRECAST WALLS SHALL HAVE A MINIMUM THICKNESS OF 6 INCHES AND BE REINFORCED SUFFICIENTLY TO PERMIT SHIPPING AND HANDLING WITHOUT DAMAGE.

CONCRETE, CAST-IN-PLACE, TO BE CLASS C. ALL PRECAST CONCRETE SHALL MEET THE REQUIREMENTS OF 706.13.

REINFORCING IN THE TOP TO BE NO. 4 BARS, 6" CENTER TO CENTER (12 BARS TOTAL).

OPENINGS FOR PIPES SHALL BE O.D. +2" WHEN PREFABRICATED OR FIELD CUT.

LOCATION AND ELEVATION WHEN GIVEN IN THE PLANS IS TOP CENTER OF THE GRATE.

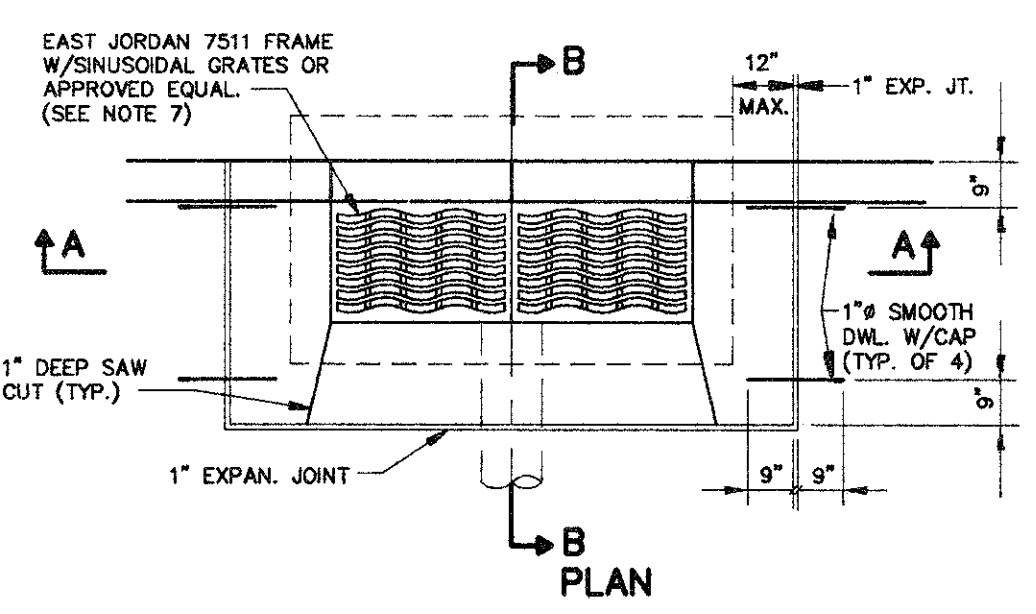


PLAN

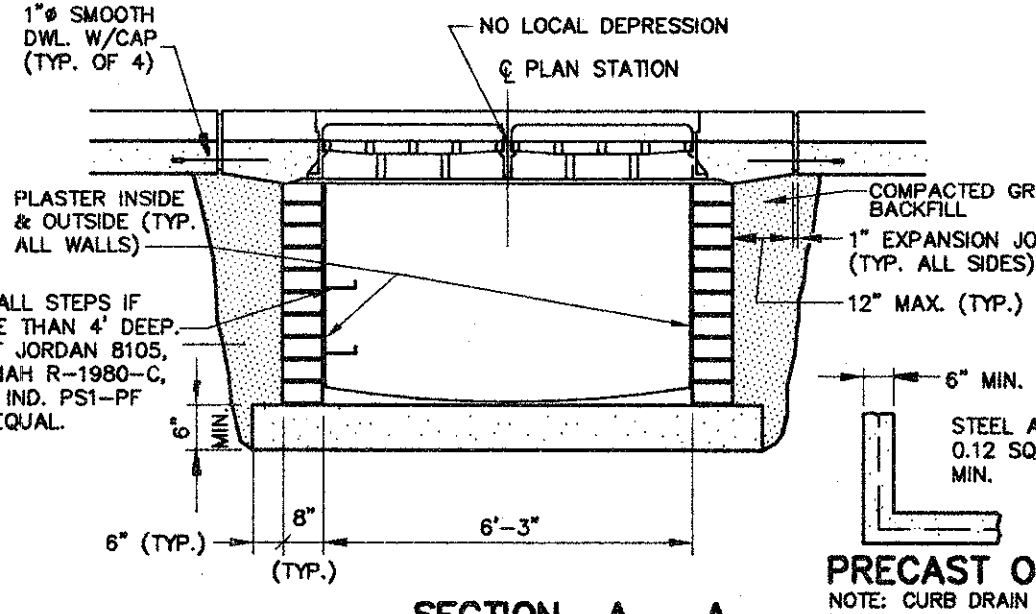
**NOTE A**  
ALTERNATE INLET BOX-OUT TO BE USED WHERE RECTANGULAR BOX-OUT DOES NOT FIT PAVEMENT JOINT PATTERN OR WHERE DIRECTED BY ENGINEER. JOINT TO BE A SMOOTH BUTT JOINT WITH 1" EXPANSION MATERIAL, DELETE SMOOTH DOWEL BARS AND CAPS. \* = 12" TO 24", AS DIRECTED BY ENGINEER.

**GENERAL NOTES:**

- 1) ALL WORK TO CONFORM TO O.D.O.T. ITEM 604.
- 2) ALL BRICK SHALL BE CLAY OR SHALE BRICK CONFORMING TO O.D.O.T. ITEM 704.01 (A.S.T.M. C32), UNLESS APPROVED IN WRITING BY THE ENGINEER.
- 3) IF PRECAST UNITS ARE USED, THE CONTRACTOR SHALL PROVIDE SHOP DRAWINGS TO THE ENGINEER FOR APPROVAL. PRECAST UNITS SHALL CONFORM TO O.D.O.T. ITEM 705.13.
- 4) PAVEMENT CONCRETE WITHIN BOXOUT SHALL CONFORM TO O.D.O.T. 499, CLASS S 5000 P.S.I. WITH RETARDER. CONCRETE FOR BASE SHALL BE 4000 P.S.I.
- 5) THE ENTIRE AREA AROUND THE BASIN SHALL BE BACKFILLED WITH O.D.O.T. ITEM 310.02, MECHANICALLY COMPACTED IN 4" LIFTS.
- 6) PRECAST UNITS SHALL BE SET ON 6" STONE BASE.
- 7) FOR STEEP SLOPE CONDITIONS USE EAST JORDAN 7030 FRAME WITH TYPE M6 GRATES.



PLAN

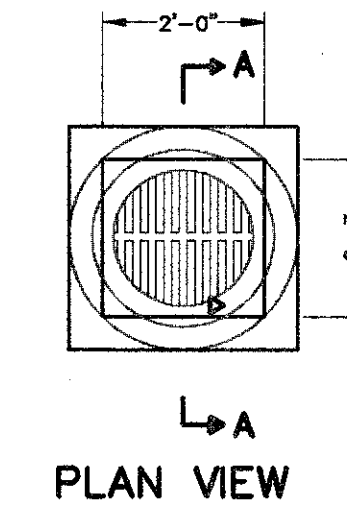


SECTION A - A

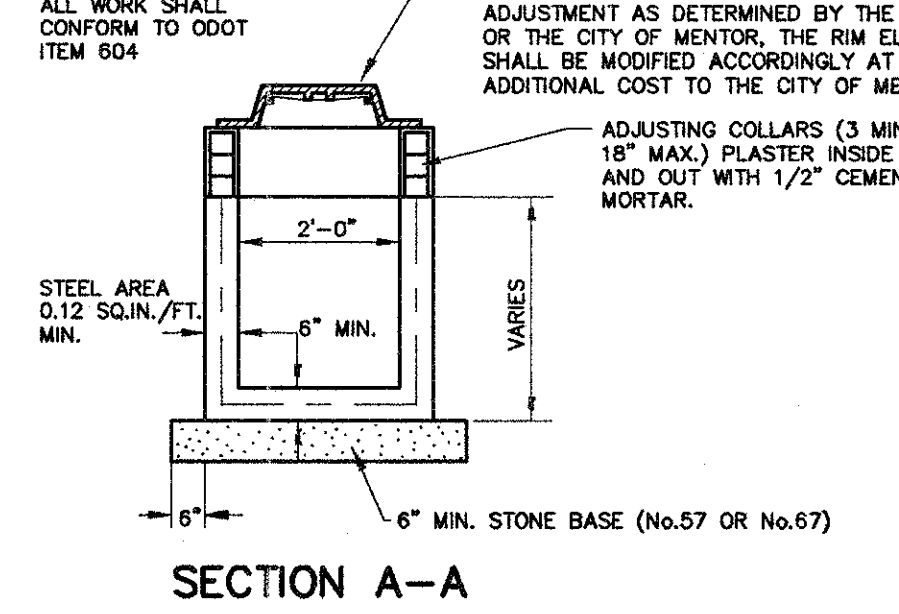
DOUBLE CURB INLET BASIN

**GENERAL NOTES:**

- 1) ALL WORK TO CONFORM TO O.D.O.T. ITEM 604.
- 2) ALL BRICK SHALL BE CLAY OR SHALE BRICK CONFORMING TO O.D.O.T. ITEM 704.01 (A.S.T.M. C32), UNLESS APPROVED IN WRITING BY THE ENGINEER.
- 3) IF PRECAST UNITS ARE USED, THE CONTRACTOR SHALL PROVIDE SHOP DRAWINGS TO THE ENGINEER FOR APPROVAL. PRECAST UNITS SHALL CONFORM TO O.D.O.T. ITEM 705.13.
- 4) PAVEMENT CONCRETE WITHIN BOXOUT SHALL CONFORM TO O.D.O.T. 499, CLASS S 5000 P.S.I. WITH RETARDER. CONCRETE FOR BASE SHALL BE 4000 P.S.I.
- 5) THE ENTIRE AREA AROUND THE BASIN SHALL BE BACKFILLED WITH O.D.O.T. ITEM 304.02, MECHANICALLY COMPACTED IN 4" LIFTS.
- 6) PRECAST UNITS SHALL BE SET ON 6" STONE BASE.
- 7) FOR STEEP SLOPE CONDITIONS USE EAST JORDAN 7031 FRAME WITH TYPE M6 GRATES.

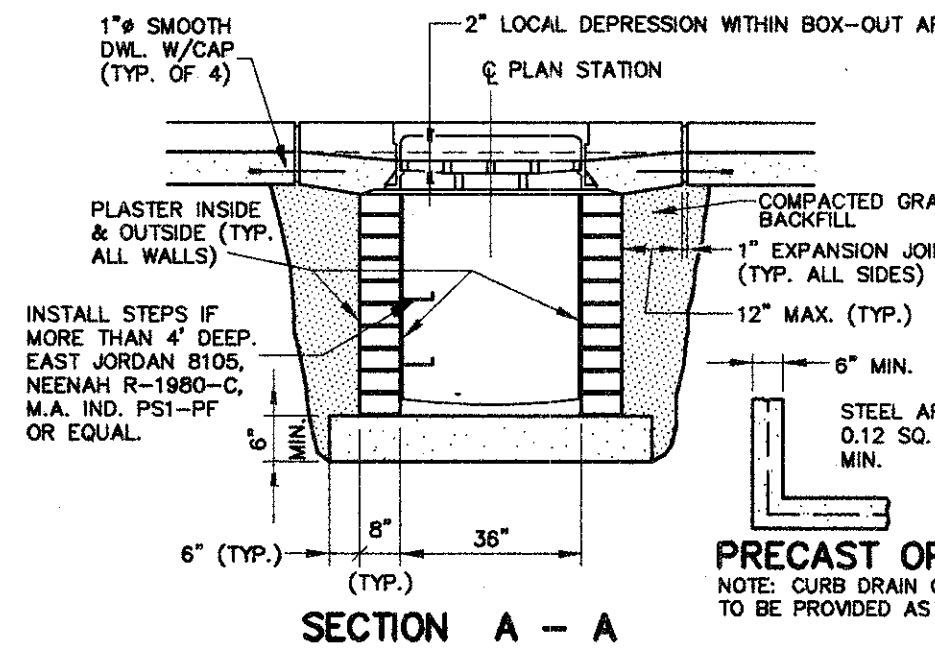


PLAN VIEW



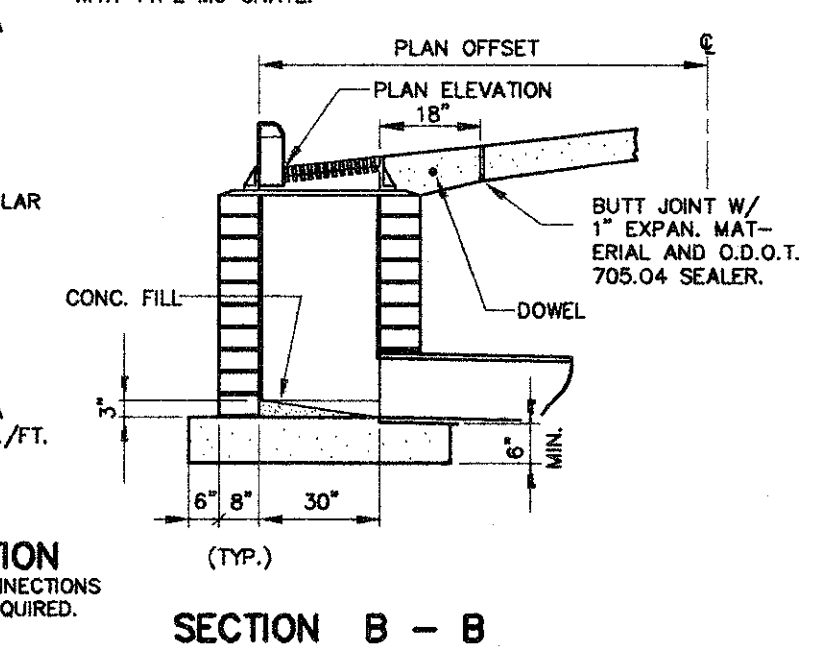
SECTION A-A

DITCH INLET BASIN

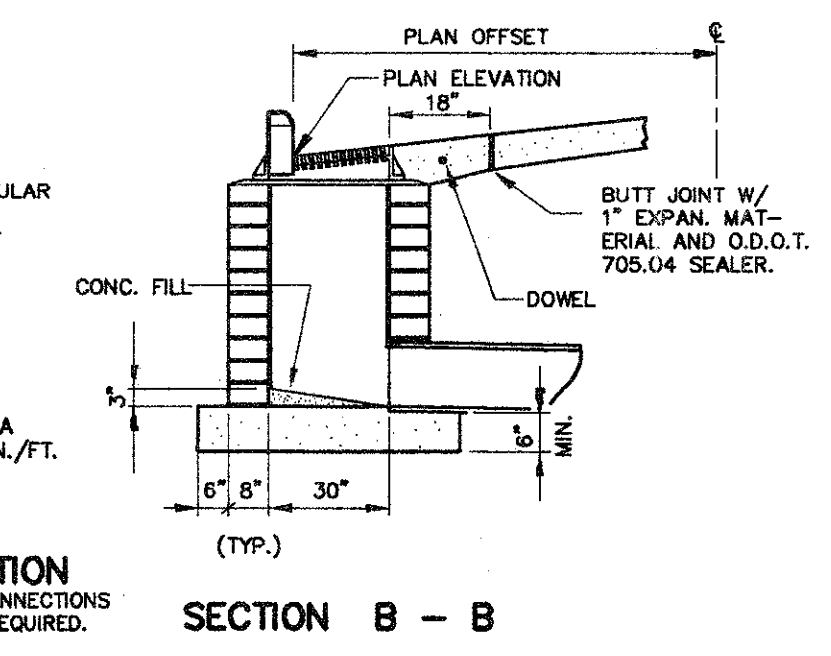


SECTION A - A

CURB INLET BASIN



SECTION B - B



SECTION B - B

DOUBLE CURB INLET BASIN

COPYRIGHT - DATE: 07-22-99 09:20, CT CONSULTANTS INC. H:\98387\98387\DRAWING\98387.DWG PLOT#20