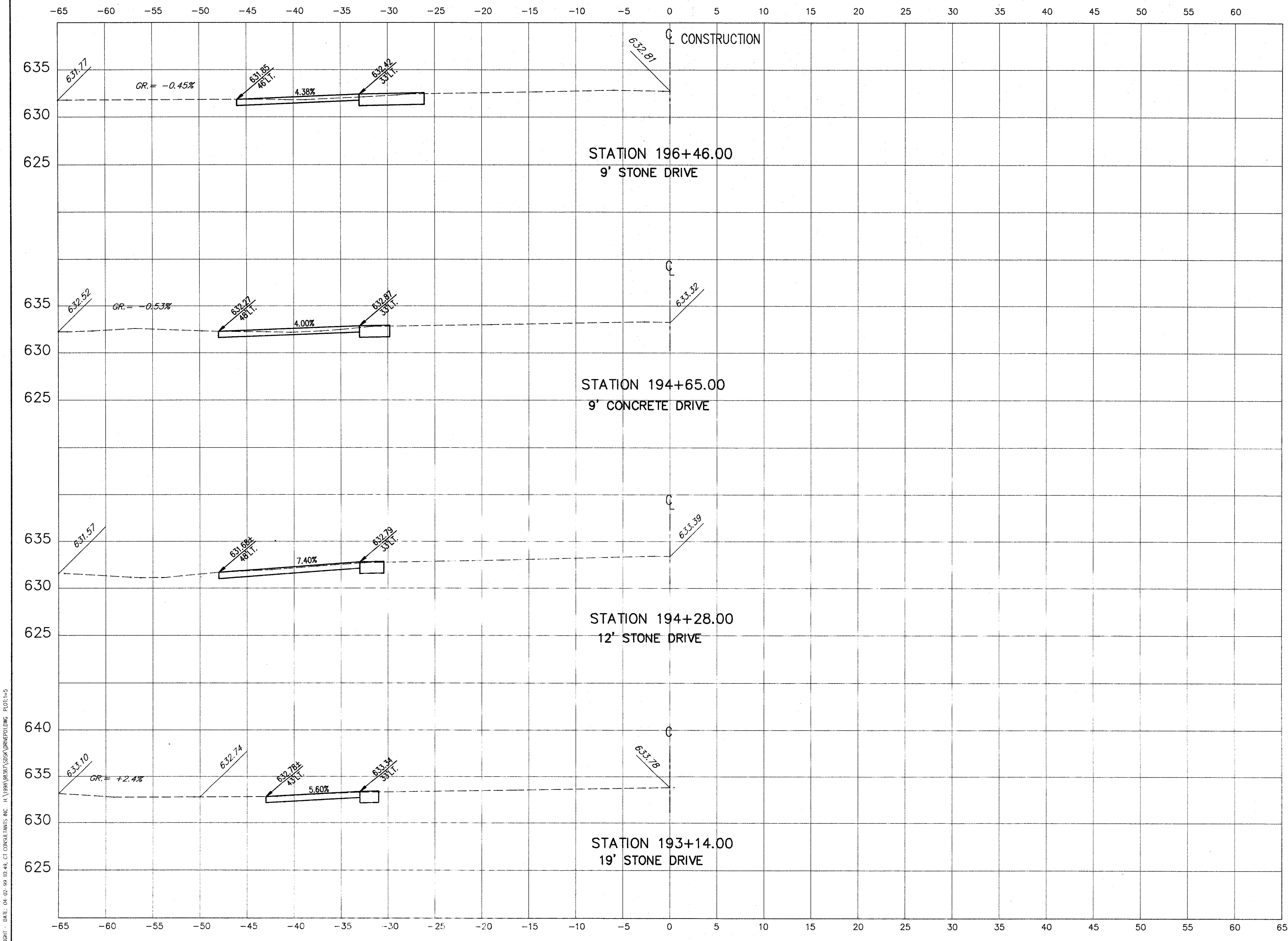


SUBMISSIONS / REVISIONS

**CENTER STREET (STATE ROUTE 615)  
 ROADWAY IMPROVEMENTS  
 CENTER STREET  
 DRIVE PROFILES  
 STA. 193+14.00 TO STA. 196+46.00**

**CT Consultants, Inc.**  
 Engineers • Architects • Planners  
Willoughby • Mentor • Columbus • North Canton • Youngstown

DATE:	APRIL 1992
DRAWN BY:	J.J.C.
CHECKED BY:	C.C.H.
APPROVED BY:	
SCALE:	
HOR:	1" = 5'
VERT:	1" = 5'
CONTRACT NO.:	
<b>98387</b>	
SHEET NO.:	OF
<b>66</b>	<b>103</b>



COPYRIGHT © DATE: 04-02-92 10:48 CT CONSULTANTS, INC. H:\98387\DRIVE\DRIVE\DWG PLOT1-5