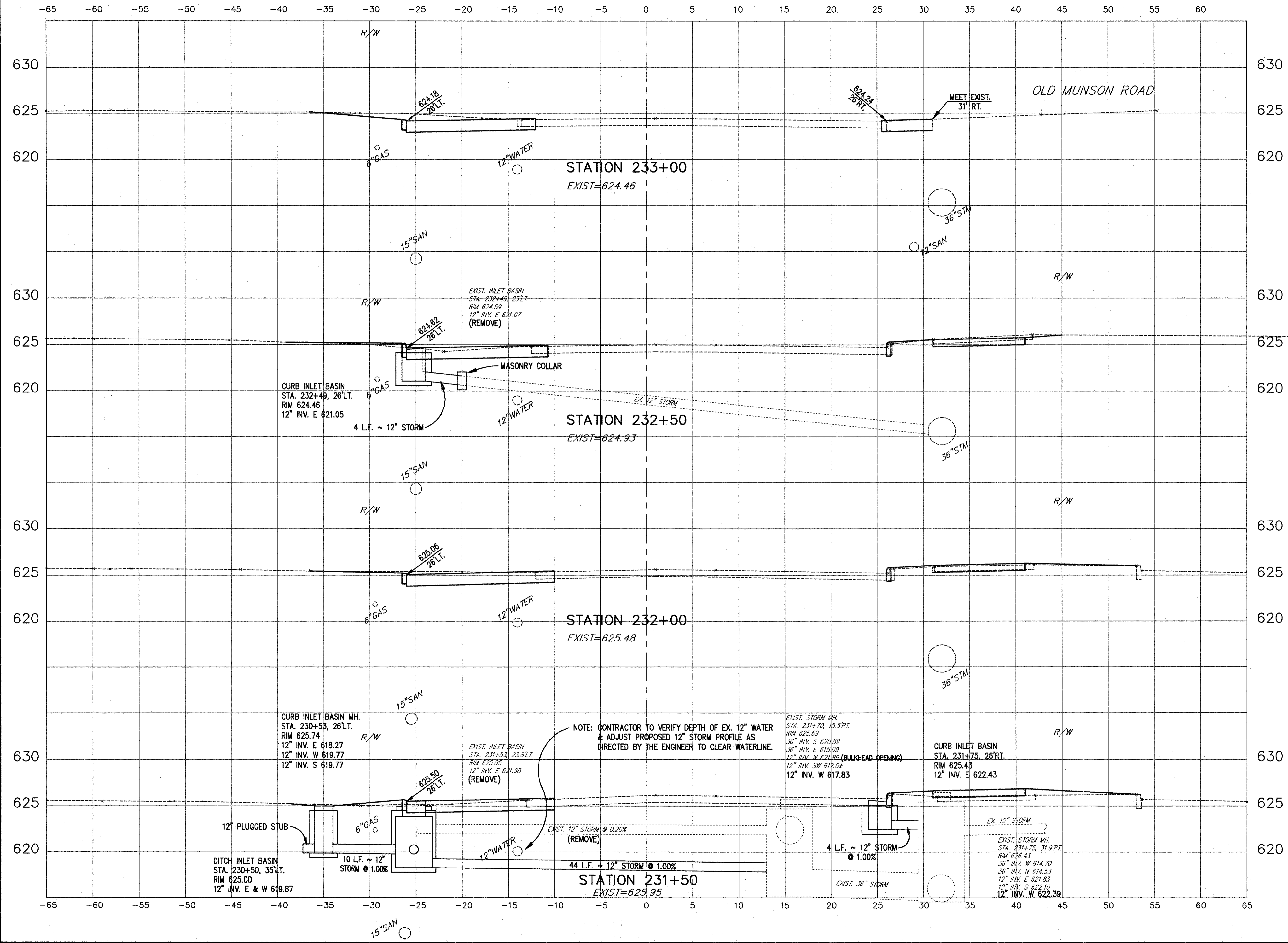


SUBMISSIONS / REVISIONS	

**CENTER STREET (STATE ROUTE 615)
ROADWAY IMPROVEMENTS
CENTER STREET
CROSS-SECTIONS
STA. 231+50 TO STA. 233+00**

CT Consultants, Inc.
Engineers • Architects • Planners
Willoughby • Mentor • Columbus • North Canton • Youngstown

DATE:	DECEMBER, 1998
DRAWN BY:	J.J.C.
CHECKED BY:	C.C.H.
APPROVED BY:	
SCALE:	
HOR:	1" = 5'
VERT:	1" = 5'
CONTRACT NO.	
98387	
SHEET NO.	OF
59	103



COPYRIGHT - DATE: 11-30-98 10:49: CT CONSULTANTS INC. H:\1998\98387\SDS\WBK722.DWG PLOT:1-5