

SUBMISSIONS / REVISIONS

**CENTER STREET (STATE ROUTE 615)
ROADWAY IMPROVEMENTS
CENTER STREET
CROSS-SECTIONS
STA. 211+50 TO STA. 213+00**

CT Consultants, Inc.
Engineers • Architects • Planners
Willoughby • Mentor • Columbus • North Canton • Youngstown

DATE: DECEMBER, 1998

DRAWN BY: J.J.C.

CHECKED BY: C.C.H.

APPROVED BY:

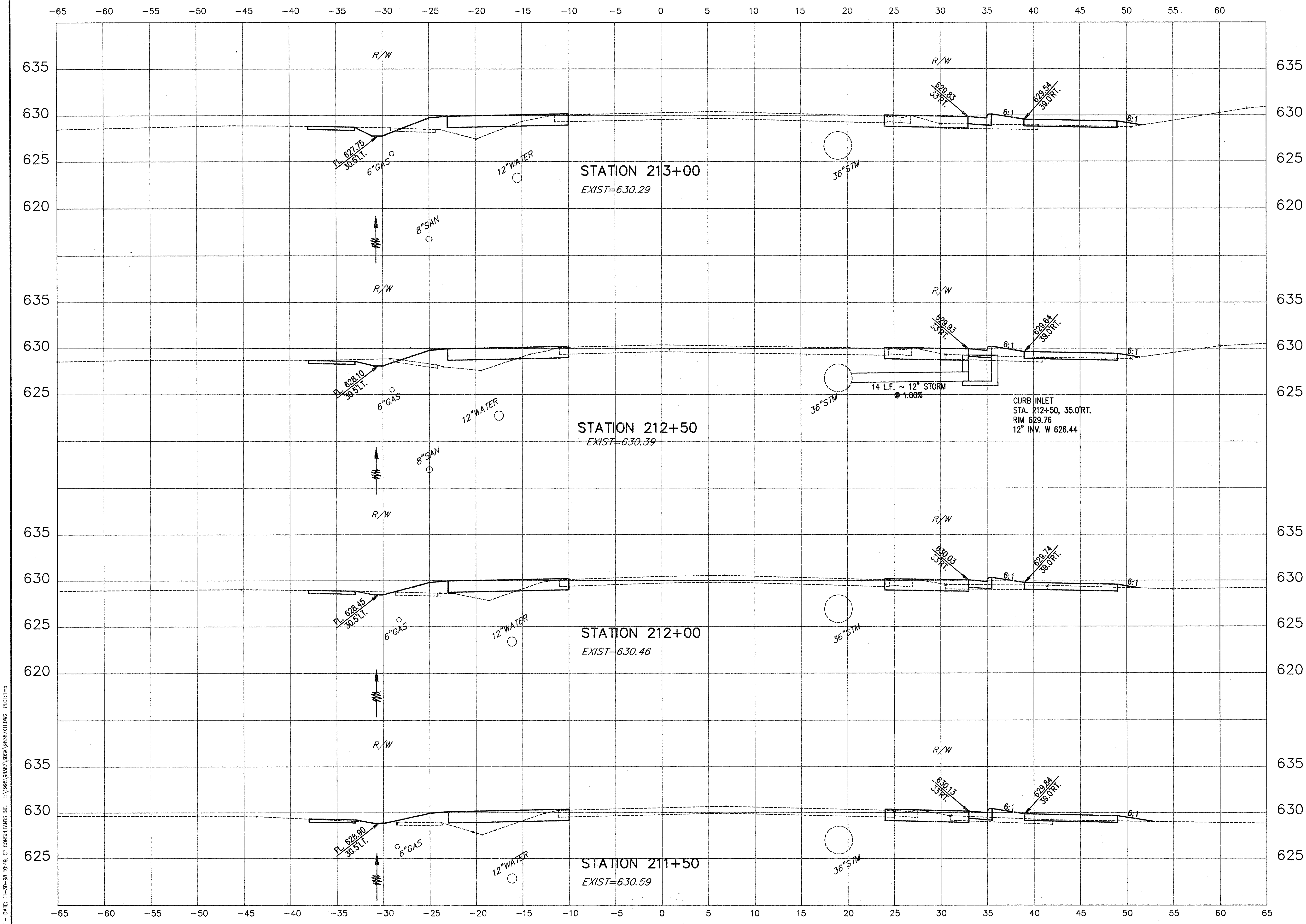
SCALE:
HOR. 1" = 5'
VERT. 1" = 5'

CONTRACT NO.

98387

SHEET NO. OF

49 103



COPYRIGHT - DATE: 11-30-98 10:49 CT CONSULTANTS INC. H:\1998\98387\SSK\98387.DWG PLOT:1=5