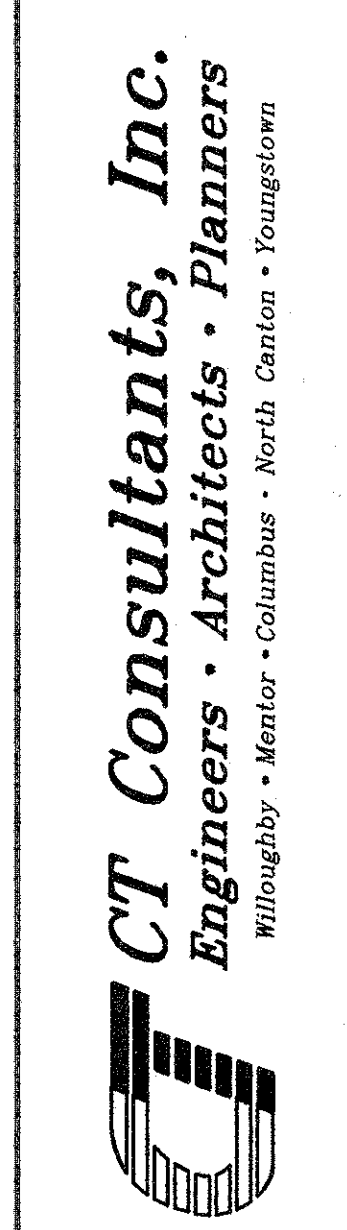
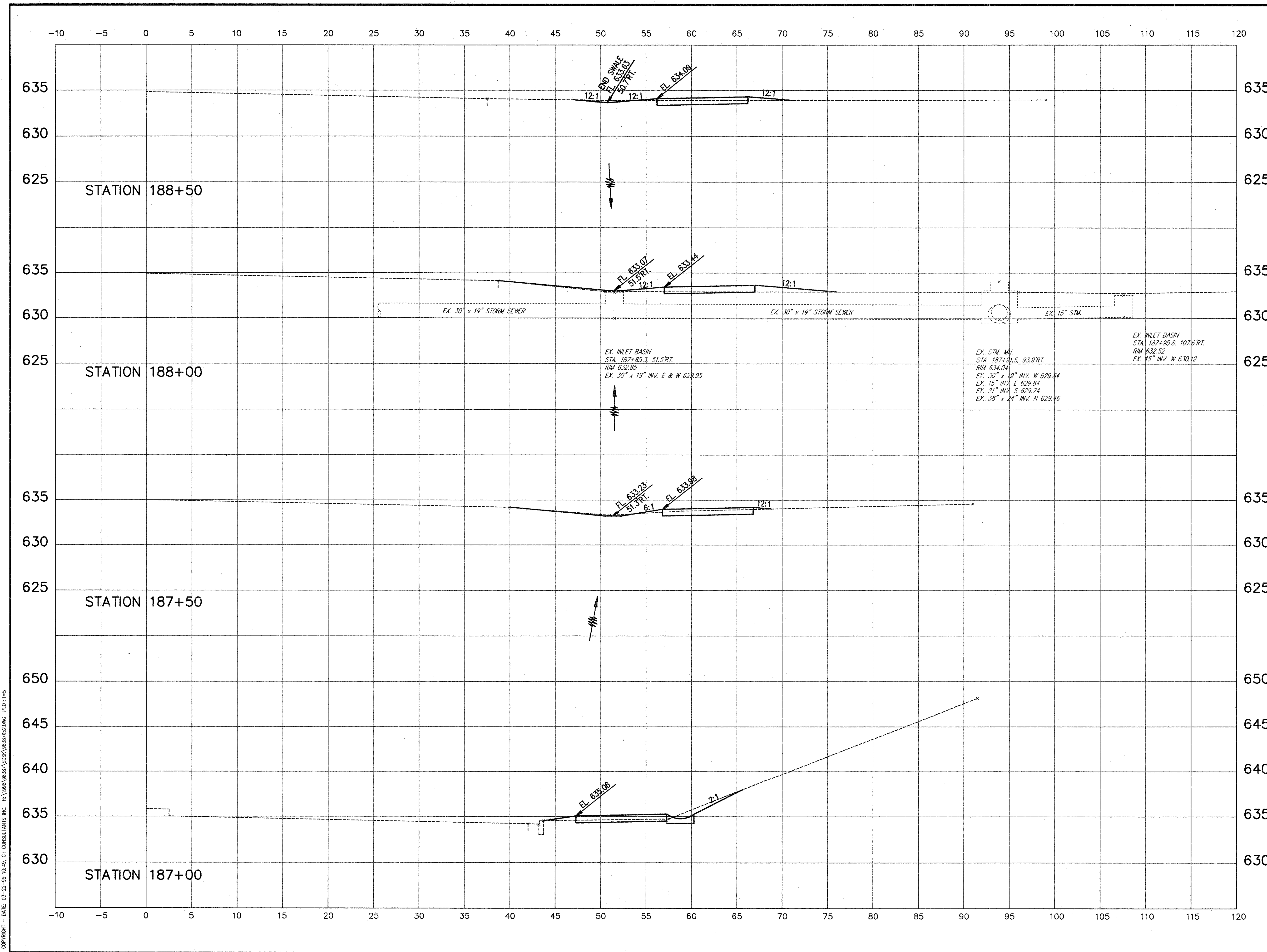


REVISIONS / REVISIONS

**CENTER STREET (STATE ROUTE 615)
ROADWAY IMPROVEMENTS
CENTER STREET
CROSS-SECTIONS
STA. 187+00 TO STA. 188+50**



DATE:	DECEMBER, 1988
DRAWN BY:	J.W.C.
CHECKED BY:	C.C.H.
APPROVED BY:	
SCALE:	
HOR:	1" = 5'
VERT:	1" = 5'
CONTRACT NO.	
98387	
SHEET NO.	OF
37	103



COPYRIGHT - DATE: 05-22-89 10-49, CT CONSULTANTS INC. H:\1988\98387\SDOK\98387C2.DWG PLOT:1-5