

SUBMISSIONS / REVISIONS

CENTER STREET (STATE ROUTE 615)
ROADWAY IMPROVEMENTS
CENTER STREET
CROSS-SECTIONS
STA. 184+00 TO STA. 185+31.9

CT Consultants, Inc.
Engineers • Architects • Planners
Willoughby • Mentor • Columbus • North Canton • Youngstown

DATE: DECEMBER, 1998

DRAWN BY: J.J.C.

CHECKED BY: C.C.H.

APPROVED BY:

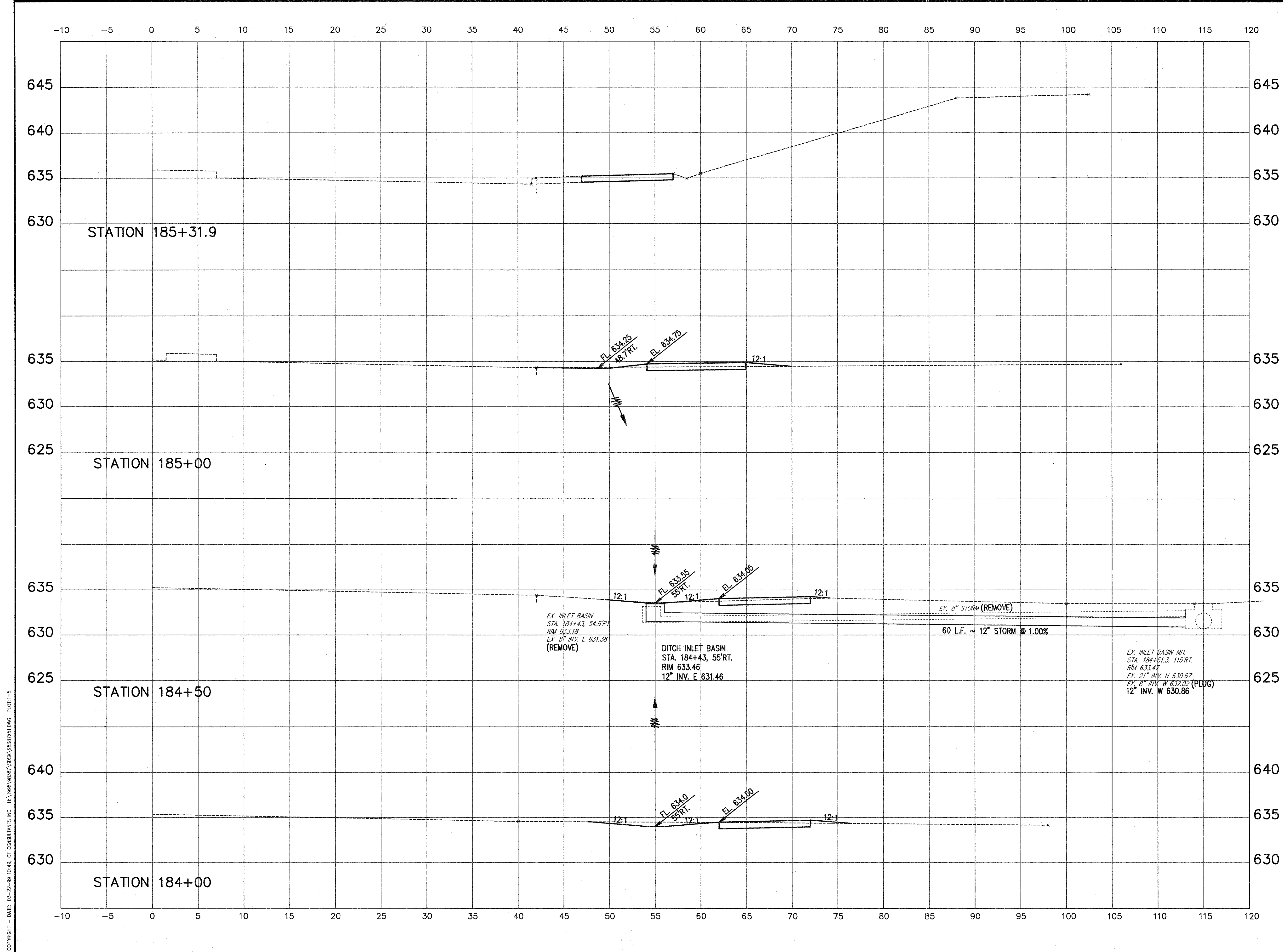
SCALE:
HOR. 1" = 5'
VERT. 1" = 5'

CONTRACT No.

98387

SHEET NO. OF

36 103



COPYRIGHT - DATE: 02-22-99 12:45 CT CONSULTANTS INC. H:\V98\98387\98387.DWG PLOT:1-5