

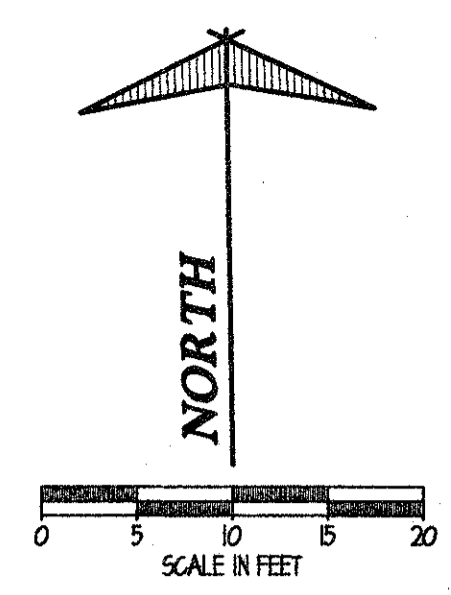
SUBMISSIONS / REVISIONS


**CENTER STREET (STATE ROUTE 615)  
ROADWAY IMPROVEMENTS  
INTERSECTION DETAILS  
CENTER STREET / MENTORWOOD DRIVE  
/ MANSION BLVD. INTERSECTION**

**CT Consultants, Inc.**  
Engineers • Architects • Planners  
Willoughby • Mentor • Columbus • North Canton • Youngstown

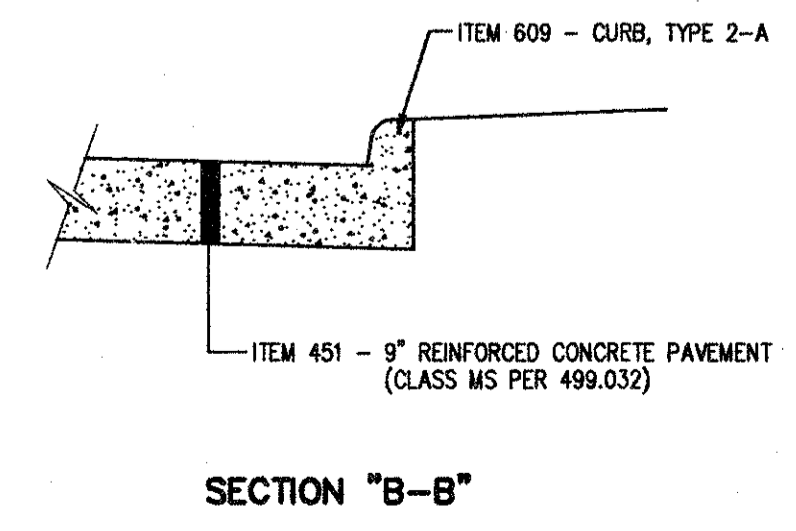
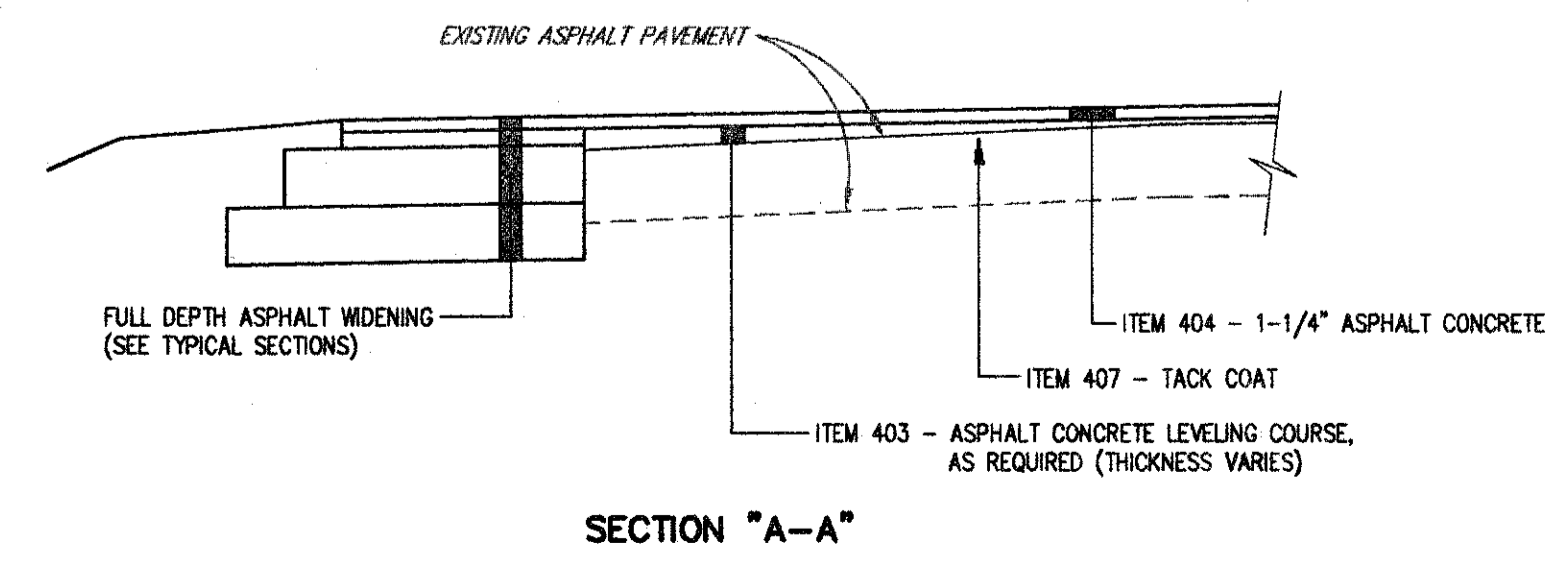
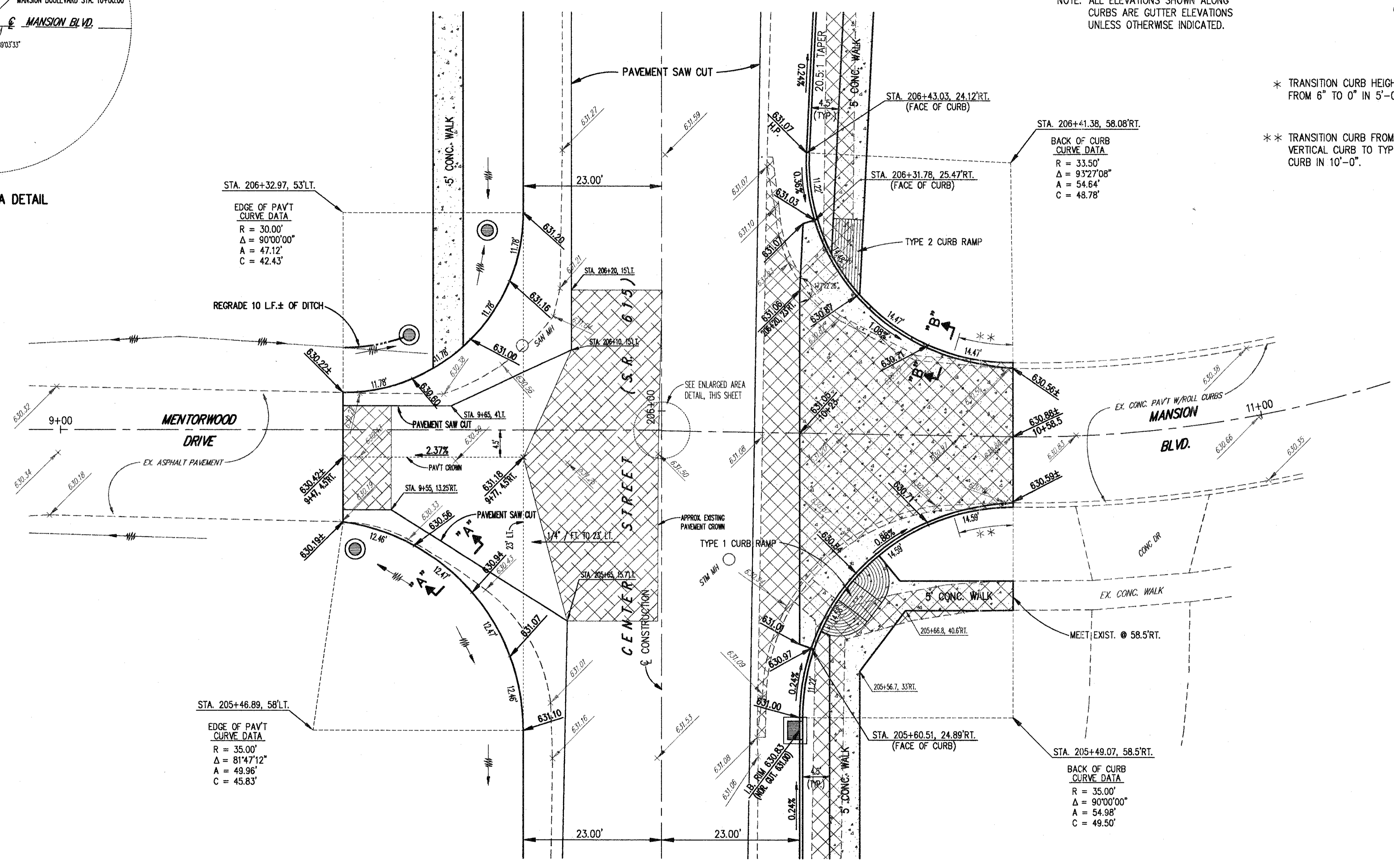
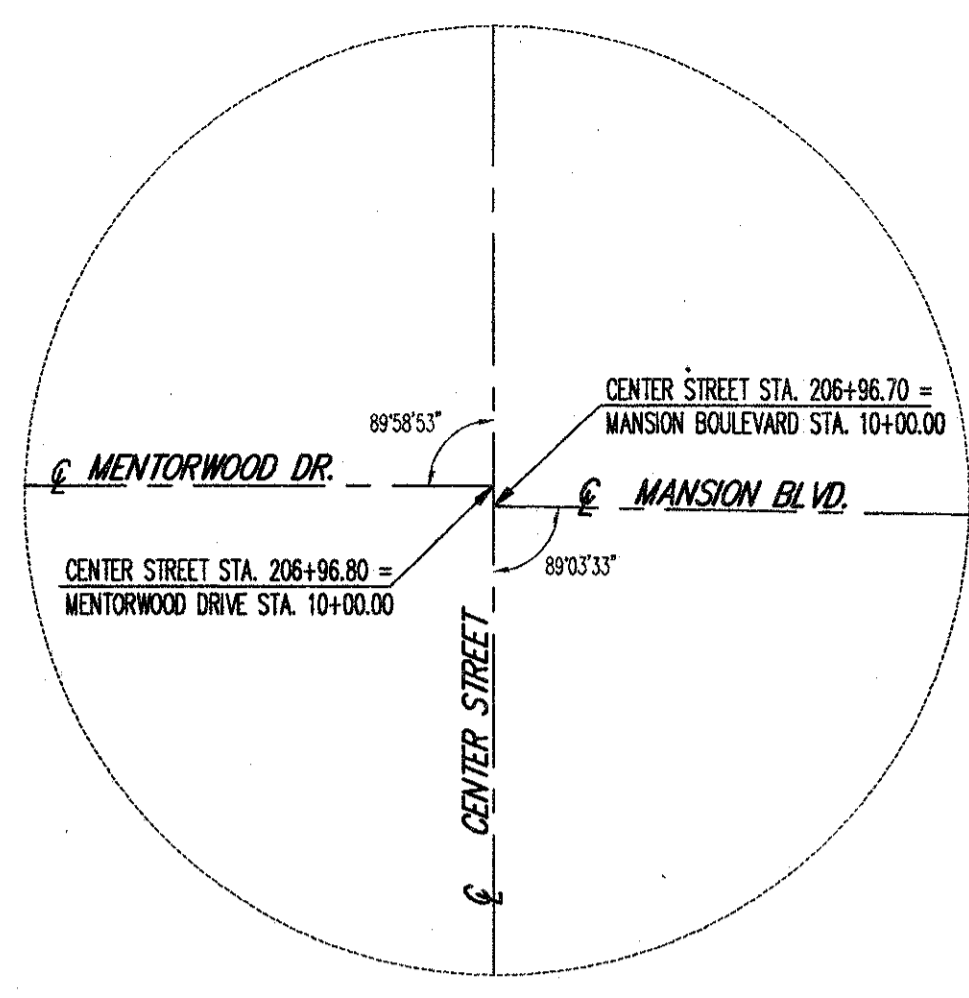
DATE:	APRIL, 1999
DRAWN BY:	J.J.C.
CHECKED BY:	C.C.H.
APPROVED BY:	
SCALE:	HOR. 1" = 10' VERT. 1" = 10'
CONTRACT NO.	
<b>98387</b>	
SHEET NO.	OF
<b>32</b>	<b>103</b>

- NEW CONCRETE PAVEMENT/SIDEWALK
- EXISTING CONC. PAVT TO BE REMOVED
- APPROX. AREA OF ASPHALT PAVEMENT PLANING



NOTE: ALL ELEVATIONS SHOWN ALONG CURBS ARE GUTTER ELEVATIONS UNLESS OTHERWISE INDICATED.

- \* TRANSITION CURB HEIGHT FROM 6" TO 0" IN 5'-0".
- \*\* TRANSITION CURB FROM TYPE 2-A VERTICAL CURB TO TYPE 3-A ROLL CURB IN 10'-0".



COPYRIGHT - DATE: 05-15-99 12:37, CT CONSULTANTS INC. H:\1998\SR615\SR615.DWG PLOT:1=10