

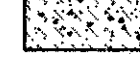
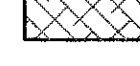
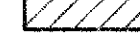
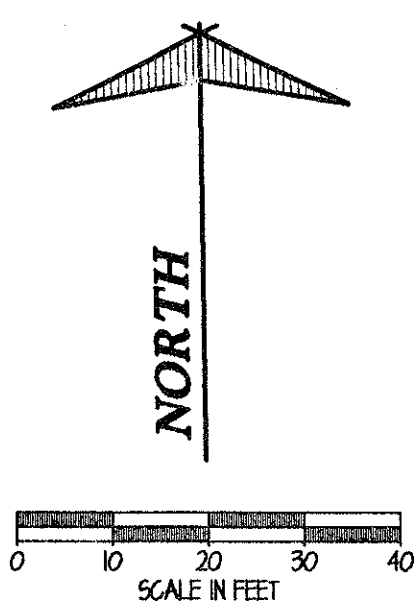


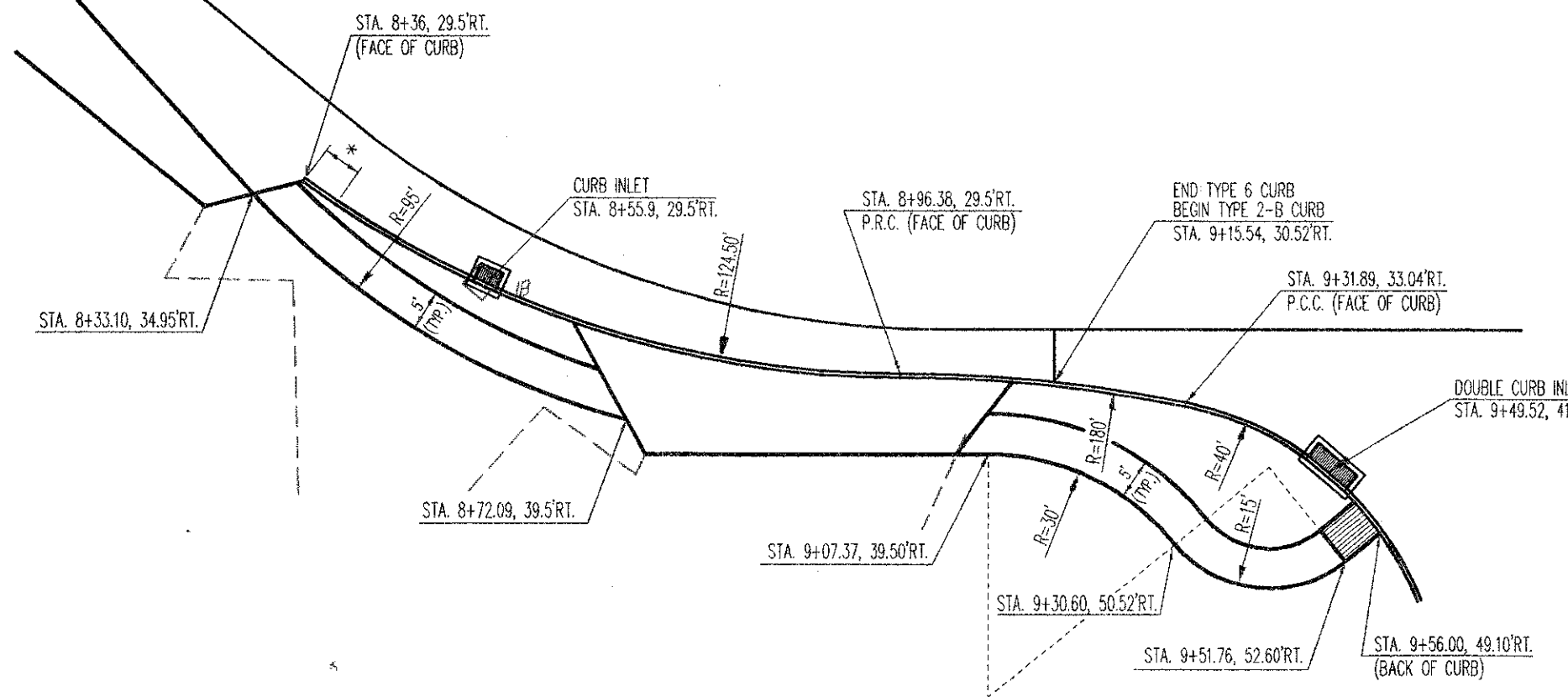
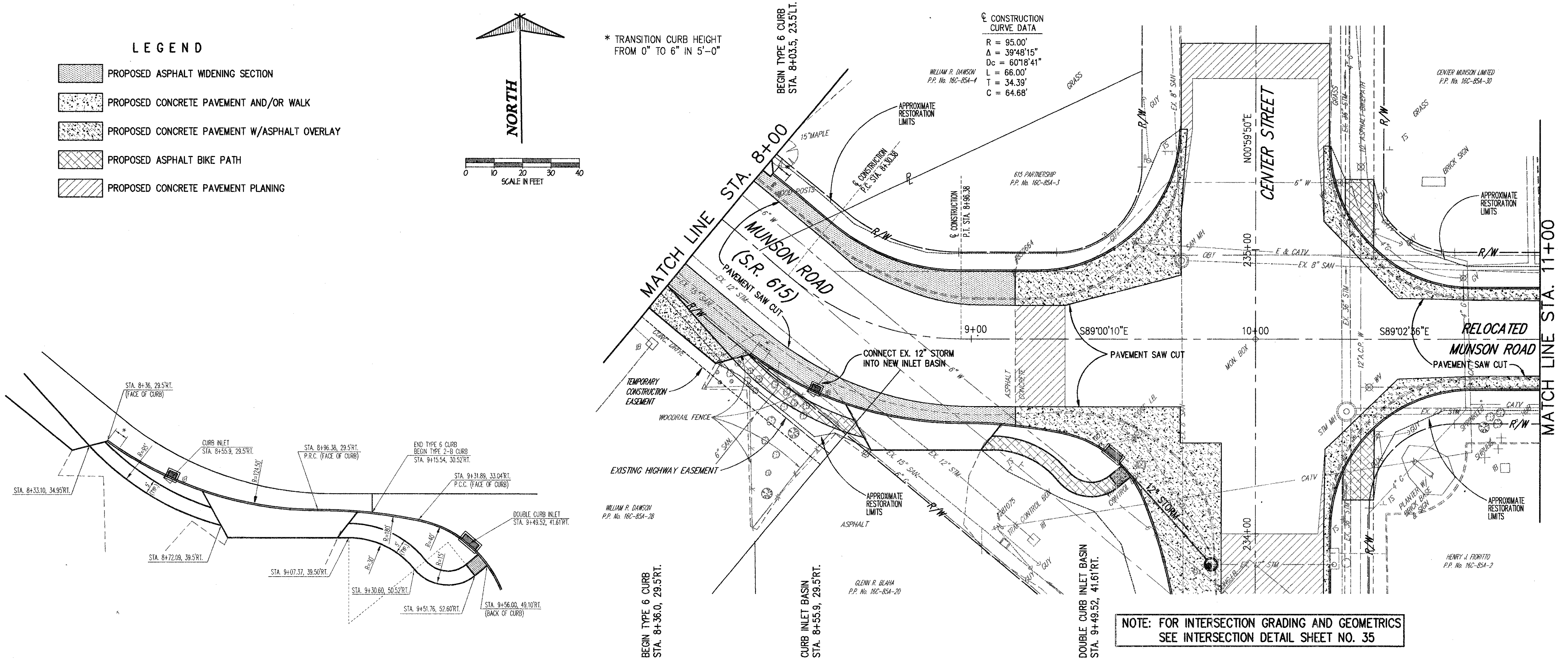
LEGEND

-  PROPOSED ASPHALT WIDENING SECTION
-  PROPOSED CONCRETE PAVEMENT AND/OR WALK
-  PROPOSED CONCRETE PAVEMENT W/ASPHALT OVERLAY
-  PROPOSED ASPHALT BIKE PATH
-  PROPOSED CONCRETE PAVEMENT PLANING



* TRANSITION CURB HEIGHT FROM 0" TO 6" IN 5'-0"

CONSTRUCTION CURVE DATA
 R = 95.00'
 Δ = 39°48'15"
 Dc = 60'18"41"
 L = 66.00'
 T = 34.39'
 C = 64.68'



NOTE: FOR INTERSECTION GRADING AND GEOMETRICS SEE INTERSECTION DETAIL SHEET NO. 35

Station	8+00	9+00	10+00	11+00
630				630
625				625
620				620
615				615
610				610
605				605
600				600

**CENTER STREET (STATE ROUTE 615)
 ROADWAY IMPROVEMENTS
 MUNSON ROAD
 PLAN & PROFILE
 STA. 8+00 TO STA. 11+00**

CT Consultants, Inc.
 Engineers • Architects • Planners
 Willoughby • Mentor • Columbus • North Canton • Youngstown

DATE:	DECEMBER, 1998
DRAWN BY:	J.J.C.
CHECKED BY:	C.C.H.
APPROVED BY:	
SCALE:	
HOR:	1" = 20'
VERT:	1" = 5'
CONTRACT NO.	98387
SHEET NO.	29
OF	103

COPYRIGHT - DATE: 05-12-98 11:19; CT CONSULTANTS INC. H:\9898\98387\98387\98387.DWG PLOT:11/20