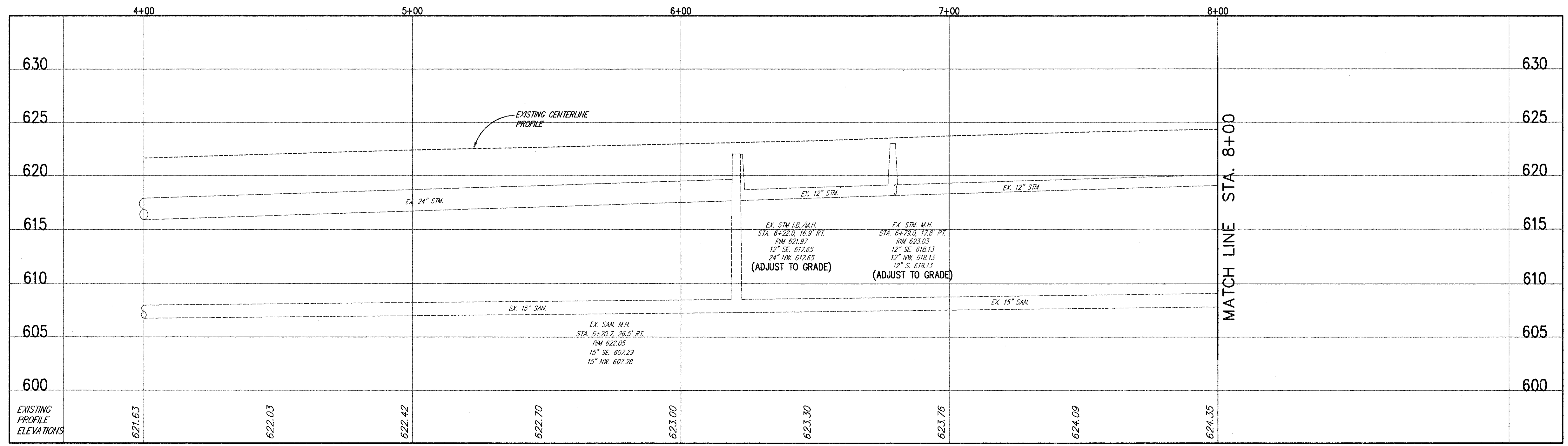


LEGEND

	PROPOSED ASPHALT WIDENING SECTION
	PROPOSED CONCRETE PAVEMENT AND/OR WALK
	PAVEMENT PLANING, BITUMINOUS



SUBMISSIONS / REVISIONS

**CENTER STREET (STATE ROUTE 615)
ROADWAY IMPROVEMENTS
MUNSON ROAD
PLAN & PROFILE
STA. 4+00 TO STA. 8+00**

CT Consultants, Inc.
Engineers • Architects • Planners
Willoughby • Mentor • Columbus • North Canton • Youngstown

DATE: DECEMBER, 1998
DRAWN BY: J.J.C.
CHECKED BY: C.C.H.
APPROVED BY: _____
SCALE: HOR: 1" = 20' VERT: 1" = 5'
CONTRACT NO. 98387
SHEET NO. 28 OF 103

COPYRIGHT - DATE: 02-12-99 15:06: CT CONSULTANTS INC. H:\1998\98387\SS\98387A1.DWG PLOT11=20