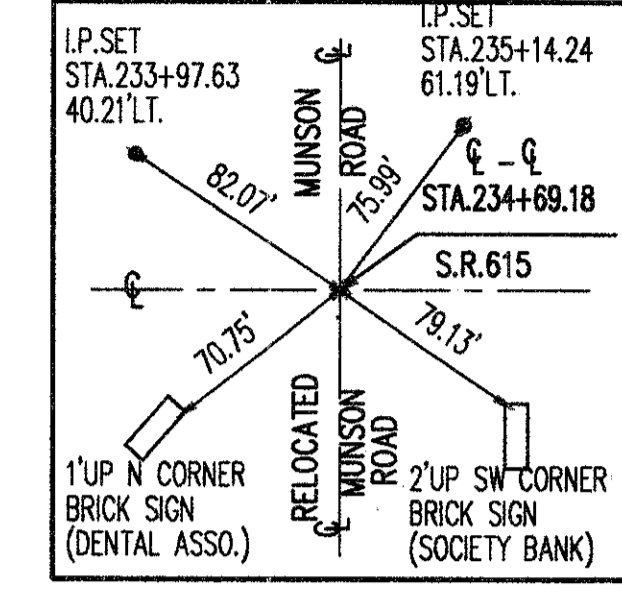
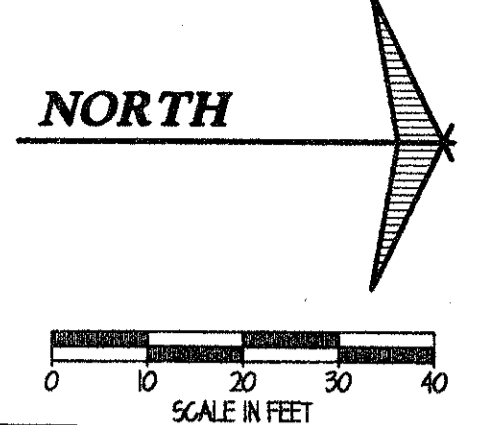
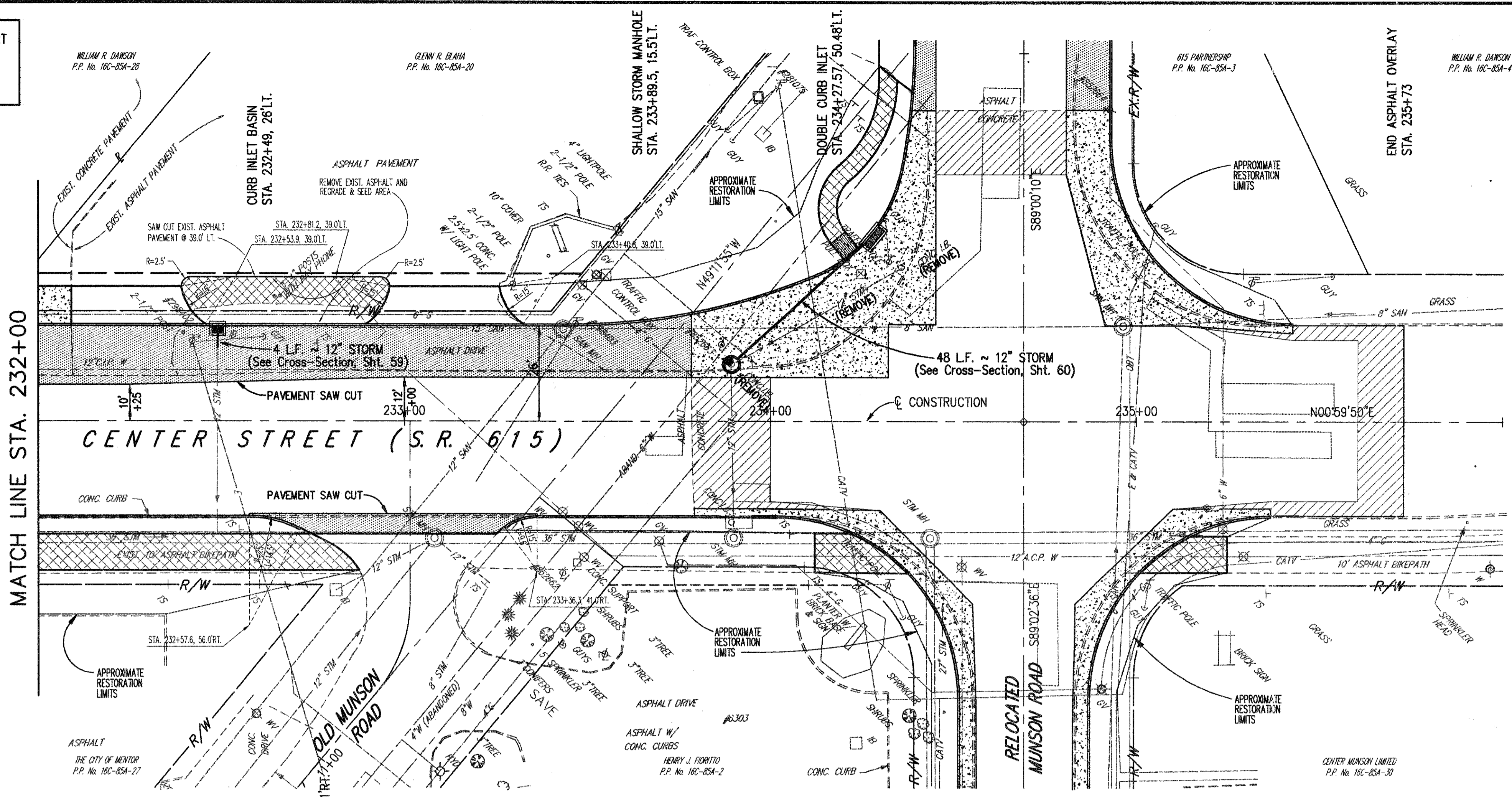


BENCH MARK:
TOP NW CORNER CONC.SUPPORT
FOR LIGHT POLE IN FRONT
OF DENTAL ASSOC.
STA.233+55± RT.
ELEV.626.02

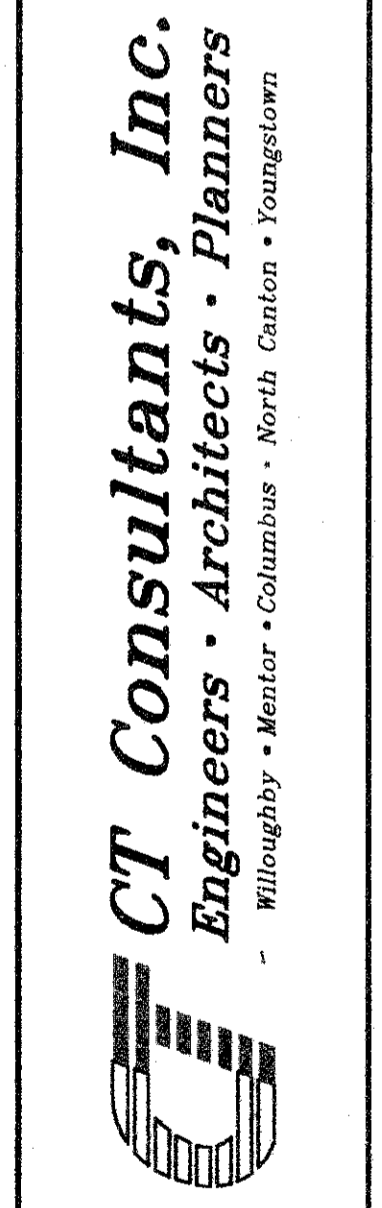


- LEGEND**
- PROPOSED ASPHALT WIDENING SECTION
 - PROPOSED CONCRETE PAVEMENT AND/OR WALK
 - PROPOSED AREA OF CONCRETE PAVEMENT PLANING
 - PROPOSED ASPHALT BIKE PATH

NOTE: FOR INTERSECTION GRADING AND GEOMETRICS
SEE INTERSECTION DETAIL SHEET NO. 35

	232+00	233+00	234+00	235+00	236+00			
630	PROPOSED GUTTER ELEVATIONS 625.06	624.62	624.18	623.78 +44.97	630			
625	PROPOSED GUTTER PROFILE (LEFT SIDE) GR = -0.88%							
620	EXISTING CENTERLINE PROFILE							
615	EX. 36" STM.							
610	EX. 15" SAN.							
605	EX. 12" SAN.							
605	EX. I.B. STA. 232+81, 46.41 RT. RIM 624.52 12" NW. 620.53	EX. STM. M.H. STA. 233+08.25, 32.12 RT. RIM 624.26 36" S. 613.80 36" N. 613.75 12" SE & E. 620.26 12" NE. 620.06	EX. SAN. M.H.#9 STA. 233+43.42, 25.16 LT. RIM 624.99 15" S. 608.53 15" NW. 608.39 8" N. 610.04 12" SE. 609.47 (ADJUST TO GRADE)	EX. I.B. STA. 233+23, 44.49 RT. RIM 623.55 12" SW. 620.15 8" SE. 620.90	EX. I.B. STA. 233+89.38, 27.75 RT. RIM 624.04 12" E. 617.31 12" W. 617.35	EX. I.B. STA. 234+35.74, 41.75 LT. RIM 623.07 12" SE. 618.75	605	
EXISTING PROFILE ELEVATIONS	625.48	624.93	624.46	623.61	623.47	622.94	622.86	622.86

**CENTER STREET (STATE ROUTE 615)
ROADWAY IMPROVEMENTS
CENTER STREET
PLAN & PROFILE
STA. 232+00 TO STA. 236+00**



DATE:	DECEMBER, 1998
DRAWN BY:	J.J.C.
CHECKED BY:	C.C.H.
APPROVED BY:	
HOR. SCALE:	1" = 20'
VERT. SCALE:	1" = 5'
CONTRACT NO.:	98387
SHEET NO.:	27
OF	103

COPYRIGHT - DATE: 11-24-98 10:49; CT CONSULTANTS INC. H:\1998\98387\SDR\98387.P1.DWG; PLOT: 11-20