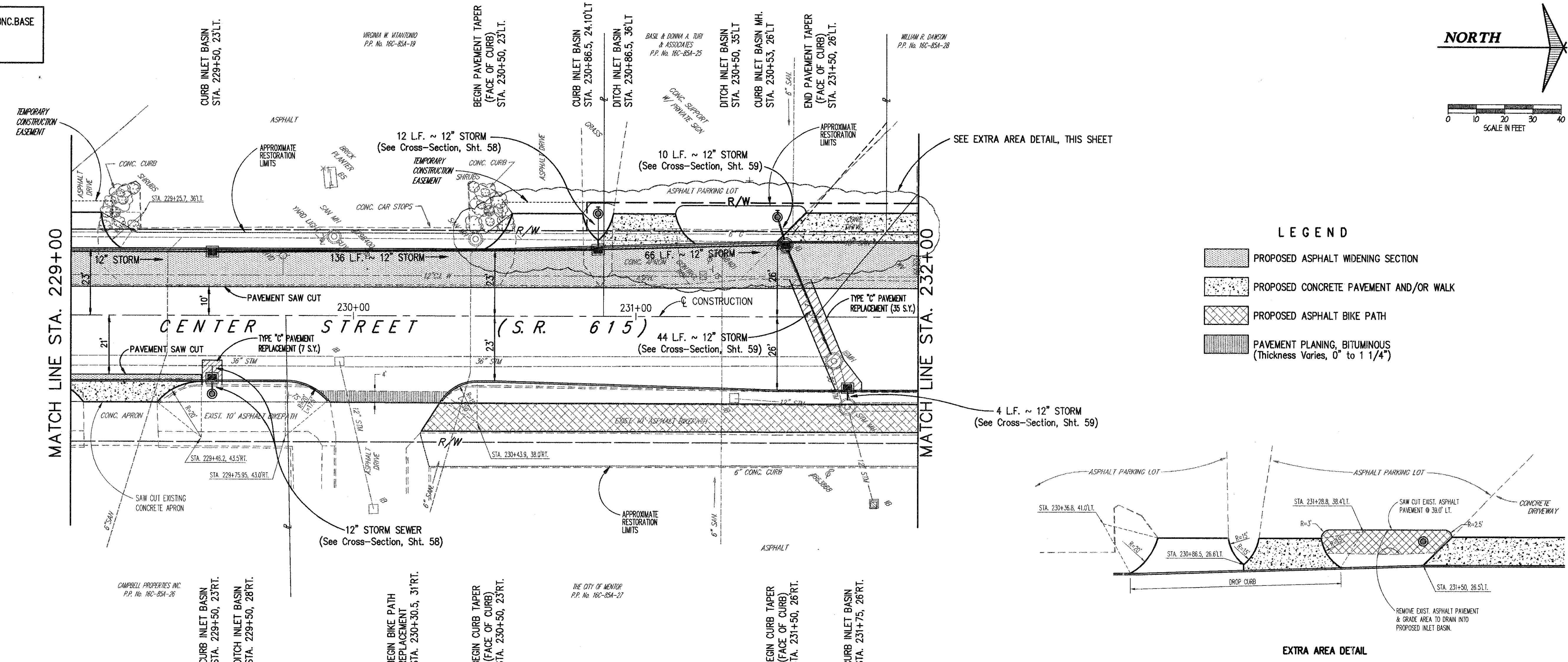
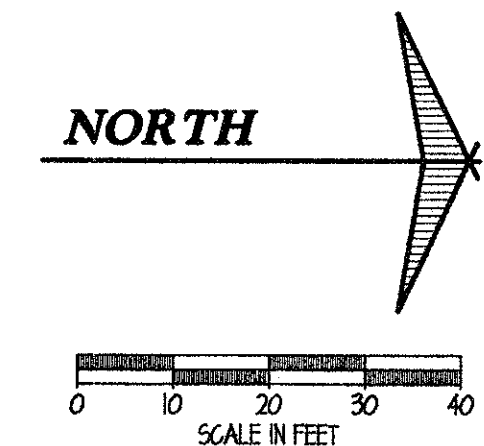
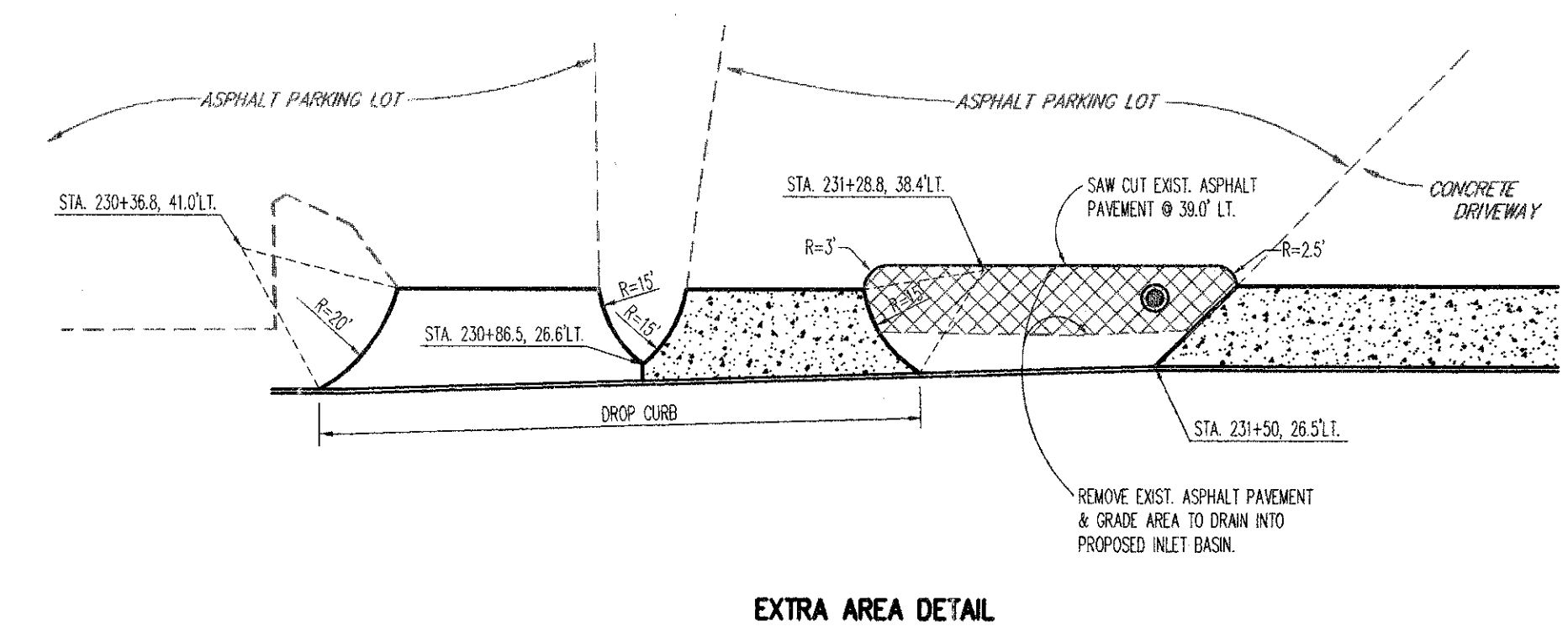


BENCH MARK:
TOP SE BOLT ON CONC. BASE
FOR TURI SIGN
STA. 231+40± LT.
ELEV. 628.14



- LEGEND**
- PROPOSED ASPHALT WIDENING SECTION
 - PROPOSED CONCRETE PAVEMENT AND/OR WALK
 - PROPOSED ASPHALT BIKE PATH
 - PAVEMENT PLANING, BITUMINOUS (Thickness Varies, 0" to 1 1/4")



STATION	PROPOSED GUTTER ELEVATIONS	EXISTING CENTERLINE PROFILE	PROPOSED GUTTER PROFILE (LEFT SIDE)	REMOVE EX. 12" STM.
229+00	626.32	626.18	626.04	625.90
230+00	626.18	626.04	625.90	625.70
231+00	625.90	625.70	625.50	625.06
232+00	625.06	625.06	625.06	625.06

**CENTER STREET (STATE ROUTE 615)
ROADWAY IMPROVEMENTS
CENTER STREET
PLAN & PROFILE
STA. 229+00 TO STA. 232+00**

CT Consultants, Inc.
 Engineers • Architects • Planners
 Willoughby • Mentor • Columbus • North Canton • Youngstown

DATE:	DECEMBER, 1998
DRAWN BY:	J.L.C.
CHECKED BY:	C.C.H.
APPROVED BY:	
SCALE:	HOR. 1" = 20' VERT. 1" = 5'
CONTRACT NO.:	98387
SHEET NO.:	26 OF 103

COPYRIGHT - DATE: 05-12-99 09:45: CT CONSULTANTS INC. H:\1998\98387\DRAWING\98387.DWG PLOT:11-20