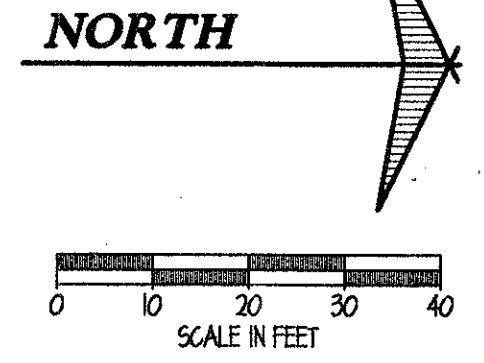


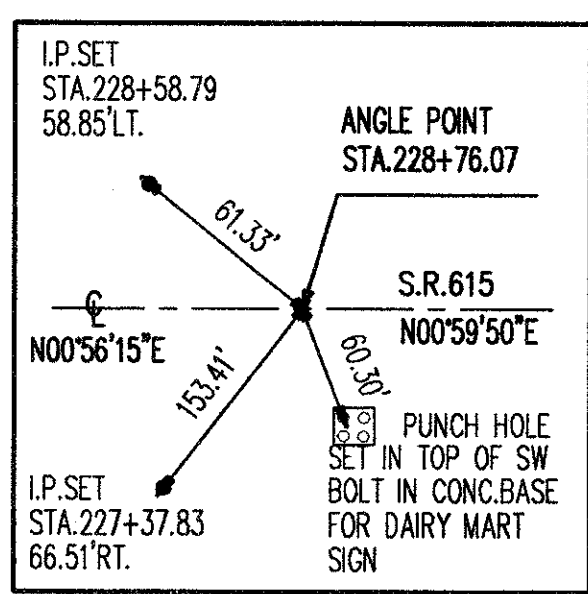
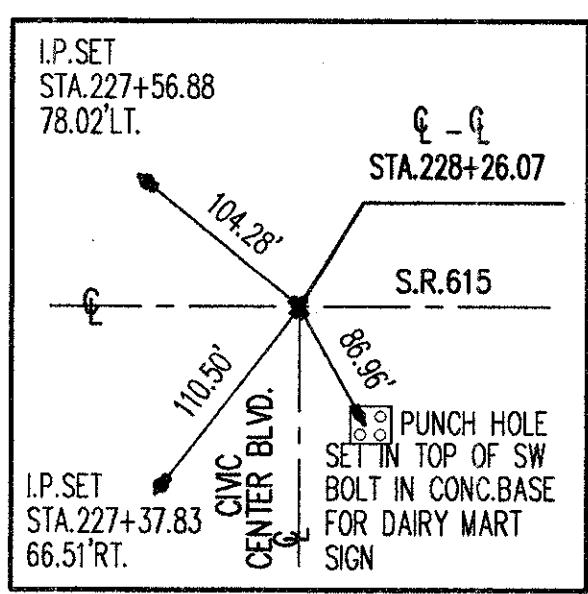
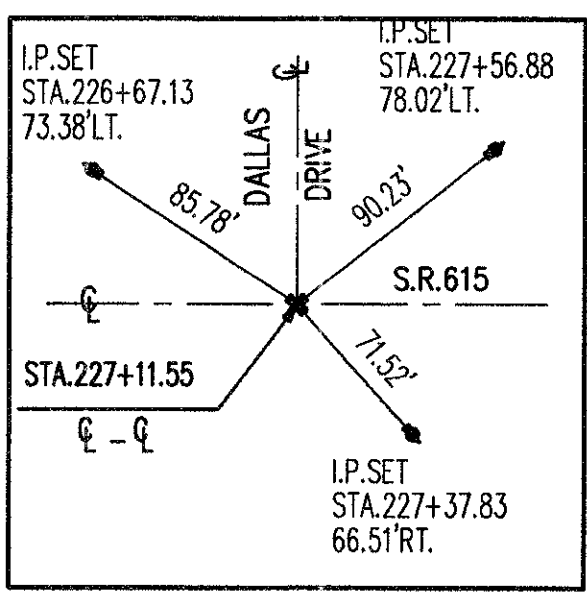
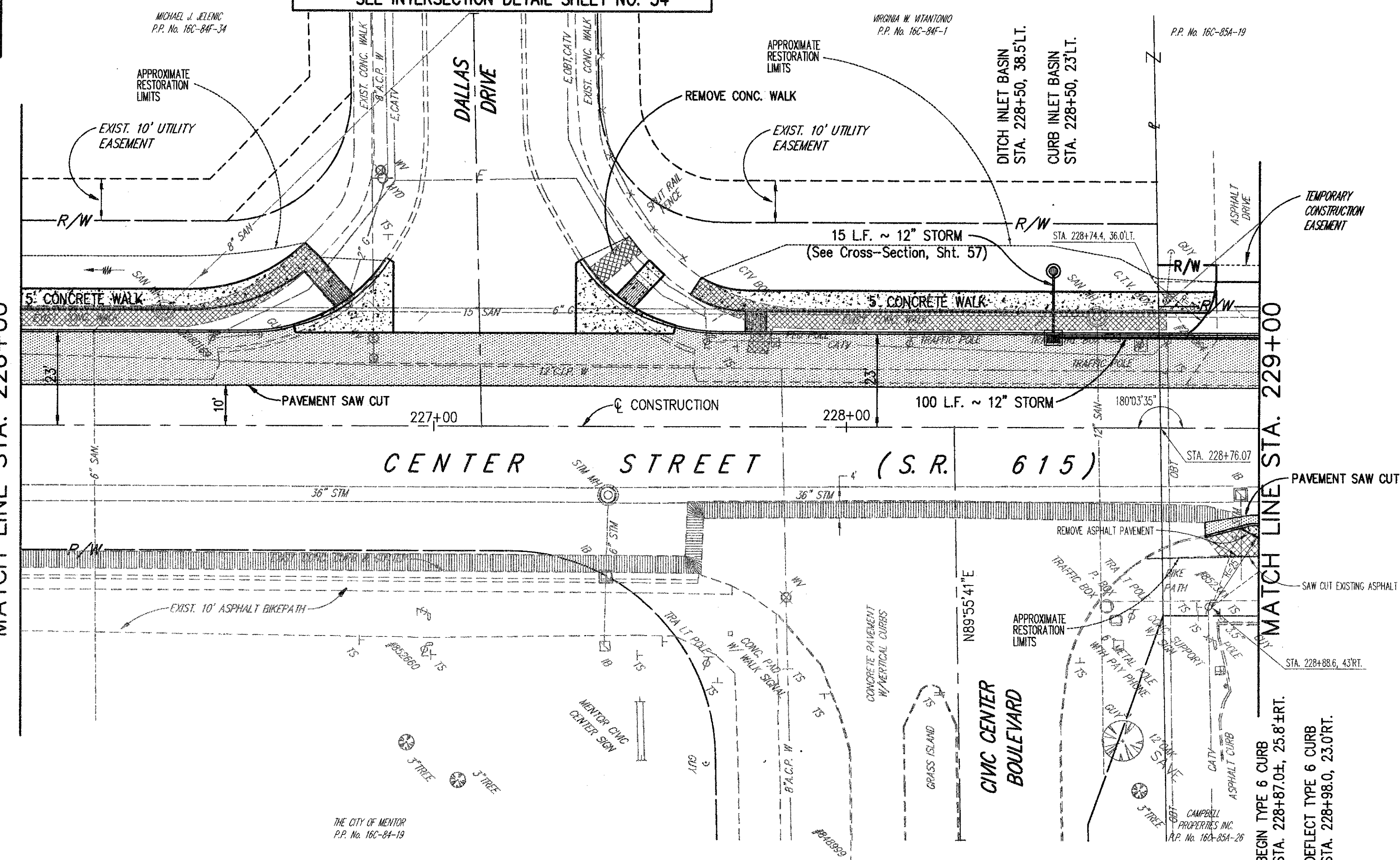
BENCH MARK:  
TOP CHISELED IN TOP WEST  
SIDE CONC. BASE FOR LT. POLE  
STA. 227+94± RT.  
ELEV. 626.10

NOTE: FOR INTERSECTION GRADING AND GEOMETRICS  
SEE INTERSECTION DETAIL SHEET NO. 34



MATCH LINE STA. 226+00

MATCH LINE STA. 229+00



- LEGEND**
- PROPOSED ASPHALT WIDENING SECTION
  - PROPOSED CONCRETE PAVEMENT AND/OR WALK
  - EXISTING CONCRETE WALK TO BE REMOVED
  - PAVEMENT PLANING, BITUMINOUS (Thickness Varies, 0" to 1 1/4")

	226+00	227+00	228+00	229+00	
635	627.22	627.04 +50 627.02 +55.34	626.69 +69.16	626.60	626.46 +50
630					
625					
620					
615					
610					
605					
600					
EXISTING PROFILE ELEVATIONS	627.61	627.42	627.28	627.06	626.82

**CENTER STREET (STATE ROUTE 615)  
ROADWAY IMPROVEMENTS  
CENTER STREET  
PLAN & PROFILE  
STA. 228+00 TO STA. 231+00**

**CT Consultants, Inc.**  
 Engineers • Architects • Planners  
 Willoughby • Mentor • Columbus • North Canton • Youngstown

DATE: DECEMBER, 1988  
 DRAWN BY: J.J.C.  
 CHECKED BY: C.G.H.  
 APPROVED BY:  
 SCALE:  
 HOR. 1" = 20'  
 VERT. 1" = 5'  
 CONTRACT NO.  
**98387**  
 SHEET NO. OF  
**25 103**

COPYRIGHT - DATE: 05-12-99 09:37, CT CONSULTANTS INC. H:\1988\98387\SSA\98387.PLOT1+20