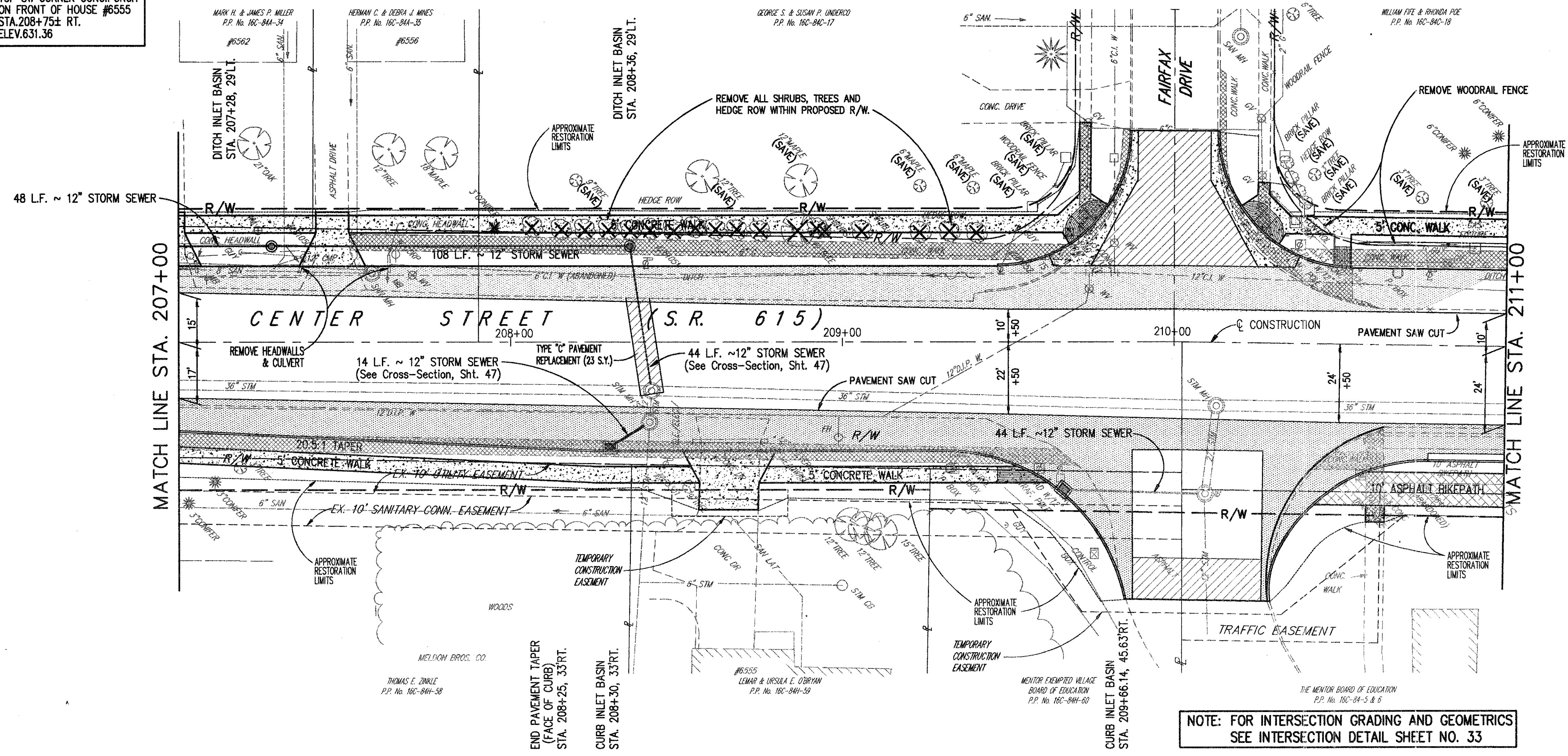
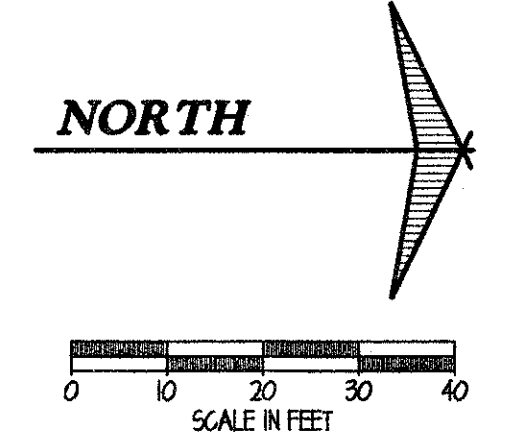


BENCH MARK:
TOP SW CORNER CONC. PORCH
ON FRONT OF HOUSE #6555
STA. 208+75± RT.
ELEV. 631.36



- LEGEND**
- PROPOSED ASPHALT WIDENING SECTION
 - PROPOSED CONCRETE PAVEMENT AND/OR WALK
 - PROPOSED ASPHALT PAVEMENT PLANNING
 - PROPOSED ASPHALT BIKE PATH
 - EXISTING CONCRETE WALK TO BE REMOVED

NOTE: FOR INTERSECTION GRADING AND GEOMETRICS
SEE INTERSECTION DETAIL SHEET NO. 33

	207+00	208+00	209+00	210+00	211+00
635	PROPOSED GUTTER ELEVATIONS 630.83	630.81 +50	630.89	630.63 +25	630.57 +50
630		PROPOSED GUTTER PROFILE (RIGHT SIDE) GR = -0.24%			630.45
625		EXISTING CENTERLINE PROFILE			630.38 +30.88
620		SEE INTERSECTION DETAIL, SHEET 33			630.28 +77.04
615		PROPOSED PROFILE @ FACE OF CONC. CURB & GUTTER (RIGHT SIDE) GR = 0.20%			630.23
610					
605					
EXISTING PROFILE ELEVATIONS	631.47	631.35	631.27	631.14	631.05

SUBMISSIONS / REVISIONS

**CENTER STREET (STATE ROUTE 615)
ROADWAY IMPROVEMENTS
CENTER STREET
PLAN & PROFILE
STA. 207+00 TO STA. 211+00**

CT Consultants, Inc.
Engineers • Architects • Planners
Willoughby • Mentor • Columbus • North Canton • Youngstown

DATE: DECEMBER, 1998
DRAWN BY: J.C.
CHECKED BY: C.C.H.
APPROVED BY:
SCALE: HOR: 1" = 20' VERT: 1" = 5'
CONTRACT NO: 98387
SHEET NO. OF 20 103

COPYRIGHT - DATE: 05-12-99 07:40, CT CONSULTANTS INC. H:\10980\98387\SSA\98387.PLOT14.DWG. PLOT: 14-20