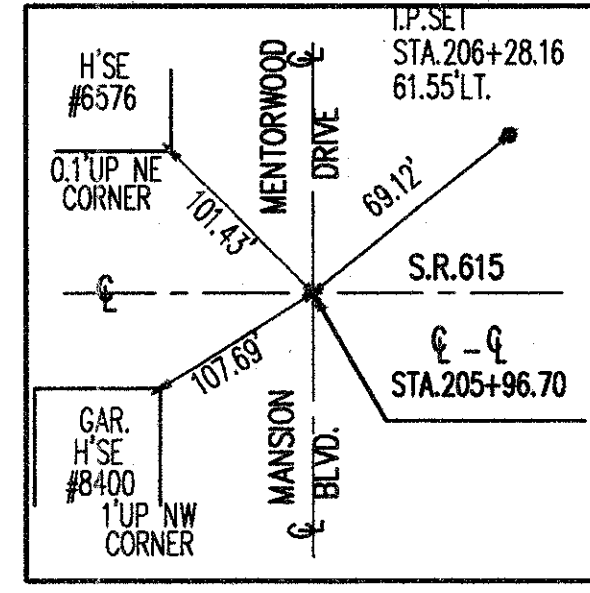
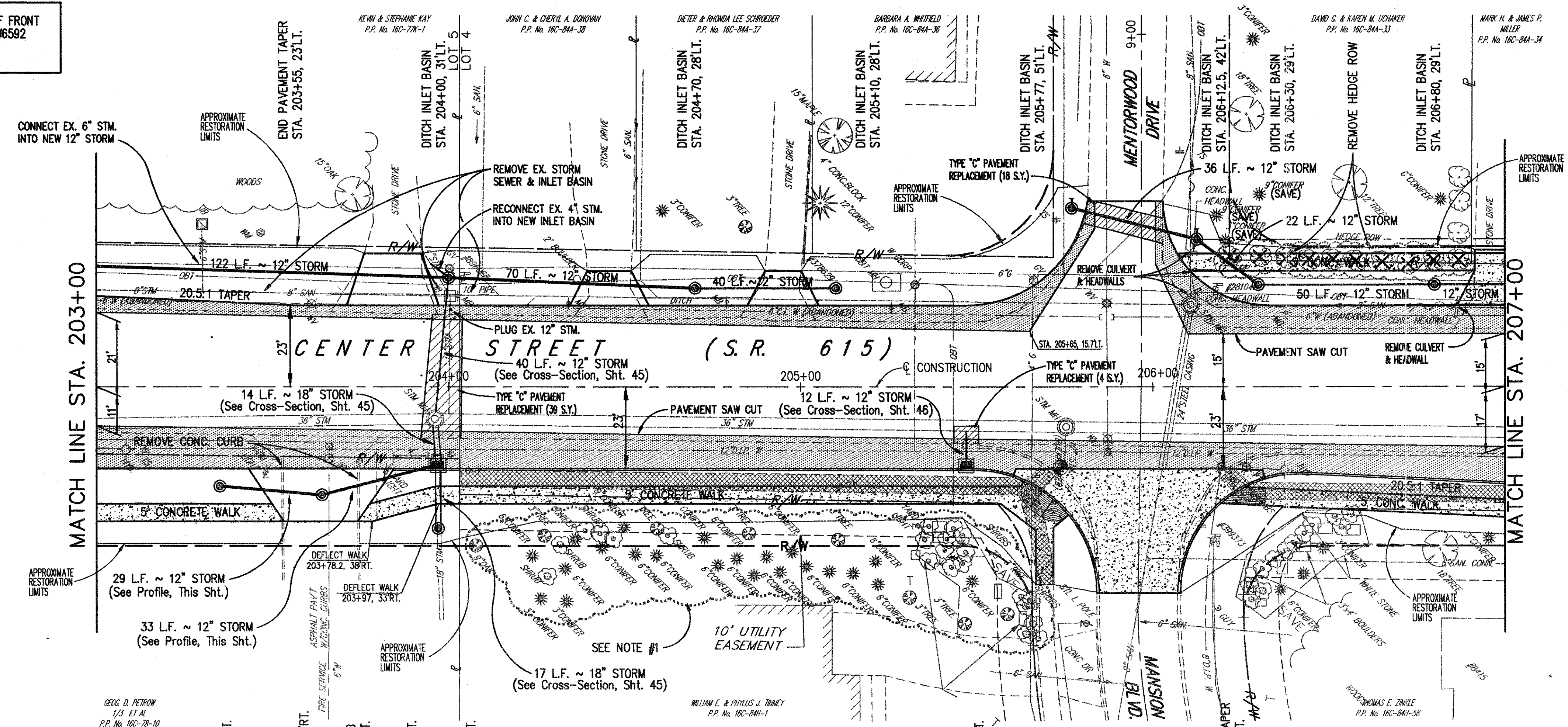
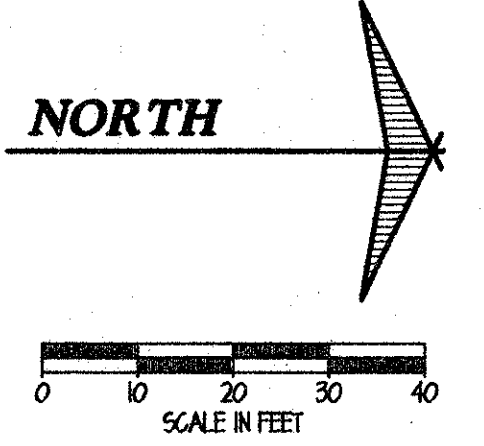


BENCH MARK:  
TOP SE CORNER OF FRONT  
STEPS TO HOUSE #6592  
STA. 204+29± LT.  
ELEV. 632.57



NOTE: FOR INTERSECTION GRADING AND GEOMETRICS  
SEE INTERSECTION DETAIL SHEET NO. 32

- LEGEND**
- PROPOSED ASPHALT WIDENING SECTION
  - PROPOSED CONCRETE PAVEMENT AND/OR WALK
  - EXISTING CONCRETE WALK TO BE REMOVED

PROPOSED  
PROFILE  
TRANSITION CURB HEIGHT  
ELEVATIONS FROM 0' TO 6" IN 10'

PROPOSED GUTTER ELEVATIONS	203+00	204+00	205+00	206+00	207+00
635	631.06 +84	631.00 +97	631.24 +50	631.12	631.00 +49.07
630	GR = -0.40%	GR = -0.30%	GR = +0.45%	GR = -0.48%	GR = -1.04%
625	122 L.F. ~ 12" STORM @ 0.28%	70 L.F. ~ 12" STORM @ 0.40%	40 L.F. ~ 12" STORM @ 0.40%	36 L.F. ~ 12" STORM @ 0.28%	22 L.F. ~ 12" STORM @ 0.28%
620	EX. 36" STM.	EX. 8" SAN.	EX. 8" SAN.	EX. 36" STM.	EX. 36" STM.
615	EX. STM. M.H. STA. 203+96.09, 9.02' RT. RIM 631.33 36" N. & S. 627.18 18" E. 627.93 (ADJUST TO GRADE)	EX. I.B. STA. 203+29.97, 46.07' LT. RIM 630.50 6" E. 629.57	EX. STM. M.H. STA. 205+75.38, 11.24' RT. RIM 631.19 36" S. 626.90 36" N. 626.94 12" E. 627.19 (ADJUST TO GRADE)	EX. SAN. M.H. #151 STA. 206+10.73, 23.19' LT. RIM 630.57 8" N. & S. 622.03 8" E. & W. 621.93 (ADJUST TO GRADE)	631.07 +43.03
610	DITCH INLET BASIN STA. 203+35, 28' RT.	DITCH INLET BASIN STA. 204+00, 31' LT. RIM 629.80 12" INV. S. 627.56	DITCH INLET BASIN STA. 204+70, 28' LT. RIM 630.45 12" INV. N & S 627.84	DITCH INLET BASIN STA. 205+77, 51' LT. RIM 630.00 12" INV. N & W 627.43 (12" PLUGGED STUB WEST) MANSION BLVD. / MENTORWOOD DRIVE STA. 205+96.70	DITCH INLET BASIN STA. 206+30, 29' LT. RIM 630.00 12" INV. N & S 627.27
605	DITCH INLET BASIN STA. 203+64, 30.5' RT. RIM 630.83 12" INV. N & S 627.87	DITCH INLET BASIN STA. 203+97, 23' RT. RIM 630.83 12" INV. E & W 627.54 12" INV. S 627.54	DITCH INLET BASIN STA. 204+47, 23' RT. RIM 630.05	DITCH INLET BASIN STA. 205+47, 23' RT. RIM 629.91	DITCH INLET BASIN STA. 206+80, 29' LT. RIM 629.50 12" INV. N & S 627.13
EXISTING PROFILE ELEVATIONS	631.80	631.66	631.55	631.51	631.47

STORM SEWER PROFILE  
(Sta. 203+35 to Sta. 203+97, Rt.)

**CENTER STREET (STATE ROUTE 615)  
ROADWAY IMPROVEMENTS  
CENTER STREET  
PLAN & PROFILE  
STA. 203+00 TO STA. 207+00**



DATE:	DECEMBER, 1998
DRAWN BY:	J.J.C.
CHECKED BY:	C.C.H.
APPROVED BY:	
SCALE:	HOR: 1" = 20' VERT: 1" = 5'
CONTRACT NO.:	98387
SHEET NO.:	19
OF	103

COPYRIGHT - DATE: 05-11-98 14:08: CT CONSULTANTS INC. H:\1998\ASST\SR615\ASST\PROG.DWG. PLOT#00