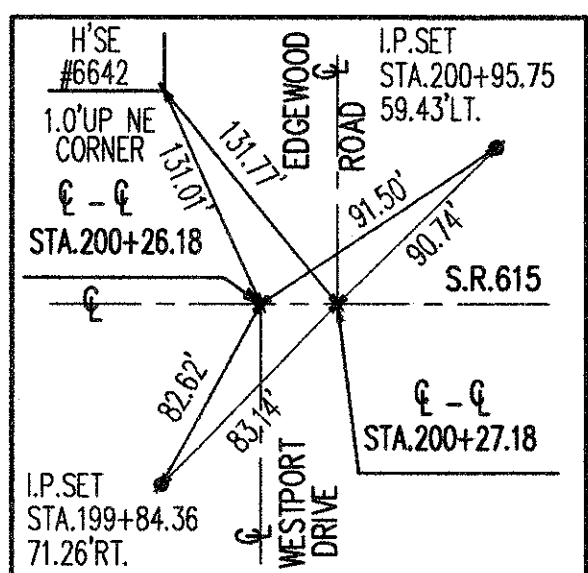
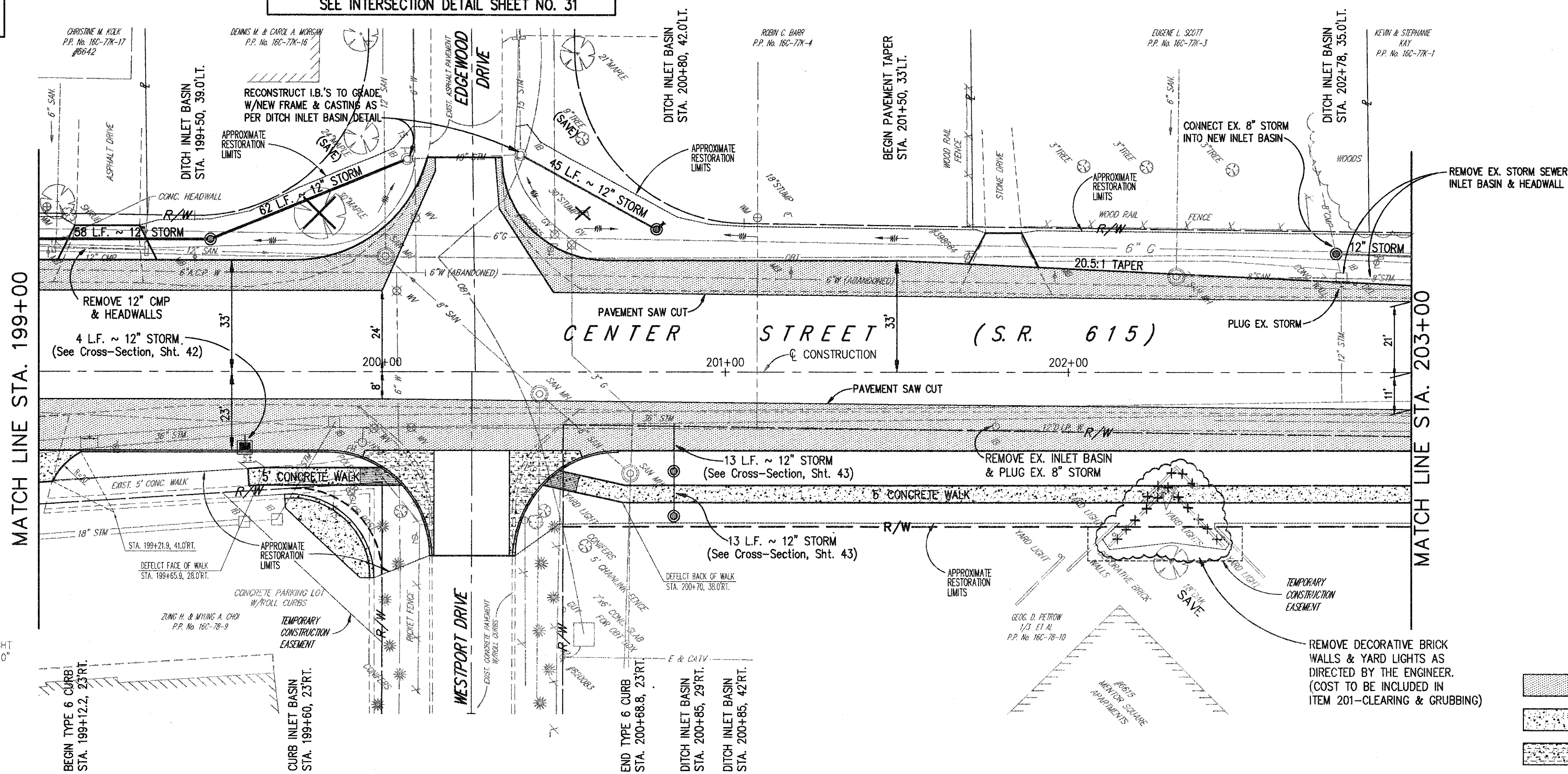
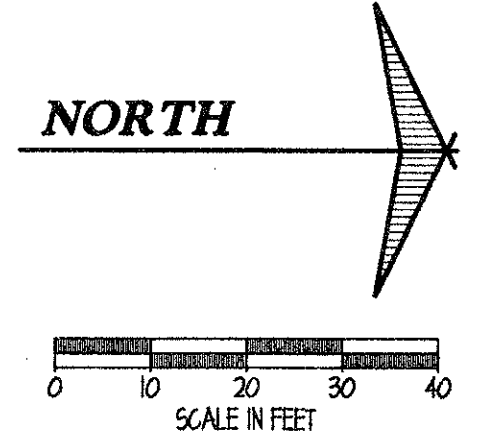


BENCH MARK:  
TOP NE CORNER CONC. PORCH  
ON FRONT OF HOUSE #6626  
STA. 201+17± LT.  
ELEV. 632.61

NOTE: FOR INTERSECTION GRADING AND GEOMETRICS  
SEE INTERSECTION DETAIL SHEET NO. 31



- LEGEND**
- PROPOSED ASPHALT WIDENING SECTION
  - PROPOSED CONCRETE PAVEMENT AND/OR WALK
  - PROPOSED CONCRETE PAVEMENT W/ ASPHALT OVERLAY

\* NOTE: TRANSITION CURB HEIGHT  
FROM 0" TO 6" IN 5'-0"

EXISTING PROFILE ELEVATIONS	199+00	200+00	201+00	202+00	203+00	
635	631.78 +12.2	631.69 +50	631.67 +60.0 CHANGE GRADE	631.75 +83.8	635	
630					630	
625					625	
620					620	
615					615	
610					610	
632.23		632.09	632.14	631.97	631.88	631.80

SUBMISSIONS / REVISIONS

**CENTER STREET (STATE ROUTE 615)  
ROADWAY IMPROVEMENTS  
CENTER STREET  
PLAN & PROFILE**  
STA. 199+00 TO STA. 203+00

**CT Consultants, Inc.**  
Engineers • Architects • Planners  
Wilmington • Mentor • Columbus • North Canton • Youngstown

DATE: DECEMBER, 1998  
DRAWN BY: J.L.C.  
CHECKED BY: C.C.H.  
APPROVED BY: \_\_\_\_\_  
SCALE: 1" = 20'  
HORIZ. 1" = 5'  
CONTRACT NO. **98387**  
SHEET NO. **18** OF **103**

COPYRIGHT - DATE: 11-20-98 10:48 CT CONSULTANTS INC. H:\USER\JLCO\DESIGN\98\98387.DWG PLOT11-20