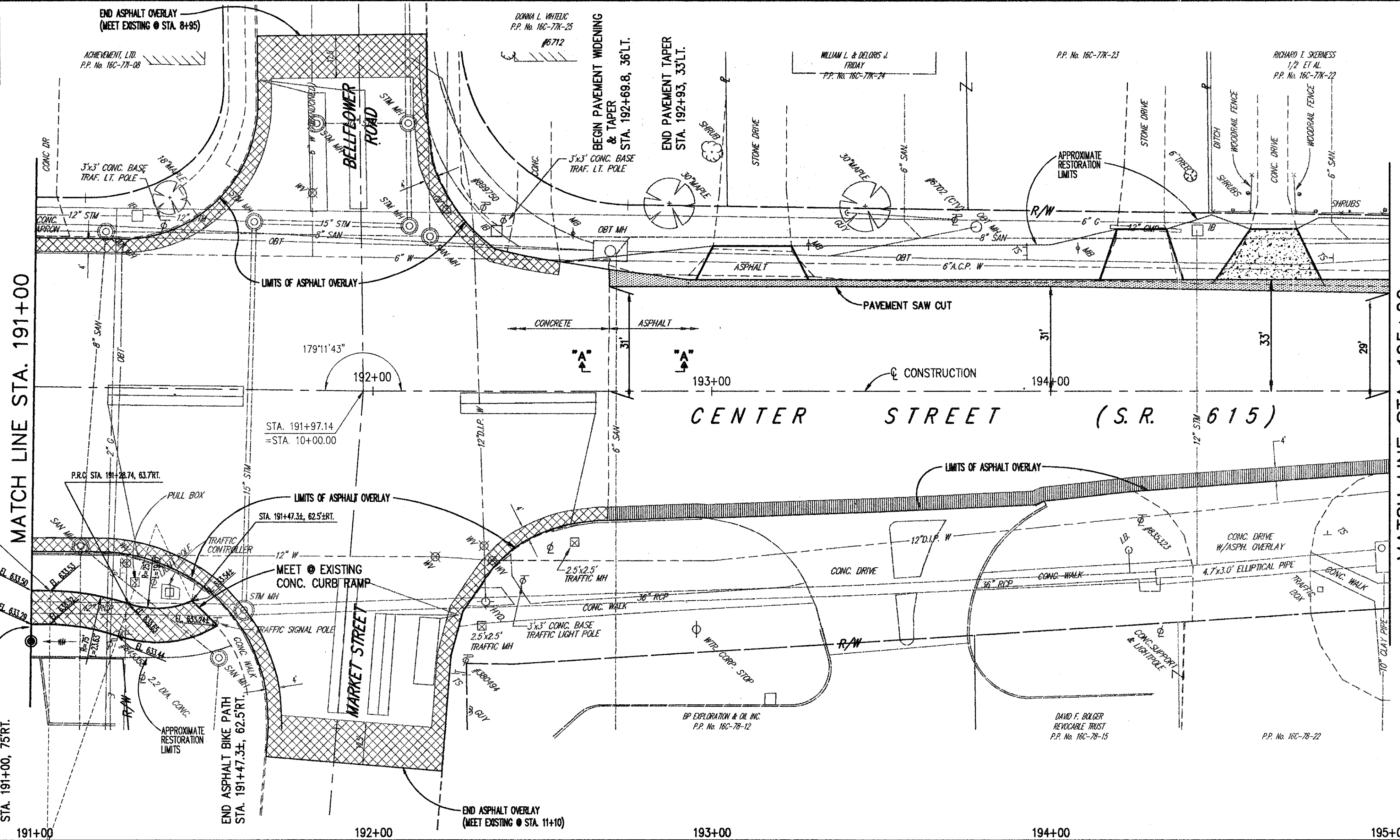
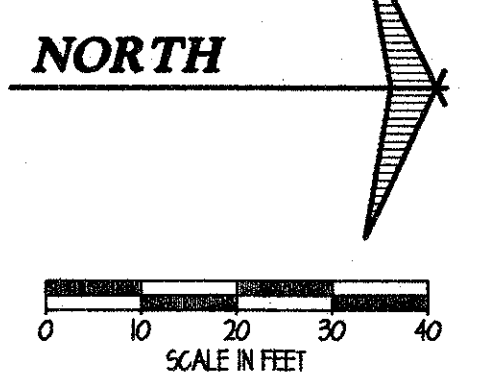
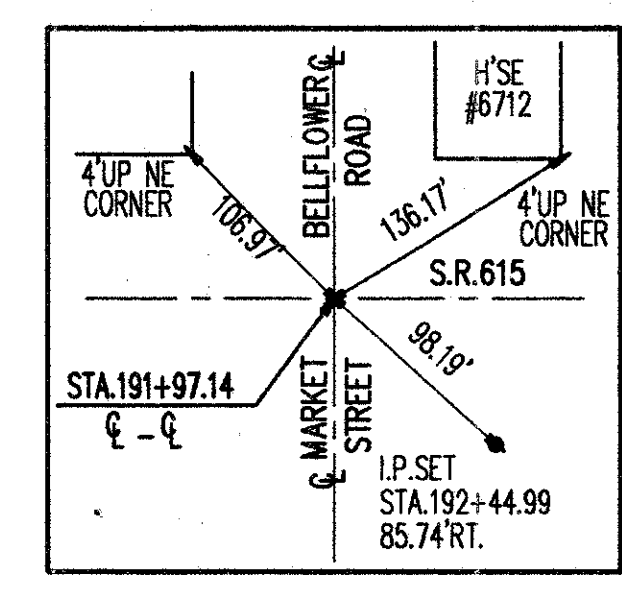


BENCH MARK:
TOP SE CORNER OF FRONT
STEPS HOUSE #6702
STA. 193+41± LT.
ELEV. 634.30



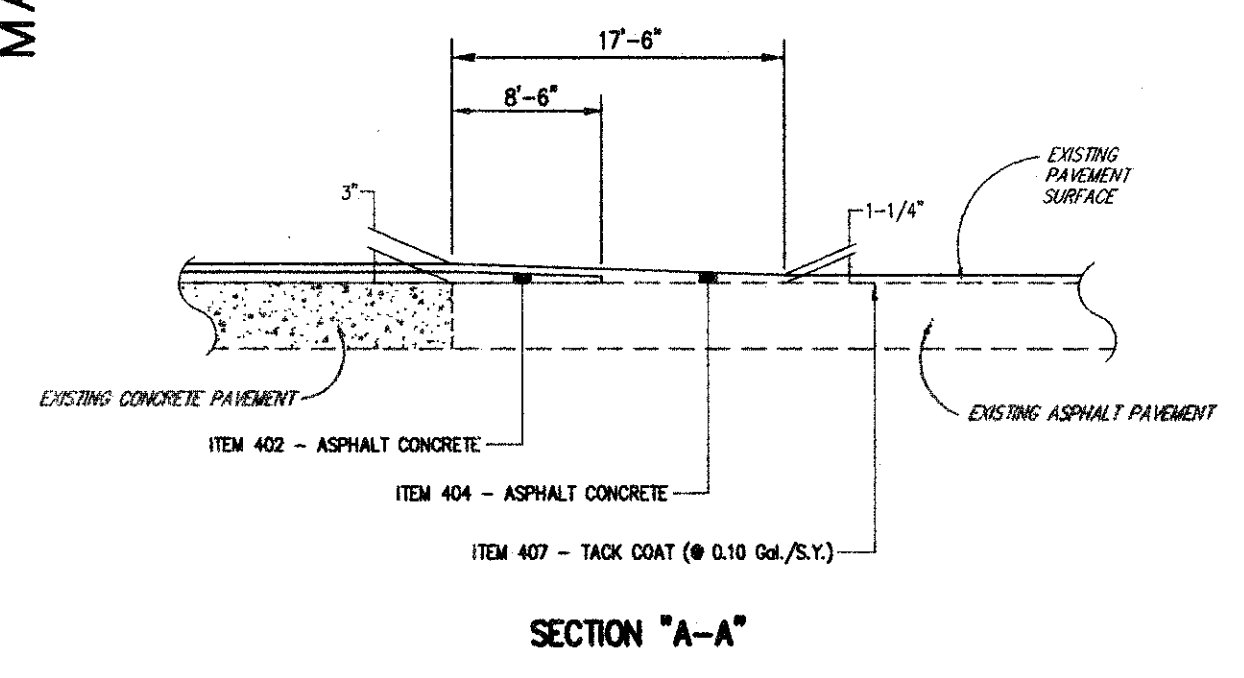
MATCH LINE STA. 191+00

MATCH LINE STA. 195+00



LEGEND

- PROPOSED ASPHALT WIDENING SECTION
- PROPOSED CONCRETE PAVEMENT AND/OR WALK
- AREA OF CONCRETE PAVEMENT PLANNING
- PROPOSED ASPHALT BIKE PATH
- PAVEMENT PLANNING, BITUMINOUS (Thickness Varies, 0" to 1 1/4")



EXISTING PROFILE ELEVATIONS	634.20	633.96	633.80	633.85	633.82	633.69	633.49	633.33	633.27	640	635	630	625	620	615	610
MATCH LINE STA. 191+00	633.50 +00 CHANGE GRADE	633.65 +28.74 CHANGE GRADE	633.54± +47.31 (MEET EXST.)													
PROPOSED PROFILE ALONG FACE OF BIKE PATH	GR = +0.50%	GR = -0.60%														
EXISTING CENTERLINE PROFILE																
UTILITIES	EX. 42" STORM	EX. 8" SAN.	EX. 8" SAN.	EX. 36" STORM SEWER	EX. 36" STORM SEWER	EX. 58" x 36" ELLIP. STORM										
STATIONING	191+00	191+20	191+47.31	191+63	191+79.32	191+94	192+16	192+32	192+48	192+64	192+80	192+96	193+12	193+28	193+44	193+60
STREET CROSINGS	BELFLOWER RD. & MARKET STREET STA. 191+97.14															
STORM SEWERS	EX. SAN. M.H. STA. 191+14.26, 46.70 RT. RIM 633.32 8" W. 626.44 8" E. 626.60 8" N.E. 627.12	EX. STM. M.H. STA. 191+63, 65 RT. RIM 633.02 42" S. 628.22 36" N. 628.52 15" W. 628.72	EX. SAN. M.H. STA. 191+55.49, 79.32 RT. RIM 634.00 8" E. 627.34 8" S.W. 627.31	EX. SAN. M.H. #148 STA. 192+16.9, 45.84 LT. RIM 632.99 8" S. 624.84 6" DROP S. 623.04 8" W. 622.77 8" N. 622.63		EX. STORM INLET CHAMBER STA. 194+90.4, 48.8 RT. RIM 632.99 EX. 58" x 36" ELLIP. INV. S 628.13 EX. 76" x 46" ELLIP. INV. N 628.13 EX. 12" INV. E 628.53										

CENTER STREET (STATE ROUTE 615)
ROADWAY IMPROVEMENTS
CENTER STREET
PLAN & PROFILE
STA. 191+00 TO STA. 195+00

CT Consultants, Inc.
Engineers • Architects • Planners
Willoughby • Mentor • Columbus • North Canton • Youngstown

DATE: _____ DECEMBER, 1988

DRAWN BY: J.J.C.

CHECKED BY: C.C.H.

APPROVED BY: _____

SCALE:
HOR. 1" = 20'
VERT. 1" = 5'

CONTRACT NO.
98387

SHEET NO. 16 OF 103

COPYRIGHT - DATE: 02-12-98 10:38, CT CONSULTANTS INC. H:\1998\9807\9807\98387\98387.DWG PLOT:1-20