

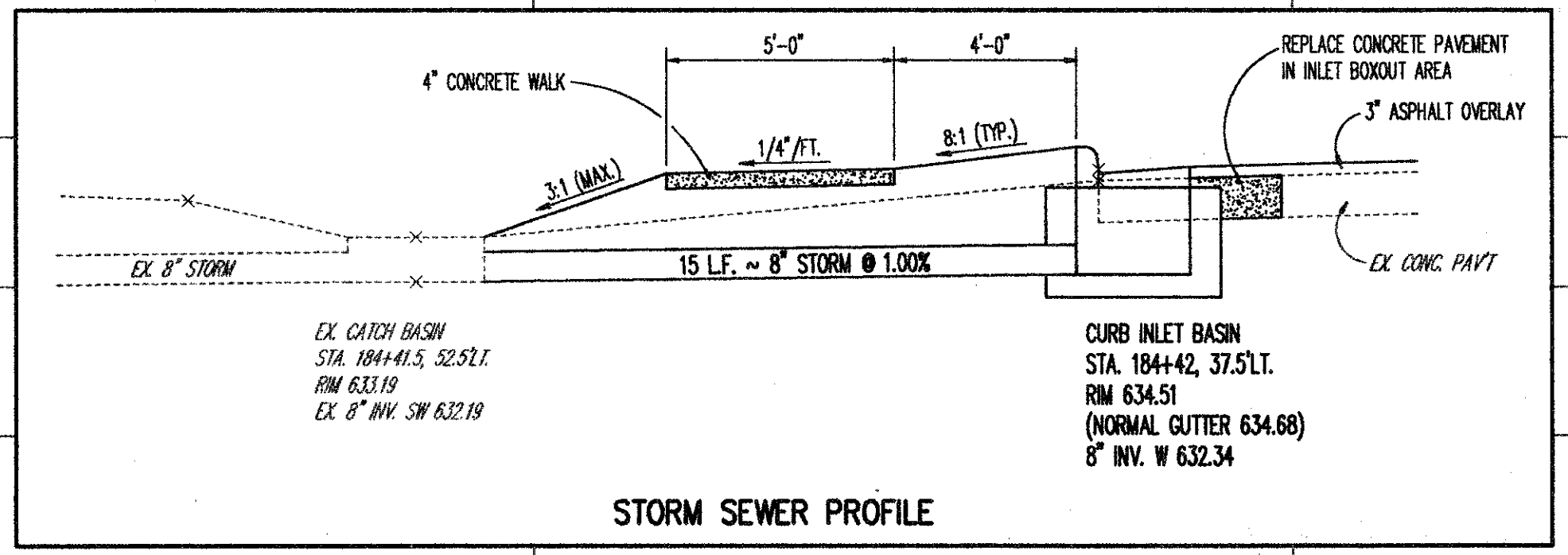
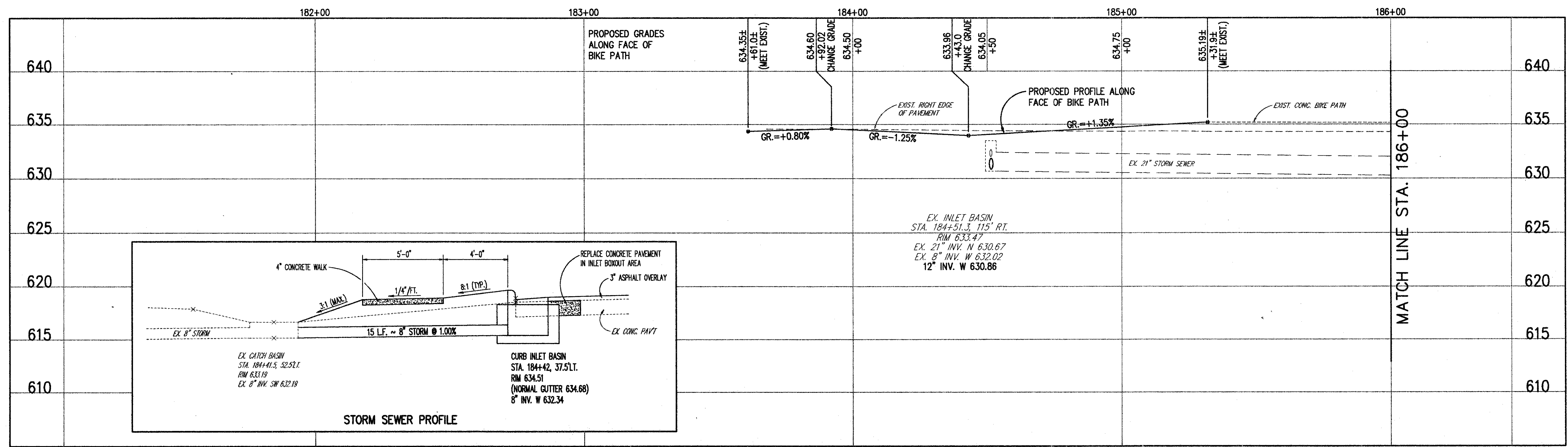
NOTE * NO PAVEMENT PLANNING REQUIRED ALONG EXISTING CURBS UNDER S.R. BRIDGES.

NOTE ** TRANSITION CURB HEIGHT FROM 0' TO 6" IN 6'-0".

NOTE 1 : SAW CUT EXISTING CONCRETE PAVEMENT ALONG PROPOSED CURB LINE. REMOVE EXISTING PAV'T & CURB FROM BEHIND PROPOSED CURB LINE.

LEGEND

	PROPOSED ASPHALT BIKE PATH
	AREA OF ASPHALT PAVEMENT PLANNING
	AREA OF CONCRETE PAVEMENT PLANNING
	AREA OF CONCRETE PAVEMENT AND/OR WALK



**CENTER STREET (STATE ROUTE 615)
ROADWAY IMPROVEMENTS
CENTER STREET
PLAN & PROFILE
STA. 182+00 TO STA. 186+00**

CT Consultants, Inc.
Engineers • Architects • Planners
Middletown • Mentor • Columbus • North Canton • Youngstown

DATE:	DECEMBER, 1998
DRAWN BY:	J.J.C.
CHECKED BY:	C.C.H.
APPROVED BY:	
SCALE:	
HOR.:	1" = 20'
VERT.:	1" = 5'
CONTRACT NO.:	98387
SHEET NO.:	14
OF	103

COPYRIGHT - DATE: 09-12-98 10:42; CT CONSULTANTS INC. H:\1998\98387\SSM\PLAN\STATION.DWG PLOT:11-20