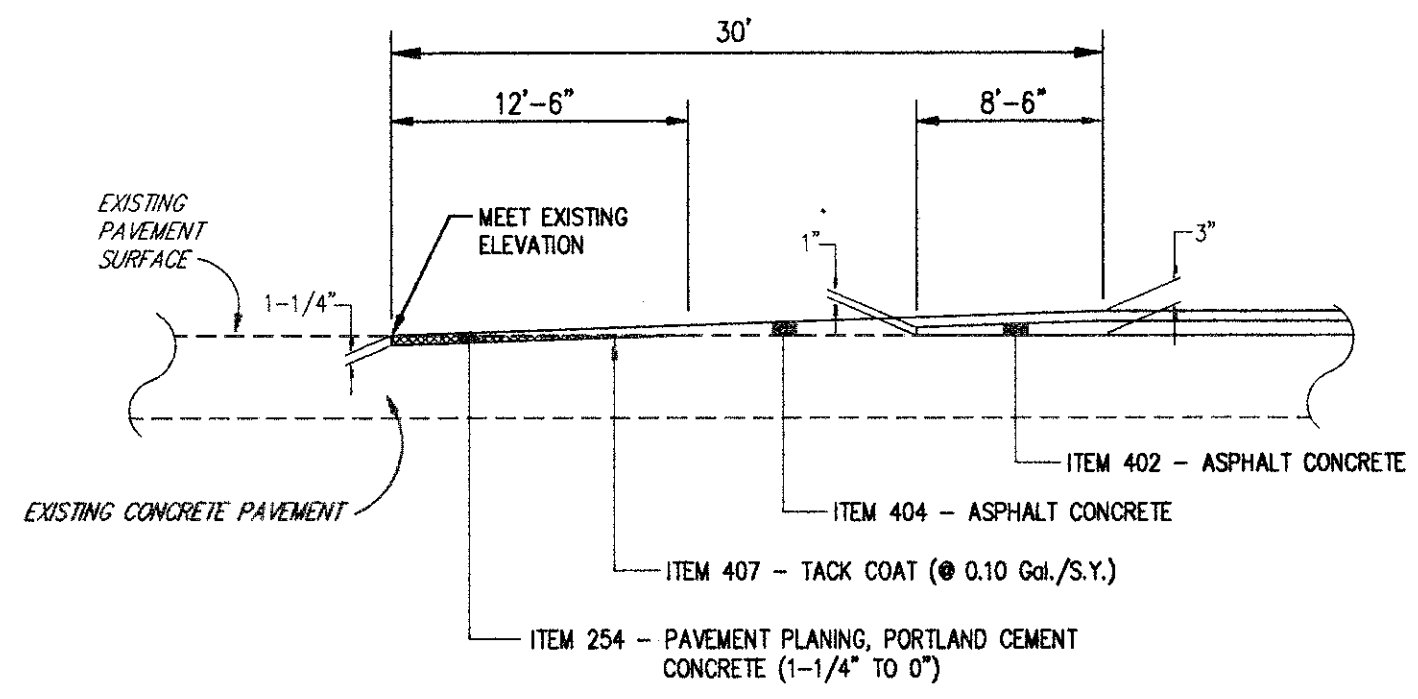
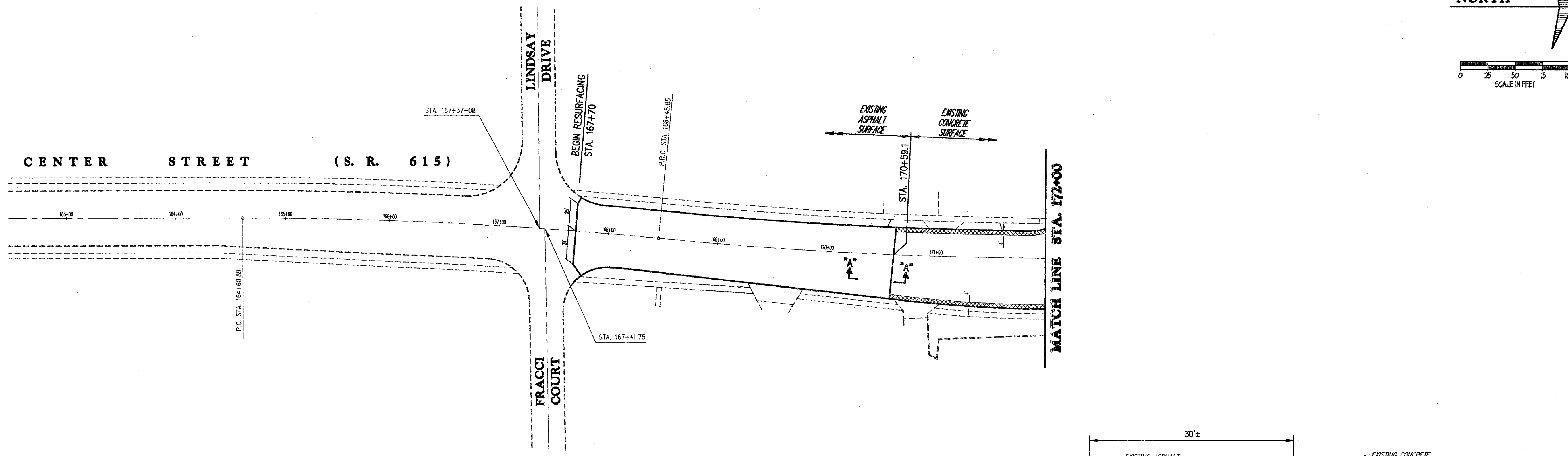


SUBMISSIONS / REVISIONS	

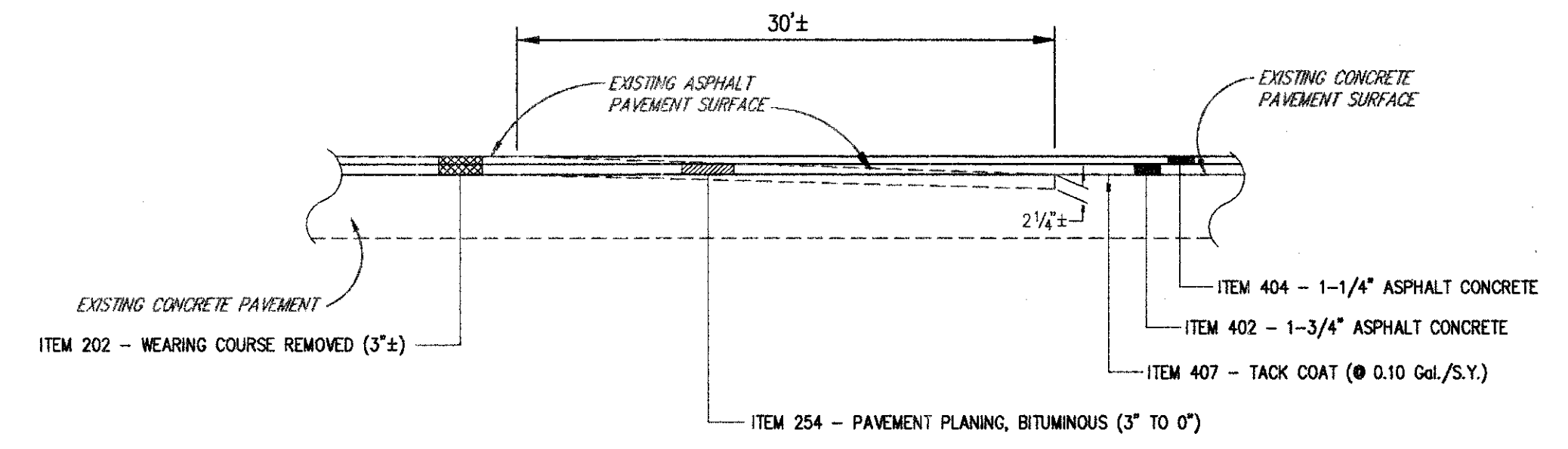
**CENTER STREET (STATE ROUTE 615)**  
**ROADWAY IMPROVEMENTS**  
**CENTER STREET**  
 STA. 161+00 TO STA. 182+00

**CT Consultants, Inc.**  
 Engineers • Architects • Planners  
 Willoughby • Mentor • Columbus • North Canton • Youngstown

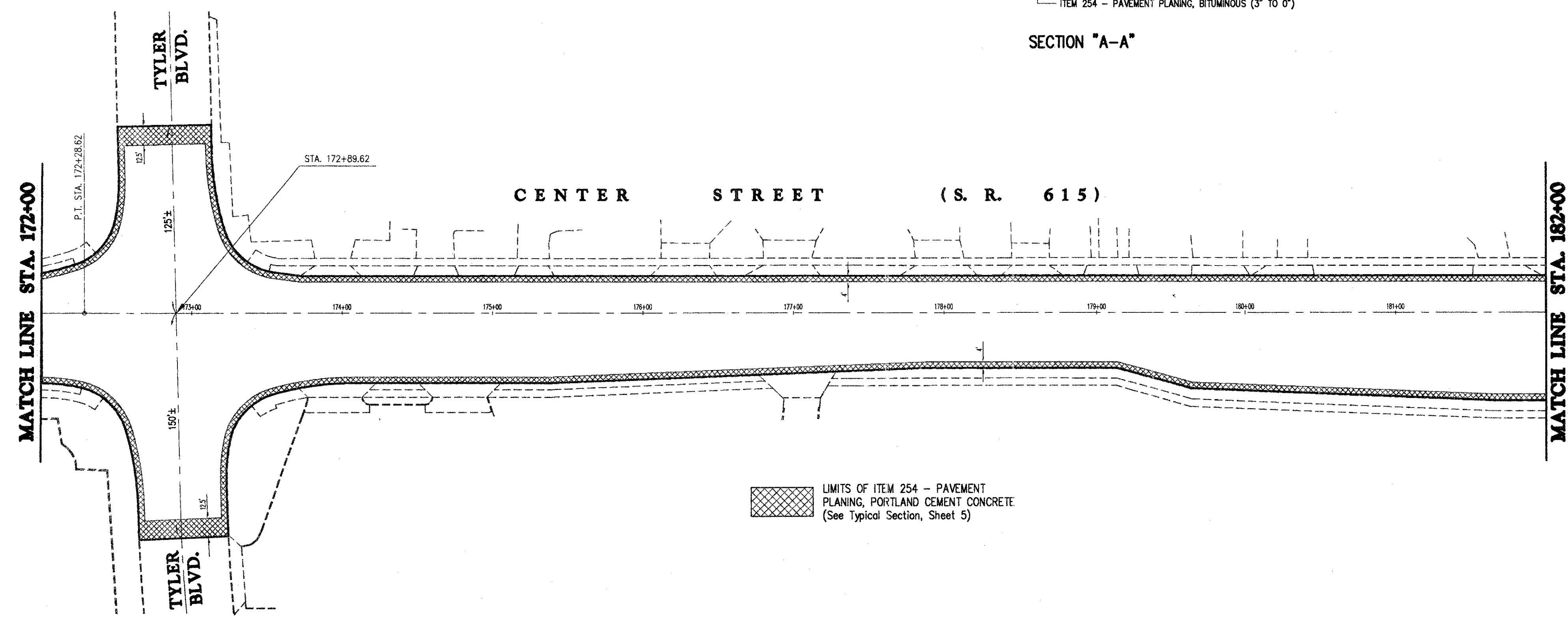
DATE:	FEBRUARY, 1999
DRAWN BY:	J.J.C.
CHECKED BY:	C.C.H.
APPROVED BY:	
SCALE:	
HOR:	1" = 50'
VERT:	
CONTRACT NO.	
<b>98387</b>	
SHEET NO.	OF
<b>13</b>	<b>103</b>



**BUTT JOINT DETAIL  
AT RESURFACING LIMITS**



**SECTION "A-A"**



**LIMITS OF ITEM 254 - PAVEMENT PLANING, PORTLAND CEMENT CONCRETE**  
 (See Typical Section, Sheet 5)

COPYRIGHT - DATE: 07-12-99 11:20, CT CONSULTANTS INC. H: 1998\98387\SDR\9838742.DWG PLOT:1=50