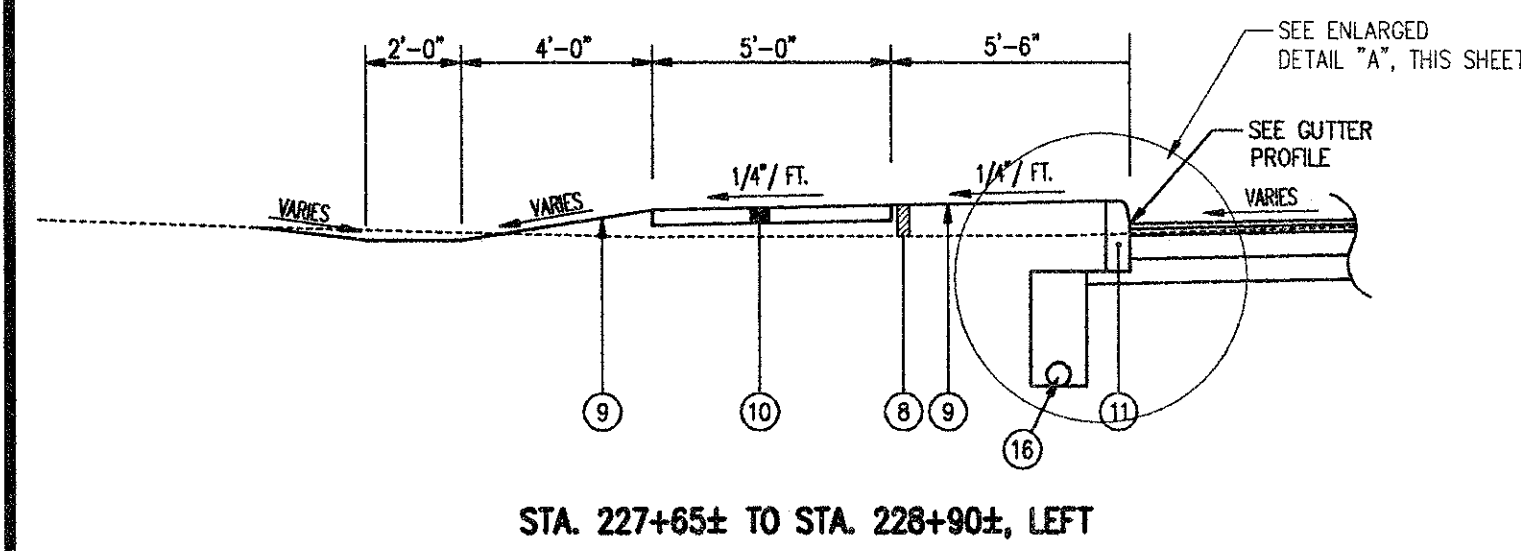
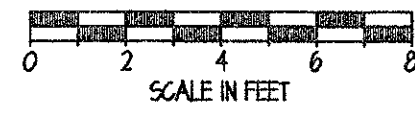
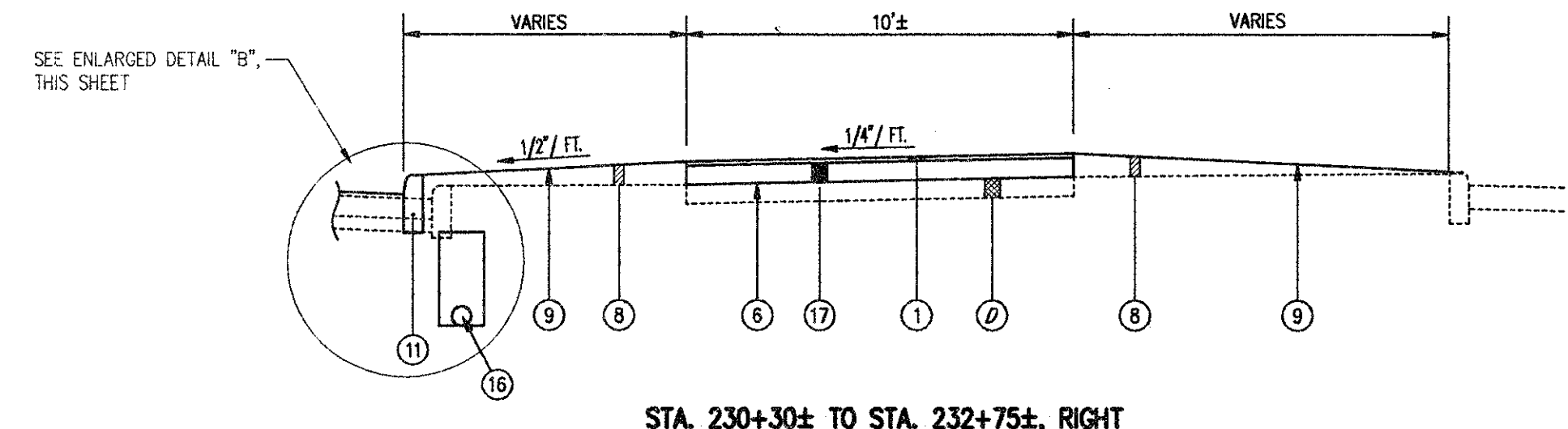


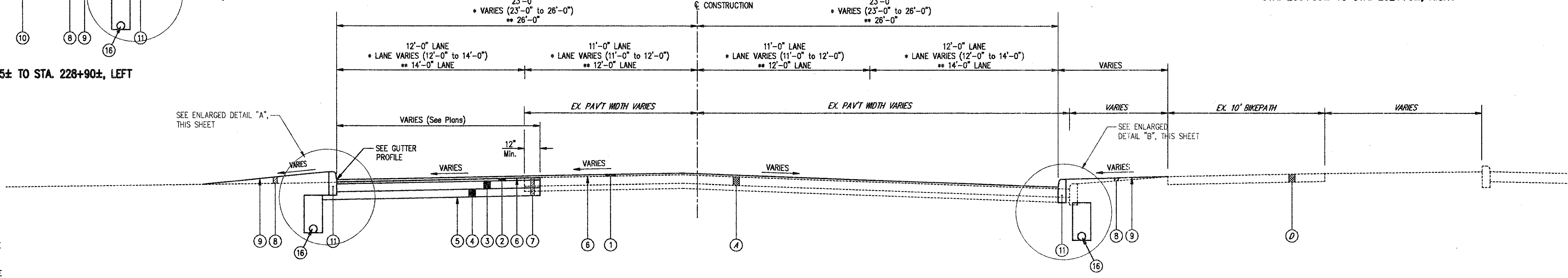
NOTE: TYPICAL SECTIONS ARE INTENDED TO SHOW GENERAL ROADWAY AND PAVEMENT FEATURES ONLY. FOR FURTHER DETAILS SEE PLAN AND PROFILES, PAVEMENT DETAILS AND CROSS-SECTIONS.



STA. 227+65± TO STA. 228+90±, LEFT



STA. 230+30± TO STA. 232+75±, RIGHT

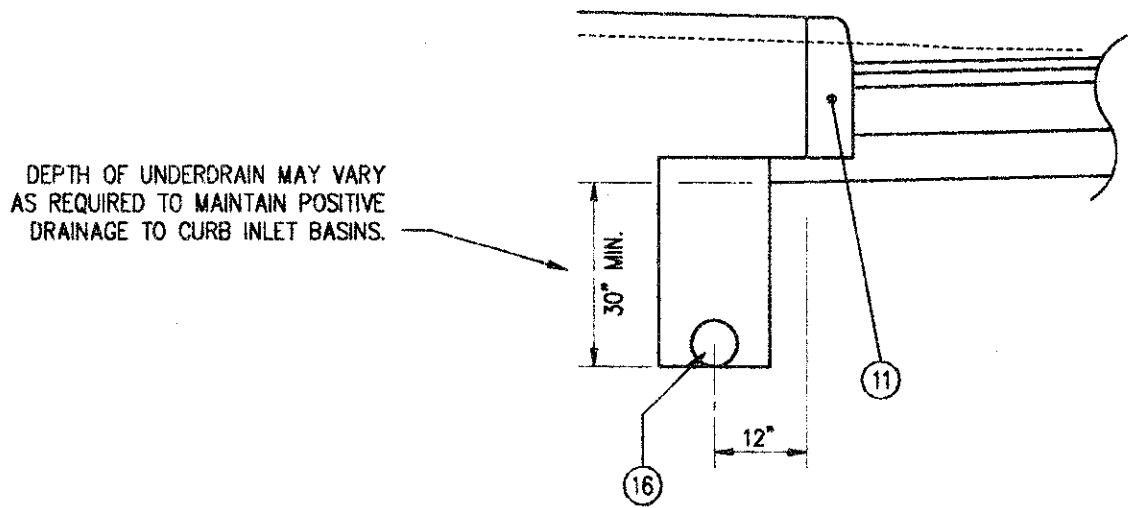


LEGEND

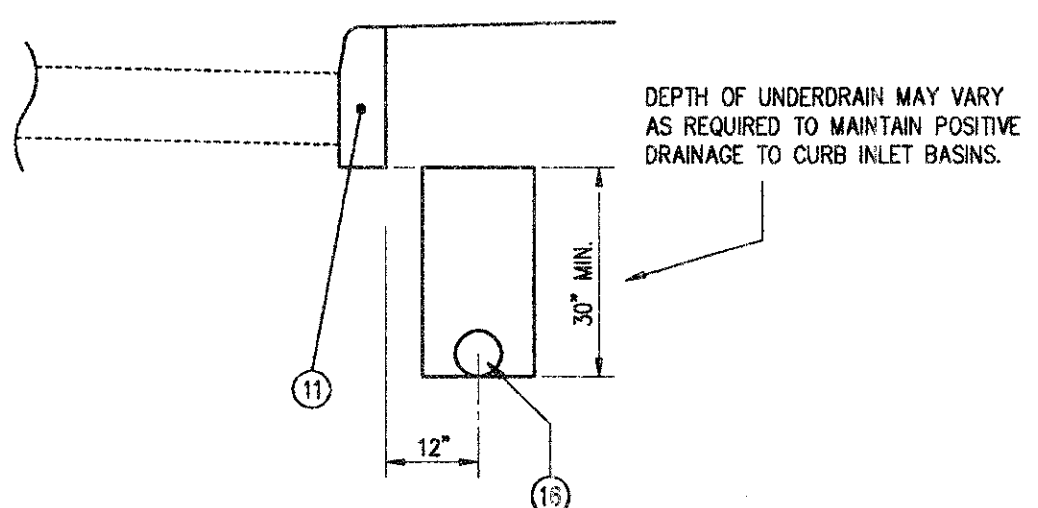
- ① ITEM 404 - 1-1/4" ASPHALT CONCRETE
- ② ITEM 402 - 1-3/4" ASPHALT CONCRETE
- ③ ITEM 301 - 6" BITUMINOUS AGGREGATE BASE
- ④ ITEM 304 - 6" AGGREGATE BASE
- ⑤ ITEM 203 - SUBGRADE COMPACTION
- ⑥ ITEM 407 - TACK COAT (0.10 Gals./S.Y.)
- ⑦ ITEM 203 - EXCAVATION, NOT INCLUDING EMBANKMENT CONSTRUCTION
- ⑧ ITEM 203 - EMBANKMENT
- ⑨ ITEM SPEC - RESTORATION (SEEDING & MULCHING)
- ⑩ ITEM 608 - 4" CONCRETE WALK
- ⑪ ITEM 609 - CONCRETE CURB, TYPE 6
- ⑫ ITEM 202 - PAVEMENT REMOVED
- ⑬ ITEM SPEC - BIKEPATH INSTALLATION, TYPE A
- ⑭ ITEM 305 - 9" CONCRETE BASE (M.S. PER 499.032)
- ⑮ ITEM 609 - CONCRETE CURB, TYPE 2-B
- ⑯ ITEM 605 - 6" UNDERDRAIN
- ⑰ ITEM 301 - BITUMINOUS AGGREGATE BASE (THICKNESS VARIES - 0" TO 6"±)
- A EXISTING ASPHALT PAVEMENT (6"± AVG. THICKNESS)
- B EXISTING 9" ITEM 451 - REINFORCED CONCRETE PAVEMENT
- C EXISTING 6" SUBBASE
- D EXISTING ASPHALT BIKEPATH

CENTER STREET TYPICAL SECTION

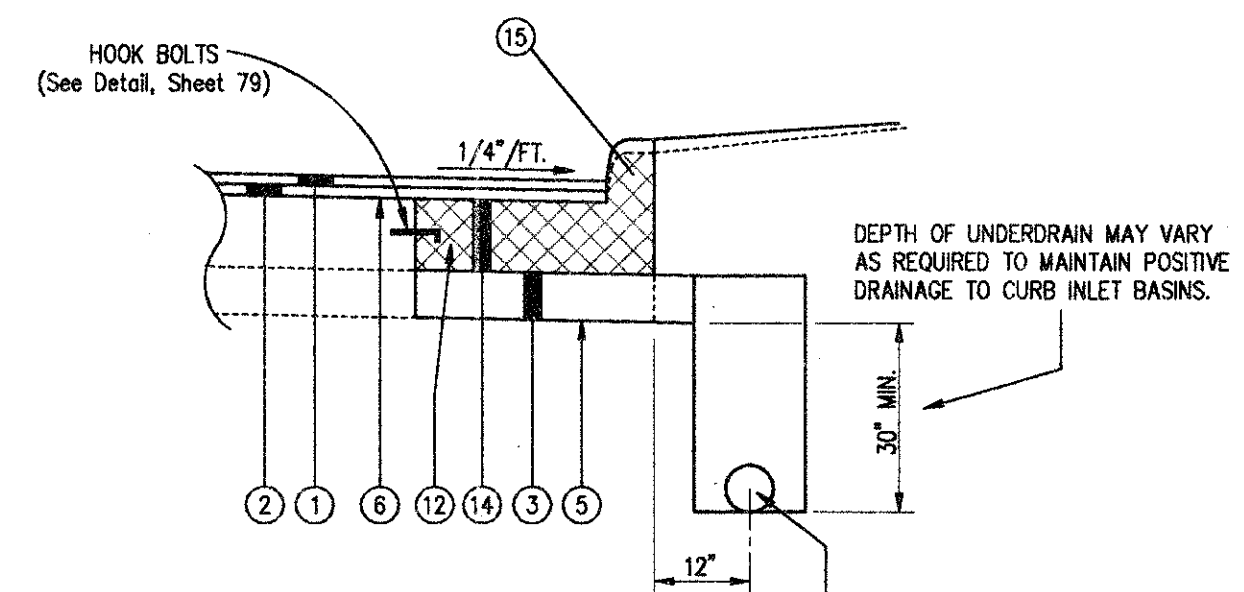
STA. 227+65.0 TO STA. 230+50.0 = 285.0 L.F.
 * STA. 230+50.0 TO STA. 231+50.0 = 100.0 L.F.
 ** STA. 231+50.0 TO STA. 233+78.5 = 228.5 L.F.
 613.5 L.F.



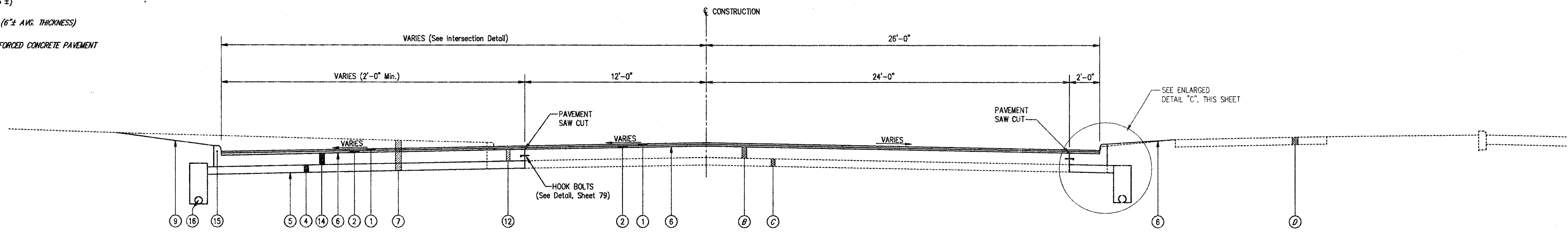
ENLARGED DETAIL "A"



ENLARGED DETAIL "B"



ENLARGED DETAIL "C"



CENTER STREET TYPICAL SECTION

STA. 233+78.5 TO STA. 235+50.0± = 171.5 L.F.

**CENTER STREET (STATE ROUTE 615)
 ROADWAY IMPROVEMENTS
 TYPICAL SECTIONS**

CT Consultants, Inc.
 Engineers • Architects • Planners
 Willoughby • Mentor • Columbus • North Canton • Youngstown

DATE:	MAY, 1998
DRAWN BY:	J.J.C.
CHECKED BY:	C.C.H.
APPROVED BY:	
SCALE:	HOR: 1/4" = 1'-0"
	VERT: 1/4" = 1'-0"
CONTRACT NO.:	98387
SHEET NO.:	8
OF	103

COPYRIGHT - DATE: 05-14-98 13:03, CT CONSULTANTS INC. H:\1998\DRBY\SR615\TYPICAL\PILOT-148